

FEED IT MANY WAYS!

Many dog owners feed Larro dry—just as it comes. Others moisten it with water or milk.

Some mix Larro with raw or cooked meat. ... Or with fish, gravies, broths, soups, stews. ... Or with table scraps or bread and milk.

Larro DOG FOOD

MADE BY GENERAL MILLS

"MILLERS OF FLOUR and FEED FOR OVER 50 YEARS."

FARMINGTON MILLS

Phone 0026

COUNTY DELEGATES TO ATTEND FARM WOMEN'S WEEK

Farm Women's Week, a war casualty for the past four years, will be revived at Michigan State college July 22 to July 25 when 40 women home economics club members from 80 counties come to the East Lansing campus. Mary Woodward, county home demonstration agent, announced today, the Oakland county delegation would be composed of 12 women.

The program will open on Monday evening, July 22 with Miss Rachel Markwell, state home demonstration agent leader, in charge. Dr. Marie Dye, dean of the MSU school of home economics, will speak on "What's Happening at Michigan State College."

Tuesday morning will be devoted to a discussion on the new trends in fabrics and textiles by Miss Hazel Strahan, head of the department of clothing and textile. Dr. Clifford Hardin of the Agricultural Economics department will take on price trends at the afternoon session and Miss Mary Schol of the textiles and clothing department will discuss "Color and Texture in the Home."

Dr. Margaret Ohlson, head of the department of foods and nutrition, will headline the Wednesday morning program. In the afternoon, Miss Eleanor Morrison of the Consolidated Gas company will talk on "If you Live in India." Dr. Charles P. Loomis of the department of sociology and anthropology will lead a panel discussion on "Family Guidance of Young People."

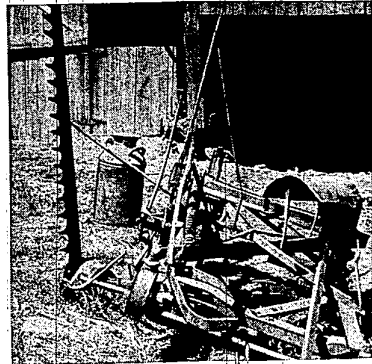
On the final day, Miss Mary Longhead, food preservation specialist of the U.S. Department of Agriculture, Washington, D.C., will tell of "Our Part in Feeding the World," at the morning session. Business sessions will be conducted in the afternoon. A banquet will be held in the evening to close the event.

Delegates include a minimum of two from each county with the additional attendance based on membership. The women will be housed in one of the women's dormitories and meetings will be held in the music auditorium.

The women who will represent the Home Executive Clubs in Oakland County: Mrs. Dora Looney, Pontiac, county chairman; Mrs. LeRoy Barnes, Lake Orion; Mrs. Hugh Meyers, Lake Orion, recreation trustee; Mrs. Arthur Simons, Wilmett; Mrs. J. H. Goodwin, Birmingham; Mrs. Fred Skibowski, Oxford.

The reservations are not all taken up. If anyone is interested, contact Mary Woodward at 1575 West Huron Street, Pontiac.

Farm Scrap Needed by Steel Mills



Farmers can help themselves to get steel—whether it be a new piece of farm machinery, an automobile, a leg of malle, a roll of fencing or other products — by promptly taking their accumulated scrap to the nearest scrap dealer. Scrap of the American Iron and Steel Institute said today.

A grave shortage of scrap threatens to thwart the steel industry's attempt to make up the 19 million tons of steel that it has lost since V-J Day as a result of strikes and work stoppages. The scarcity of scrap is due largely to the fact that industries which usually generate scrap in large quantities have not been operating at all of operating at low levels since V-J Day.

Farms have always been a good source of scrap and during the war when drives were conducted, agricultural areas yielded large tonnages of scrap to help win the conflict.

In view of the current scrap shortage which threatens the future of steel-making facilities, farmers are asked to take their scrap now to town and sell it to scrap dealers. If the scrap is un-

Spraying Increases Potato Yields

Spraying of potatoes is a paying proposition, says Henry C. Moore, research specialist in potato production in Michigan State college. "We have proved in experimental and test plots that spraying with DDT improves the quality of the potatoes and steps up production from 60 to 100 bushels per acre," he stated.

The specialist says the time to start is when the plants are four to five inches high. Spraying every 7 to 10 days is recommended until more frequently if the season is wet. DDT will control the flea beetle very well. The potato leaf hopper, which causes the edge and tip of the leaf to turn brown and curl, also is effectively exterminated with the new killer. This hopper causes severe damage after haying time as it leaves the hay fields and migrates to the potato fields after hay is cut.

Contrary to the opinion of some, DDT can be used effectively with Bordeaux mixture or a fixed copper solution, Moore says. The Bordeaux mixture or fixed copper solution will control blight. DDT should be added last and the solution sprayed as heavy as 125 gallons to the acre. The tractor operator should drive slowly to get adequate coverage.

Too often, Moore has observed, farmers quit spraying too quickly. When plants are large, spraying is difficult, but 60 per cent of the potato field is made in the last few weeks of the season. For this reason spraying should continue until frost or harvest. The potato specialist also suggests farmers contact county agricultural agents for proper formulas for spraying potato fields.

While the population of the United States has increased only 30 per cent in the past 25 years, the number of persons owning life insurance has increased 90 per cent and the total life insurance owned has increased nearly 800 per cent.

PAINTING-Paperhanging AND DECORATING INTERIOR and EXTERIOR Fully Insured FREE ESTIMATES CALL FREDERICK Livonia 2547

Tractors Cause Many Fatalities On Farms

Farm safety week, July 21 to 27, should be the starting point to eliminate at least one hazard a day until Michigan farms are as safe as they can be made. And Fred J. Roth, extension specialist in farm safety at Michigan State college, thinks a good place to start is with the tractor.

More agricultural accidents happen around the tractor than with any other implement or at any other place on the farm — except the house. Good judgment will prevent tractor accidents which usually fall in three main classes: overturning, falls and power take-off entanglement.

Although about one in 75 tractor accidents is fatal, the accidents usually cause serious injuries and loss of time when the farmer is in his busy season, Roth reveals.

The American people own what appears to be a large amount of life insurance — \$163,000,000,000. When divided by 71,000,000, the number who own life insurance, this figure breaks down, however, to an average of only \$2,300 per policyholder.

FLEET WING GASOLINE

Delivered to Farmers at Truck Prices

Prompt Deliveries for Any Amount

EBERLE and VAN EVERY SERVICE

Indian Oil Co. DISTRIBUTORS — Fleet-Wing Products
31233 GRAND RIVER at ORCHARD LAKE

Farmers Attention!

GROUND LIMESTONE FERTILIZER

GET YOUR ORDER IN NOW ...

For Present or Future Delivery at Present Low Rates

E. S. MATHER

PHONE FARMINGTON 1599

\$1 RIDES YOUR LAWN OF UGLY WEEDS!

WEED-NO-MORE

Magic Weed Killer

Kills Ugly Weeds but Won't Harm Common Lawn Grasses!

NO MORE back-breaking weed digging! Now you can enjoy a beautiful, weed-free lawn by just mixing 2 tablespoons of WEED-NO-MORE to a gallon of water and spraying it on.

Weeds will soon begin to shrivel and die. WEED-NO-MORE kills dandelion, plantain and other ugly weeds—yet won't injure soil.

Get it today! Just spray on... WEED-NO-MORE.

Everett Implement Co.
Grand River at Orchard Lake Rd. Phone 1515

"Help Every Laying Hen Do Her Best"

Says Kitty Kasco

Keep Production in high gear — with —

Kasco EGG PRODUCER

Contains ... MINERALS VITAMINS CARBO-HYDRATES FATS

"Lime Crest"

CALCITE CRYSTALS

helped Set a New World Record: 376 EGGS IN 377 DAYS

Ask Us About Lime Crest TODAY!

FARM SERVICE SUPPLIES

High-Performance Poultry and Live Stock Feeds

PHONE 0639

COR. ORCHARD LAKE and 12 MILE ROADS FARMINGTON, MICHIGAN

RE-PAINT --- RE-DECORATE NOW!

OUTSIDE WHITE PAINT

Just **DIP IN WATER and UP IT GOES!**

TRIMZ Ready-Pasted WALLPAPER

NO PASTE! NO TOOLS! Anyone Can Hang It!

CORUSCING PATTERNS FOR EVERY ROOM — REDECORATE NOW AT LOW COST

Inside ... Flat White also Selection of Colors

Weather-Resisting **BARN PAINT**

Store Hours — 9 a.m. to 8 p.m.

C. & H. Paint Store

33302 7 Mile at S. Farmington Road. Phone Farmington 1284

How to get the most out of rural telephone lines

We're building more rural lines, as fast as we can, in order to reduce the number of telephones on overcrowded lines. But it's a big job that can't be done overnight.

In the meantime, rural line neighbors can get better service by:

- 1 Keeping all calls reasonably short and allowing an interval between calls.
- 2 Avoiding unnecessary interruptions when the line is in use.
- 3 Releasing the line as soon as possible when someone else is waiting to use it.
- 4 Hanging up the receiver carefully to make sure the line is kept free.

MICHIGAN BELL TELEPHONE COMPANY

Watch your profits go UP!

... with a portable **ELECTRIC GRAIN ELEVATOR**

Portable electric-powered grain elevators are on the market now! They will save any farmer time ... money ... and muscle. They will cut out back-breaking shoveling for him and his hired hands. They will give him instead an efficient, tireless "wired hand" who will toss grain into granary or corn crib quickly and economically.

Talk to your Edison Farm Service Advisor about the grain elevator best suited to your particular job. Ask him to arrange for you to see one of these rugged profit-builders in actual operation on a farm. There you can talk dollars-and-cents facts to its owner. You'll find that one of these elevators can be practically custom-built to your individual needs. You'll also discover that there are many ways an electric elevator can serve you. Your Edison Farm Service Advisor will be glad to give you sound, conservative, impartial advice—see him today.



One of the small grain elevators can store five hundred bushels of ear corn an hour—for a penny's worth of electricity!

More Power to Michigan's Farmers ... **ELECTRICALLY!**

The DETROIT EDISON Co.