

# TAXI SERVICE

Phone Farmington 1300

TIME CALLS TAKEN 48 HRS. IN ADVANCE

Courteous — Bonded  
War II Veteran Drivers

## FARMINGTON LaSALLE CAB Co.

33310 Grand River Ave.

### SALSBUARY SAL



When Disinfecting  
Is Your Chore,  
Use PAR-O-SAN—  
It Does Lots More!



Getting Ready  
for Your Checks?  
Let Us Help You

### SALSBUARY SAL



Chick to Pullet  
Like a Bullet!  
What's the  
Reason?  
Just That  
Plein—  
REN-O-SAL!

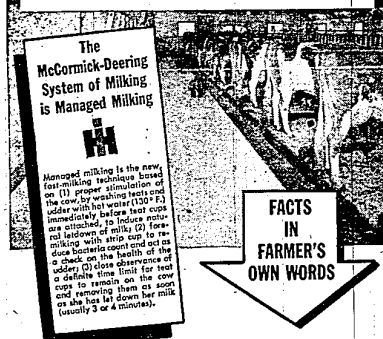


REN-O-SAL  
Also Controls  
Cecal Cocci!

We Are Always in the Market for Grain  
**FARMINGTON MILLS**  
"Mills of Flour and Feed for Over 60 Years."  
Phone 0026

**PRICE REDUCED \$51.00**

"Wonderful Results" with **MANAGED MILKING**  
says Experienced Dairymen



**FACTS IN FARMER'S OWN WORDS**

Managed milking is the new fast-milking technique known as (1) proper stimulation of the cow by weighing her ears, (2) adding warm water (120° F.) immediately before teat cups are attached, to induce normal letdown of milk; (3) have milkers with three teats to remove bacteria count and get a check on the health of the udder; (4) close observation of udder; (5) limit for teat a definite time on the cow once it is in milk; (6) removing them as soon as the bell had rung for milk (usually 3 or 4 minutes).



The quicker the freezing, the better the flavor! So—Esco has a separate freezing compartment with an air-blown fan. Foods freeze 3 times faster than in still air!

You get many other advantages, too. Large storage compartments. Lift-type lids, on top, to conserve refrigeration. Durable construction. Efficient, economical operation. Count on Esco! This company

**Everett Implement Co.**  
Grand River at Orchard Lake Road Phone 1515

# FARM FEATURES

## Farmers Attend Disease Meeting

Karl D. Bailey, county agricultural agent, reports that the sales during the past three weeks has encouraged the development of several serious diseases affecting tree fruits. Brown rot, a fungus disease affecting the fruits of sour and sweet cherries, peaches and in some cases, apples, has made severe inroads on unsprayed trees. Trees which have been sprayed several times have shown considerably less injury.

Apple scab, also a serious fungus disease affecting the foliage and stems of young fruits of the apples has resulted in considerable infection in many orchards. Codling moths have emerged and are now laying eggs.

Bailey recommended the following sprays to fruit growers:

**APPLES:** Use 4 to 6 lbs. of wettable sulphur, plus 3 lbs. lead arsenate, plus 1 lb. lime in 100 gallons of water.

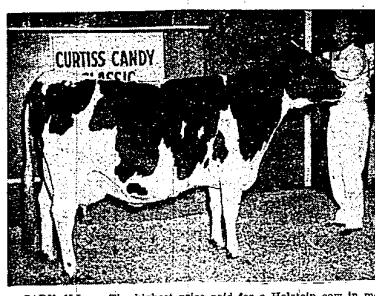
**SOUR AND SWEET CHERRIES:** Use proprietary copper according to package recommendations plus 4 lbs. of lime, plus 2 lbs. of lead arsenate in 100 gallons of water. This spray controls brown rot, curculio and slugs.

**PEARS:** Use 2-8-100 Bordeaux plus 2 lbs. lead arsenate for codling moth, curculio and scab.

**GRAPES:** Spray just as the blossom buds are opening, using 3-8-100 Bordeaux plus 3 lbs. of lead arsenate or calcium arsenate plus 3 quarts summer oil. This controls rosy oak rot, berry moth and downy mildew.

**PEACHES:** Zinc sulphate 4 lbs., lime 4 lbs., lead arsenate 2 lbs., wettable sulphur 4 lbs., DDT 2 lbs. Add 100 gallons of water. This spray controls curculio, scab brown rot, rosy chafer, leaf hopper, tarnished plant bug on peaches.

## HIGHEST PRICED HOLSTEIN IN 20 YEARS



**CURTIS CANDY**  
—**ASSIC**

**CARY, ILL.** — The highest price paid for a Holstein cow in more than 20 years was established at the 2nd annual Curtis Candy Classic at the company farms near here. Dunloggin Mistress La Princess, an 8-year-old Holstein and the first animal placed on the auction block, was sold for \$25,500 to Chester Williams, Waukegan, Wis. Fifty head of fine grade Holstein cattle were sold at the Classic for a total of \$98,350, or an average price of \$1,987, according to Otto Schneringer, president of the company. More than 2,000 Holstein breeders and fanciers attended.

## Wet Spell Caused Fruit Diseases

Farmers in Oakland County heard Dr. C. F. Clark, State Veterinarian, discuss a proposed plan for a county-wide Area Bangs Control Program, Wednesday evening, June 18, at the Clarkston Town Hall.

About 60 farmers attending the meeting listened with interest as Dr. Clark discussed a proposed plan for herd testing and calfhood vaccination as a means for control of Bangs. Dr. Clark pointed out that from up to 25 per cent of the herds in areas already in this plan have been found to be infected. At present, only one county in the state has not requested the program.

Under the proposed plan for Oakland County, a mobile laboratory would be centrally located and testing would be carried on by local state and federal veterinarians at state expense. Dr. Clark did not indicate when the program might be started in the county.

## MSC Dairyman Urges Utensil Cleanliness

Improperly cleaned utensils are listed by D. L. Murray, Michigan State college extension dairyman, as the cause of a large amount of bacteria getting in milk.

A good near-neutral dairy cleaner should be used, and all surfaces of the equipment should be cleaned. The equipment should be stored in a clean place during the day. Before use, a chlorine rinse or other means of sterilization should be used.

Residue left by the weed killer 2,4-D in spraying equipment will kill desirable plants unless the equipment is thoroughly cleaned.

Farm account books are a necessity in studying the status of the farm business, MSC farm management specialists say.

## COOLING STRESSED FOR QUALITY MILK IN HOT WEATHER

Milk losses brought about by condemnation of warm milk will be extremely high when hot weather arrives unless producers start immediately cooling all milk at the farm and protecting it in transportation.

Plant checks made by the Department of Agriculture inspectors last week found that considerable milk was arriving at the plants at 75 degrees or above. The state law and all city ordinances require that milk be cooled to 50 degrees, and all plants have been warned not to receive farm milk.

According to F. M. Skiver, Chief of the Bureau of Dairying, State Department of Agriculture, inspectors will continue to check temperatures at the plants as proper cooling of milk and cream is one of the most important factors in quality work. All milk producers should immediately check their cooling tanks and make sure that sufficient fresh water is supplied to the tanks while milk is cooling.

A pen barn, rather than the usual dairy arrangement, means fewer cows and requires less equipment and labor in handling manure, according to farm labor specialists at Michigan State college.

## Evergreen Seedlings Reach Pre-War Demand

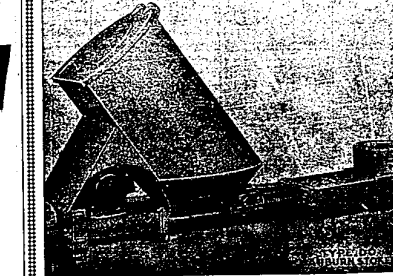
Demand for evergreen seedlings has been heavier this spring than at any time since 1940. Many millions of trees are being planted in Michigan this year and only the limited number of seedlings available prevented larger acreage.

P. W. Robbins, Michigan State college forestry professor in charge of the nursery, says the college alone distributed nearly three-million seedlings. The Michigan Conservation Commission will distribute approximately two million trees.

R. C. Hull, secretary of the state soil conservation committee, believes cooperators in Michigan's 36 soil conservation districts have planted nearly five million trees this spring.

Although many seedlings were available in the first years of the war, a shortage of labor to harvest, ship and plant them prevented heavy plantings. Demand started increasing last year, but the supply of seedlings was limited. This was due to labor shortages which had prevented seeding during the war years.

## Safe Economical Heat . . . for your home



**AUBURN DO STOKERS**  
You can now have safe, automatic heat at a saving. Enjoy a comfortable home this winter by having an AUBURN STOKER installed today.

**HOT AIR STEAM HOT WATER**  
Completely Installed \$299.50  
— Easy Payment Plan for Your Convenience —  
VISIT OUR NEW SHOW ROOM

**CLARENCE E. BARBER**  
PLUMBING AND HEATING CONTRACTOR  
32725 Grand River Phone 0868

## VACCINATION TIME IS APPROACHING FOR FOWL POX

The time for fowl pox vaccination is near, says Dr. C. E. Hardin, extension poultry pathologist at Michigan State college.

If fowl pox has not appeared in your area, it is definitely not advisable to vaccinate. It is possible that the vaccination will introduce the disease if it is not already prevalent. In areas where the disease is discovered, vaccination of young birds from six to twelve weeks of age, is advised.

There are two kinds of pox vaccine. For outbreaks of pox in flocks of adult birds, milder vaccine should be used. This is called pigeon pox vaccine.

For vaccination of young birds and turkeys, the regular fowl pox vaccine should be used.

For turkeys should be vaccinated at the same age as chickens. Turkeys will not hold the immunity for more than 5 to 6 months and birds held over as breeders should be vaccinated about four to five months after the first vaccination.

Both types of vaccine are made of living germs and extreme caution must be used in handling them. Outbreaks of the disease are possible if the vaccines are improperly handled. Instructions for use should be obtained from a veterinarian or other person qualified to do this kind of work.

Advertisements in the Enterprise

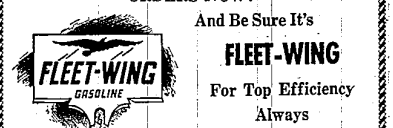
## CAP SMITH

Auctioneer and Appraiser  
SECURE YOUR DATES FOR SPRING AUCTIONS  
All Farm Sales Conducted On A 3 Per Cent Basis  
Res. New Hudson  
Phone South Lyon 4365

## State Farm Insurance Co's.

**AUTOMOBILE — LIFE — FIRE**  
RESIDENCE — PERSONAL & FARM LIABILITY  
Michigan Farm Bureau, State Agent  
**Maurice Brown**  
LOCAL AGENT  
33636 Grand River Avenue

## PLACE YOUR GASOLINE DELIVERY ORDERS NOW!

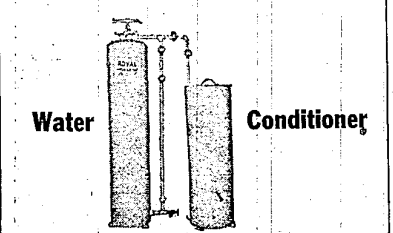


And Be Sure It's **FLEET-WING**  
For Top Efficiency Always

We will deliver any quantity to farmers, golf courses, bulk users of gasoline  
See Us Today for Contract Estimates  
or  
Phone 9012

**EBERLE and VAN EVERY SERVICE**  
Red Indian Oil Co. — DISTRIBUTORS — Fleet-Wing Products  
31233 GRAND RIVER at ORCHARD LAKE

## You Can't Afford To Be Without A ROYAL . . .



Save money - save time and trouble by having soft water all the time. Why waste soap - expensive softener chemicals - and fuel when you can have this home luxury within reach of all?

**SOLD ON CONVENIENT MONTHLY PAYMENTS**

We Have a Good Supply of Berry Boxes  
**WATER SOFTENER SALT . . . . . \$1.20 cwt.**

## FARM SERVICE SUPPLIES

High-Performance Poultry and Livestock Feeds  
PHONE 0639  
COR. ORCHARD LAKE and 12 MILE ROADS  
FARMINGTON, MICHIGAN

## YOU SAVE THREE WAYS WITH A PORTABLE Electric GRAIN ELEVATOR

- 1. YOU SAVE TIME**  
You can handle 20 or more bushels of grain per minute. An electric elevator does the work of six men.
- 2. YOU SAVE LABOR**  
Save your own muscles and those of your hired hands. Relax while it loads your grain.
- 3. YOU SAVE MONEY**  
In hours gained and wages saved. Use it for ear corn, baled hay, every type of grain.

Plenty of top-quality portable electric elevators are on the market. Their simple, durable construction keeps repairs at a minimum. Operating costs are mighty modest with a 1/2-h.p. motor. Talk to your Edison Farm Service Advisor about the type best suited to your needs. His advice is accurate and impartial—and he'll be glad to arrange a demonstration for you.

**The DETROIT EDISON Co.**

Another Example of Electricity Doing the Job Better Than Any Other Method