

State Farm Insurance Co's.

AUTOMOBILE—LIFE—FIRE
RESIDENCE - PERSONAL & FARM LIABILITY

Michigan Farm Bureau, State Agent

Maurice Brown
LOCAL AGENT

33636 Grand River Avenue

FOR TAXI SERVICE

PHONE 2270

24 HOUR SERVICE

Calls Taken in Advance

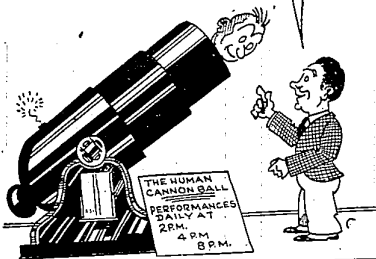


John Q. Young

FARMINGTON CITY CAB COMPANY

S. FARMINGTON RD. and GRAND RIVER
Across from the Farmington State Bank

YOU HAVE NOTHING TO WORRY ABOUT!!
I FOUND WHERE TO BUY A SOFT MATTRESS
BY CONSULTING THE YELLOW PAGES
OF THE TELEPHONE DIRECTORY



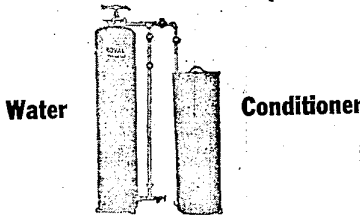
IT'S A PLEASURE

When Your Car Runs Smoothly
Make sure it's in A-1 condition for that Labor Day holiday trip.



Motor Tune-Up Expert Brake Service
Guaranteed Motor And Radiator Flushing
24 HOUR AAA TOWING SERVICE
For Night Calls Phone 1359
Catlett Hi-Speed Service
Grand River at Grace Phone 9022

You Can't Afford To Be Without A ROYAL . . .



Water Conditioner

Save money - save time and trouble by having soft water all the time. Why waste soap - expensive softener chemicals - and fuel when you can have this home luxury within reach of all?

SOLD ON CONVENIENT MONTHLY PAYMENTS

WATER SOFTENER SALT \$1.20 cwt.

FARM SERVICE SUPPLIES

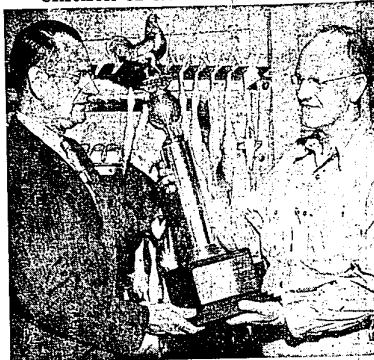
High-Performance Poultry and Livestock Feeds

PHONE 0669

COR. ORCHARD LAKE and 12 MILE ROADS
FARMINGTON, MICHIGAN

FARM FEATURES

Chicken-of-Tomorrow Winner



THE BARRIED ROCKS developed by Lloyd Tice, Barrington hatcheryman, won the second year in Michigan's Chicken-of-Tomorrow contest to develop a meatier, more economical bird for the dinner table. L. P. Voigt (left), A & P Food Stores, Grand Rapids, presents the winner trophy to J. M. Moore, Michigan State College poultry specialist and state contest chairman, for delivery to Mr. Tice. The Barrion Rock becomes a strong contender for national honors next year when the food chain sponsor of the competition, will award \$5,000 in cash to the breeder of the best meat-type chicken.

County 4-H Fair Now Under Way

Labor saving gadgets of interest to farmers will be a part of the Dairy Exhibit at the Oakland County 4-H Fair August 20-23. Mr. Albert Pfisterling, Emergency Farm Labor Assistant of Bay County will exhibit this home made equipment that can be used to make more and aching backs fewer. "This exhibit is brought to the fair under the auspices of Michigan State College.

The exhibits consist of the following: Incline grain elevator, vertical grain elevator, transport elevator and power lift, rat trap (catch 'em alive), chick brooder, pig brooder, power saw, gutter cleaner, grain bag holder, drill press, portable motor.

A special feature of the 1947 Agricultural Fair will be a Junior Horse Show. Exhibitors are limited to those 18 years of age or under and it is expected that over 50 entries will be made. Sixteen classes of competition are offered including those for beginners not over 10 years of age. A 4-H horsemanship, 13 years and under, horsemanship, 14 years and under, stock horse class, potato race, gaited race, horsemanship jumping and green hunters. This class is open to both 4-H and open class entries.

Michigan turkey farms decreased from more than 13,000 in 1929 to 3,500 in 1944. The farms in 1929 averaged 18 turkeys each, but in 1944 had an average of 130 on each farm, recent livestock census figures indicate.

Grazing livestock is probably the worst abuse to which Michigan farm woodlots are subjected, MSC foresters say. The animals do damage by breaking off branches, peeling the bark, trampling small trees and packing the ground.

FORESEE INCREASE IN COUNTY OF NEW FARM HOMES

Farm families in Oakland County will spend more than \$2,468,000 on new housing in the next three to five years, according to a forecast released by the Title Council of America.

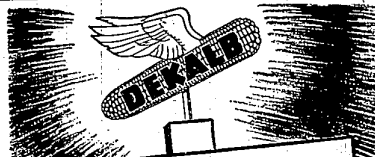
"As a result of high incomes during the last few years, farmers in every part of the nation are prepared to invest record amounts in new home construction and in general farm improvements," said F. B. Ortman, chairman of the Council's residential construction committee.

Pointing out that the comforts and conveniences of urban living are now available to farm families, Ortman said that new rural homes will incorporate such features as central heating, tiled bathrooms and modern kitchen facilities.

Rapid electrification of rural areas of Michigan is making possible the incorporation in new homes of many labor-saving and comfort-making devices undreamed of a generation ago, according to Ortman. Rural Electrification Administration estimates disclose that more than 87 per cent of all farms in the state now receive central station electric service. Refrigerators, electric washing machines and deep freezing plants, as well as plumbing systems, will go into many new homes as a consequence.

CAP SMITH

Auctioneer And Appraiser
SECURE YOUR DATES FOR SPRING AUCTIONS
All Farm Sales Conducted On A 3 Per Cent Basis
Res. New Hudson
Phone South Lyon 4365



MORE FARMERS PLANT DEKALB than any other HYBRID CORN

Order Yours Today from

MELVIN FIEBELKORN, OXFORD, MICH.
FRED HILDEBRANDT, ROYAL OAK, MICH.
HOWARD MUSOLE, SOUTH LYON, MICH.

DHIA Testers Rate High In State

Three Oakland County Dairy Herd Improvement testers have been listed among the state's association reports as having outstanding records for the number of 305 day lactation records reported. E. W. Aikin, Assistant County Agricultural Agent states that for the first 6 months of the 1947 testing year, 19 associations in the state have completed 25 per cent or more of their 305 day records. This is according to the supervisor's report published by Michigan State College Dairy Department.

Harold Grewe, Association No. 3 tester leads the whole state with 62 per cent reported. Harold also led the state last year in the same department. Other testers to complete 25 per cent or more of these records were Stanley Pierce who stood fifth and Robert Ousnamer who stood 15th. Stanley is tester for No. 4 association and Robert tests for No. 2 association.

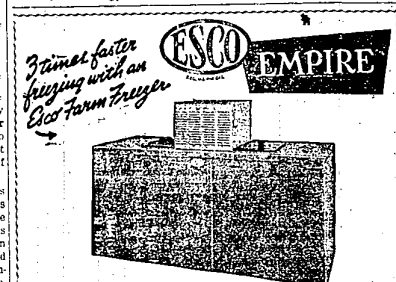
SPECIALIST GIVES TIPS ON DAIRY BARN PLANNING

Planning a new dairy barn is serious business, says J. S. Boyd, agricultural engineer at Michigan State College. A barn is something that will have to give service for many years to come, so it is important that it is correctly planned, placed and built.

The habits of cows' naturally make a difference in barn design. Since cows use large amounts of roughage, there must be adequate storage facilities for this type of food. The cow's hoof is adapted for walking on soft ground, and it's easy for her to slip on wet floors. Milking and feeding should be done regularly and the barn should be designed for quiet systematic work. Since cows perspire very little, construction of the barn must be such that they will not suffer under high temperatures and high relative humidity.

Besides providing for the cow, the farmer should make every effort to see that his chores are made easier. The dairy cow requires approximately 150 man-hours of labor per year. This is the highest of any farm animal.

Cutting a small door in a large door makes fewer heavy doors to open while doing chores, MSC farm labor specialists advise.



The quicker the freezing, the better the flavor! So—Esco has a separate freezing compartment with an airblast fan. Foods freeze 3 times faster than in still air! You get many other advantages, too. Large storage compartments. Lifetime lids, on top, to conserve refrigeration. Durable construction. Efficient, economical operations. Count on Esco! This company

has specialized in farm refrigeration equipment for 20 years. We gave you the first patented milk cooler. You'll have corn-on-the-cob in January! Strawberries shortcake for Christmas!—with an Esco Farm Refrigerator. Designed for better living, better eating. Descriptive booklet is now available. Write, phone, or drop in for your copy today.

Everett Implement Co.

Grand River at Orchard Lake Road Phone 1515

SALSBUURY SAL

Please, Boss—
Give Me REN-O-SAL
I'll Make Me Strong 'n' Tall!

Dr. Salsbury's REN-O-SAL is a drinking water medicine for chicks. Used with customary ration, it helps chicks grow faster, mature earlier! Economical, too.

Include REN-O-SAL in Your Chick Raising

SALSBUURY SAL

For a House Without Pollution, PAR-O-SAN's The Right Solution!

You can better disinfect brooder houses with Dr. Salsbury's PAR-O-SAN because it's efficient and it's pleasant to use! No "dippy" odor. Economical.

More Profit from Chicks— Let Us Show You How!

We Are Always in the Market for Grain
FARMINGTON MILLS
"Mills of Flour and Feed for Over 50 Years."
Phone 0026.

ORDER YOUR Winkler FULLY AUTOMATIC Stoker NOW

Why dread winter? Winkler Stokers have freed countless families from the old dreary fire-tending grind... given them new leisure.

WINKLER STOKER FIRING MEANS MORE LEISURE... GREATER COMFORT LESS EXPENSE

Inter-plan Transmission No Shear Pin

3 Year Guarantee

NO MONEY DOWN — ASK US ABOUT OUR THREE YEAR PAYMENT PLAN!

There Is No Shortage Of Coal

CLARENCE E. BARBER

PLUMBING AND HEATING CONTRACTOR

32725 Grand River Phone 0868



Who put the sapphires in Mrs. Murphy's basement?

Tommy Murphy was incredulous. "Gwan, how can there be sapphires in our basement?" he demanded. "Where are they, anyhow?" "Right in this little black box, son," grinned the Edison man, tapping the Murphy's meter. "In there you'll find tiny sapphire-jeweled bearings, made with the same skill and 'precision' that go into your dad's watch."

The careful workmanship in your meter is reflected in its absolute accuracy, whether it be in your basement or outside your home. And the man who checks that meter is so well-trained that he reads its figures as quickly and accurately as you tell time.

This emphasis on accuracy is part of the Edison way of doing business... it contributes to the uniformity and the year-round reliability of your electrical service.

THE DETROIT EDISON COMPANY