

# Selected Quality of FINE MEATS

ROUND STEAK POT ROAST 48c  
SIRLOIN STEAK OF BEEF 48c  
T-BONE STEAK

GROUND BEEF 42c

GROCERIES — FRUITS & VEGETABLES

For Deliveries PHONE 0996

## Robinson's Market

29404 GRAND RIVER AVENUE  
At Middlebelt

### Going Places Thanksgiving?



Be sure your car is in top condition. Don't take chances with delays and costly repair bills. Bring your car in today!

WINTERIZING MOTOR TUNE-UP  
GREASING

24 HOUR AAA TOWING SERVICE  
For Night Calls Phone 1359

Catlett Hi-Speed Service  
Grand River at Grace Phone 9022

### It pays to share the line



With telephone facilities still short, you may be one of those who share a party line. If you are, you'll want to co-operate with your telephone neighbors to get good service. Keeping your calls brief helps—so does spacing them some time apart. Remember, too, to put back the receiver after each call. And, if your neighbor has an emergency call to make, naturally you will let him have the line. Michigan Bell Telephone Company.

NOW



UNDER NEW MANAGEMENT

## FUSTON FEED STORE

(FORMERLY RAU FEED STORE)  
33314 W. SEVEN MILE ROAD  
NEAR FARMINGTON ROAD

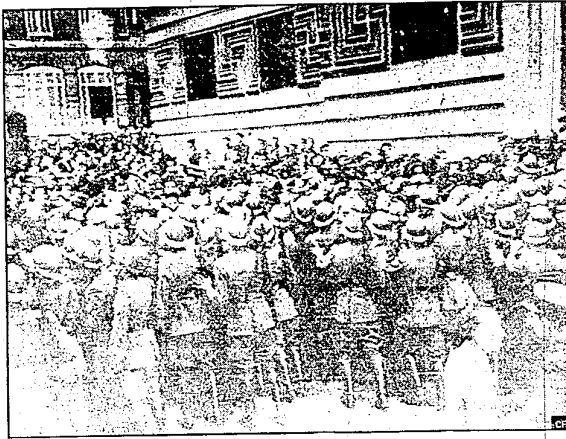
Phone Farmington 0671

- You Can Depend On These Quality Feeds
- CONKEY FEEDS
- ZINN FEEDS
- KASCO FEEDS

You can get top egg production by giving your hens the feeds we sell.

GARDEN-AID TRACTOR  
● We Deliver ●

### FRENCH POLICE BATTLE COMMUNIST LED MOBS



MARSEILLE, FRANCE — RADIO — SOUNDPHOTO — French troops moved into riot town Marseille to support mobile guards and police following seizure of the City Hall by Communist-led mobs and several hundred Mayors Jacques Carling. The troops entered the city as the government tightened security measures in the face of a Communist threatened general strike. This scene during the rioting shows police reserves pushing back the crowd in front of the Palace of Justice.

### Michigan OUT-OF-DOORS

Cold weather and the heat early season tracking snow in several spots continue to favor Michigan's deer hunting army — an army that is approaching last year's record hunt for size, according to figures from such checking points as the Straits of Mackinac and Drummond Island ferries.

A flurry of late supplementary orders for deer hunting licenses offset a previous lag in sales, but no specific estimate of the number of licenses issued has yet been made. In 1946, 350,000 hunted deer. Through the first week end of the season a reinforced staff of conservation officers made nearly 500 arrests, one of them of a party of four dining on elk in a hunting camp near Vanderbit. Two elk and 144 illegal deer — fawn and does — have been recovered to date.

In the early days of the season most districts were reporting a "normal" to "heavy" legal kill. With snow depths at two to eight inches and temperatures under 30, no immediate change was expected in the "ideal" and "good" ratings of hunting conditions.

The fifth week's payment by the conservation department for fox bounties totalled \$5,089 for 1,216 pelts. This is \$745 less than was paid in the previous week, as the take, for the first time since the law became effective, showed a slight decline.

National field trials for Britany spaniels, sponsored by the Michigan Britany Spaniel Club, are scheduled for November 28-30 in Highland state recreation area. Entries have been received from points as distant as Nevada and Vermont.

Both sides of the question of lifting yellow pikeperch (walleyes) over Newage dam will be heard at the public hearing Friday evening, December 5, in the civic auditorium in Fremont, called by the conservation's department fish division.

In recent years the department has supervised the annual transfer of several thousand walleyes around the dam, when they move up the river in spring spawning season. Upriver resorters claim the transfer is needed to maintain fishing above the dam; downriver people contend the operator robs them of fishing legitimately there. Partisans of both sides have been invited to state their case at the Fremont meeting, before the department makes its plans for the spring of 1948.

Establishment of a Pittman-Robertson project at Ledy lake, near Leonidas in St. Joseph county, will not change the lake's present sanctuary status, conservation department game men declare.

The little 28-acre lake is well known as a resting place and feeding place where geese passing over southwestern Michigan concentrate spring and fall, and has been a sanctuary since 1923. The project's purpose is to insure continued building up of a goose population.

and not to provide either a public spectacle or a place to hunt, game men say. One land purchase already has been made in the area. The project will be the smallest established under the Pittman-Robertson program, with only 440 acres inclosed within project boundaries.

In a day of "learning in the field," 22 junior high science and biology students hiked through Forest Huron state game area to find deer tracks in a sweet clover and buckwheat food patch, inspected cover planted for rabbits, and turned to for an hour with shovels, to plant seedling pines and shrubs.

District game manager Tom Osmer showed the pupils how to plant the trees, and explained the game management program for the game area. Conservation Officer Kenneth Duncan demonstrated the department two-way radio and fire-fighting equipment, and discussed the purpose and fine points of law enforcement.

Brush shelters sunk in Michigan lakes this winter will be marked with white-painted floats made of gallon jugs and cedar blocks, so anglers cannot fall to find them.

Prime purpose of the shelters is to concentrate the fish so fishermen may catch them more readily, says Horace Clark of the conservation department's fish division. In charge of lake and stream improvement. Some shelters installed a year ago were used by fish but not by fishermen, who had trouble finding them after a screen of weeds grew up. The floats will be anchored 30 inches below the surface — shallow enough to be seen, deep enough to clear out bogged motors.

Four crews now at work under Clark's direction are building brush shelters at Brevoort lake, Macinac county, Gratiot lake, Keweenaw county, Bear lake, Manistee county, and Lake Margerthe, Crawford county. When deep snows halt this work the men will begin logging supplies for next summer's stream improvement program.

The 1947 summer stream improvement work included placing 61 structures in the east branch of Fox River, Schoolcraft county, 37 structures in Hopkins creek, Manistee county, deflectors in Bear creek, Manistee county and oroson control jetties in Pere Marquette river.

The half-ton concrete blocks put into the Dorewic creek nine years ago were reset in new locations — the first maintenance work on them since their installation. Seven new structures were added, and Sumperville trout pond, which is to be filled in the spring, was cleared of brush. Another trout pond completed for the 1948 season is on Spring creek, in Bald Mountain state recreation area, Oakland county.

Along Maple river in Emmet county, excess streamside brush was cut to permit the stream to be fished, and current deflectors and deflectors were installed in the stream bed. Work on Huron river in Living-

ston county was the first stream improvement in Michigan for benefit of warm water fishes, in the case of smallmouth bass. Some of the current-changing structures built in the Huron with the huge concrete blocks are 60 feet long. They proved favorite fishing spots even before installation was completed.

Thirty-eight hundred acres in St. Joseph and Cass counties having little or no value as farm land will be improved for the production of game as the conservation department's "Three Rivers Pittman-Robertson project", nineteenth and newest of the state's southern Michigan state game areas.

Much of the land is low and wet and its woods cover is mostly valuable as fuelwood. Game men say it has promise of development for waterfowl, rabbits, raccoon, muskrats and other game. Initial purchase in the new project was the mill site on Mill creek.

### BELL RATE CASE RECESSED UNTIL FIRST OF YEAR

The Michigan Bell Telephone company rate case to be held in the next stage with indications that sessions will not be resumed until well after the first of the year.

As Perry B. Allen, assistant controller, testified Thursday and Friday to close the company's direct testimony, chairman Stuart B. White, of the commission, said he has no idea as to when the hearing will reopen.

The commission is awaiting the results of an audit and appraisal of the company's investment, revenue, and expenses which is being undertaken with the help of outside consultants at a cost of between \$250,000 and \$350,000. The recent special session of the legislature appropriated the smaller amount.

The company is required to reimburse the state for such costs. "The financial strength of the institution with all its implications on the quality of service to the customer is much more important than the monetary economy," said Allen in urging a return of about six and two-thirds per cent on the company's investment. He emphasized that the company should not be required to engage in the financing to meet its construction needs. All of the company's capital is now in capital stock.

Allen showed that the company's earnings are substantially lower than leading manufacturing corporations with which the Bell System must compete for capital to finance construction requirements.

### Antique Furniture

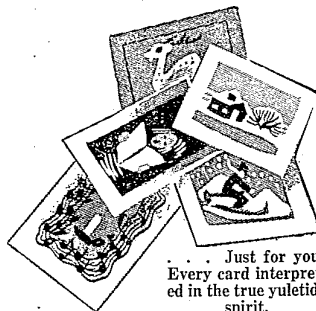
If you have furniture that was made before 1851 you may sell it as antique, according to a U. S. treasury department ruling. However if you have Egyptian furniture made in 1500 B. C. you have the best furniture made, according to present knowledge.

### British Dude Ranches

More than two million people in Britain now patronize British holiday camps, of which there are some 60 in various resort areas throughout the British Isles. The holiday camp is the British version of the American dude ranch and is a comparatively recent development.

## Christmas Cards

Distinctively Styled . . .



Just for you! Every card interpreted in the true yuletide spirit.

ATTRACTIVE COLORFUL DIFFERENT

ORDER NOW!

HAVE YOUR CARDS IMPRINTED WITH YOUR NAME

SEE OUR OUTSTANDING SELECTION OF NEW CHRISTMAS CARDS

The FARMINGTON ENTERPRISE  
23623 Farmington Road

## Army-trained men get more out of college



says E. R. Silvers, Dean of Men, Rutgers University



This long-experienced educator advises young men to take advantage of the training opportunities in the Army and Air Force before entering college. Here's what his new book, *Son of Tomorrow*, says:

### Recent high school graduates are handicapped

The tempo of scholastic life has quickened and most of our recent high school graduates find the pace too fast for them . . . They become followers, with little opportunity of developing the qualities of leadership which a college should give."

### Army experience enables student to go ahead faster

"The average seventeen and eighteen-year-old now planning to attend college would get much more out of college and contribute much more to it, if he first gave himself a chance to broaden his experience by going into service for at least eighteen months."

U. S. ARMY and AIR FORCE  
Recruiting Service

53 1/2 W. Huron Street  
Pontiac, Michigan

Keep Your Beauty up to Date . . . with a long-lasting, season-fashionable permanent moulded into a hairstyle to suit your face type.

**MARIE'S BEAUTY SHOP**  
20235 FLORAL  
2 Blocks South of 8 Mile & Grand River  
Telephone FARMINGTON 0918-R

**Tableware Specials!**

Carving Sets  
Swedish Cutlery  
STAINLESS STEEL Knife - Fork and Flint  
Flint CUTLERY With Case Hollow Ground Knife - Fork and Flint  
ALUMINUM ROASTERS Round and Oval Takes 15 lb. Fowl  
DUTCH OVENS Round CAST ALUMINUM

**DICKERSONS HARDWARE**  
Phone 0004

## Have You Tasted BREWERS' BEST BEER?

National Premium Pilsner Beer Deliciously Different  
The Big New Name in Beer TRY IT TODAY!

BREWERS' BEST ASSOCIATES, NEW YORK, N. Y.