

FARM FEATURES

A GOOD START!
They're on the new, improved
KASCO CHICK STARTER

Now... chicks get more nutritive value from a pound of Kasco Chick Starter than was ever believed possible. Kasco leads the way!

You'll be better satisfied if you feed KASCO CHICK STARTER

FARM SERVICE SUPPLIES

High-Performance Poultry and Livestock Feeds
Phone Farmington 0639 or Longacre 5-3262
COR. ORCHARD LAKE AND 12 MILE ROADS
FARMINGTON, MICHIGAN

QUALITY SEEDS
BULK and PACKAGE
For Your Farm and Garden
SEE US for QUALITY SEEDS

We Have BABY CHICKS on hand

LET US FILL YOUR ORDER NOW

Only \$16.25 per 100



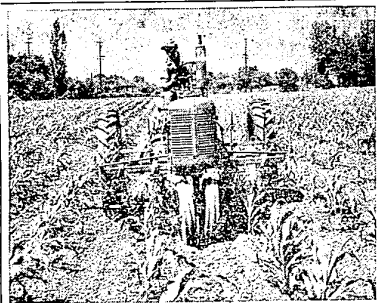
AUTHORIZED DISTRIBUTORS
— FOR —



FUSTON FEED COMPANY

33314 W. Seven Mile Rd.
AT FARMINGTON ROAD

Phone 0671



For planting and cultivating two, four or six rows, the Farmington C tractor is an ideal unit. This tractor, built by International Harvester, is designed for diversified farms of up to 120 acres; for large-scale vegetable farms, and as "second tractor" power for large-acreage farms. Shown here with two-row cultivator, doing a clean, fast job in corn.

EVERETT IMPLEMENT CO.

YOUR INTERNATIONAL HARVESTER DEALER
33314 Grand River at Orchard Lake Road Phone 1515

PHOSPHATE USE HAS ADVANTAGES FOR SOME SOILS

Michigan farmers can increase crop yields and build up the phosphate supply of their soil by applying super-phosphate this year, says Dr. C. E. Millar, head of the Michigan State College soil science department.

A limited supply of phosphate of the grade running 15 to 20 percent is now available. It has been difficult to obtain for a number of years since it is used in the manufacture of complete fertilizers. This year, however, sufficient super-phosphate is on hand so it may be bought for direct application.

Complete fertilizers are still hard to obtain in many cases, Dr. Millar points out. When this is the case, phosphate application has advantages. He suggests that farmers who are unable to secure their desired complete fertilizer will find that super-phosphate is a good investment.

On soils which have been recently manured, super-phosphate makes a very good fertilizer for many common crops. This is particularly true on the loam and clay loam soils which are relatively high in organic matter. Super-phosphate is not so well balanced for most crops on sandy loam and sandy soils. However, with a heavy manure application, super-phosphate might be used for common grain crops on sandy loam soils.

From 500 to 500 pounds per acre is a reasonable application of super-phosphate.

The better you feed the bigger your profit—so follow the simple, labor-saving Laro plan for productive poultry. Only 2 mashes and grains. Laro Chick Builder for first 12 weeks, then Egg Mash to maturity.

SAFE EASY ECONOMICAL

General Milt
Laro
Farm-tested
CHICK BUILDER
FOR THE FIRST 12 WEEKS

Farmington Mills

33408 State Street, Farmington
PHONE 0025

Meet Your Michigan

SALT TALK: WHERE U.S. ROUTE 10 NOW CROSSES SALT CREEK, EAST OF CLARE, ROSE MICHIGAN'S FIRST SALT WELL (1841) IT WAS THE FORERUNNER OF THE MICHIGAN OIL AND GAS EXPLOITATION.

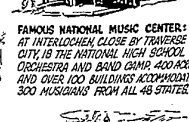


ELECTRIFYING FIRST: PORT HURON, BOYHOOD HOME OF THOMAS A. EDISON BOARS THE FIRST ELECTRIFIED UNDERGROUND RAILROAD. THE FIRST PORT HURON (1881) OPENED IN 1891, IT WAS ACCLAIMED AN ENGINEERING MARVEL.

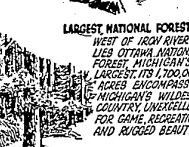


MICHIGAN FEATURE SERVES prepared by THE MICHIGAN TOURIST COUNCIL...Nail

FAMOUS NATIONAL MUSIC CENTER: AT INTERLOCKEN, CLOSE BY TRAVERSE CITY, IS THE NATIONAL HIGH SCHOOL CONTEST AND BAND CAMP. 400 ACRES AND OVER 100 BUILDINGS ACCOMMODATE 300 MUSICIANS FROM ALL 48 STATES.



LARGEST NATIONAL FOREST: WEST OF IRON RIVER LIES OTTAWA NATIONAL FOREST. MICHIGAN'S LARGEST, ITS 1,700,000 ACRES, IS A REMARKABLE WILDLIFE COUNTRY. UNEXCELLED FOR GAME, RECREATION AND RIBBED BEAUTY.



POULTRY DISEASE VACCINATION NOT ALWAYS EFFECTIVE

Newcastle disease is something that all poultrymen fear and hope to keep out of their flocks. A question to be decided is whether to vaccinate this spring to help out the risk of disease losses.

H. J. Stafeth, head of the department of bacteriology and public health at Michigan State College, says that it is a problem that must be decided on the basis that if Newcastle is prevalent in the area, it is probably wise to vaccinate. On the other hand, farmers in the areas where Newcastle is not a problem often decide to take the risk and not vaccinate.

Vaccination of chicks that are three weeks old will be unsatisfactory if they come from hens which have immunity to the disease. To get "takes" from the vaccine, all passive immunity which may have been carried from the hen, through the eggs to the chicks, must have disappeared.

All chicks are immune for two to four weeks if they come from eggs laid by hens which have had the disease or have been vaccinated, he explains. If chicks are to be vaccinated, Dr. Stafeth cautions that it should not be done until the chicks are at least four and preferably five weeks old.

Insect specialists say that Michigan will possibly have a grasshopper problem this summer. Should the pests come as expected, county agricultural agents will be notified of proper control methods to help farmers combat the threat to crops.

Sod Waterways Make Good Spring Farm Job

A list of spring jobs might include making good waterways on many Michigan farms, suggests C. M. Harrison, Michigan State College farm crops research scientist. Sod waterways help to hold land in place. They save topsoil and plant food that the rain would otherwise carry away. Other advantages include greater feed output from the increased grass area.

Harrison advises a legume-grass mixture adapted to your growing conditions for sowing in the waterways. County agents can help suggest good mixtures for your area. By liming according to the soil's needs and adding necessary plant food carrying nitrogen, phosphate and potash, you'll get sturdy roots and good topgrowth.

Establishing the sod waterways not only helps soil conservation on the farm but also may bid dividends, Harrison concludes.

Certification guarantees seed of high quality which includes freedom from disease and weeds. Other advantages include high germination, high crop purity, and uniformity. Michigan State College farm crops specialists each year inspect fields that are producing certified seed.

HIGHEST PRICES PAID
for
CAST IRON - CUTTER - BRASS
STEEL - RAGS and OLD BATTERIES
NORTHVILLE SCRAP IRON
and METAL
Mark at P. M. Post
Phone 185-W

Plow Shares Require Pre-Spring Check-Up

The plow is the number one piece of equipment on most farms and with proper care it will last for years. But Jack Schram, agricultural engineer at Michigan State College, says farmers sometimes allow plows to get in bad condition and thereby increase their work.

The share is a vital part and should be checked before spring work starts and repaired or sharpened. If it is needed, a dull share generally causes poor penetration and may greatly increase the draft of the plow.

Sheep Field Day Planned For July

A sheep type conference and field day to attract farmers from all parts of the state is planned for the Charlotte fairgrounds on Friday, July 15.

According to Graydon Blank, Michigan State College sheep specialist, program features will include a sheep parasite control demonstration and an exhibition of all the breeds of sheep common to the state. Sheep dogs will also be featured as part of the show.

UNKLE HANK'S

THERE'S TOO MANY GOOD FOLKS IN THIS HERE WORLD FOR A FELLER TO ASSOCIATE WITH THEM THAT'S NOT.



PLAY SAFE... come to CURT HALL! If your car needs expert body work, we're qualified to do the job. You will be pleased with our prompt, efficient service and the reasonable prices we ask.

CURT HALL
Phone 2380
HYDRAUTICS 2380
33224 GRAND RIVER - FARMINGTON

KEEP SPRING RAIN OUT!

THE SPRING RAIN SEASON IS ALMOST HERE. DON'T WAIT!



Repair Your Roof Now with Dependable Roofing From FARMINGTON LUMBER COMPANY.

AND IT IS PRICED TO FIT YOUR POCKETBOOK!

- Rolled Roofing
- Thick Butt Shingles
- Hexagon Shingles

THEY ARE MADE TO DO THE JOB!

See Us Today

Farmington Lumber & Coal Co.

"EVERYTHING FOR THE BUILDER"

32800 Grand River

Phone 0020

MacDONALD'S FARM FARMINGTON MILLS



There's no maybe about it... the FARMINGTON MILLS handle the finest farm and garden seeds. Now is the time to purchase your seeds... be assured that they are first quality... purchase from us.

ATTENTION FARMERS

We have just installed the latest seed treating equipment for treating seed grains for planting.

Just Received Our
SPRING SUPPLY OF FIELD GRASS SEEDS

MILLERS OF FLOUR AND FEED FOR OVER 50 YEARS
FARMINGTON MILLS
ESTABLISHED 1895
33408 STATE ST. Delight
P. L. GILDEMEISTER, OWNER
FARMINGTON - PHONE 0026



"PLENTY OF RUNNING WATER
UPS OUR MILK PRODUCTION 20%"

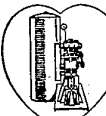


*Says
WILLIAM MANSKA
R.F.D. No. 1
Armada, Mich.

William Manska declares that running water is the foundation of his electrified farm—that he would never be without it. He points out that in addition to increasing milk production 20%, milk house chores are done far more easily and quickly.

Mrs. Manska agrees, saying, "Our complete running water system saves us so much needless work! We know our running water is safe to use in any quantity... it's always fresh and sparkling clear at the turn of the tap!"

Thousands of other farmers agree that running water is the most important single gift of electricity—that, truly PROFITS GROW WHEN WATER FLOWS!



The heart of modern living on the farm.

ENLARGE YOUR SYSTEM

Complete water systems and electric pumps of all types and capacities, for use in shallow, medium or deep wells are available for immediate installation. See your friendly Edison Farm Service Advisor for full details. There's no obligation to you.

PROFITS GROW
WHEN
WATER FLOWS



The DETROIT EDISON CO.

FORD

APPROVED MOTOR INSTALLATION

- 100 H.P. FORD OR MERCURY MOTOR
- FULLY GUARANTEED

At The Outstanding Price of

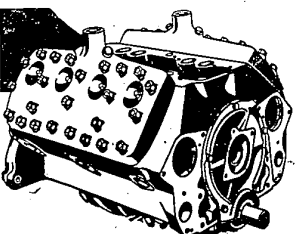
ONLY \$139.50

Exchange

Don't miss this chance to cash in on a real bargain,

- NO DEPOSIT
- NO CHARGE BACK

See your progressive FORD Dealer today and get in on this big bargain value that insures you quality plus economy.



12 MONTHS TO PAY

- NO MONEY DOWN •

Use Our Courtesy Plan



SMITH-BERLING COMPANY

"SERVICE STERLING"
PHONE 2390
GRAND RIVER at ORCHARD LAKE ROAD
FARMINGTON, MICHIGAN

Don't Gamble With Michigan's Highways

Re-Elect

State Highway Commissioner

CHARLES M.

ZIEGLER

20 Years Experience with State Highway Department

You Know Ziegler's Ability By His Record:

... 2,734 miles of new concrete pavement and surfacing despite the war years—

... a 3-year postwar highway building program completely under contract and moving rapidly to completion—

... savings of over \$1,000,000 yearly thru full cooperation with local units of government in trunkline maintenance—

Retain Proven Highway Leadership

VOTE FOR STATE HIGHWAY COMMISSIONER

CHARLES M.

ZIEGLER

VOTE REPUBLICAN, MONDAY, APRIL 4th

Paid Political Adv.