

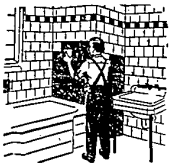
FOR BOOKKEEPING AND ALL TAX RETURNS

Call Farm. 0446

A PLAN TO FIT YOUR BUSINESS FOR PENNIES PER DAY

Farmington Bookkeeping Service
23037 Floral Ave. Farmington, Mich.

Wall Tile BUY DIRECT and SAVE



Modernize your Bathroom and Kitchen, Fixtures, Walls and Floors.

ALL WORK DONE BY

EARL KLINE

GUARANTEED

* Free Estimates *

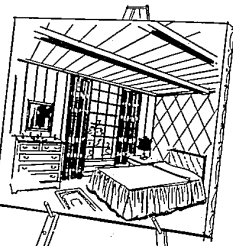
Clay — Aluminum — Plastic — Rubber — Asphalt
LIVONIA TILE COMPANY

Phone Livonia 4424

34151 Schoolcraft

Plymouth, Michigan

NEW ROOMS



pretty as a picture

CELOTEX
INSULATING INTERIOR FINISHES

Here's the quick, easy, low-cost way to modernize dingy, dilapidated walls and ceilings. Decorate with CeloTex Insulating Interior Finishes—the ideal construction material that builds, insulates and decorates...all in one operation! There's no fuss, no must! The boards go up fast, enhancing the beauty of any room, no matter what size, shape or style! Available in a wide range of exciting new colors. Come in today—investigate for yourself!

FARMINGTON LUMBER & COAL CO.

32800 Grand River

Phone 0020



The better you feed the bigger your profit—follow the simple, labor-saving Larro plan for productive pullets. Only 2 mashes and grains. Larro Chick Builder for first 12 weeks, then Egg Mash to maturity.

SAFE EASY ECONOMICAL



Only two mashes instead of three the labor-saving Larro way.

Larro
Farm-tested
CHICK BUILDER
FOR THE FIRST 12 WEEKS



Only two mashes instead of three the labor-saving Larro way.

Larro
Farm-tested
CHICK BUILDER
FOR THE FIRST 12 WEEKS



CONKEYS
STARTER AND BROILER
COMPLETE CHICK RATION
HIGH ENERGY STARTER
AND BROILER

Today, this oldest name in starting feeds identifies the NEWEST developments in poultry nutritional research—developments which have reduced chick mortality to a minimum, substantially increased egg production and hatchability, grown heavy broilers faster and at less cost than ever before.

Yes, you can assure your chicks a better-than-ever start this year with

CONKEYS
STARTER AND BROILER
COMPLETE CHICK RATION
HIGH ENERGY STARTER
AND BROILER
BRYCE FEED STORE
MELVIN & W. 8 MILE ROAD, Farmington

FARM FEATURES

Corn Alone Is Not Good Feed For Pigs

Feeding corn alone to pigs is a big mistake. Farmers have plenty of corn this year and protein supplements are high compared to corn, so W. N. McMillen, Michigan State College swine authority, thinks many farmers may make this mistake.

"Corn alone is not good feed for any size pigs. It is rich in starches and food material that puts fat on animals, but lacks proteins, minerals, and vitamins which are necessary for young pigs; also pregnant and nursing sows," McMillen contends.

Each pound of supplement fed will replace four to five pounds of grain, and McMillen says that will more than pay for the cost of the supplement.

"Cheap Chicks" May Prove To Be Costly

You can't buy "cheap" chicks and be assured of any breeding back of them, says Howard C. Zindel, Michigan State College extension poultryman.

Price is not important, Zindel thinks, if you pay only for what you get. Chicks with good breeding quality behind them necessarily cost more than "average, run-of-the-mill" chicks.

The farmers' guarantee of getting quality is buying from reliable hatcheries that back up their guarantees.

Last year Michigan hatcherymen, operating under the National Poultry Improvement plan, sold more than a million chicks and the livability returns at two-weeks of age showed nearly 98 per cent.

WANT ADS BRING RESULTS!

J. KAUFMANN CO.
ARCH SUPPORTS
8919 Fennell
Webster 3-4535

• ORTHOPEDIC AND SURGICAL APPLIANCES
• SURGICAL BELTS
• ELASTIC STOCKINGS
• TRUSSES
• BRACES — All Types
• ABDOMINAL SUPPORTS

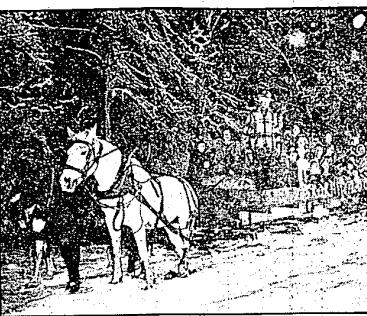
George Lockhart

Yellow American Society of Piano Technicians

Pianos Tuned - Rebuilt

Reconditioned

PHONE Northville 678-W



OFF-SEASON TRADE—A winter hayride is easily provided by putting the hayrack on skis. That's how the North Shore Polo Club of Skokie, Ill., took advantage of a recent snow in the Chicago area. Driver Mike Morse takes his party out in Skokie forest preserve.

NAME BARLEY, OAT VARIETIES FOR MICHIGAN SEEDING

Recommended varieties of oats and barley for spring planting were announced this week by Michigan State College farm crops specialists. K. J. Frey, crops specialist, believes Eaton, Kent and Clinton are the most adapted oats and Bay or Moore the best barley varieties for Michigan farmers in 1950. Upper peninsula growers' of oats should use the Bonham variety, Frey reports.

Eaton and Clinton oats are recommended for planting on more fertile soil because they have stiff straw. Eaton and Kent, according to Frey, are preferred to Clinton in the thumb region because they have white kernels and a more even growing habit. He thinks farmers using Clinton will like Clinton 55 or Clinton Reselection instead of the original variety because of uniform height and maturity of the crop.

Kent is recommended where lodging is not likely to occur. Frey thinks it will do well following corn or sugar beets in the thumb region. Kent has a better test weight than Eaton and should replace it when there is little danger of serious lodging.

Bay and Moore are maturing barley with a stiff straw and good yield records. Although the seed is hard to get, Moore has considerable resistance to mildew, stem rust, and spot blotch. Bay is a few days earlier maturing than Moore, and Frey has found this to be of infinite advantage when the weather is hot early in the season and blasts the barley heads. With Moore difficult to obtain, large quantities of Wisconsin 35 may be grown in Michigan this year, but should be replaced by Moore or Bay as soon as seed is available, Frey recommends. Mars is the recommended variety of barley for muck soils.

March 15 Deadline For Bean Allotment

March 15 has been set by the Oakland County PMA Committee as the final date for filing applications for a 1950 dry edible bean acreage allotment for any farm on which no beans were produced in the past three years — 1947, 1948, and 1949. Walter R. Cook, chairman of the County PMA Committee, said that bean acreage allotments for 1950 will be established on the basis of the acreage planted to beans during 1947, 1948, or 1949 on each individual farm.

Provisions have been made, however, for the establishment of bean allotments for farms which have not grown beans in any of the past three years. Allotments in such cases will be established only if the owner or operator applies for an allotment to the County PMA Committee and if such application is filed prior to March 15. Only those growers who have been assigned acreage allotments and who plant within their assigned allotments will be eligible for price supporting loans and purchase agreements on beans next fall when the 1950 crop is harvested.

Good Breeding Boosts Dairy Production

Four young cows in the herd of Ora Pritchett, Sandusky, each from a different Holstein bull in the Michigan Artificial Breeders Cooperative stud, produced more than 450 pounds of butterfat each in their first lactation period. A. C. Baltzer, extension dairyman in charge of artificial breeding work in Michigan, says each of these young animals produced approximately 50 pounds more butterfat than their dams produced in any year.

Demand from members in the 144 local associations in Michigan has been increasing each month and Baltzer thinks 15,000 cows will be artificially bred this month.

PEST CONTROL GROUP SETS MARCH 15, 16 FOR MEET

New extermination techniques and advanced professional standards will be under study in the annual Michigan Pest Control Conference at Michigan State College on March 15 and 16.

Control of pests has become a major significance to Michigan's multi-million dollar farm crop industry, officials said. The conference will be sponsored by the MSA entomology department and the Michigan Pest Control Operators Association.

Leading figures in insect and rodent pest control will highlight the two-day session. Harold Jennings, president of the National Pest Control Association, will deliver the main address at a Thursday night banquet in the Lansing Porter Hotel.

Total commercial fish haul from Michigan waters of the Great Lakes in 1948 had a \$5,100,000 valuation, according to the conservation department's fish division.

Approximately one-half of the lakes in Michigan are less than 10 acres in surface area and only 19 lakes have more than 5,000 acres.

If everyone eats a dozen eggs more in 1950 than in 1949 there should be no egg surplus, reports Michigan State College authorities. Eggs are a thrifty food now and will give your family cheap protein.



INVITATION TO BEAUTY

Simple — Youthful — Easy-To-Manage. Requires Only a Brush Stroke.

LAREE'S BEAUTY SALON
Phone NORTHVILLE 429-J
43230 Grand River, Novi.



For Spring Safety LET US CHECK YOUR CAR

Complete check from stem to stern, including adjustments where needed. Low cost. Drive in now!



WE SERVICE DYNA-FLOW — HYDRAMATIC FLUID DRIVE

We Rebuild Old Engines Install New Engines Give You Complete Brake Service Using Only AUTHORIZED Manufacturers Parts For All Makes of Cars

PHONE 0330 GENERAL AUTO REPAIR
JAMES E. LAYN
33712 Grand River

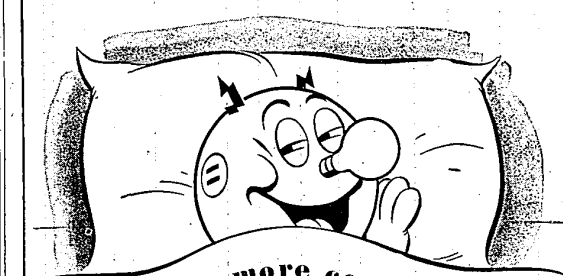
OUR FARMALL MAN, SAYS:



"DRIVE THIS FARMALL CUB"
Get the Facts right from the Driver's Seat on your own farm. Test the Farmall Cub tractor on any job you want to do. Call me TODAY for a Farmall Cub Demonstration Date.

FARMALL—TIME-PROVED FOR IMPROVED FARMING

EVERETT IMPLEMENT CO.
YOUR INTERNATIONAL HARVESTER DEALER
Grand River at Orchard Lake Road Phone 1515



You'll sleep more comfortably...

when you sleep under an **ELECTRIC BLANKET**

Let it snow—let it freeze—there's still no need to burden your sleep under a pile of heavy bed clothes. Just snuggle under one light weight electric blanket and settle down for a real night's rest. Never too warm, never too cool—you select the temperature you like best... automatic controls keep it that way. Today... see the electric blanket at your favorite department store, appliance shop or at any Edison office.



Detroit Edison

Larro Farm-tested FEEDS

Fill in your name and address on the lines below. Then bring either the coupon or the entire folder to our feed warehouse. We will allow you 50c credit on the first purchase of a 100-pound bag of Larro Chick Builder.

NAME _____

ADDRESS _____

ACCEPTED BY _____

50c

NOT GOOD AFTER JUNE 1, 1950

MILKMAKER CHICKS STARTED

LARRO DEALER

MILLERS OF FLOUR AND FEED FOR OVER 50 YEARS
FARMINGTON MILLS
ESTABLISHED 1895 L. F. GILDEMEISTER, OWNER
33408 STATE ST. FARMINGTON, MICH. PHONE 0005