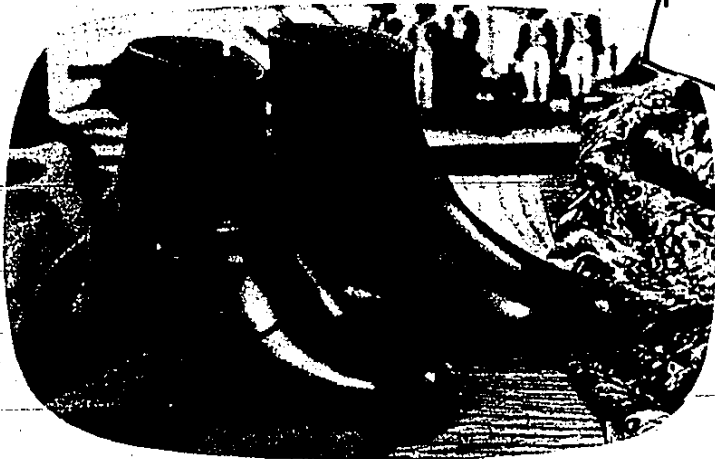


it's EASTER ... at NAPS

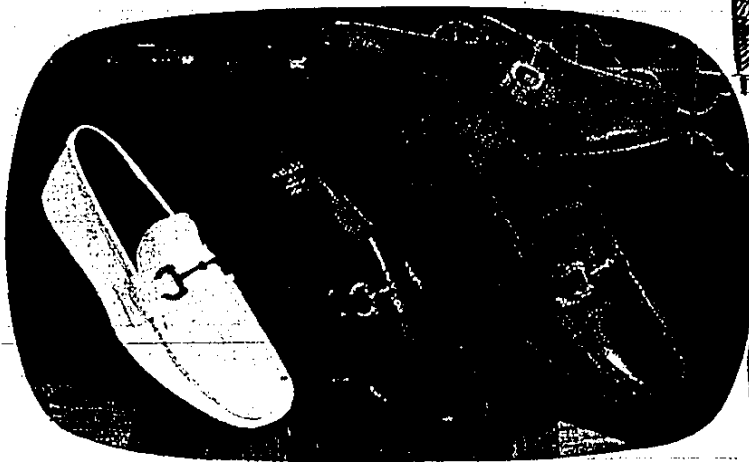
MICHELLE NESBITT,
Local contestant for MISS MICHIGAN
UNIVERSE, Enjoys the Selection of
Spring "COBBIES" at NAPS SHOES



Cobbies • Red Cross • Socialites



Freeman



Wm Joyce

Easter
Stride Rites



"From The Top of Your Head To The Tip of Your Toes"

BIG, TALL, LARGE, SMALL --NAPS SHOES --
AND MEN'S WEAR CAN FIT THEM ALL

NAP'S SHOES

26405 PLYMOUTH

Between Inkster and Beech
3 Floors to Serve You

FITTING LADIES SIZES 4-12 AAAA to EEE

MEN'S 6-15 AA to EEE

CHILDREN'S A to EEE

KE 4-8260

NAP'S MEN'S WEAR

26425 PLYMOUTH RD.

Between Inkster & Beech
THE COMPLETE MEN'S STORE

FITTING SUITS 35-60

PANTS 27-60 SHIRTS 14 1/2 to 20

KE 4-8260