

Motors and Fishing Equipment

Mercury
Outboard Motors
BOATS & TRAILERS

STAN'S BAIT & TACKLE
GRAND RIVER and 10 MILE

Rangers Issue Warning Of Forest Fire Danger

Fishermen and others frequenting forested areas again are asked by conservation department firemen to be extra careful with cigarettes, matches and campfires. Department field officers are refusing to issue burning permits to residents of high hazard areas and are being extremely cautious in fulfilling requests in other localities.

Stiff Lambs Cured By Vitamin E

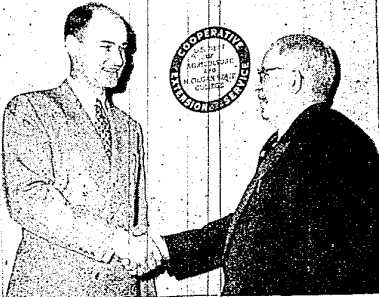
Stiff lamb disease can be prevented and cured by supplying the needed vitamin E. L. H. Blackless, Michigan State College animal husbandry researcher, told farmers this week.

Prevention lies in feeding when corn meal is five to ten per cent of the ewe grain ration. The disease can be cured by feeding vitamin E in the form of alpha tocopherol capsules to lambs affected as soon as the stiffness of one or more legs is recognized. Research at MSC shows that the stiffness is due to poor muscle nutrition from a deficiency of this vitamin E.

Symptoms include stiffness or a slight limp or dragging of one or more legs. Recovery will be hastened by confining the ewe with her lamb in a pen limiting exercise of the affected animals. If not treated, the heart muscles often are affected, causing death. Lambs with the disease must obtain vitamin E, either from their mother's milk or directly in feed or capsules.

FARM NEWS

Extension Directors—Future and Present



D. B. Varner, left, newly-appointed director of the Michigan State College Cooperative Extension Service, receives congratulations from Director C. W. Ballard who will retire. Varner, extension agricultural economics specialist, joined the MSC staff in 1949. Director Ballard has been with the college since 1915 and has directed the Cooperative Extension Service since 1948.

ANTHRAX NOT SPREADING TO DEER HERDS IN STATE

There are no known cases of anthrax disease spreading from cattle into deer herds and no outbreaks are expected if proper farm control measures are taken when needed, the conservation department points out.

"The worst I anticipate is a small local outbreak or two, if that," assures Dr. Stanley C. Whitlock, game research head. Game men began showing extra concern when anthrax infection spread into cattle as far north as Oceana County or into deer country.

Afflicted cattle, which usually die within 48 hours from the blood poison type infection, should be burned on the spot rather than buried, Whitlock recommends.



You be the judge

Just try Dr. Salsbury's Ren-O-Sal Tablets in poultry drinking-water. See the difference! Chickens will grow faster, feather faster, have better coloring, and lay sooner. Ren-O-Sal contains "3-Nitro," remarkable growth-stimulating compound. Profit with Ren-O-Sal when you need poultry medicines ask for...

DR. SALSBUARY'S



Up the creek...

Without Sulquin. That's my situation. With this coccidiosis infection, I need Sulquin --- and fast! Dr. Salsbury's Sulquin contains sulfaquinoxaline, which checks coccidiosis effectively. Sulquin also controls acute fowl cholera. There's nothing quite like Sulquin. Try it!

when you need poultry medicines ask for...

DR. SALSBUARY'S

BEE GEE



NORTHWEST PROPANE
HEAT & COOKING GAS
32455 NORTHWEST RD.
MAYFAIR 6-2415

Pigs Need Extra Care At Weaning

"Weaning involves a great deal more than just separating the sow from her pigs," J. A. Hoefler, Michigan State College animal husbandman, points out.

"A good hog man begins preparations for weaning long before it actually takes place," he adds. "A good pig should weigh 35 to 40 pounds at weaning time, should be vaccinated and started on dry feed."

Cry feeding a fortified pig starter should begin by the time the pigs are three weeks of age. They should be vaccinated four weeks, vaccinated at six weeks and weaned at eight weeks. Hoefler suggests reducing the sow's feed slightly four to five days before weaning.

Another suggestion is to continue self-feeding the pig starter ration to pigs for at least one month after weaning. It parasites the present spray with Imdane or BHO, and worm with sodium fluoride.

Hoefler especially recommends a good pig starter ration, emphasizing the fact that supplements the declining milk flow of the sow during the latter part of the lactation period. Thus, you end up with fewer runts and with much heavier pigs at weaning time. In addition, the pigs will go through castration and vaccination with far less shock and will be set back less with weaning.

Weaning is a critical time because the pig is very sensitive at that time. Most runts develop because the feeder has overlooked some management or feeding detail about that time, he concludes.

POTATO GROWING PLAN OFFERS ADDED INCOME

A money-making idea for upland soil potato growers who plant foundation seed or selected certified seed potatoes is being sponsored by the Michigan Crop Improvement Association, according to L. V. Nelson, extension specialist in farm crops at Michigan State College.

The idea is for farmers to grow tablestock and certified seed in combination on their farms in 1952. That makes it possible for potato growers to sell the large small potatoes — one and one-half inch minimum — as certified seed.

One advantage is that both the grade and quality of the tablestock will be improved and the entire crop can be sold to best advantage. In addition, this production plan will furnish, at a premium price, small size certified seed potatoes. The program will increase the volume of sales per acre and provide seed requirements for the farmer.

Many potato growers are faced with seed prices this spring that are two to three times as high per bushel as they get per-bushel for the crop they sold last fall. With this combination program, a grower could sell the small potatoes as certified seed and buy foundation seed, or plant the certified seed and grow table stock.

Here's a Harrow That Cuts Deep and Is Easy to Handle



BOLENS HUSKI

Improve your crop yield with this disc harrow, powered by the BOLENS HUSKI tractor. Weeds, clumps, clods — it cuts them all... quickly, efficiently... and conditions your soil for maximum profit returns. Depend on this "Packaged Implement" for full satisfaction.

See it in our showroom.

Everett Implement Co.
"Your International Harvester Dealer"

31200 Grand River at Orchard Lake Road
Phone 1515

TOLEGRO Lawn and Garden Fertilizer 2-2-30
NA-CHURS LIQUID PLANT FOOD 7-14-7

WE DELIVER Mondays, Wednesdays and Fridays

MILLERS OF FLOUR AND FEED FOR OVER 50 YEARS

FARMINGTON MILLS

ESTABLISHED 1895
33408 STATE ST.

L. F. GILBERTSON, OWNER
FARMINGTON, PHONE 0226

We are now showing the **NEW "Dutch Boy" COLOR GALLERY**

See the greatest color-selecting aid we've ever offered — "Dutch Boy's" sensational new Color Gallery! It's positively loaded with lush new colors — every one a work of art.

Each color comes in either Flat or Semi-Gloss! Thus you can paint walls and woodwork the same color. Or you can use dramatic deep tones in kitchen or bath! If you've a mind to! You'll find colors for every room in your home in the Color Gallery!

Take home free swatches. Note that each lists 3 harmonizing colors. Check swatches against rugs, draperies, upholstery... under both artificial and day light. You'll think of scores of dramatic color schemes. See the "Dutch Boy" Color Gallery here!

FARMINGTON LUMBER & COAL CO.
32800 Grand River Phone 0020

High Yielding Alfalfa Seed Varieties Scarce

Seed of the highest-yielding varieties of alfalfa is scarce this spring so if you haven't been able to find the kind you want, these suggestions by S. T. Dexter, Michigan state farm crops specialist, may help you pick an alternate.

If you can find Michigan Grimm or Hardigan, or other northern-grown Grimm, or northern-grown Ludak, you can depend on it to give the highest yields for the first two years of hay harvest.

Dexter says that if you are planning to leave the field for more than three years, and if bacterial wilt is causing trouble, it should be worth your while to try Ranger, a new wilt-resistant variety.

Although this variety doesn't yield quite as well as some, is less winter hardy and is more troubled by leaf diseases, it still is an acceptable variety that can survive wilt infection far better than can Grimm or Hardigan. Northern-grown commonbuds have not yielded as well as Grimm, nor do they have wilt resistance, Dexter points out.

Dairymen can help prevent milk from having a bad flavor if they are careful about their feeding methods, say Michigan State College extension dairymen.

They insist on staying young!

International Trucks are engineered to stay young in spite of the toughest hauling conditions.

They are built that way because our 45 years of heavy-duty truck building experience proves it pays. That's why more than half of all the International Trucks ever built are still making money for their owners. That's why Internationals give you the kind of young-truck performance you want.

If you are considering a new truck, why not stop in soon?

Buy on Proof!
Before you buy any truck, get the facts about Internationals from actual owners. Let us give you a list of persons in this area who have recently bought new Internationals like the one you are considering. Check with any or all of them. Find out how Internationals cut hauling costs on jobs like yours.

CURT HALL
Phone 2680
33224 Grand River Farmington, Mich.

INTERNATIONAL TRUCKS
"Standard of the Highway"