

CACTUS-FLOWERED ZINNIAS are just one example of the myriad of flowers you can grow under bright sunny skies and well-drained soil.

## Lucky You! Your Locale Is Perfect For Gardening

If you have a bright sunny spot and the soil is moderately well-drained — not too wet, not too dry — with moderately good texture and fertility and neither acid nor alkaline, there are few limits to what you can grow. You have an immense number of plants from which to choose.

From a landscape point of view decide first on the size and form of plant that will create the effect you desire, then select the plant that fits your needs.

Large shade trees include maple, ash, oaks, linden, and many others.

Smaller ornamental trees have decorative flowers or fruits. They provide considerable shade and in a small yard may be a better choice than a large tree. Flowering crabs, magnolias, mountain ash, hawthorns are among those that can bring beauty to the yard.

Shrubs to use include lilacs, deutzia, forsythia and spireas. In addition to these, many of the shrubs that will grow in specialized situations such as wet soils or dry soils are not readily particular and will also grow in ordinary soils. In this category are barberry, honeysuckles, viburnums and numerous others.

The flowers that can be grown know no limits. Petunias, zinnias, alyssum, verbenas and others are annuals that can bring summer cheer. Perennials run the gamut including iris, Oriental poppies, daisies, day lilies, phlox and chrysanthemums.

So if you are lucky enough to have a home to landscape under these near-ideal conditions — shout hurrah. It should be a whole lot easier for you to have and maintain beautiful gardens.



Easy-to-grow petunias.

# COMPOST --

## Gardener's Best Friend

Compost is the gardener's best friend. It is an excellent source of organic material --and costs absolutely nothing.

Every gardener should have a compost pile. Locate it in a place that is convenient to get to, but not in plain view.

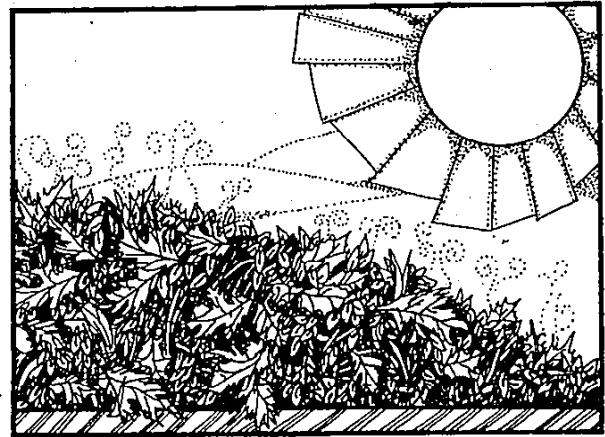
The compost pile is made by piling up layers of leaves, grass clippings, weeds and even vegetable peelings. Every eight to 12 inches spread a thin layer of garden soil or old compost. This provides the bac-

teria necessary to break down the green material into humus.


Keep the pile moist. A flat or saucer-shaped top will help collect water. Wet it down once in a while during dry spells.

Oxygen is needed for the decay process so keep it loose. Don't pack it down; turn it over and stir it up a few times during the summer.

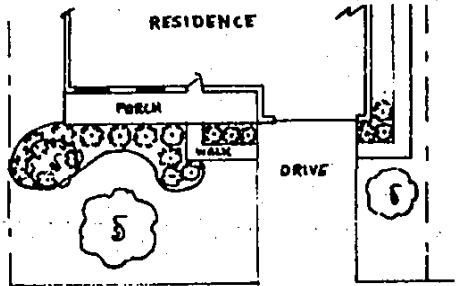
By next year the useless greenery will have been converted into valuable humus that can be worked into flower beds and used to top dress or mulch shrub beds.



**WAYNE JONES SAYS:** Don't wait to do your landscaping because you don't know how! We will draw a plan for your home, and give you our expert advice on what to plant and how to plant it. We draw free plans to scale for our customers. Just bring in your house and lot dimensions and a picture, if possible. Your title survey usually has all this information on it. We can do the planting for you, for an additional labor charge.




**THIS IS A 56 FT. HOUSE ON A 76 FT. LOT, WITH THE FOLLOWING PLANTING MATERIALS:**



4 Armstrong Junipers .....	35.80	1 Colonesstar Horizontalis .....	3.95
3 Spreading Yews .....	26.85	2 Brown's Yews .....	19.90
1 Flowering Crab .....	9.95	1 Potentilla .....	3.50
2 Golden Vicary .....	3.90	1 Thundercloud Plum .....	7.95
2 Compact Pfitzers .....	15.90	1 Silver Maple .....	7.95
1 Cistena Plum .....	4.95		
2 Dwarf Yew .....	19.90		
		<b>TAX \$4.41</b>	
		<b>TOTAL \$106.94</b>	

**WE HAVE BEAUTIFUL EVERGREENS & FLOWERING SHRUBS TO SUIT YOUR NEED & BUDGET**



**Plymouth Nursery**

**9900 ANN ARBOR ROAD**  
(M-14, 5 MILES W. OF SHELDON ROAD)  
**Call 453-5500**

HOURS: Daily 9a.m. - 6p.m. Sunday 10a.m. - 6p.m.

## TO REMEDY ACID SOIL

Acid soil poses certain problems and restrictions.

Many shrubs and trees will not grow in acid soil. However, many of our most treasured plants are acid loving. Flowering dogwoods and shad grow well in acid soil.

Among the shrubs are azaleas and rhododendrons, mountain lau-

rel, blueberries, hollies and heaths and heathers.

Aloes, the common juniper and all its varieties grow well in acid soil.

Among the annuals that tolerate acid soils are calliopsis, flowering tobacco, verbenas, and marigolds. Baptisia, coreopsis, platycodon and silene are among the few perennials that are acid tolerant.