

free ice cubes FOR YOUR PARTY!



Big, insulated 'Party-Pack' of cubes from the new **Servel** AUTOMATIC ICE-MAKER Gas or Electric Refrigerator!

Serve the 'new look' in ice cubes at your party—and give your friends an interesting new topic of conversation! They're right from the amazing Servel Refrigerator that makes ice cubes without messy trays—and puts 'em in a basket—automatically! Come in—pick yours up today! No obligation, naturally!

RICHARDSON APPLIANCE AND HEATING
32623 GRAND RIVER AVENUE
NEAR MAPLE AVENUE
Farmington, Michigan

OUR LAST HATCHING OF BABY CHICKS

JUNE 18
WHITE ROCKS — NEW HAMPSHIRE REDS
Get Your Order In Now
B. P. S. PAINTS SUPER KEMTONE
KEMGLO
INSECTICIDES
TANK AND HAND SPRAYERS
Complete Line of Gates V-Belts and Pulleys
For Home and Shop

Specials
4 Foot Step Ladder --- \$3.00
Farm Fence ----- 13 1/2¢ ft.

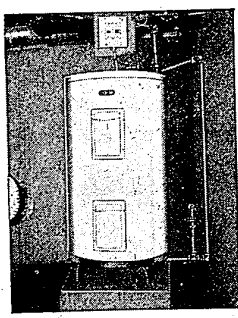
We Repair Electric Fans and Sump Pumps
Replace Window Glass In Our Shop

FERTILIZER
SACCO — CATTLE MANURE — VIGORO
MELVIN FEED & HARDWARE
30015 W. 8 Mile Rd. Phone Farmington 9072

Best Deal for Hot Water ELECTRIC, of Course!

Fred Van Gilder, Livingston County, knows extra value when he sees it. That's why he has an electric water heater in his home and another in his milk house. This combination entitles him to a special rate that's a real money-saver. 30 gallons of 160 degree water daily in the milk house costs him only about 4¢ a day. And there's no work, no worry, no flame to fuss with.

Ask your Edison Farm Service Advisor about our combination rate. You too will agree it's the best deal for hot water.



IN THE HOME, this electric water heater for dishes, baths, laundry and other household asks, Regal convenience!

IN THE MILK HOUSE, a 30 gal. electric water heater keeps utensils sparkling clean, bacteria count low, milk checks high.



DETROIT EDISON 60 Years of Electric Service

FARM NEWS

SICK TRACTOR GIVES SYMPTOMS TO AILMENTS

The color of the exhaust may be the indication of what is wrong with your tractor engine, says Robert G. White, extension farm machinery specialist at Michigan State College.

If the tractor's exhaust pipe flames black smoke, for example, it is getting more gas than it needs. The air-fuel mixture may be too rich. Or, says White, the black smoke may mean an improper float level or a plugged air cleaner.

When your tractor turns bluish smoke, the engine is burning oil. Oil in the combustion chamber means that valves or piston rings are worn or stuck.

White suggests having a mechanic find out the trouble and repair it before the job becomes more costly.

Watch Strawberries Closely For Moisture

Probably some of you are already picking ripe strawberries. It may seem a little far fetched now, but a week of real dry weather would cut the crop short and irrigation will be needed to keep the crop coming in.

On the west side of the state, irrigation water has already been applied to strawberries because of dry soil. Last year, the crop was cut in half because of dry weather during the latter part of the picking season. If you have irrigation facilities, keep a close watch on your soil moisture.

John Clappison Sells Insurance

John Clappison Sells Insurance

ARTHRITIS?

I have been wonderfully blessed in being restored to active life after being crippled in nearly every joint in my body and with muscular soreness from head to foot. I had Rheumatoid Arthritis and other forms of Rheumatism, hands deformed and my ankles were set.

Limited space prohibits telling you more here—but if you will write me I will reply at once and tell you how I received this wonderful relief.

Mrs. Lela S. Wier
2803 Arbor Hills Drive
P. O. Box 3122
Jackson 7, Mississippi

Michigan Economist Forecasts Farm Income In 1953 And 1954

Dr. T. K. Cowden, head of the department of Agricultural Economics, Michigan State College at East Lansing, addressing the eighth annual convention of the American Plant Food Council recently, predicted that "agricultural net incomes will be lower in 1953 than in 1952 by something like ten per cent," that "in 1954 we will likely have some further decline," and following "barring an all-out war... agriculture may be headed for another period similar to that which existed between 1929 and 1933" which was marked by "fairly good industrial activities, one in which farm costs remained relatively high in relation to prices received by farmers."

"It is wholly unrealistic, in my judgment, to expect farm returns to continue at the levels that have existed during most of the past inflationary decade," he said.

"From 1942 to 1952 farm prices averaged 107 per cent of parity. Partly is that price for farm products that will give them the same purchasing power as they had during the base period, usually 1910-14. We are in danger of worshipping at the shrine of parity to too great a degree. In the 43-year period, from 1910 to 1952, farm prices averaged 95 per cent of parity. If we omit the two world war periods, World War I and World War II, farm prices averaged 90 per cent of parity. Leaving out the great depression and the four periods the average is about 93 per cent of parity. It is my judgment that somewhere between 85 and 95 per cent of parity is a more normal relationship between prices received and prices paid by farmers than the so-called 100 per cent of parity."

Now this has nothing to do with what is fair or what the farmers ought to receive. I simply think this is a more realistic appraisal of what may exist. Unfortunately, I am not one who has a lot of faith in the government's ability to keep prices too far out of the line from where they might otherwise be under a more free economic condition. The efficient, well-organized farm that has not gone into debt too heavily at high prices will be able to operate at an average of 90 per cent of parity."

"Agriculture has changed a great deal since pre-World War II," he said. "Farm output has increased around 40 per cent. Total man hours used in agriculture have decreased 17 per cent. The use of farm machinery has increased 75 per cent. The use of

HOLSTEIN SHOW SET FOR PONTIAC ON JULY 29

The Annual Black and White Holstein Show will be held on Wednesday, July 29, at the 4-H Fair Grounds, Perry and Walton Boulevard, Pontiac, starting at 10:00 a.m. All farmers with registered Holstein herds are urged to participate in this show. One or two cattle from your herd would be appreciated.

This show is not only for Holstein breeders, but all dairymen in the county are urged to attend and take part in the judging contests. 4-H Club members with Holstein dairy calf projects are invited to exhibit and compete for prizes.

Those planning to participate in the show should take care of getting their cattle blood tested now. The following requirements must be met regarding tests for Bang's disease:

1. All cattle over 12 months of age must be blood tested, unless they were vaccinated within the last year when they were between four and six months of age.
2. Vaccinated cattle must be accompanied by an official vaccination record.
3. This means that all animals over 21 months of age, whether vaccinated or not, must be blood tested.

Adolph Engler of Lake Orion and Don Hickmott of Oxford, officers of the local Holstein Association, urge all dairymen in the county and anyone else interested to attend this show.

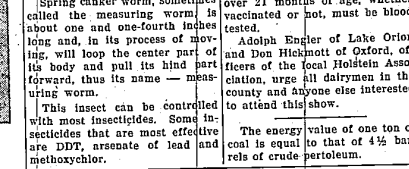
The energy value of one ton of coal is equal to that of 4 1/2 barrels of crude petroleum.

Use Of Insecticides Effective Against Worms

Just about everybody that has an ornamental tree or shrubbery has spring canker worms. This year the worms, if they are enough numbers, will defoliate a tree. There are trees in Oakland County to which this has happened.

Spring canker worm, sometimes called the measuring worm, is about one and one-fourth inches long and, in its process of moving, will loop the center part of its body and pull its hind part forward, thus its name — measuring worm.

This insect can be controlled with most insecticides. Some insecticides that are most effective are DDT, arsenate of lead and methoxychlor.



OUR 4-POINT PROGRAM is
To Give HIGHEST QUALITY
To Have AMPLE STOCKS OF MERCHANDISE at all times.
To Give QUICK SERVICE at the LOWEST POSSIBLE PRICES

• Special •
DELIGHT EGG MASH in prints at \$4.80 per cwt.
DELIGHT STARTER in prints at \$5.15 per cwt.

We Carry Full Line of POULTRY — DAIRY — RABBIT and DOG FEEDS — GRAIN — SEEDS — FERTILIZERS — POULTRY EQUIPMENT — STOCK MEDICINES and TONICS — BERRY BOXES — Hay and STRAW

MILLERS OF FLOUR AND FEED FOR OVER 50 YEARS
FARMINGTON MILLS
ESTABLISHED 1895
33408 STATE ST. Farmington, Michigan
P. F. GILDMESTER, OWNER
FARMINGTON PHONE 0076

Michigan Ranks Fourth In Number Of Tree Farms

Michigan, ranking fourth in the nation in the number of certified tree farms, added six more recently and raised the total to 315 now dedicated.

At present, about 670,000 acres of Michigan forest lands are listed under the program, started in 1948.



Looking for Something?



FOR HOME OR BUSINESS NEEDS
LOOK IN THE
'YELLOW PAGES'
OF YOUR TELEPHONE DIRECTORY

Park Visitor Totals Decline In Michigan This Year

About 1,600,000 persons have visited Michigan state parks so far this year, a decline from the two million that had entered the parks to this date last year, the conservation department reports.

Camp permits have also slumped slightly; 1,360 have been issued to date while 1,550 had been issued in June 1 last year.

Grand Haven, Holland, Bay City and Dodge Four are again the leading parks with a combined total of about 575,000 visitors to date. Rochester — Ulia is leading the recreation areas with a total of 113,000 visitors.

Enterprise Classifieds Are Widely Read — Many Prospective Buyers

you'll say **Wow** when you see our **A-1** USED CARS and USED TRUCKS

BERLING-McHUGH, Inc.
FORD SALES AND SERVICE
30711 Grand River Ave. Phone 2690 - 1 - 2
OUR REPUTATION RIDES WITH EVERY USED CAR AND TRUCK WE SELL!

DUSTY ROADS?

They're No Problem

USE
CALCIUM CHLORIDE
100 lbs. \$2.25
25 lbs. . . 90¢

FARMINGTON LUMBER & COAL CO.
32800 Grand River in NOVI Phone 0020
43755 Grand River Phone Northville 308

MORLEY BROTHERS and CALCINATOR
Congratulate
RICHARDSON APPLIANCE & HEATING
on their GRAND OPENING, June 19 & 20

Like Magic Garbage Disappears!

CALCINATOR

Presto-Chango! — And just that fast your garbage problem is gone when you install the amazing Calcinator automatic disposal unit.

Think of it, all your garbage, bones and burnable trash disposed of quickly and safely right in your home — automatically without odor, noise or smoke. Just wrap it—Drop it—Forget it—and that's all.

Easily installed in kitchen, basement, utility room or garage.

RICHARDSON APPLIANCE & HEATING
32623 GRAND RIVER AVE.
NEAR MAPLE AVE.
Farmington, Michigan

WRAP IT
DROP IT
FORGET IT