



Is it too late to put in a lawn? Should rye grass be added now as a temporary lawn, and then plowed up in fall so a new lawn can be started?

My answer to both questions is no: True, late August and September are best times for seeding a new lawn but they can be put in any time, if you can sprinkle.

Although seed beds are often prepared well, good seed is used, poor germination or dying of the young grass is experienced, mainly because of improper mulching or watering.

We never thought much of the idea of sowing a temporary lawn of ryegrass, plowing it up later, then putting in permanent grasses. It's a lot of work and expensive business. Why not put a permanent lawn at the start?

NOTE: We have new and modern ryegrasses which can be used in conjunction with Kentucky bluegrass. Some of these new ryegrasses are so good you have a hard time telling them from the bluegrass. Make sure you get the new types, not the old-fashioned ryegrass.

If you put in a lawn now, add a mulch to the seeding to protect the seed from washing, to hold moisture and insure germination. Straw is one of the most popular and best mulches. It should be applied three to four straws deep (not inches, but straws) so some of the soil is barely showing through.

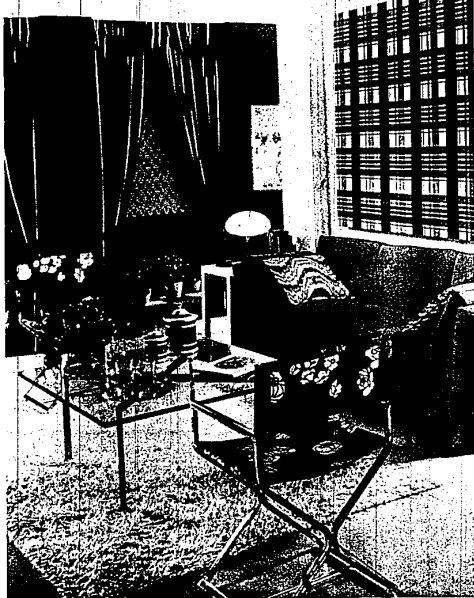
Other organic materials such as pine needles, wood chips, sphagnum moss, or hay may be used if readily available.

Soaked peat moss may be beneficial, but must be wetted thoroughly before applying, and kept moist at all times. Once peat moss has dried, it will shed water and prevent uniform soaking.

Straw and hay should be wetted and aged before use to make sure weed seeds have germinated before they are put on the lawn.

GREEN THUMB BONUS: Send me a self-addressed, stamped envelope and ask for a copy of our free bulletin, "Turf Tips." It's packed full of good tips on maintaining a good lawn.

POINSETTIA: If you haven't cut your poinsettia back, better do so now. Cut it back to within four inches from the top of the pot. Root the tips (four-inch cuttings) in plain tap water or perlite, and start new plants for your friends.



FLAG BRIGHT LIVING ROOM has a potpourri of patterns. The result is a contemporary collaboration of contrasts. Lacquer, chrome and glass carry out the fabric's modern mood and cool the scene.

Pests Vs Pesticides

Homeowners read, see, and hear a lot today about the problems of pests versus pesticides.

What do these terms mean? Simply defined, pests are bugs, weeds, fungus diseases, rodents or other elements within our daily lives that create danger, damage, or disease for man.

Pesticides are those products developed by man to combat these common enemies.

Pesticides include chemical formulations, such as insecticides, fungicides, weed-killers and other more specialized, lesser known materials.

Most homeowners know pesticides are used extensively in agriculture to protect crops and domestic animals, but few realize the importance of these materials around the average home.

For example, many homes have landscaped surroundings which add to the value of the property. These include such items as the lawn, shrubs, flowers, trees, container plants, and a blend of wood, rock, or gravel patterns.

Frequently, the landscaping is a major investment as well as a source of beauty and pleasure for the residents.

But for pests, it's a different ballgame. Entomologists estimate

that more than 80 per cent of all animal life is insect population. Biting, piercing, sucking, stinging, and segmented, the world is full of them, one scientist says.

Official tabulations show more than one million different species of insect life, with the list growing longer each year.

And while there are about three billion people on this planet, entomologists figure there are nearly that same number of bugs for every square mile of earth.

Even more staggering, the U.S. Department of Agriculture estimates the economic loss, by all pests, to this country each year at approximately \$4 billion.

And these pests can be equally damaging around the house.

Just one species of insect, given freedom to operate and a few weeks' time, can destroy a lawn, flowering shrubs, bushes, and even trees, not to mention the omnipresent threat of termites to the house itself.

Pesticides that were invented to aid man in the fight against disease-spreading, damage-causing insects and rodents eventually were developed into today's modern garden products.

For example, the label on one common garden insecticide lists 35 different insects — any one species could cause extensive damage so that the chemical spray controls.

This and many other pesti-

cide products are now part of almost every homeowner's garden supply store.

Yet, because of widespread misrepresentation of facts, a continuing barrage of "scare" articles and news-features, there is a growing threat that pesticides will be so heavily legislated against as to virtually eliminate them, regardless of the consequences to U.S. agriculture or around the house.

If you are unsure about the proper use of pesticides, check with your garden center.

They will be able to help you reach sensible conclusions regarding lawn and garden pests.

Garden Chatter

Okra is an unusual vegetable that's very popular in the south. Yet, it will grow reliably as far north as New York State.

A member of the hibiscus family of plants, it produces beautiful white flowers with dark brown centers. The okra pods form under these exotic flowers and should be picked when young and tender.

They are delicious cooked as a side-dish or added to soups with a tomato base. Older pods can be left on

the stalk to become hard and brittle by fall, when they can be picked to make interesting outdoor arrangements.

It is often claimed that blue among flowers is the least common color because it is the color of the sky against which most flowers must contrast in order to attract insects for pollination.

Blue flowers are mostly low growing (forget-me-nots, ageratum and pansies) in order to contrast with foliage. In actual fact, however, green flowers are much less

common than blue flowers and black flowers are almost non-existent — although some nones are almost black.

Among the most widely grown green flowers are Bells of Ireland and Envy Zinnia. The seeds of both these varieties are available from most seed displays and catalogs, and they are easy to handle, requiring similar conditions for successful results.

Sow them directly into the garden where you want them to bloom later the last frost date.

BOLENS
FMC CORPORATION

New Riding Mower
...works harder, handles easier!

Model 728 7-70
ENGINE 4-1/2 HP
AGRICULTURAL TYPE
SPAREWHEELS

Now gently, one power plus new convenience and safety features. A compact 7 hp perfect riding mower, 18" cutting and sweeping, 50 mph in rear wheel drive, 40 mph in front wheel drive. Key lock ignition, interlock switches to start and brake, 4 forward speeds, 1 reverse. Automatic-type steering wheel for fast, sure control.

\$489

BRACKET FORD TRACTORS & EQUIPMENT
34600 W. 8 MILE, FARMINGTON
476-3500
MON-FRI 8 a.m. - 5:30 p.m.
SAT. 8 a.m. - 12:00 p.m.

If you can't bank money, you can still **SAVE CASH** the Miles way.

• STEP-BY-STEP INSTRUCTIONS • FREE DELIVERY
• 12 MONTHS FINANCING • 10% DISCOUNT

Bank money on the Miles way. The Miles way is a new, exciting, and profitable way to bank your money. It's the Miles way to save cash. It's the Miles way to get more for your money. It's the Miles way to live better. It's the Miles way to live smarter. It's the Miles way to live richer. It's the Miles way to live happier. It's the Miles way to live longer. It's the Miles way to live healthier. It's the Miles way to live more. It's the Miles way to live better. It's the Miles way to live smarter. It's the Miles way to live richer. It's the Miles way to live happier. It's the Miles way to live longer. It's the Miles way to live healthier. It's the Miles way to live more.

secure MILES HOMES

1208 West 4th Street, Farmington, CT 06030
Phone: 476-3500
Handyman, do-it-yourselfers, the Miles way.

REMEMBER MOTHER ON **MOTHER'S DAY, MAY 13th**
Give her a beautiful gift of **Roses or Azaleas** to last a Lifetime.

Wayne Jones

ROSES
MANY VARIETIES **\$2.95**
PATENTED VARIETIES SLIGHTLY HIGHER

Choose from your favorite!
ALL COLORS
HYBRID TEAS, FLORIBUNDAS, GRANDIFLORAS, CLIMBERS

AZALEAS **\$4.50**
5 COLORS IN BLOOM
Red, Pink, White, Lavender, Purple and \$7.95 Potted

FREE PLANNING AND DESIGN SERVICE FOR OUR CUSTOMERS

Plymouth Nursery
9900 ANN ARBOR ROAD (M-14, 1/2 Mile W. of Sheldon Road)
PLYMOUTH
Call 453-5500

HOURS: Daily 9 a.m. - 6 p.m.
Sunday 10 a.m. - 6 p.m.

Harold Thomas NURSERY
GA 1-2888 14925 Middlebelt
between 5 Mile & Schoolcraft

ON NUTRO WEED & FEED
Reg. \$14.95
SALE PRICE \$13.95

ON NUTRO WEED & FEED
Reg. \$19.95
SALE PRICE \$17.95

KILL INSECTS & FEED GRASS!

- Nutro Kontrol Turf Food
- High-nitrogen formula helps grass green-up fast!
- Kills lawn of harmful insects!
- Feeds and treats your lawn for less than 3¢ a square foot!
- 5,000 sq. ft. coverage
- \$7.95

Nutro KONTROL TURF FOOD
BORDEN

Kill weeds while you feed grass!

Nutro WEED & FEED

1 Coat leaves... Weed killer sticks to leaves and penetrates to the root.

2 Penetrates roots... Killing action begins against weeds.

3 Shrivels tops... Roots die and leaves wither.

4 Weeds fade away... Turf food nourishes grass, grows back where weeds were.

Save yourself some work! Pick up Nutro Weed & Feed this weekend.

Lottery bonus one week only!

Four new cars in addition to regular Lottery prizes!

To celebrate Michigan Week, The World's Richest Lottery is offering a **Michigan Week Bonus** for tickets sold May 8 to May 15! Awarding a new 1973 Ambassador station wagon, Mercury Marquis, Plymouth Fury III and Oldsmobile Delta 88! Each has an approximate retail value of \$5,000 and each is equipped with automatic transmission, radio, white wall tires, power steering and power brakes.

Tickets for the May 17, 1973 weekly Lottery drawing (only) qualify for both the regular weekly drawing and the Bonus Drawing.

Immediately following the regular weekly drawing of May 17, two additional bonus numbers will be drawn. Only tickets matching both bonus numbers qualify for the Bonus Drawing.

Bonus Drawing May 24 at Alma, Michigan. Matching one bonus number does not qualify the holder for a \$25 prize.

- There will be as many additional prizes of \$500 each as there are additional qualifying contestants.
- Important: Holders of winning bonus tickets must claim their ticket at a designated Lottery Claims Center by 4 p.m., May 23. To be invited to the new-car drawing. Tickets claimed after that time win \$500.
- Winners of automobiles will be directed to deal with a specified dealership for delivery. Sales taxes, license, title transfer and optional equipment not listed above are the responsibility of the winner.

The chance of a lifetime.

Bonus Week tickets on sale May 8 through noon May 15 only. Buy them now!

MICHIGAN LOTTERY
0-8000-0000 00/02/00 000/000