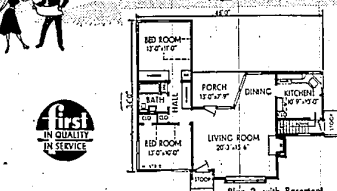


"I'd Like To Be Your Mover"

Since 1924
IMLACH MOVERS
 LONG DISTANCE MOVING — PACKING — STORAGE
 SERVICE ANYWHERE IN THE U.S.A.
 NEW YORK FLORIDA TEXAS
 • Free Estimates •
 Office: 1155 FORT STREET, Lincoln Park, Mich. WArvich 8-0000
 Office: 28200 GRAND RIVER, Farmington, Mich. Phone Farm. 3140



PLAN TO BUILD A CUSTOM BUILT HOME
 — With Quality Materials

There is nothing to equal the thrill of a new home built especially to fit the needs of you and your family. Here's a fine example of the two bedroom plan. It can be yours. See us now!

SEE OUR NEW PLAN BOOKS
 No matter what your needs may be in a home, we have plan books to satisfy them. No charge... no obligation.

FARMINGTON LUMBER & COAL CO.

32800 Grand River in NOVI Phone 0020
 43755 Grand River Phone Northville 308

FARM NEWS

CULL PULLETS WHEN TAKEN OFF RANGE, EXPERTS ADVISE

An excellent time to cull pullets in a flock is when they are being moved from the range to the laying house. Keep only those pullets that have good laying qualities. It doesn't pay to feed hens that won't lay.

In choosing future layers, keep in mind these points: Head type, eye, body size and conformation, general health, uniformity, early maturity and, if hatching eggs are to be produced, breed disqualifications.

Birds selected for the laying flock should display neither a crew-type nor beefy head. Pullets with clear-cut, rugged, alert heads that are fine in quality are likely to be the best layers.

Pullets just coming into production will exhibit a full, red, waxy comb and wattles. The face may tend to have a fat appearance which will disappear as the bird lays more. A prominent, keen sparkling eye is judged to indicate good physical condition.

John Clappison Sells Insurance



IS YOUR CHILD A TERROR?

Children who seem unmanageable, inattentive, or stupid may be suffering from physical defects or deficiencies that can be remedied by professional care. Before school begins, have your doctor check your child's health. If he decides medications are necessary, remember we are ready to fill his prescriptions promptly, accurately, with finest pharmaceuticals.

YOUR PHARMACIST

BRADLEY Rexall DRUGS

REXALL FOR RELIABILITY

33323 GRAND RIVER AVE.

Cookie's Coming To State Fair, Too



This picture is intended as a reminder for Michigan farmers that Friday, August 20 is the deadline for entries in this year's Michigan State Fair, September 3 through 12.

It shows two proud members of the East-Orion 4-H Club with their Ayreshires, Walter and Catherine, 14 (left) holding Sky Light Cookie whose mother, Sky Light Betty Ann, held by Claude Clawson, 14, has been doing mighty well in various shows. She was first at the Oakland State Fair, second at the 1953 State Fair, and third at the Lansing 4-H show.

Cookie, the calf, will see her first competition in this year's State Fair and, naturally, she hopes to eventually do as well as her mother, who also is entered again.

HAY MUCH BETTER THAN GRASS FOR EVES, EXPERT SAY

Don't feed your ewes grass silage unless you have to — when you're short of other roughages. That's the word from L. H. Blakeslee of the annual husbandry symposium at Michigan State College.

Even though grass silage can be worked into the feeding program for bred ewes, they prefer good hay and do better on it. Blakeslee, together with researchers H. A. Henneman and R. H. Nelson, have answers to some other questions about grass silage.

Can ewes be fed hay-crop silage during the gestation period and still drop strong lambs? Grain is advisable during the last 6 weeks of pregnancy — but silage can provide the time.

Will ewes produce enough milk for their lambs if fed only high quality hay-crop silage? Not always, hay gives better results — but lactating ewes should be fed grain if not on pasture.

The researchers also found that greater ewe and lamb gains result when hay-crop silage is fed with corn silage or good quality dry roughages than when fed alone.

Hay-crop silage needs more grain supplementing before and after lambing than other roughages do, adds Blakeslee. Ewes fed on large quantities of silage need more bedding than those fed in hay.

It takes just 12 days of corn silage feeding to bring cows to a peak in milk production after they are "worn down" on a straight hay diet, report MSC dairy researchers.

Wheat growers can't slight the use of fertilizer on their 1955 crop if they expect to maintain profits with acreage allotments, say MSC crop specialists.

Unwise To Wean Baby Pigs Early

"Taking the baby pig away from his mother at five to seven days — and feeding him on a "pre-starter" ration is not practical for the average hog raiser.

That is the contention of Harry Moxley, extension animal husbandman at Michigan State College.

Moxley admits that the recently developed feed that takes the place of sow's milk at five to seven days is "fine for some hogmen." And, he adds, "the ration is a big help when a sow farrows too many pigs for her milk supply.

But, he asserts, the ration will have to be manufactured much cheaper than it can be now in order to make it practical for the average hog raiser. Don't forget, he reminds, that the sow's milk is almost no cost compared to any starter ration — even if the price is reduced considerably.

A pre-starter ration recently developed by Iowa State College contains dry skim milk, sugar, soybean oil meal, hard, toasted corn flakes, antibiotics, vitamins and trace minerals.

Safety Education On Farm Pays Off

Michigan State College's farm safety specialist thinks farm safety education is paying off.

David G. Steinicke points to the reduction of ten deaths between 1953 and 1952 — 75 as compared with 85. Those are figures just released from the Michigan Department of Health.

The Michigan Rural Safety Council, in cooperation with other farm groups, has been conducting safety education programs for many years.

Last year, as usual, tractors were the most deadly instruments on Michigan farms. Of the 23 deaths caused by farm machinery, 17 were from tractor accidents. Two of these deaths came to boys four and six years old. Other fatalities resulted in accidents with corn pickers, ditch diggers, silage choppers and manure loaders.

Other causes of deaths were falls, 14; firearms, 9; falling objects, 3; electricity, fires and animals, 4.

The Grist Mill

By BD ALCHIN
 County Agricultural Agent

Farmers in Oakland County are urged to participate in the election of community committeemen August 12 to 20.

To date, the township nominating committee has selected the candidates for each of the areas in the county. On or before August 12 eligible farmers will receive ballots from the A.S.C. office, Walter Cook, manager. The ballots will contain the names of the candidates for the community in which the eligible voter resides.

He should select five of those candidates as his choice for the three community committeemen and two alternates necessary to carry on A. S. C. programs in his area. All it takes is a couple of minutes of time to mark the ballots and put them in the mail box.

This is not too much to ask for the privilege of being an American.

When harvest is well under way on Oakland County farms, it is fact, by the end of July about 50% of the wheat was in the bin on farms in the county and some farmers had started on the oat crop. Yields of both wheat and oats were reported to be above average by the farmers we have talked to so far. Most farmers further report spring seeding of alfalfa are coming along nicely in spite of recent dry weather.

FARM CALENDAR OF EVENTS

August 13 - 17, American Poultry Association annual conference at Michigan State College.

August 20, Future Farmers' Swine Sale, St. Johns.

August 21, State Plowing Matches, Conservation Field Day, Constantine.

Enterprise Classified Ads Bring Quick Results

From where I sit... by Joe Marsh

"Nothing to Sneeze At"

From where I sit, I can sympathize with Hap. It's no joke. But as Hap admitted later, he was dead wrong in seeing at the idea of hay fever. Being light of other people's ideas and opinions is a familiar trouble with a lot of folks. Whether it's hay fever, football or a choice of say, buttermilk or beer as a "first-queener," I'm just naturally "allergic" to anybody who "knows-it-all!"

Joe Marsh

Copyright, 1954, United States Brewers Foundation

for HEALTHIER FASTER-GROWING STOCK

"On-the-grow Stock and Poultry need a balanced diet!"

See Us for Anything in the Line of FLOUR — FEEDS — SEEDS

FERTILIZERS — STOCK and POULTRY REMEDIES INSECTICIDES — SALT

EGG CARTONS FRY-PACKS

We Try to Carry a Complete Line of the Above Items at All Times for Your Immediate Use.

MILLERS OF FLOUR AND FEED FOR OVER 50 YEARS

FARMINGTON MILLS

ESTABLISHED 1895
 33408 STATE ST. DELIGHT
 F. GILBERTSON, OWNER
 FARMINGTON, MICHIGAN PHONE 6006

My recipe for SEVEN-YOLK CHERRY CAKE ...

always successful in my **ELECTRIC RANGE**



SEVEN-YOLK CHERRY CAKE
 Time: 1 1/2 hours

Temp: 325° F.

1 cup shortening
 1 cup white sugar
 1 cup granulated sugar
 1 cup evaporated milk
 1 cup whole milk
 1 cup vanilla extract
 1 cup cherry pie filling
 1 cup flour
 1 cup baking powder
 1 cup salt

Cream shortening until soft. Add together flour, baking powder, sugar and salt. Add to mixture. Add milk, vanilla extract and cream. Add remaining milk with electric mixer. Add flour in 10-minute intervals. Add cherry pie filling. Bake in 10-inch greased cake pan. Cool cake 10 minutes before removing from pan.

EVAPORATED MILK FROSTING

1 cup evaporated milk
 1 cup granulated sugar
 1 cup whole milk
 1 cup vanilla extract
 1 cup cherry pie filling

Frosting and coloring as desired. Bring evaporated milk to a slight boil; add thoroughly creamed sugar. Beat until light and fluffy. Beat until light and airy. Add remaining milk, vanilla extract and cherry pie filling. Beat until thick and creamy. Frosting will be similar to whipped cream.

Ask for other interesting recipes at your Edison office.

SEE YOUR DEALER or Detroit Edison

BE MODERN — COOK ELECTRICALLY

HELP Farmington GROW

Keep Your Business at HOME ... in Farmington

WE WILL GIVE YOU AS MUCH FOR YOUR CAR AS YOU CAN GET OUTSIDE OF TOWN

If you are READY to Buy a Car ... Get the Best Bonafide Deal you can and We Will Meet the Offer.

• Quality Service On All Makes Of Cars •

Stop in Today for a FREE ESTIMATE

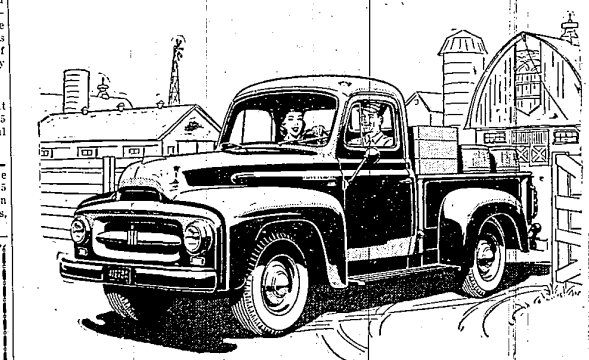
We Have a NEW BUILDING and Improved Equipment with which to Serve You Better.

Put your BUICK in BUICK hands

ANY DAY ANY SEASON OF THE YEAR.

JIM BURNS BUICK, Inc.

32411 Grand River Farm. 1411



Drive America's Big Value Pickup Buy!
New INTERNATIONAL ONE HUNDRED!

Here's the pickup truck news of the year — the pickup that gives you everything for rugged truck work, plus a whole new idea of pickup truck performance! All-new high-compression engine — brand new finger-tipping transmission with overdrive optional. Plus famous insulated Comfo-Vision cab — easiest steering ever — biggest effective brake area in the lowest-priced field! Priced to save you money. Built to work for years at lowest cost. Come in and take a demonstration drive. We'll let the ONE HUNDRED speak for itself!

Your trade-in may cover the down payment. Ask about our convenient terms.

CURT HALL

33224 GRAND RIVER PHONE 2680

INTERNATIONAL TRUCKS
 Standard of the Highway