

A Classified Ad Will Sell Those White Elephants!

From where I sit... by Joe Marsh

A Winner Every Time!

Last Friday at our big basketball game with Centerville I sat next to a fine-looking old man. Centerville had things their way the first half — and he cheered every score they made.

But our boys began to catch up. Then Stretch Brown put us in the lead with a long set shot — and noticed that the old fellow was now rooting for our side. "What team are you for, anyway?" I demanded.

"Neither," he replied. "I've got my own team. I figure any kid that does a good job out there is on my team. Root for the individual like I do — and you'll always back a winner!"

From where I sit, maybe it is a good idea to keep our eye on the individual, instead of automatically grouping him on teams. You're "for" or "against." We're all individuals at heart, with our likes and dislikes — our right to prefer tea to coffee or beer to buttermilk...our right to "blow the whistle" when anyone tries to regiment us.

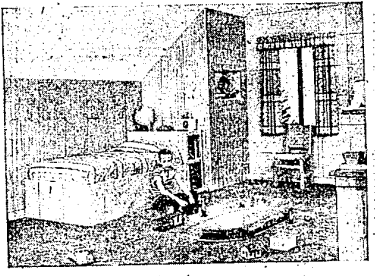
Joe Marsh

Copyright, 1955, United States Brewers Foundation

Homes and Gardening



'Forgotten' Attic Space Can Be Made Into Cozy, All-Purpose Room



This is the use of expandable homes. Thousands of today's homes are built with room for expansion to meet changing family needs. The attic is often the spot where this extra space is found. How to convert this attic into livable, usable space is limited only by the imagination of the owner.

Picture a typical one-and-a-half story house with expansion attic. Think of the opportunities in turning this unused space into a special purpose room. Make it a room for the children with space for sleeping, playing and study. Or make it into a sewing room for Mom, a guest room for visitors, or even an apartment for extra income.

Normally in converting unused space, interior walls must be completed and then painted. A boon, however, to the home handyman is pre-finished wall paneling. This type of paneling is offered in both block and plank, with only regular carpenter tools needed for the job. A unique tongue and groove joint makes installation easy and eliminates the need for joint covering.

Estimated decorating schemes are possible by combining companion colors in the scheme or by using both plank and block in the design. The planks and blocks are made by fusing a self-protect finish to a strong tempered hard-

Warmth Of Wood Chases 'Lab' Look Out Of Kitchen

For has come back to America's kitchens, replacing the cold, white laboratory-like kitchens of pre-war years. The trend is to kitchens that combine modern scientific appliances with the warm "homey" atmosphere of old-fashioned kitchens.

The trend is due to the housewife's growing realization that the kitchen should be as warm and inviting as any other room in the house. It is where she spends much of her working day, and where she often feeds her family and entertains guests. The result is that today the kitchen is being decorated, instead of "whitewashed."

Kitchen walls are being painted or papered in attractive colors of pattern. The colors often "bleed" with the decorative scheme of the other rooms. This is especially effective in an open floor plan, where the kitchen is separated from the dining and living area by a row of counter-height cabinets instead of a wall.

Wood cabinets are part of the decorating trend. They can be given a natural finish or stained, bringing out the warmth and grain of the ponderosa pine wood, or they can be painted to harmonize with other colors in the kitchen.

Wood cabinets have the advantage of being easy to refinish when the time comes to redecorate the kitchen. Their color can be changed as often and as readily as that of the kitchen walls.

EXTRA LIGHTS EASY TO INSTALL FOR HOME HANDYMAN

Most home handy men can hook up extra lights in a garage or basement work area if an electric circuit has already been installed close by.

No one likes 110 volts ("tingling") up his arm, so turn off the electricity first. Then install a new fixture box, and run a cable from the closest light fixture to the new box.

Make certain the wires are hooked up in a series. That is, connect the white wires to the white wires and the black wires to the black wires. Also, attach the black wires to the gold screws in the fixtures.

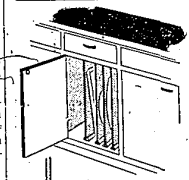
The bare wire ends may be soldered or twisted together and taped. Or, if preferred, screw-on solderless connectors may be used.

Asphalt Shingles Offer Varied Roof Designs

For the home-owner who wants to achieve a distinctive appearance for his house, design is an important factor in choosing from the several types of asphalt roof shingles.

Both individual and strip asphalt shingles are available with square butts, which give an attractive design of straight, orderly rows. Shingles also are made in hexagonal and other interesting designs. All asphalt shingles are made in a full range of solid and blended colors.

How-To-Ideas by Dick Carpenter



Hardboard Kitch-Cabinet Dividers For Storing Trays and Pan Lids

Where to store large trays, platters and pan lids is a problem neatly solved by just a few square feet of 1/2-in. hardboard. Just cut several pieces of tempered hardboard to fit vertically inside a kitchen base cabinet and install them to form dividers. They can be held in place with strips of small quarter-round molding nailed to the top and bottom of the cabinet. Install the molding first to form grooves for the edges of the hardboard panels and then slide the panels into the grooves. This not only makes installation of the dividers easy but also simplifies cleaning, as the panels are removed merely by pulling them from their grooves and wiping them with a damp cloth.



FIRE — LIFE — AUTO
30760 Grand River Phone 2210
(Near 9 Mile)

ACCIDENT PROBLEMS? SEE US FOR THE ANSWERS!

Drive it in or tow it in... but, see us for estimates before you go ahead with repairs!

• Quality Service On All Makes Of Cars •
Stop in Today for a FREE ESTIMATE
We have a NEW BUILDING and Improved Equipment with which to Serve You Better.

Put your BUICK in BUICK hands

ANY DAY ANY SEASON OF THE YEAR.

JIM BURNS BUICK, Inc.
32411 Grand River Farm 1411

FEED the BIRDS
During the Cold Winter Weather They Can't Get Worms

★ ★

We Have RYDES WILD BIRD SEED

It contains Sunflower Seed — Milo Maize — Wheat — Peasant Hearts — Canary Seed — Rice and Hulled Oats

5 lb. Sack . . . 95c
50 lb. Sack . . . \$5.50

Special Wild Bird Feeders . . . \$2.75 each

It Stores Feed and Attracts Cardinals and Blue-Jays to Your Yard

MILLERS OF FLOUR AND FEED FOR OVER 50 YEARS

FARMINGTON MILLS

ESTABLISHED 1895 L.P. GILDEMEISTER, OWNER
33408 STATE ST. FARMINGTON, MINN. PHONE 6086

FARMINGTON MILLS

ESTABLISHED 1895 L.P. GILDEMEISTER, OWNER
33408 STATE ST. FARMINGTON, MINN. PHONE 6086

It's Easy to modernize

THE FARMINGTON LUMBER CO. WAY

Modernizing becomes a real pleasure and genuine satisfaction when you do it the FARMINGTON LUMBER COMPANY way. Our long experience in this work can be of real value to you in planning and carrying out the work.

ATTIC ROOM **DEN**

MODERN BATHROOM **BASEMENT ROOM**

MODERN KITCHEN **ADD-A-ROOM**

WE CAN HELP YOU

Our home planning department can assist you in planning the floor, advising on proper materials, financing, and securing a good contractor. We can save you money, too.

We handle everything to modernize your home.

FINEST QUALITY — LOWEST PRICES

LUMBER	PLYWOOD	WINDOWS
INSULATION	CEILING TILE	DOORS
PANELING	ROOFING	CEMENT
FLOORING	GUTTERING	CONCRETE BLOCK

FARMINGTON LUMBER & COAL CO.

NO MONEY-DOWN 3 YEARS TO PAY

32800 Grand River in NOVI Phone 0020
43755 Grand River. Phone Northville 308

QUALITY IN SERVICE

Beautify Table Top With Panel

Coffee tables and other flat surfaces are given a luxurious look and greater usefulness when topped with prefinished paneling which resists heat, moisture and alcohol.

The paneling can be cut with a hand saw to the size desired and, in many cases, laid in place and the job is completed. It can be permanently fastened by applying adhesive to the back of the panel.

If desired, the top can be framed with strips of wood, nailed or glued to the edges of the top, to flush with the new surfaces. At the cost of little time and money, a new table can be obtained which will be a conversation piece for years to come.

NEW TUFTING BIG INNOVATION IN FLOOR COVERING

The biggest innovations in floor coverings is the unveiling of new tufted developments. The utilization of heretofore untapped fibers for tufted goods is one of the most significant of these innovations, according to the findings of *Textiling Daily*. All-nylon synthetic fibers have been introduced. A tufted wool and rayon blend is the first of its kind as is an all-wool tufted carpeting.

Multilevel textures executed in newly perfected tufting processes represent an even more dramatic innovation. Some of the textures come through as random striated patterns but in a few cases the designs, such as floral scroll and a linear key, are clearly indicated.

Modern design in floor covering means many things today. Modern carpet design takes its influence from many traditions, its texture from many kinds of weaves. In contrast to the stereotyped geometries of the Twenties, today's modern floor covering encompasses a wide scope of styles and textures.

Selection in fabric is equally wide. Weaves run the gamut from novel velvet, wilton and axminster qualities, many of which are overblended in cotton with the particular design motif.

Built-In Wood Cabinets Enhance Attic Room

When finishing an "expansion" attic, make the most of limited space by using built-in cabinets and chests of drawers under the sloping roof. Floor-to-ceiling groups of cabinets make zood room-dividers.

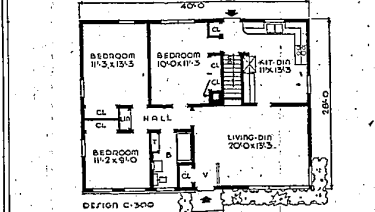
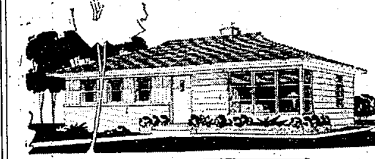
Cabinets of ponderosa pine are available knocked-down; for installation by the economy-minded do-it-yourselfer. Cabinets are also available fully assembled. A natural finish that preserves the warm pine grain of the cabinets is popular for children's rooms.

TV Set Should Fit Into Room Decor

Has sufficient thought been given to fitting the television set into the decor of the room?

Authorities state that the true function of a room should never be disturbed by the presence of a television set. In placing a TV set, both the color scheme and size of the room, as well as the height of the chairs and sofas, should be considered.

Two-thirds of American adults wear glasses.



This compact little three bedroom home with full basement incorporates all the features necessary for comfortable living. It has a floor area of 1173 square feet and features an unusual number of closets. For further information about this house plan, Design C-213, write the Small House Planning Bureau, St. Cloud, Minnesota.

Why should I buy an automatic clothes dryer?

An automatic dryer saves tons of lifting, miles of walking, cuts sprinkling time to zero and ironing time in half.

Does it cost much to operate a clothes dryer?

An all-electric clothes dryer operates for just pennies a day... saves hours of work.

Why do so many folks that own an electric range also buy an electric dryer?

Personal experience with an electric range has proved to them that the electric way is the cleanest way!

Which electric clothes dryer is the BEST?

See your dealer or stop in at Detroit Edison for comparative data and descriptive literature that will help you make a choice.