

Buy Seeds Now For Early Garden

If you are going to plant a garden this spring and summer, there is one job you can do right now, declares John Bray, Assistant Oakland County Agricultural Agent. Get your garden seed!

Go to a reputable seed store for it, he stated. That is where you will find the best selection of seed. The first garden plants you will want to get in are lettuce, peas, carrots, and beets. If you are undecided what variety to put in, Bray assures these suggestions along from Michigan State College Horticulturist Robert L. Carous.

For lettuce, forget about the iceberg type you see in stores. It is hard to ripen. Bibb is a good variety to plant. Sow it early, as soon as the frost leaves the ground, and you'll have heads by July. Bibb is the variety used for hamburgers. Salad bowl lettuce should also be one of the first plantings. It stands hot weather better than any other kind for the home gardener. Peas: Little Marvel, planted in double rows, four inches apart before April 25, will give you good, early eating. Thomas Lax-

ton, planted a few days later, are tops for freezing.

When planting beets and carrots, sow the old reliable varieties. Plant Nantes carrots in a spread row around May 1, then plant again July 1. You will then get carrots before the hot weather makes them strong tasting. Crossed by Egyptian and Detroit Dark Red are still the best beets for early greens and pickling, respectively. A newly-revised folder, "Recommended Vegetable Varieties," is available at the county extension office, 1260 West Boulevard, Pontiac.

After planting a tree, cut back the longer branches to about one-third their original length. Never trim the "leader," the topmost trunk. Support tall, "whippy" trees with guy wires.

Nobody seems to be in a hurry to look at a newspaper except those who are seeking a job, a house to rent, the price of a stock, the selections at the race track or how to get along with a man, eligible or ineligible.

AUTO INSURANCE RATES REDUCED

FOR: YOUNG MARRIED MEN CARS USED IN BUSINESS FAMILY CARS (Driven Occasionally by Boys) And MANY COMMERCIAL VEHICLES

LAVERTY INSURANCE AGENCY

FIRE — LIFE — AUTO
30760 Grand River (Near 9 Mile) Phone 2210

...now is the time for that INSIDE JOB

Do those inside remodeling, repair, and decorating jobs NOW! Wonderful materials make it easy.



PANELING
STORAGE WALLS
FLOORING
CABINETS
REPAIRS
DECORATING



KITCHEN — A modern, gleaming, work-saving kitchen is a joy to all the family. Easy terms.



ATTIC ROOM — Turn wasted attic space into a comfortable room. It answers the space problem.

DO IT YOURSELF

FARMINGTON LUMBER & COAL CO.

32800 Grand River in NOVI Phone 0020
43755 Grand River Phone Northville 308



Homes and Gardening

Light All Sides Of Bathroom Mirror

Ask any man what personal comfort he dreams of most in a new house and chances are he'll agree that it's a good spot for shaving. Today his dreams are no luxury because many builders are actually light-conditioning every side and type of bathroom. Although it's all done by laboratory-tested recipes, it's so simple and practical you'll wonder why you didn't think of it yourself.

Take three lighting fixtures big enough to do the job of course, and place them on each side of the mirror and over the wash bowl itself. There is scientific reasoning behind this arrangement. When fixtures along side the mirror are placed no more than 30 inches apart, they give ample light on both cheeks. The third fixture installed in the ceiling 12 to 15 inches from the wall lights not only the top of the head but also under the chin by reflection from the bowl. Outlets for lights beside the mirror should be located in a 24-inch outlet box and required 60 inches above the floor and 30 inches apart. When using fluorescent lamps, 20-watt (24 inches) is minimum size for good lighting. Remember, white lamps are most flattering to complexions.

Incandescent bulbs should always be shielded with opaque or semi-enameled glass. Minimum size should be one 60-watt or two 40-watt bulbs in each of the three units.

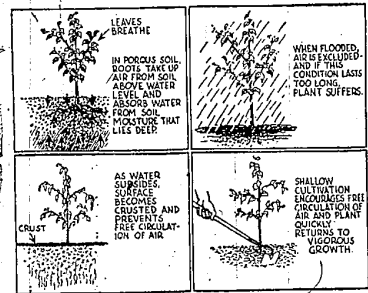
A house with a wide mirror over the wash bowl should have a shielded fluorescent ceiling fixture with two rows of tubes in a length to fill the space. Minimum wattage is two 23-inch (42-watt) lamps recessed or surface mounted on ceiling 12 inches from wall.

Plant Starter Solutions Help In Home Gardens

Want to give those house plants or those vegetables in your home garden a shot-in-the-arm? Starter solutions — concentrated fertilizers in water — may be the thing to use.

When fertilizers are in solution, they can be taken up by the plants immediately and used to grow new roots and tops. Robert L. Carous, Michigan State College horticulturist, observes that when starter solutions are used on plants a day before transplanting, more of the plants stay alive.

Carous says starter solutions are handy for gardeners who forget "how much a handful is." When using dry fertilizers, many garden enthusiasts tend to over-fertilize.



Soil In Small Areas Can Be Improved To Permit Growth Of Plants, Flowers

Few home owners have an opportunity to select sites which have good soil for a garden. But since the areas involved are comparatively small, it is usually practical to improve the soil.

The first improvement, in most cases, is to make the soil more porous or less so. Sand may be too porous, allowing all water to run through it quickly and plant food to leach away. Clay may not be porous enough, blocking the flow of excess water, excluding air, and being difficult to till.

Air is as necessary to the roots as to the leaves of plants, but it cannot penetrate soil which is flooded with water.

Attempts to improve clay soil by adding sand, or sand by adding clay, may result in a concrete-like mixture harder than the original clay. Soil conditioners which make clay porous are expensive. But lime-slime screenings, available in most localities at low cost, have a chemical effect on clay which disintegrates the fine particles into larger grains, between which water and air can pass freely.

There is little or no danger of applying too much limestone to clay soils. It breaks down slowly and the clay has a buffer capacity which prevents the calcium in limestone from making the soil alkaline, even when large quantities are used.

Limestone does not have the same effect on sand. Though often beneficial, it should be used on sand with caution to avoid making the soil alkaline.

To both clay and sand decayed organic matter such as peat moss, black peat (muck), compost, sawdust, leaves, decaying manure, and leaf mold, should be added in liberal amounts. In sand it holds moisture, and plant food for the roots to use, and in clay it also improves porosity and makes the soil easier to work. Annual additions

Gardening With Seed Costs Less, Yields Much More

Easiest and most economical method of growing annual flowers and vegetables is to sow seeds directly in the garden where the plants are to grow.

With most varieties a single packet of seeds will grow several times as many plants as even a large garden has room to mature, and the cost of the seeds is a fraction of the sum required to purchase seedling plants.

With some varieties, however, there is an advantage in setting out well developed plants as soon as the weather is safe, in order to reap a harvest days or even weeks earlier than would be obtainable from sowing direct in the garden.

These varieties should be started in a greenhouse, hot-bed, cold-frame or in a seed-box placed in a sunny window in the home. By growing your own plants you will not only save a good deal of money, but you can select the varieties you grow from a complete list without being limited to those which local plant growers may offer.

Varities which gain most from an early start under protection are the earliest where it is desired outdoors with safety until danger of frost is over; and those which take exceptionally long to germinate and develop.

Slow germinators among the flowers include petunias, 20 days; snapdragons, 20 days; salvia, 15 to 20 days; gailardias, 20 days; heliotrope, 15 days. Asters, verbena, and Dianthus germinate in 10 days or less, but mature so slowly that unless started early they flower in late summer or early fall. Panicle for spring flowering should be started in cold frames in July for bloom the following year.

A long list of annuals can be sown either in the garden, or in seed boxes. Many experienced gardeners start such seed in boxes because it enables every seedling plant to be placed in the border exactly where it is desired. There is no thinning out and no waste of excess seedlings. The seed boxes can be kept where it is convenient to water them, and the plants moved to the garden as needed to replace bulbs or perennials which have ceased to bloom.

In contrast to annual flowers, there is little or no advantage in starting vegetables in seed-boxes, except for those varieties which produce an earlier harvest, when sown several weeks before they could be planted outdoors. Among these are the tender and slow growing tomato, pepper and eggplant; the hardy cauliflower, which must mature before hot weather; and the slow growing celery, cabbage, leeks and Spanish onions, all of which do well from plants started early and set out in the garden.

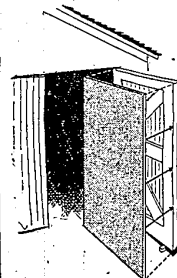
In every business someone has to make difficult and nasty decisions. He usually the president.

A project like building a stone plant and retaining wall, even a more complicated barbecue or patio isn't difficult and can make all the difference in the way your yard appears this summer.

Masonry is not the kind of work you should jump into without being fully ready, however. Some careful planning will often save the day — and the job. That's why a trip to the stone yard now is wise. You will find the dealer glad to answer your questions and help you decide the best course. He'll help with the part that's fun — the planning.

John Climpson Sells Insurance

How-To Ideas by Dick Carpenter



Bracing Sagging Garage Door Sooner or later the older-type swinging garage doors will sag and stick at the bottom, making them difficult to open and close. But there's a simple and quick repair which restores the door to its original rigidity. Measure and cut a piece of hardwood (4-in. thickness is best) to the width and length of the door, less 1 in. all around. Nail it at the top corner of the door on the side that is hinged, using only one nail so that the piece will swing into position when you're ready to nail it permanently in place. Then pry up on the outside lower corner of the door to square it. Block in place, then nail the hardwood panel to the door frame, spacing the nails about 2 in. apart.

EASTER HUNTING?

for CANDY GREETING CARDS NOVELTIES TOYS GIFTS

Choose from our wide assortment

AT YOUR **Rexall** DRUG STORE

SMITH Rexall DRUGS
GOOD HEALTH TO ALL FROM REXALL

27702 W. 8 MILE at GRAND RIVER
PHONE 1061

MORE PROFITS for YOU

COUNT YOUR BLESSINGS WITH

CERTIFIED CLINTON and KENT SEED OATS

Alfalfa Seed — Red Clover
Alsike Clover — Lidino Clover
White Clover — Sweet Clover
Timothy Seed — Blue Grass
Red Top — Perennial Rye — Brome Grass
Orchard Grass — Fescue and
Grade A Mixed Lawn Seed

MANY DIFFERENT ANALYSIS OF FERTILIZERS ARE AVAILABLE NOW FOR EARLY SEEDING

MILLERS OF FLOUR AND FEED FOR OVER 50 YEARS

FARMINGTON MILLS
ESTABLISHED 1895
33408 STATE ST. DELIGHT FARMINGTON PHONE 603

Highest Quality OF FIELD GROWN



These **ROSES** are all POTTED in Clover Set Pots, Ready to Place in Your Rose Garden

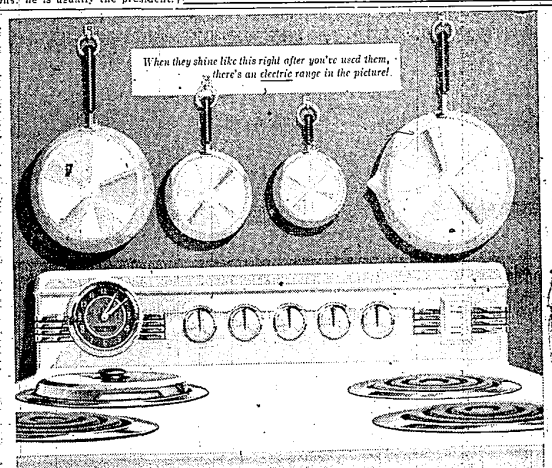
PATENTED TEAS — POLYANTHAS
FLORIBUNDAS — HYBRID

ALL AMERICAN WINNERS 1954 and 1955

Chrysler Imperial Mojave
Queen Elizabeth

STEINKOPF NURSERY

20815 Farmington Road Phone 0730



When they shine like this right after you've used them, there's an electric range in the picture.

Switch to CLEAN ELECTRIC COOKING

Tired of scrubbing and scouring blackened pots and pans after every meal? It's a thankless job. So why do it a minute longer? Become a carefree electric cook. You see, electric heat is clean as light.

Look over the many beautiful '55 models — they're as modern as tomorrow!

SEE YOUR DEALER OR DETROIT EDISON

COOK ELECTRICALLY BE MODERN