

LARGER HOMES, MORE ROOMS TREND IN NEW BUILDINGS

Houses are getting larger, says the Bureau of Labor Statistics. Two-thirds of all homes started in the first quarter of last year had three bedrooms or more, the bureau reports, and the average floor area of 1,140 square feet was five per cent larger than houses built in 1951.

Durable and popular frame construction was used in 82 per cent of the one-family houses started throughout the country, and variations by regions ran from 76 per cent in the south to 89 per cent in the northwest, the survey shows.

Of the new houses with frame construction, 38 per cent used wood siding, like the popular siding patterns of fir, hemlock and red cedar.

John Clappison Sells Insurance



ODD LOOKING as it may be, the plant displayed above by Mrs. Arthur Lamb has many qualities of beauty. Known as a Sacred Lily of India, the bloom is dark rose in color and has a heavy, waxy texture. The plant stands four and one-half feet tall and is the center of attraction among Mrs. Lamb's many plants despite its extremely unpleasant odor. Planted outside after maturing all winter as a bulb, the plant develops into a beautiful flowering tree. It is extremely unusual for a bulb to bloom with this one has, Mrs. Lamb stated.

BETTER INSULATION

Wood sheathing under exterior siding gives a home much better insulation, adds stiffness to the walls, gives good and lasting surface and when properly used will prevent sweating. Low-cost sheathing lumber is quickly and easily applied and gives added resistance to side stresses in a home. It has additional strength values when nailed diagonally.

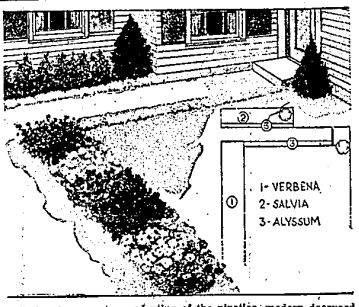
Try A Classified Ad!



BRIKRETE
BUILD UP BRIKRETE FOR
Comfort
Inter-Lakes
Brikrete
Market 4-2675
1287 S. Commerce Rd.
Walled Lake, Mich.



Homes and Gardening



Differing from wisterie planting of the nineties, modern doorway gardens emphasize beauty of the flowers, and not a pattern.

Low Growing Flowers In Door-Yard Garden Add Appeal To Modern Home

Low growing flowers which produce sheets of color can be used effectively in door-yard gardens, especially in the front yards of modern one-story homes. The simple lines and absence of ornamentation in the house design find pleasing echo in simple floral plantings which depend for their effect on color masses rather than intricate designs.

When front yard flowers were formerly in fashion, in the nineties, flowers were used to work out elaborate designs of geometric shapes. This was an ancient fashion, dating back to the middle ages, known as parterre work. The beauty of the parterre was in its pattern, with the flowers used to supply the color which developed it. Few examples of this method are now seen in this country.

Modern door-yard gardens are as simple as possible in design in order to center attention upon the beauty of the flowers. These are groups in masses of one color so arranged that each mass has a center, and sets off the color of individual flowers of low, compact growth will flower without ceasing until freezing weather and are easily grown from seed.

The garden illustrated is a simple arrangement of border plantings for a small house where the walk leads from the private driveway to the front door. Both house and lot will be made to seem larger by this arrangement. Bright red or pink salvia, and clear, vivid red, pink, blue and buff verbenas will provide a brilliant decoration for the house.

Both salvia and verbenas are slow growing, and seed should be started early in a hot-bed or greenhouse, so that the plants of good size can be set out as soon as danger of frost is over. If seed is sown directly in the garden, flowers may be delayed two or three weeks. Sweet alyssum, however, will grow quickly from seed and sowing a dwarf white variety of the dark purple Violet Queen Alyssum may be used. If the plants are sheared when they grow too tall, flowers will be increased and a low growing border constantly maintained.

Time At Hand To Set Cauliflower, Cabbage, Broccoli

Cabbages you've got your gardener's thumb fairly green by now, but cabbage, cauliflower and broccoli season is here to make it a good deal greener.

These three vegetables should be set out now about 12 to 15 inches apart in 30 inch rows. And if you want those tender plants to get a head start soon after planting, put on a cup of starter solution — one ounce of soluble fertilizer in a gallon of water — at the time of planting, advises Robert L. Carolus, Michigan State College horticulturist.

Set the plants deeper than they were growing as seedlings, but don't cover the buds. If a heavy frost is predicted during the next week, cover the plants with newspaper or cover with straw, but remove it as soon as the weather warms.

Carolus recommends these varieties: Golden Acre or Copenhagen cabbage, Super Snowball cauliflower, and Italian Green Sprouting broccoli. These are all varieties for spring planting and you can expect to harvest them during June and July. Carrots can be planted out in the garden in June or July for a second crop during the fall.

Carrots and onions are a couple other crops that should be planted now for early summer use. Sow the carrot seed about a half inch deep in wide rows. Carrots are hard to germinate and the seed must be planted near the surface and still have plenty of moisture. To keep the surface moist, swarded garden grade vermiculite or even chaffy straw can be sprinkled on the surface.

Sweet Spanish onion-plants can be purchased in bunches of 100 and will produce large, sweet onions when planted three to four inches apart in two-foot rows.



Lighting Tips for Homemakers

When building a new home, here are a few easy to remember hints on where to provide electrical convenience outlets. In living areas, lighting specialists recommend that outlets be placed along floor line of unbroken wall space so that no point is more than six feet from an outlet and in any unbroken wall space of three feet or more. Kitchen work counters should be supplied with one outlet every four feet of working space. Refrigerators will need another outlet, of course, as well as special outlets for other major appliances.

ROOM DIVIDER

A room divider which contains amazingly compact storage drawers and shelves on one side and a drop-leaf table on the other is the latest gimmick to give the apartment or home its own separate dining nook. Made of softwoods, these dividers can be designed with great flexibility to fit almost any requirement.

WOOD GUTTER

Most architects prefer wood gutter because unusual harmony and beauty of detail can be achieved. Fine homes look better in durable wood gutter because it invites natural, decorative combinations with standard exterior mouldings and finials.

Older Home May Be Best Buy Now

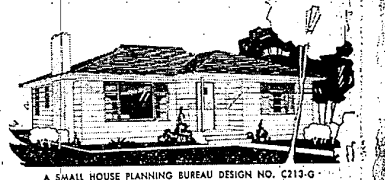
The best buy in housing this year may be a home, built ten, twenty, or even forty years ago. Modernization of these older homes is a \$12 billion annual business, equal to the money spent each year for over one million new homes.

Many budget-conscious younger couples, or extra large families, are finding real opportunities in these fine old homes, about 90 per cent of which are top quality frame construction and easy to remodel and modernize.

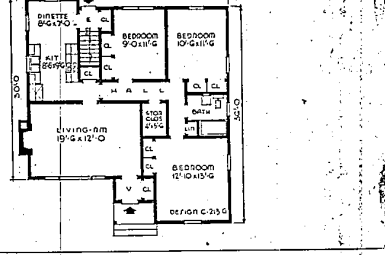
Most of them were built to last and are as good today as the day they were built. Rooms are spacious, woodwork generally is much more elaborate and decorative than in today's homes and the architectural styling generally has been followed pretty much throughout the home.

Remodelling possibilities to consider, and many of these can be done by the young husband himself if he is patient and takes his time: cover old plaster walls with fine wood panelling, like lovely fir or blonde west coast hemlock; lower ceilings to save heat and this can be done with simple fir false work dropping ceiling height.

House Plan Of The Week



A SMALL HOUSE PLANNING BUREAU DESIGN NO. C212-G



If You Really Want to Grow SWEET CORN That is Sweet

Ask About Our GOLDEN CROSS

or LINCOLN HYBRID SWEET CORN

This is the Same Kind of Sweet Corn We Have Been Selling for the Past 5 Years.

40c per lb.

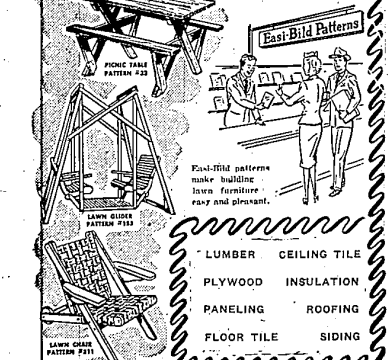
FARMINGTON MILLS
Established 1855
DELIGHT FLOUR and FEEDS
J. F. GOLDENHEIMER, Owner
324 1/2 State St. Farmington
PHONE 0920

START NOW enjoy these comforts in Spring & Summer



DO-IT-YOURSELF

You can save a lot of money by building your own lawn furniture. Start early and have it ready for those sunshiny days.



FARMINGTON LUMBER & COAL CO.
3280 Grand River in NOVI Phone 0020
4375 Grand River Phone Northville 308

MODERN LIVING

CALL FOR

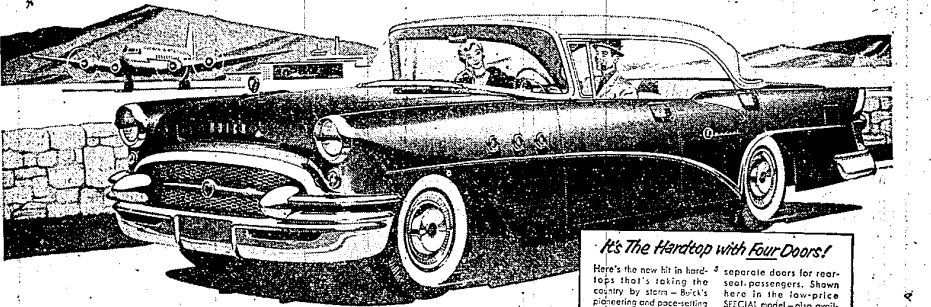
PLENTY of WATER

PLENTY of PRESSURE

Be sure your Automatic Water System's Big Enough!

Detroit Edison

You'll feel like a pilot without leaving the ground



Just wait till you switch the pitch of Buick's new Dynaflo!

How would you like to take the wheel of a high-powered Buick and feel an experience you never felt before in any earth-bound vehicle?

How would you like to do—just by pressing down the gas pedal—what a pilot does when he's ready for take-off?

And how would you like to drive with the happy thought that you're getting plenty of miles per gallon in normal cruising—and the electrifying action of the world's first airplane-principled transmission when you need it for split-second getaway response?

It's all for you when you say the word and slip into the driver's seat of a new Buick with Variable Pitch Dynaflo.*

Not only do you take command of record-high Buick V8 power—and the most envied ride in the industry—and the brawn and heft and luxury of a truly solid automobile.

You also call the turn on twenty propeller-like blades deep inside a wondrous new Dynaflo that's patterned after the principle of the modern plane's variable pitch propeller.

You hold these blades in their high-economy angle when you press the pedal in the normal way—and you get a lot more miles from a tankful of gas.

You switch the pitch of these blades to take-off position when you press the pedal way down—and you get spectacular action instantly.

Don't take our word alone that this is thrilling beyond all previous experience.

Talk to anyone who's tried it. Or, better yet, come try it yourself. That way you can learn firsthand why Buick sales are soaring to all-time best-seller highs. Drop in this week, won't you?

*Dynaflo Drive is standard on Roadmaster, optional on extra cost on other Series.

BLACKLOCK BUICK INC.
3241 GRAND RIVER AVENUE PHONE 1411 or 2012 FARMINGTON, MICHIGAN