

**PROPER FOLIAGE TRIMMING ENCOURAGES HEAVY FOLIAGE, MAXIMUM GROWTH**

The best shape for formal hedges is a wide base and narrow top. Michigan State College landscape specialists claim that most folks prune their hedges just the opposite. Or, they trim the sides straight down - which is also wrong.

Reason for the narrow top is to let sunlight reach bottom leaves of the hedge and have thick foliage from the ground up. If the sun doesn't strike them, low-leaves die out leaving bare spots.

If your hedge already has the wrong shape, Harold Davidson, MSU horticulturist, says you can correct it by letting the lower branches grow and trim it right next year.

A new fashion trend reflecting the popular decorator touch is colored drawer interiors. You'll find drawers lined with shades of red and blue.

## Homes and Gardening



**VARIETY POSSIBLE WITH READY MADE CURTAINS, DRAPES**

An almost endless variety of window treatments that are interesting in themselves while still good solutions to decorating problems are now possible with ready-made curtains and drapes.

Manufacturers are offering lines that permit a great deal of mixing and matching styles, patterns and fabrics for adaptability and versatility. Cottons are still way ahead in popularity.

Leading patterns for cafes are dots, fresh little geometrics on patterned grounds. In ready-made draperies, the design approach remains unchanged, with floral, scenic vignettes still important.

Americans increased their milk consumption by 4.5 quarts per person last year, according to the American Dairy Association. They are also said to have consumed an average of 64 more pounds of butter, and 28 more pounds of cheese each, according to the American Dairy Association.

**CALL ON US**  
When In Need of  
**POULTRY - DAIRY  
RABBIT - HORSE  
OR DOG FEEDS**

LAWN and FARM SEEDS and FERTILIZERS

**FLOUR and CEREALS**  
ALL TYPES OF WATER SOFTENER SALT  
INSECTICIDES  
STOCK and POULTRY REMEDIES  
and  
PEST CONTROLS

BERRY BOXES  
EGG CARTONS  
POULTRY EQUIPMENT  
RABBIT FRYER CARTONS  
LITTER - HAY - STRAW

**FARMINGTON MILLS**  
Established 1855  
DELIGHT FLOUR and FEEDS  
L. E. GILCHRIST, Owner  
33468 State St., Farmington  
PHONE 0020

**Fences Improve Outdoor Living**

Fences can be more than an obstruction to four- and two-footed neighborhood marauders, says Robert Hale Ellis, Jr., prominent landscape architect.

With outdoor living dominating the family living habits more and more, Ellis suggests there are inexpensive ways to make this new mode of life even more enjoyable.

Fences designed to dress up a family yard, can give character to the architectural lines of the house, he says, as well as beauty and seclusion.

Texture, so important in modern art and decorating, is just as easy to develop for the outdoor living area, Ellis points out. Rough Douglas fir or western red cedar, for example, has natural characteristics which blend well with the natural setting. These woods can be obtained in lower grades and can be allowed to weather or can be stained to add life and character.


Fences come in many patterns and styling, with some of the most popular the basketweave, esplanade, and the lattice. The latter is designed to permit cooling breezes.

**Chemical Fertilizers Restore Plant Food To Soil**

Chemical fertilizers are putting back into our soils increasing amounts of the plant food removed by crops and erosion - more than three times as much as 15 years ago. These fertilizers have increased average yields per acre 20 per cent since World War I.

A single indication of the dividends they produce is the fact that 54 cents spent for fertilizers on wheat currently produces an added bushel selling today for more than four times this figure.


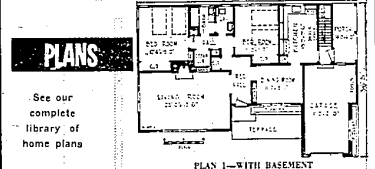
Quilting bees, almost a lost art in Southern rural areas, are coming back. Members of a Baptist church at Eru, Mississippi, are paying off their debt with a series of old-time work-togethers.



**• CUSTOM BUILDER  
• GENERAL CONTRACTOR  
• ESTIMATES GIVEN  
REMODELING**

**Floyd A. Robinson**  
1817 SALEM

*please!*  
**build!**  
*your new home NOW!*

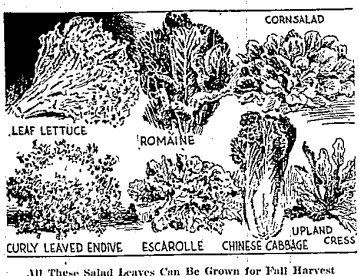
**PLANS**  
See our complete library of home plans

**MATERIALS**  
Build with quality materials from our stock

**LET US HELP YOU WITH YOUR HOME IMPROVEMENT PROBLEMS**

**FARMINGTON LUMBER CO.**

32800 Grand River in NOVI Phone 0020  
43755 Grand River Phone Northville 308



All These Salad Leaves Can Be Grown For Fall Harvest

**Early Vegetables Should Be Sown For Last Garden Harvest Of Year**

Early vegetables should be sown late for a final fall harvest. They must grow fast to mature before frost arrives. Most of them like the cool weather of autumn, and the average quality will be higher, and the harvest longer, as many survive the first frosts, and some endure freezing several times.

Quickest maturing vegetable is the early radish which matures in 25 days and is one of the varieties which require 115 days.

Between these extremes are varieties which may take 60, 80 or 90 days to reach the size and quality which best fits them for table use.

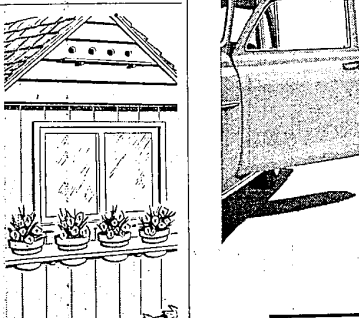
Seed catalogues usually give the period to maturity for each variety listed. From your local variety bureau you can ascertain the average date of the first killing frost in your vicinity. Compare these two, and you can easily avoid crops which have no chance to develop fully before winter.

There are two salad crops which are at their best in the fall - endive and Chinese cabbage. Chinese cabbage which matures in 90 days is difficult to grow in the summer, because it runs to seed, but in the short days of autumn, it makes beautiful elongated heads of crisp leaves having a suggestion of cabbage flavor which are delicious cooked or raw.

Vegetable crops which should not be sown in June include peas, early radishes, lettuce and spinach. All these require cool weather, and you may sow very early kinds in August, so they will mature in the autumn.

Quick maturing crops include snap beans, beets, carrots, endive, lettuce, kohlrabi, turnips, spinach, peas and radishes. The later you sow, the "earlier" should be the variety you sow.

Several vegetables can be left



A HAVEN "for the birds" is the unique idea shown above, tucked into the gable end of a house or garage. A small perch runs beneath pigeon holes bored into the siding. Under the window is a simply-designed planter consisting only of a board braced against the building. Holes in the board accommodate preferred size pots which may be easily lifted out for transplanting or to change the window box flower scheme.

**HARDENS WITH AGE**

One of America's unique commercial species, west coast hemlock, found principally in Washington, Oregon and Alaska, gets harder as it ages. This makes it one of the most sought after flooring lumber used in gymnasiums, schools and rooms where there is much traffic and wear.

To give those broiled lamb chops a different flavor try marinating them in a sauce made with 1/2 cup water, 1/2 cup soy sauce and 1/2 clove garlic. Cover them and refrigerate about 6 hours before broiling.

**BRIGHT AND LIGHT UPHOLSTERING TREND THIS YEAR**

Upholstery manufacturers underscore color and have injected fresh, vital new shades such as soft greens, rich reds, brilliant mauves, blues and pastels. Color lines are generally lighter and brighter.

Today's upholstery patterns are good mixers. They integrate well with a variety of decorative styles, adapt easily to modern or traditional, formal or informal living schemes. Almost limitless use is the object behind these versatile designs.

There are enough different types of textured upholstery now on the market to satisfy almost every individual taste. And the supply is continually being refreshed with newer, more unusual treatments. Textured fabrics are now as distinctly and deliberately different from one another as are patterned materials. There are rough weaves, bold plids, tufted friezes, delicately textured damasks, pronounced or subtle overall weaves, and a whole assortment of textures that form distinct patterns of their own.

Most marked style changes are seen in pile fabrics. Discreetly decorated backgrounds and overall textured surfaces are two important treatments in this group.

Enterprise Classified Ads Contact More Readers Than Any Other Local Advertising Method

*Is your auto insurance a misfit?*



**Auto-Owners**  
Fair and Square Rating Plan may save you money

At Last! ... a realistic method of rating drivers for auto insurance. If you use your car for business ... are under 25 and married ... if you are a farmer ... if you have an occasional male driver under 25 in your family ... if you are a male driver under 25 and have completed a driver training course ... Auto-Owners new driver classification will save you money on your automobile insurance.

Get the Facts About "Individualized" Auto Insurance  
PHONE OR WRITE OR DROP IN

**LAVERY INSURANCE AGENCY**  
30760 Grand River Phone 2210  
(Near 9 Mile)



**Bake once a month the freezer way**

Good buy on berries—how about baking some pies? Bake eight and "bank" six in your home food freezer. It'll keep them oven-fresh!

Treats galore in your own "store"



**Get out of the ordinary... GET INTO AN OLDS!**



**LOCAL DELIVERED PRICE OF OLDSMOBILE '68'**  
2-Door Sedan is **\$2316.62**  
State and local taxes extra.

Your price depends upon choice of model and body style, optional equipment and accessories. Prices may vary slightly in adjoining communities because of shipping charges. While sidewalk rates optional at extra cost.

... at a price that's surprisingly low!

Something happens when you go over to Olds! You discover that driving was never like this before. You find yourself enjoying every minute behind the wheel. Perhaps you least a little about your car... you compare it with others at the drop of a hat. And, of course, you'll find that Oldsmobile is outstanding in any comparison test you care to make—performance, styling, comfort... anything! Let us make the comparison for you—and get our genuine appraisal! Get out of the ordinary... get into an Olds... for a price that's surprisingly low!



**OLDSMOBILE**

SEE YOUR NEAREST OLDSMOBILE DEALER

**Earl Vivier** or visit 33205 Grand River Ave  
Phone Farmington 0950

GO AHEAD DRIVE IT YOURSELF! THE GOING'S GREAT IN A "ROCKET 8"!