

WANTED:


Neighborhood Correspondents

To supply The Farmington Enterprise with news items about activities of associations, clubs, groups and individuals in their neighborhood. Material will be used in a weekly column.

Correspondents are wanted for new subdivision developments and older areas in both the City and Township.

If the neighborhood in which you live is not being serviced with a column and you feel that you might be interested in preparing material for a column, give us a call for further information at Farmington 3000 or 3001.

**IF YOU WANT
GOOD
LUMBER
WE HAVE IT**



Whether it's a board or a carload, we can supply your needs with lumber like you used to get.

Good lumber means good construction. We are proud that careful, selective buying enables us to give you the very best.

**NO MONEY DOWN
UP TO 3 YEARS TO PAY**

**FARMINGTON
LUMBER CO.**

32800 Grand River Phone 0020
in NOVI
43755 Grand River Phone Northville 308

INDIVIDUALITY
DOMINANT IN
FURNITURE DESIGN

Individuality is a dominant characteristic of current furniture designs. In viewing the latest furniture offerings, fashion analysts note that the diversity of style, individual expression of function, and selection of finishes and trims provide an attractive choice of furniture to satisfy every taste.

Finishes provoke interest. Nineteenth century designs not only appear in expected cherry, but sometimes low even in a teak finish. And teak tones appear elsewhere. In solid as well as finish. Gray finishes gain the market. And the pigmented blond family appears on 18th century English designs. Pastels and even stronger hues are also significant in finishes.

Materials account for a good proportion of the variety and excitement in today's furniture designs.

John Clappison Sells Insurance

CALL ON U

When In Need of
**POULTRY — DAIRY
RABBIT — HORSE
or DOG FEEDS**

LAWN AND FARM
SEEDS AND
FERTILIZERS

FLOUR AND CEREALS
ALL TYPES OF
WATER SOFTENER SALT

INSECTICIDES
STOCK AND POULTRY
REMEDIANTS
and

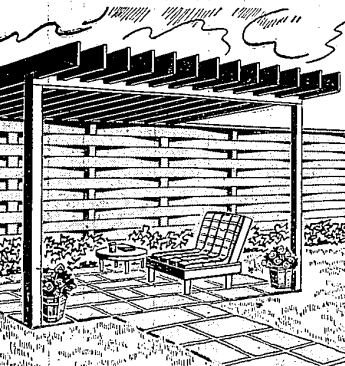
PEST CONTROLS
BERRY BOXES
EGG CARTONS

POULTRY EQUIPMENT
RABBIT FEEDER CARTONS
LITTER — HAY — STRAW

**FARMINGTON
MILLS**

Established 1885
DELICIOUS PLANT AND FEEDS
L. F. GILBERTSON, Owner
33408 State St., Farmington
PHONE 0020

Serves A Multiple Of Purposes



Estate-type woven wood fences are usually built for privacy, but can be double duty as screen and roof support for a smart little lounge area. A lowered roof of fir or cedar 2x8s may be any dimension floor area the patio demands. Inexpensive and weather-resistant, lower grades of these woods blend well with any landscaping and furnish textural beauty and comfort for busy day relaxing or entertaining. Two 4x4 posts of fir support the roof extension, and cedar furniture and shrubs carry out the wood theme.

Pansies Sown This Summer Will
Provide Flowers All Next Season

While listed as annuals in the seed catalogues, pansies and their cousins the Violas are really biennials. To get them in bloom early in the spring, whose cool weather they like best, sow them in mid-summer and keep them over the winter in a cold frame, or some other even simpler shelter.

The plants will hold their green leaves all winter and bloom in a cold frame as soon as the earliest spring flowers are out. If grown in

MASTER MIX
MAY BE SECRET
OF GOOD COOK

Many women who are masters at mixing up cakes, muffins and biscuits in a jiffy have a secret for their success. They use a master mix.

It's a mix that can be used for everything, explains Margaret Macbougall, of the foods and nutrition department at Michigan State University. It includes waffles, gingerbread, coffee cake and many kinds of cookies, cakes, muffins and biscuits.

The recipe for this unique time-saver lists the following ingredients: 9 cups sifted all purpose flour or 10 cups sifted cake flour, 1 1/3 cup double acting baking powder, 1 tablespoon salt, 2 teaspoons cream of tartar, 1/2 cup sugar and 2 cups shortening. Stir the baking powder, salt, cream of tartar and sugar into the flour and sift them three times together. Cut in the fat until this mix is the consistency of cornmeal. Store the master mix in a covered container at room temperature.

To measure the master mix for use, Miss Macbougall suggests pulling it lightly into a measuring cup and leveling it with a spatula. She also recommends using cake flour and an emulsified fat if you use the mix for cake baking. Read the labels on the shortening cans to be sure it is emulsified. Cake flour and this type of fat are musts when making cakes.

Many of the recent commercial cook books give directions for variations of commercial or home-made mixes, says Miss Macbougall.

John Clappison Sells Insurance

NOTICE OF PUBLIC SALE

1952 Mercury Monterey Convertible

TO BE SOLD

Monday, July 18, 1955

10:00 In the Forenoon

at

CURT HALL SALES & SERVICE

33224 Grand River
Farmington, Michigan

This car can be inspected any day, except Sunday, prior to the date of sale, at Curt Hall Sales and Service.

FARMINGTON STATE BANK

Thinning Out
Helps Crops
Grow Better

Failure to thin out plants too crowded in the garden will ruin the crop. The amateur should do this thinning by degrees and try to eliminate inferior plants and select the best specimens for survival.

No vegetable will mature normally in a crowded row. Not even leaf lettuce, which so many fail to thin, will develop its true crispness and flavor, when the plants are too close together.

The first step in thinning is to make sure each plant has room to grow without tangling roots with a neighbor. Do this as soon as the plants grow large enough to be handled. Remaining plants should stand at least an inch apart.

Before they have begun to crowd again many vegetables will be large enough for table use. A great advantage enjoyed by the amateur is the ability to harvest half-grown vegetables, which are often superior in flavor and tenderness. When harvesting the half-grown crops, pull up alternate plants, trying to leave the most promising ones to grow on.

This procedure may be repeated until the plants stand at the proper distance for maturity. If the garden is well fed, more plants can be grown than in soil which lacks fertility. Well fed plants grow faster, and extend in flavor and tenderness. A small area well fertilized and tended will be far more satisfactory than larger space in which plants are neglected.

Flower seedlings must be thinned out when sown directly in the garden. If broadcast they are not usually so crowded as in a row but they require more space as a rule than vegetables.

A Classified Ad Will Sell Those White Elephants!

JOHNNIE O'S MOBILE SERVICE

CAR WASH — OIL CHANGE
MOTOR TUNE-UP — LUBRICATION

The Orolinos Will Welcome a Visit from You
and Help You With Your Motoring Needs

We Have MAPS — TIRES — BATTERIES — Etc.
WILL CALL FOR AND DELIVER YOUR CAR

Farm. 9183 Cor. Orchard Lk. Rd. & 12 Mile
6 a.m. to 10 p.m. Mon. to Sat. — 7 a.m. to 11 p.m. Sunday

Lake Theatre

420 PONTIAC TRAIL PHONE MARKET 4-2151
WALLED LAKE

ON OUR NEW PANORAMIC WIDE-VISION SCREEN

Thurs., Fri., Sat., July 7, 8, 9

Cinemascope Production
LANA TURNER • EDWARD G. ROBINSON
"THE PRODIGAL"
In Color

GLENN FORD • VICTORIA THURDIS
"THE AMERICANO"
In Color

Sun., Mon., Tues., Wed., July 10, 11, 12, 13

Cinemascope Production
RICHARD TODD • JEAN PETERS
"A MAN CALLED PETER"
In Color

RANDOLPH SCOTT • JOCK MACALAN
"TEN WANTED MEN"
In Color

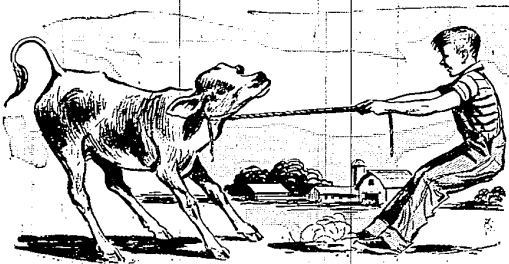
ALWAYS PLENTY OF CONVENIENT PARKING SPACE

We Build To Your Liking
YOUR PLANS OR OURS

Have Been Building in Farmington for 10 Years

R. W. ELLIS BUILDER INC.

29245 List Ave. Farmington Phone 0689

Did You Ever Hear the One
About the Dairy Farmer?

If you haven't, you should make the acquaintance of your Dairy Farmer! He furnishes about a fourth of your food every day and does so for a sixth of what you pay for the other three quarters. Ask any dietician.

This morning, as they do every morning 365 days a year, 13,000 dairy farmers arose at the crack of dawn, fed, watered and milked a quarter of a million tested cows, shipped 2,395 tons of pure, fresh milk to Detroit. That's 2.2 million quarts, including a surplus over table needs going into ice cream, cottage cheese and other healthful dairy products.

Putting on call an abundant daily supply of milk requires production and marketing efficiency of the highest order. The milk assembly line starts with a heifer. It's a line, 3 years long, you can't stop or start with a

push-button. Besides, your dairy farmer cooperatively owns plants, laboratories and transport equipment for receiving, testing, conveying and processing his milk shipments.

He supports industry-wide research for the improvement of his product and its uses. He employs management, scientists, technical personnel, stenographers, and truck drivers, in getting his milk from farm to market.

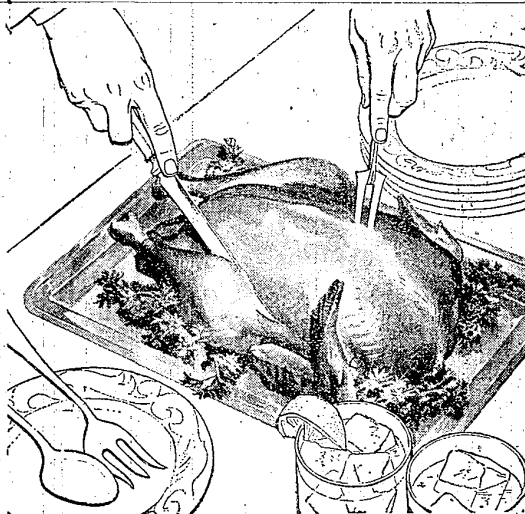
When you meet this farmer, he'll tell you truthfully that he earns less than factory wages for the time and money spent, but he'll say you'll get your milk, fresh from the farm, tomorrow morning.

MICHIGAN MILK PRODUCERS' ASSOCIATION

A FARM COOPERATIVE WITH 17,000 DAIRY FARMER MEMBERS IN 33 MICHIGAN COUNTIES . . . 13,000 OF THEM SHIPPING TO THE DETROIT MARKET

406 Stephenson Building

Detroit 2, Michigan



Bought in December . . .
enjoyed in July!

Turkey, bargain-priced in December, tastes especially good in July. Thanks to a home food freezer, poultry (and practically anything else) will retain all its natural flavor.

No matter how you serve it—cold and sliced, in a salad, or piping hot with all the trimmings—your turkey will be as fresh and tasty as it was the very day you put it away in your home food freezer. And here's a hint—with a freezer you can convert leftovers to "planned-overs." In your freezer they'll stay as tasty as when first prepared.



Upright or chest
buy the one
that fits
See your
DEALER
or Detroit Edition