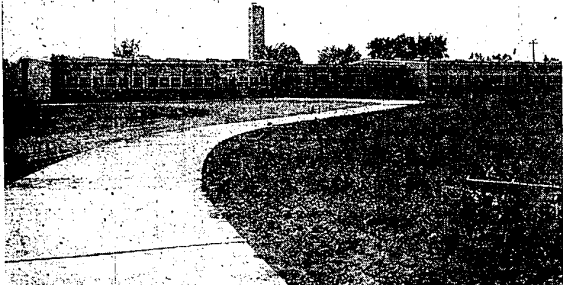
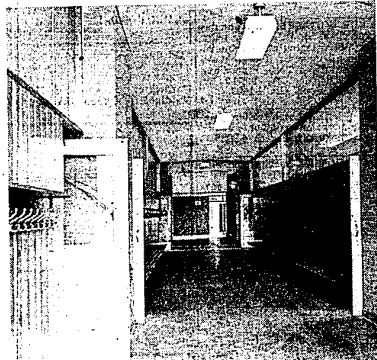


DOORS TO BE OPENED TO THREE NEW ELEMENTARY SCHOOLS SEPT. 8

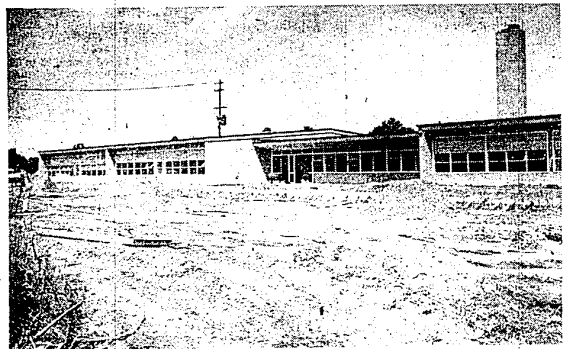
Approximately 1400 Youngsters To Be Accommodated In 42 Additional Classrooms At New School Buildings



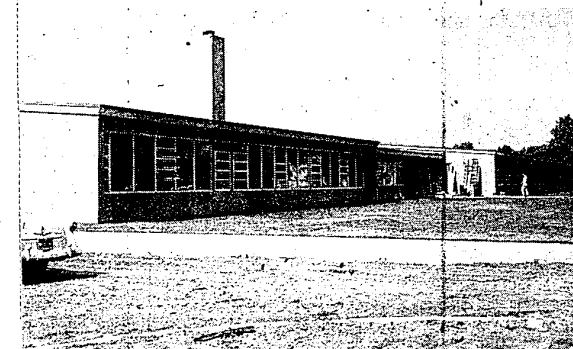
GILL ROAD School site, located just southwest of the Colfax intersection, is the smallest of the three new elementary schools; a 12 room unit. A winding, circular drive leads to the entrance of the school building.



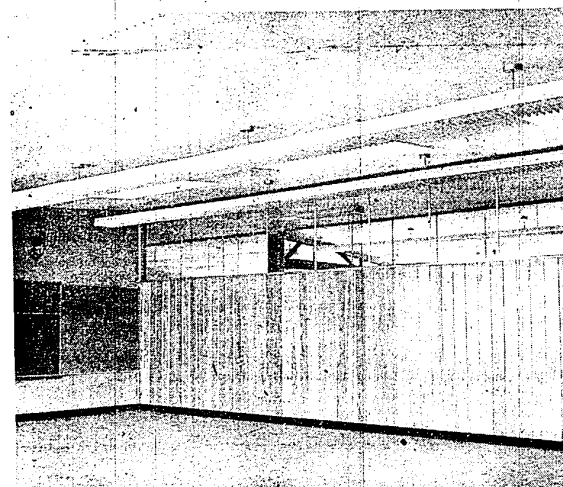
HALLWAYS in each of the schools provide ample walking space for youngsters going to and coming from their classrooms. Hangers are used on which to hang clothes with benches below to sit on.



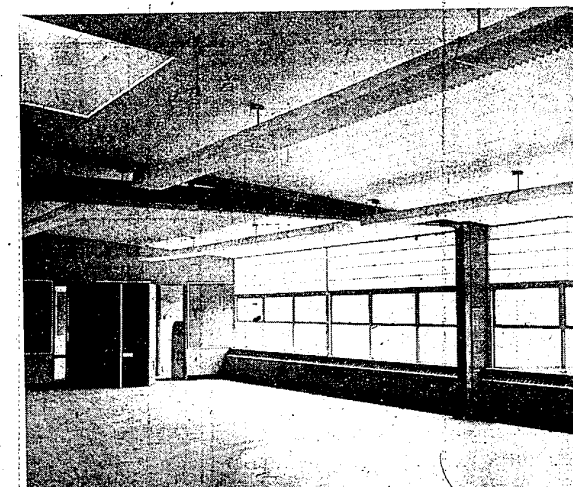
FOURTEEN MILE Road School is a 14-room unit located on Fourteen Mile at Middlebelt Road. The majority of youngsters attending this school will come from Franklin Knolls Subdivision. A four-room special education annex will be attached at this site.



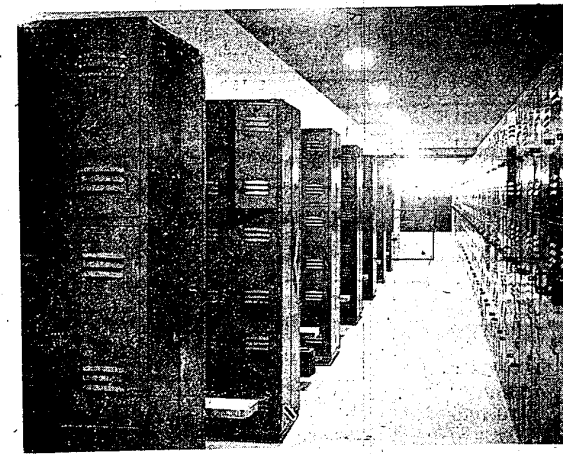
SHIAWASSEE ROAD School site is the largest of the three new elementary schools with 16 classroom units. The school is located at the southwest corner of Shiawassee and Tuck Roads. The school is designed to accommodate as many as 600 pupils.



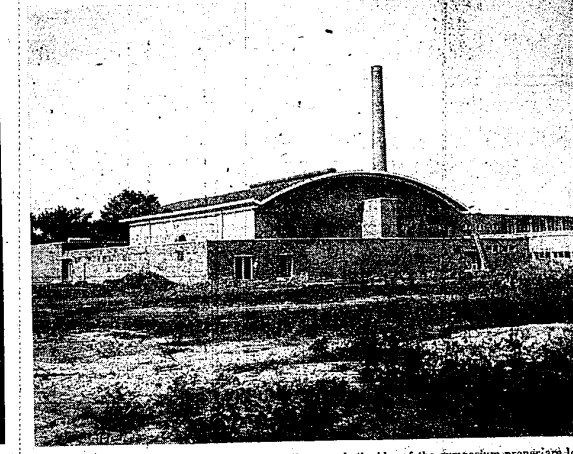
A SPECIAL FEATURE in each of the three new elementary schools is a multi-purpose room which can be used as two separate classrooms or made into one large room by means of a sliding door. Rest rooms in each classroom is another feature in the new schools.



WALLS backing to the hallway in each of the new buildings are done in wood paneling. Additional direct lighting in each classroom is provided through skylights while fluorescent lighting is used whenever indirect lighting is needed.



AMPLE LOCKER facilities and space for changing is provided in both the boys' and girls' locker rooms at the new gymnasium - auditorium attached to the present high school building. The picture above was snapped looking down the corridor of the boys' locker room.



A REAR VIEW of the gymnasium - auditorium addition at the high school gives a general idea of the layout of the building. Wings on both sides of the gymnasium proper are locker rooms. At extreme right in the photo can be seen a portion of the classroom addition.

All photographs for this special feature page on the three new elementary schools and the gymnasium - auditorium addition to the Farmington Township School District were taken by Lou Geisting of 22900 Frederick Street, a commercial photographer in Farmington.

Approximately 1400 school children will file into three new elementary school buildings now nearing completion in the Farmington Township School District just two weeks from this Thursday, September 8, when classes resume for another year.

Over 500 of this total number of pupils will be enrolled at the largest of the three new schools with 16 classroom, the Shiawassee School. Another 450 youngsters will be registered at the 14-room Fourteen Mile Road School and the remainder at the 12-room Gill Road School.

These youngsters will be entering schools and classrooms with many new and improved features for better and more healthful study as well as buildings of the most up-to-date modern design.

A great deal of color has been used in the decorating of the schools. Rooms have been painted in pastel shades of green, pink and coral. Red, blue, yellow, tan, pink and green Formica tops were selected for the classroom cabinets. Chairs of red, green, yellow and natural colors will be used.

All desks and table tops are plastic. Cost was not overlooked when this was done, and after careful consideration it was determined to go to added expense now to avoid additional heavy expenses in maintenance costs later on. The plastic tops are much more durable than are wooden tops.

Each classroom in the new schools is self-contained. Access to a washroom and rest room is possible from any room in the school without the youngsters leaving their rooms. In this manner teachers have better and closer supervision over their pupils at all times.

A library is located in each of the three elementary schools and is large enough to accommodate an entire class of students at one time. These libraries will be stocked with a wide variety of books for the young students' use and enjoyment.

The multi-purpose rooms in each of the schools will make it possible for larger groups of students to take part in special programs and activities at one time. When desired, this room can be converted into a small auditorium by means of a sliding door. When not needed for special occasions, the room becomes two classrooms.

At the Fourteen Mile Road School a four-room special education annex will provide well-rounded and supervised education for handicapped youngsters. This is the first special education building of this kind to be set up in the nation.

All classrooms at the new elementary buildings are now filled, but are designed to handle more youngsters when and if the need arises. Approximately 30 youngsters are now assigned to each classroom. Rooms, however, have been designed to handle as many as 35 youngsters effectively. An additional 150 students in all could thus be enrolled at the three new schools without causing undue hardship.

Need for additional school facilities such as the three new buildings opening this year in the School District is evident by the ever-increasing number of students enrolling in the school system. All indications are that more and more schools will have to be built in years to come to accommodate the large number of school age children moving into the area, according to Miss Minnie Zielke, elementary school coordinator. Already 478 kindergarten children have been enrolled for school this year, Miss Zielke said. With more to be registered in the next two weeks, she anticipated that the number might be increased to almost 600 before school starts.

The gymnasium - auditorium addition at the high school will offer excellent athletic facilities for both boys and girls in the school system. The gym will be divided down the middle by a huge sliding door. One side of the gym will be for boys' indoor sports and physical education activities. The other side will provide similar facilities for the girls.

When opened as one area by means of the sliding door, one of the largest auditoriums in this area will be available for school and community uses.

Township Board Pvt. Gary Hamlin Taking Training At Ft. Knox

(Continued from Page 1A)
ing Yakes, Township Police Chief, for additional personnel. Ernest Blanchard, Township Supervisor, stated that the Board should hire a third police officer provided there are sufficient funds in the budget for that purpose.

A. C. Leonard, Township Attorney, was authorized to institute court action against the O. and W. Tool Company on Ten Mile Road for alleged violation of the zoning ordinance. According to Township officials, a frame addition was added to the rear of the building in spite of the fact that the plant is in a non-conforming zone. The Attorney was also authorized to proceed with court action in connection with the removal of an unoccupied house on Francis Street which has been declared a health hazard by the Health Officer. Leonard was given authority to investigate alleged zoning violations in connection with the Western Tool and Die Company and to proceed if necessary with court action.

In answer to a question, Leonard stated that a cross bill of complaint is being filed in connection with the case of the Dachille Trucking Company vs. Farmington Township. The company instituted court action several months ago in connection with a decision of the Board to halt the removal of soil from an area in the vicinity of Farmington Road and Fourteen Mile Road. Leonard added that as soon as the cross-bill has been filed and an answer given, the docket will be placed on the court. It is estimated that the case will be heard in October. In the meantime, operations are continuing on the removal of soil.

At our house we are often deliberately dull and thereby get some needed sleep.

What this country needs is a lady's shoe that's large on the inside than on the outside.

Back in the old days, a man placed on the porky a mantle of universal protection. The newly slowpokes are easily captured and a man lost in the woods could always count on porky for meat for breakfast, lunch and dinner if necessary. Such a porky would drive any man from the woods.

But now the porky is merely a pine-tree chewer. Besides, modern search methods make it hard for a hunter to stay lost for long these days, so the wraps are off.

The fisher, for his side of it, would be a welcome addition. In some ways, to Michigan's wildlife scene. For one thing, he is a former resident that was pushed out by civilization. His fur is valuable.

Fishers are members of the weasel family and the Forest Service wants them around to control populations of porcupines, notorious chewers of pine trees.

Waighing in at 12 to 15 pounds, the fisher is generally able to conquer porky, weighing 10 to 12 pounds. but a wrestling match between the two is the show in for either side. The hunter probably gets a paw under the porky and tips him over to get at his exposed underside.

But now the porky is merely a pine-tree chewer. Besides, modern search methods make it hard for a hunter to stay lost for long these days, so the wraps are off.

The fisher, for his side of it, would be a welcome addition. In some ways, to Michigan's wildlife scene. For one thing, he is a former resident that was pushed out by civilization. His fur is valuable.

What this country needs is a lady's shoe that's large on the inside than on the outside.

Back in the old days, a man placed on the porky a mantle of universal protection. The newly slowpokes are easily captured and a man lost in the woods could always count on porky for meat for breakfast, lunch and dinner if necessary. Such a porky would drive any man from the woods.

But now the porky is merely a pine-tree chewer. Besides, modern search methods make it hard for a hunter to stay lost for long these days, so the wraps are off.

Classified Ads

Wanted . . .
PRACTICAL NURSE weeks work and work. Prefer hours 8:00 p.m. to 11 p.m. or evenings. GR. 4-9016. 47-1p

Lost and Found . . .
LOST - Bonus Embraceable wrist watch. Vicinity Roosevelt Wilson and Independence, Keesauke. Marjorie Osborne. GR. 4-9749. 24524 Wheeler. 47-1c

Lost and Found . . .
LOST - Parakeet, blue with gray wings. Albion, Nine Mile and Middlebelt section. GR. 4-9082. 47-1p

Lost and Found . . .
LOST - Brown wallet vicinity Grand River between 9 Mile and Farmington. GR. 4-3425. Reward. 47-1p

Lost and Found . . .
LOST - Parakeet, blue with gray wings. Albion, Nine Mile and Middlebelt section. GR. 4-9082. 47-1p

Found . . .
FOUND - August 16 - small black and white toy Collie type male dog, vicinity Grand River, Section 10, Grand River. GR. 4-9079. 47-1p