

**Groups Invited To Join School Study Committee**

Letters have been mailed to 16 different civic, service and P. T. A. organizations in the Clarenceville School District inviting them to name representatives to a special study committee being organized to assist with the planning of a new high school building.

Officials stated that a meeting of the committee will be called as soon as sufficient replies to the invitation have been received. The suggested list of representative organizations was prepared at a sub-committee meeting held last week.

*Carpet goes with children...*



**Especially Bigelow CARPET!**

It's quieter, cushions children's falls, is easy to keep clean—just a whisk of your vacuum does it! It's never too early to introduce Bigelow to your children—no need to wait until they grow up!

**Bigelow carpet is easy to buy!**

For example — Bigelow Honolulu can be installed wall-to-wall in an average home\* — including padding — for only

**\$15.00 PER MONTH**

\*living room 12'x18'  
dining area 9'x9'  
bedroom 9'x12'  
TOTAL 45 sq. yds.

**BOB HARRIS FLOOR COVERING**  
30924 GRAND RIVER, corner Nine Mile Rd.  
FARMINGTON, MICHIGAN  
Phone GR. 4-2531 Free Estimates



**ART STUDENTS** of a Farmington High School class are shown touching up some pieces of their work as part of a table display for a Conference of School Counselors held in Lansing recently. In the photo, left to right, standing, are: Don Shuster, Dewey Nichols and Barbara Hoppe. Seated at the table, left to right, are Jane Denio and Judy Jalbert. The table displays traced progress in education from the kindergarten through college. Farmington students' contribution to the total series was on the high school phase of education.

**Judge N. Kaufman Speaks To Jaycees On Problems Of Juvenile Delinquency**

"The best known way to combat the growing social problem of juvenile delinquency is to turn back the clock to old-fashioned family prayer meetings, family meals, and family discussion meetings." That was the advice of Detroit's Judge Nathan Kaufman at a dinner meeting of Farmington Junior Chamber of Commerce members and their wives at Huck's Redford Inn Monday night.

Judge Kaufman termed as "unfortunate" the fact that five per cent of teen agers today between thirteen and seventeen years of age can be classified as "delinquent."

The well-known jurist, who appears on television in a weekly re-enactment of juvenile court cases, said there is an increasing trend toward immorality among young people of high school age. He stated that this can be effectively checked only through family control.

While expressing solace in the fact that ninety-five per cent of our young people are fine citizens, he termed as deplorable the lack of adequate facilities for caring for the other five per cent, many of whom require mental rehabilitation under trained supervision.

The judge indicated that a check of Farmington's juvenile crime record revealed a comfortable lack of serious delinquency. He cautioned, however, that when left unchecked even a small incidence of such activity can insistently develop and spread until a serious community problem develops.

He urged parents to set times for teenage children to be home at night and to limit the time for watching television and comic book reading.

At the same meeting, Junior Chamber of Commerce president William Conroy welcomed nineteen new members into the Farmington club. He also announced that the annual Christmas party for children of the community will be held this year at the Farmington Senior High School on December 17.

The club is now making arrangements for five foreign students from the University of Michigan to eat Thanksgiving Day dinner with members' families.

The owner of an acre of ground has theoretical deed to 52,363,000 tons of earth according to a Rand McNally report. Estimate is based on a pyramidal projection of an acre of ground which is extended so that its apex is at the earth's core.

**Sincerely Yours**

Letters submitted to the Editor for publication must be signed. Opinions expressed in this column are those of the writer and do not necessarily represent the policies of this newspaper.

To the Editors:  
I would like to compliment the members of the Zoning Board for their stand on spot zoning. At their last meeting Wednesday, November 10, several requests for down-grading were refused.

Many people have invested substantial sums in new homes in our Township since the zoning ordinance was adopted. It is only fair that the ordinance be upheld and enforced for the protection of the many, instead of for personal gains for a few.

There may be instances where re-classification from residential to commercial would be desirable. Before any such requests are brought before the zoning board, however, I would like to see complete blueprints and detailed descriptions of the proposed projects published in The Farmington Enterprise for several weeks in advance. It would also be interesting to hear the land owner's (or developer's) own version on how the proposed change would benefit the neighborhood.

Victor Rust  
Try A Classified Ad!

**A. Siver To Take Bride Thanksgiving Evening**

At a candlelight ceremony at 6 p.m. on November 24, Thanksgiving Day, Mr. Allen Siver of 32515 State Street and Miss Gloria LaValley of Detroit will be joined in Holy Matrimony. The ceremony will be solemnized at the Forest Hills United Missionary Church on Twelve Mile Road.

Mr. Siver formerly taught school here at the Ten Mile Elementary School.

**Westbrook Mothers' Club Holds First Luncheon**

The first of three luncheons to be sponsored this year by the Westbrook Mothers' Club was held Wednesday, November 18, at the home of Jeanne Bennett at 21118 Tuck Road in Farmington.

Two luncheons will be held later in the school year on dates yet to be set.

On the menu for the first luncheon was vegetable soup or oyster stew with crackers, mixed sandwiches, pie, cake, coffee and tea.

Subscribe To The Enterprise!  
**KENN LOOMIS INSURANCE**  
DIAL Greenleaf 4-1600

A Classified Ad in The Farmington Enterprise Will Contact Over 13,000 Potential Customers in the Farmington Area. Try one Today!

**USE OUR LAY-AWAY PLAN 31 Shopping Days 'Til Christmas**

- Columbia 'Tru-Fit' Diamonds
- Watches
- Birthstone Rings
- Tie Bars
- Cuff Links
- Money Clips
- Billfolds by Buxton
- Watch Bands
- Pins
- Earrings
- Necklaces
- Bracelets
- Pen and Pencil Sets
- Costume Jewelry Sets
- Ceramic Gift Ware
- New Ladies' Sunbeam Razors
- Men's Shavers
- Silverware
- Clocks
- Travel Alarm Clocks
- Identification Bracelets
- Kiddies' Jewelry
- Silver for Kiddies
- Holloware

**Philip B. Thomas**  
JEWELER  
23619 Farmington Road GR. 4-4061

**From where I sit... by Joe Marsh**



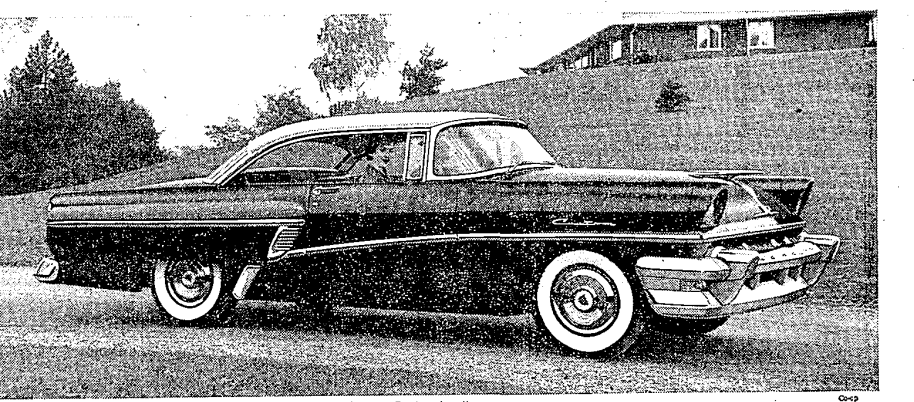
**Seen Monk's "Better Half"?**

Monk McCarthy's latest creation has the town talking again. You can see it parked in front of Monk's auto repair shop on Maple. Remember last year Monk cut two cars in half, and put their front ends together? You couldn't tell if the thing was coming or going. Sure attracted attention. Now Monk's taken Tog Morgan's old sedan and completely restored one half of it. One side is as good as new, the other looks like—well, Tog's old car. "Sort of a before-and-after demonstration," Monk told me, "shows folks the kind of work I do."

From where I sit, some of Monk's ideas may look a little wild sometimes... but I wouldn't want to tell him how to run his business any more than I'd like him to tell me what beverage to enjoy. He always keeps a hot pot of tea in his garage—I'd rather have a cold glass of beer—but respect for each other's opinion is "auto-matic with us both."

Joe Marsh

**New high horsepower! Low silhouette styling! In THE BIG M's lowest-priced Custom series**



Newest model in the Custom series—the low-silhouette Mercury Custom hardtop.

Now you can drive home a Mercury with **BIG M** size, styling and performance at a price below many models of the low-price 3\*

Here's the year's biggest buy. Just wait till you see the price tag! For this year Mercury sets a new standard for style and power in its lowest-price Custom series.

**LOW-SILHOUETTE STYLING NOW IN CUSTOM SERIES.** The car shown above is the new Mercury Custom hardtop. It's only 58 1/2 inches high—the same low, sweeping silhouette available up until now only in Mercury's top-line Montclair series. And there are five more equally stunning Custom models to choose from—one

that's just the ticket for every need and budget. A NEW HIGH IN USABLE POWER—All big M Customs have new SAFETY-SURGE V-8 engines—with the highest horsepower ever offered in Mercury's lowest-priced series. But what you'll notice most is the big M's greater usable power (torque). There's far more "lift" and "go" for getaways and passing—far more working power for driving ease and safety.

**NEW LOW-PRICE POWER FEATURES**—Mercury offers the widest choice of power features in the industry—and now at a new low price. With this low-cost Custom model you can easily afford the added convenience of power steering, power brakes, 4-way power seat, power windows and Multi-Luber—Mercury's exclusive in-its-class push-button lubrication.

You get a fully power-equipped car at an economy price. 3 SERIES, 13 MODELS IN ALL—In addition to the Custom Series, you have 7 more models in the Monterey and Montclair series to choose from—with 225 horsepower available.† Why wait, when a big M costs so little? See us today.

- COMPARE THESE BIG M FEATURES WITH ANY CAR AT ANY PRICE**
- New high in horsepower and torque.
  - Improved ball-joint suspension for easy handling.
  - Quick-response Merc-O-Matic Drive (optional).
  - 10 new Safety-Engineered features—even the steering wheel is safer—its impact absorbing.
  - New Flo-Tone color styling.
  - More consistent value—Mercury tops its class in resale value year after year.

\*Based on comparison of manufacturers' suggested list or factory retail prices, using the Mercury Medalist 2-door Sedan.

**For 1956... the big move is to THE BIG MERCURY BOB DUSSEAU, Inc.**

LINCOLN - MERCURY  
33015 GRAND RIVER  
KENWOOD 2-2314  
GR. 4-3170

*flowers to Delight Her*

For **Thanksgiving**

**NICK BOS**  
FLORIST  
19469 Gaylord  
Werner Jagenberg, Prop.  
KE. 1-1674-5