

Keeping Game For Long Periods Requires Permit

The coming of home and public deep freeze food storage plants in recent years has made an old game meat increasingly important to Michigan's sportsmen.

The law declares that game birds and animals may be kept 60 days after the close of the respective hunting season. But if a sportsman wants to keep the legal game meat longer than that, he can request and obtain a permit from any conservation officer.

Ducks, geese and other migratory waterfowl are covered by a federal law that allows a hunter to keep the birds 90 days.

Goodness and philanthropy begin with and never stop working.

A Classified Ad Will Reach Over 15,000 Prospective Clients

"LET THERE BE LIGHT: AND THERE WAS LIGHT."

It happens that the time ordained for us to learn the secrets of how to live a longer and a healthier life is almost here. This year there will be more "Light" on how to overcome some of the killers that have plagued mankind.

Many of the miracle drugs such as the antibiotics, were all about us waiting for discovery.

"The Most High has created medicines out of the earth." Ecclesiastes tells us, and as soon as each one is revealed to us we gratefully seek them in our prescription department.

YOUR PHYSICIAN CAN PHONE GR. 4-2011 WHEN YOU NEED A MEDICINE

Pick up your prescription if shopping near us. A great many people entrust us with the responsibility of filling their prescriptions. May we compound yours?

Quotation from the Bible (Genesis 1:3) Copyright 1957 (10-2)

SMITH Rexall DRUGS
REXALL FOR RELIABILITY

27702 W. 8 Mile Road GR. 4-2011

Introducing KENN LOOMIS



Secretary of State's office in Farmington for fifteen months, and he is now in his twenty-second year of conducting a very successful General Insurance Business for this community at 23284 Farmington Road.

Due to his vast experience in all phases of business in this area, his varied interest in all phases of community and governmental work, Mr. Loomis is well qualified to handle all of your real estate matters. If you have property for sale, or are interested in purchasing any type of real estate, Kenn will appreciate your calling him at Farmington, Greenleaf 4-1600, or stop in at his office at 23284 Farmington Road, where it is easy to park.

Our firm has handled practically every type of real estate transaction in Oakland County for more than thirty years and is comprised of people who are qualified in every phase of real estate. We feel that with the addition of Mr. Loomis to our staff, we will be able to help solve your real estate problems in an even more efficient and business-like manner.

ROY ANNETT, INC., Realtors
28 E. Huron St. Pontiac, Mich. Federal 8-0406

LEGAL NOTICE

FARMINGTON TOWNSHIP BOARD PROCEEDINGS

The Regular Meeting of the Farmington Township Board, called and held at 8:00 p.m. by the Chairman on the 27th day of December, A.D. 1956.

The Record will further show that Gain, Chairman, Cairns, Clerk, Avery, Harris, Goers, Westlake and Tardy, members of the Board, were all present.

Minutes of the Board Meeting held on December 10th, 1956 were read by Cairns, Clerk. No corrections, stand approved as read.

Communications: Letter from Highland Construction Company, dated December 27, 1956, owners of Brookhill Estates, South side of Twelve Mile between Middlebelt and Inkster, in re central water system.

MOTION by Harris, supported by Goers, that we table this matter of Brookhill Estates water system until we have an Ordinance covering water and sewage. Carried.

Proposed rezoning of Brookside Park Subdivision from Residential 10 to Residential 11, lots on Eight Mile Road, described as follows:

That the following property now indicated on the Zoning Map of Farmington Township, Oakland County, Michigan, as follows:

Proposed rezoning of Brookside Park Subdivision from Residential 10 to Residential 11, lots on Eight Mile Road, described as follows:

That the following property now indicated on the Zoning Map of Farmington Township, Oakland County, Michigan, as follows:

MOTION by Tardy, supported by Avery, that we accept the recommendation of the Zoning Board and County Coordinator and rezoned to Residential 11 the property described above. Carried.

MOTION by Westlake, supported by Goers, that we accept recommendation of Planning Committee and approve Final Plat of Woodbrook Subdivision. Carried.

As to Lot on Middlebelt near Grayfield — 0.80 acres, NW1/4 of SW1/4 of Section 25, Plat No. 2-416, the Planning Committee recommends that it not be rezoned to Commercial.

MOTION by Avery, supported by Westlake, that we accept the recommendation of the Planning Committee and not rezoned to Commercial. Carried.

MOTION by Westlake, supported by Avery, that we set up a Special Fund to handle Dog Tax collections in National Bank of Detroit. Carried.

MOTION by Cairns, supported by Tardy, that we extend the real estate tax collection date to February 28th. Carried.

MOTION by Westlake, supported by Avery, that we grant permission to Pate & Hirm to place a water system, with costs, to include the extension to 12 Mile Road. Carried.

MOTION by Tardy, supported by Avery, that meeting be adjourned at 9:45 p.m. Respectfully submitted, FLOYD A. CAIRNS, Clerk.

The views expressed by husbands are not necessarily those of the management.

Rapid Industrial Growth Reported In Michigan In 1956 By Economic Development Department

The year 1956 was a period of rapid growth in Michigan, the Michigan Economic Development Department reported last week.

They indicated that not only did out-of-state companies continue to locate new plants in Michigan, and existing Michigan industries continued to expand within the state at a good rate but that non-agricultural employment reached a new peak.

Auto production came back strong after a mid-year slump, it was added.

The undeveloped portion of dense contracts under administration in Michigan at the end of the year was valued at approximately \$440,000,000. Some 300 Michigan firms were reported by the commander of the Detroit Ordnance District Col. E. D. Mohler engaged in some phase of guided missile production under contract.

Proposed rezoning of Brookside Park Subdivision from Residential 10 to Residential 11, lots on Eight Mile Road, described as follows:

That the following property now indicated on the Zoning Map of Farmington Township, Oakland County, Michigan, as follows:

Proposed rezoning of Brookside Park Subdivision from Residential 10 to Residential 11, lots on Eight Mile Road, described as follows:

That the following property now indicated on the Zoning Map of Farmington Township, Oakland County, Michigan, as follows:

MOTION by Tardy, supported by Avery, that we accept the recommendation of the Zoning Board and County Coordinator and rezoned to Residential 11 the property described above. Carried.

MOTION by Westlake, supported by Goers, that we accept recommendation of Planning Committee and approve Final Plat of Woodbrook Subdivision. Carried.

As to Lot on Middlebelt near Grayfield — 0.80 acres, NW1/4 of SW1/4 of Section 25, Plat No. 2-416, the Planning Committee recommends that it not be rezoned to Commercial.

MOTION by Avery, supported by Westlake, that we accept the recommendation of the Planning Committee and not rezoned to Commercial. Carried.

MOTION by Westlake, supported by Avery, that we grant permission to Pate & Hirm to place a water system, with costs, to include the extension to 12 Mile Road. Carried.

MOTION by Tardy, supported by Avery, that meeting be adjourned at 9:45 p.m. Respectfully submitted, FLOYD A. CAIRNS, Clerk.

The views expressed by husbands are not necessarily those of the management.

The year 1956 was a period of rapid growth in Michigan, the Michigan Economic Development Department reported last week.

They indicated that not only did out-of-state companies continue to locate new plants in Michigan, and existing Michigan industries continued to expand within the state at a good rate but that non-agricultural employment reached a new peak.

Auto production came back strong after a mid-year slump, it was added.

The undeveloped portion of dense contracts under administration in Michigan at the end of the year was valued at approximately \$440,000,000. Some 300 Michigan firms were reported by the commander of the Detroit Ordnance District Col. E. D. Mohler engaged in some phase of guided missile production under contract.

Proposed rezoning of Brookside Park Subdivision from Residential 10 to Residential 11, lots on Eight Mile Road, described as follows:

That the following property now indicated on the Zoning Map of Farmington Township, Oakland County, Michigan, as follows:

Proposed rezoning of Brookside Park Subdivision from Residential 10 to Residential 11, lots on Eight Mile Road, described as follows:

That the following property now indicated on the Zoning Map of Farmington Township, Oakland County, Michigan, as follows:

MOTION by Tardy, supported by Avery, that we accept the recommendation of the Zoning Board and County Coordinator and rezoned to Residential 11 the property described above. Carried.

MOTION by Westlake, supported by Goers, that we accept recommendation of Planning Committee and approve Final Plat of Woodbrook Subdivision. Carried.

As to Lot on Middlebelt near Grayfield — 0.80 acres, NW1/4 of SW1/4 of Section 25, Plat No. 2-416, the Planning Committee recommends that it not be rezoned to Commercial.

MOTION by Avery, supported by Westlake, that we accept the recommendation of the Planning Committee and not rezoned to Commercial. Carried.

MOTION by Westlake, supported by Avery, that we grant permission to Pate & Hirm to place a water system, with costs, to include the extension to 12 Mile Road. Carried.

MOTION by Tardy, supported by Avery, that meeting be adjourned at 9:45 p.m. Respectfully submitted, FLOYD A. CAIRNS, Clerk.

The views expressed by husbands are not necessarily those of the management.

operating, a number of them after closing other states.

Nine companies announced plans to move Michigan plants to other states, while more than 200 companies announced significant expansion of their existing plants in Michigan.

Reports of the 1954 Census of Manufactures released during the year (the first such census taken since 1947) showed that Michigan ranked first in the nation in dollar value of new capital expenditures.

Ohio was second, followed by Pennsylvania, New York, Illinois, California and Texas, in that order.

Another major business indicator showed Michigan second only to New York in payment of federal taxes. The federal tax contribution from Michigan totaled \$7,156,469,000, topped only by New York's \$14,316,238,000.

Most of the Michigan total came from taxes on individual incomes. This figure was about 55% higher. Michigan corporations paid more than 32% higher in income and profit taxes and more than 11% higher in manufacturers' taxes.

Traditionally ranked fifth and sixth, Michigan leaped to first place in 1956.

Population estimates released November 18 by the Census Bureau of the U. S. Department of Commerce showed Michigan leading all states of the Northeast and North Central regions, the concentrated industrial area of the country, in population gain since the 1950 census.

With 3 population now estimated at 7,516,000, Michigan had an increase of 18 per cent from April 1950 to July 1, 1956.

Michigan ranked high during the year on the basis of family income. Out of 260 metropolitan areas of the United States listed in a compilation of Sales Management magazine, the 12 Michigan areas all were in the upper 46 per cent.

The Detroit area, with an average family income of \$7,220, stood first among all metropolitan areas of more than 2 million population.

In order to maintain this high standard for Michigan's economy, an increasing number of organizations showed Michigan leading all states of the Northeast and North Central regions, the concentrated industrial area of the country, in population gain since the 1950 census.

Michigan ranked high during the year on the basis of family income. Out of 260 metropolitan areas of the United States listed in a compilation of Sales Management magazine, the 12 Michigan areas all were in the upper 46 per cent.

The Detroit area, with an average family income of \$7,220, stood first among all metropolitan areas of more than 2 million population.

In order to maintain this high standard for Michigan's economy, an increasing number of organizations showed Michigan leading all states of the Northeast and North Central regions, the concentrated industrial area of the country, in population gain since the 1950 census.

Michigan ranked high during the year on the basis of family income. Out of 260 metropolitan areas of the United States listed in a compilation of Sales Management magazine, the 12 Michigan areas all were in the upper 46 per cent.

The Detroit area, with an average family income of \$7,220, stood first among all metropolitan areas of more than 2 million population.

In order to maintain this high standard for Michigan's economy, an increasing number of organizations showed Michigan leading all states of the Northeast and North Central regions, the concentrated industrial area of the country, in population gain since the 1950 census.

Michigan ranked high during the year on the basis of family income. Out of 260 metropolitan areas of the United States listed in a compilation of Sales Management magazine, the 12 Michigan areas all were in the upper 46 per cent.

The Detroit area, with an average family income of \$7,220, stood first among all metropolitan areas of more than 2 million population.

In order to maintain this high standard for Michigan's economy, an increasing number of organizations showed Michigan leading all states of the Northeast and North Central regions, the concentrated industrial area of the country, in population gain since the 1950 census.

Michigan ranked high during the year on the basis of family income. Out of 260 metropolitan areas of the United States listed in a compilation of Sales Management magazine, the 12 Michigan areas all were in the upper 46 per cent.

The Detroit area, with an average family income of \$7,220, stood first among all metropolitan areas of more than 2 million population.

In order to maintain this high standard for Michigan's economy, an increasing number of organizations showed Michigan leading all states of the Northeast and North Central regions, the concentrated industrial area of the country, in population gain since the 1950 census.

Michigan ranked high during the year on the basis of family income. Out of 260 metropolitan areas of the United States listed in a compilation of Sales Management magazine, the 12 Michigan areas all were in the upper 46 per cent.

The Detroit area, with an average family income of \$7,220, stood first among all metropolitan areas of more than 2 million population.

In order to maintain this high standard for Michigan's economy, an increasing number of organizations showed Michigan leading all states of the Northeast and North Central regions, the concentrated industrial area of the country, in population gain since the 1950 census.

Michigan ranked high during the year on the basis of family income. Out of 260 metropolitan areas of the United States listed in a compilation of Sales Management magazine, the 12 Michigan areas all were in the upper 46 per cent.

The Detroit area, with an average family income of \$7,220, stood first among all metropolitan areas of more than 2 million population.

In order to maintain this high standard for Michigan's economy, an increasing number of organizations showed Michigan leading all states of the Northeast and North Central regions, the concentrated industrial area of the country, in population gain since the 1950 census.

Michigan ranked high during the year on the basis of family income. Out of 260 metropolitan areas of the United States listed in a compilation of Sales Management magazine, the 12 Michigan areas all were in the upper 46 per cent.

Michigan Mirror

(Continued from Page 2B)

organization. "Four under forty" is the catchy reference to the four young Republicans who are beginning their first terms as Congressmen in Washington.

They are William S. Broomfield, Oakland County; Charles E. Chamberlain, Lansing; "Pint" area; Robert McIntosh from the northern part of the lower peninsula; and Robert P. Griffin from the thumb area.

Party hopes for inspiration and leadership rest on the shoulders of these four. All have good records as young GOP leaders. All are considered dynamic, personable, bright and keen politicians.

All are known as "modern" Republicans, subscribing in general to principles and policies of President Eisenhower.

As freshmen Congressmen in the House of Representatives, they will be watched by Michigan's Republicans in the hope that their record of activity there will serve to unify and advance the GOP cause within the state.

Dates have been set for State party conventions. Democrats will be meeting February 22. Republicans will meet in Detroit February 9. Both parties nominate candidates for positions on the spring ballot.

These include candidates for Superintendent of Public Instruction, State Highway Commissioner, Justices of the State Supreme Court, the members of the University of Michigan Board of Regents, two members of the State Board of Agriculture of Michigan State University, a member of the State Board of Education.

The GOP must also select a new chairman and vice-chairman to head the State Central Committee. John Peairs, present chairman, announced he will not continue in the post.

Number of Trailer Parks Doubled In State Since '50

The number of licensed trailer coach parks in Michigan has more than doubled since 1950, the Michigan Department of Health said today.

Willard Shepard, director of the department's engineering division, revealed that during 1956 licenses were issued for 434 trailer parks with accommodations for 19,922 trailers.

In 1950 Michigan licensed 202 parks with sites for parking 9,068 trailers.

In the last year the department also issued permits for construction of 107 new parks with 4,707 parking sites.

Authority To Give Talk On Vegetables

Vegetable gardeners will have an opportunity to hear what is new and best among the new vegetable varieties when Professor John C. Oja, horticulturist from Michigan State University speaks at 7:30 a.m., Tuesday, January 15 at the hall across from the Wayne County Agricultural Agent's Office, 3939 Newberry Street, Wayne.

Dr. Carew is co-author of "Vegetable Production and Marketing," an editorial consultant for a national vegetable magazine, and a frequent speaker before vegetable growers throughout northeastern United States.

Livonia Soldier Promoted To PFC Rank In Germany

Richard W. Oja, son of Mr. and Mrs. Wayne A. Oja, 19319 Westmore, Livonia, recently was promoted to private first class in the 27th Anti-Aircraft Artillery Battalion.

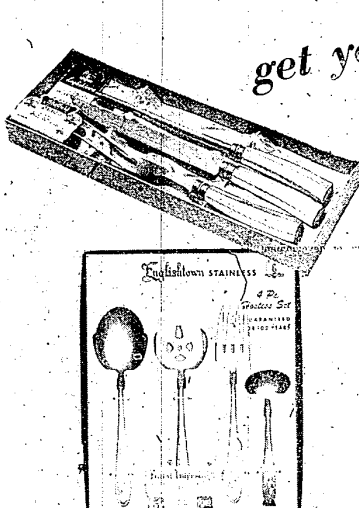
Oja is an editing clerk in the battalion's Headquarters Battery. He entered the Army in December 1955 and arrived in Europe last October.

Oja attended Michigan State University.

John Clappison Sells Insurance Phone GR. 4-3511

CLEARANCE!
JANUARY

of Odds AND Ends at
MAC'S 5c to \$5 STORE
GR. 4-4412 S. TRACEY, Owner 33317 Grand River
OPEN Friday and Saturday Evenings to 9 p.m.



get your **FREE GIFT** IN Farmington BY **SAVING NOW**

January is the month to save — to earn our above-average earnings all through 1957, so save \$100.00 with us now! You'll add to family security and you'll add to your home by receiving one of the lovely free gifts we're offering:

YOUR CHOICE:

HOSTESS SET —
A heavyweight stainless steel import—hand-crafted and guaranteed for 100 years! Englishtown's lovely "Lilac Time" pattern cold meat server, salad fork and spoon and sauce or gravy ladle. Retail \$9.95.

CARVING SET —
Famous Sheffield Steel carving blade, imported from England! Set consists of guaranteed stainless knife and fork, sharpener of special fast-sharpened hard steel. Marbelized white handles. Retail \$9.50.

LIMIT: One Gift per Family — Offer Expires Jan. 31, 1957

SAVINGS EARN AND GROW at FARMINGTON SAVINGS

Make 1957 a year of financial progress — save with us every payday! Your funds will share generous, above-average earnings twice each year, while insured safe by the F.S.L.I.C., a permanent agency of the federal government. Your local savings and loan association offers save-by-mail service, convenient hours, helpful service from a staff of local people, and complete financial facilities. Stop in soon — your free gift is waiting for you!

Current Rate
3%
Per Annum

Save with your LOCAL savings center

Farmington Savings

The Friendly Institution

22778 Orchard Lake Road — Now

10 Mile Road at Orchard Lake Road — Soon

HOURS 9:30 a.m. to 5 p.m. Monday through Thursday
9:30 to 7:00 p.m. Friday Open Until NOON Saturday

FORDS

1956 DEMONSTRATORS

and USED CARS

\$169.00 DOWN

\$52.20 Per Month

Up to 36 Months To Pay

BERLING - McHUGH, INC.

GR. 4-1234

Ask For FRANK or BILL