

"The Minute Men of today are those who can make it to the refrigerator and back with a sandwich while the commercial is on."
—George Hart

Nominate and Elect
WENDELL BROWN
Candidate For Township
Trustee—(Republican)

COLLEGE OFFICER

Miss Joan Puckett, Farmington, is secretary-treasurer of the French Club at Anderson, Indiana, College, where she is a freshman business major. Miss Puckett is the daughter of Mr. and Mrs. Kenneth Puckett, 24730 Hathaway, Farmington.

John Clappison Sells Insurance, Phone GR. 4-3511

Rambling East BETWEEN Nine - Ten Mile

"Serving the Area Between 9 and 10 Mile from Truck to Inkster Road"
Mrs. Ray Matsen
GR. 4-6986

Mr. and Mrs. R. Wells and family have just returned from a three week's vacation in Florida.

A group of ladies in the neighborhood are now making efforts to form a "T.O.P.S." club but need more members. Anyone over-weight wishing information on the club are asked to call Pat Ray at GR. 4-3154.

T.O.P.S. stands for "Take Off Pounds Sensibly."

Jack Phelps, formerly of Grayfield Avenue, is home on leave from the Marine Corps in San Diego, California. Jack is now in the Marine band.

Kathleen Santo and Sandy Hubert spent the weekend at Mosses farm snow disking.

Sandy Matsen celebrated her twelfth birthday January 4 with a pajama party. Helping her celebrate were Cookie Thornton, Adele Kormondy, Jaylene Hartwell, Laura Coates, Linda Landauer, Penny Terry, Shirley Grand, and Susan Blanchard. The girls enjoyed games and ice skating following a birthday supper.

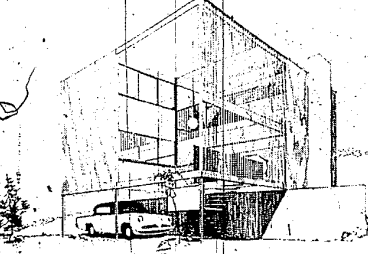
Boy Scout Troop 35 spent Saturday at the cottage of Mr. and Mrs. Latham on Big Crooked Lake near Brighton. The boys enjoyed a day of ice skating and ice fishing.

The Woodbine Association met at the Middlebelt School last Tuesday evening. A few by-laws changes were made, one of which pertained to the holding of the meetings. They will now be held three times a year. All Woodbine Subdivision residents are asked to attend the meetings and join the membership.

Mrs. Simon's daughter, Dolores Simon Patterson, is in the Redford Community Hospital where she underwent surgery last Friday.

Mr. Glode of Middlebelt, who suffered another heart attack, was able to come home from the hospital last Monday and is reported recovering nicely.

Kimberly, Idaho, "Advertiser": "Giving blood is similar to taking out insurance. But it is more than that. For in sharing our blood, we share a part of ourselves. It is a means of reaffirming the brotherhood of man."



THE DESIGN above was done by architect Tivadar Balogh for his proposed house in Farmington. The design has won an award citation in the residential category of the fourth annual "Progressive Architecture" Design Awards Program. The editors of the magazine state that the "careful study of the vertical inter-relationship of levels in the three-story plan has resulted in an interesting sequence of architectural spaces."

Local Architect's House Plan Wins Award In National Competition

The design by architect Tivadar Balogh of 28806 Eight Mile Road, Farmington, for a proposed house in Farmington won an award citation in the residential category of the fourth annual Design Awards Program sponsored by "Progressive Architecture," national architectural magazine.

The award was presented by editor Thomas H. Creighton at an awards banquet held in New Orleans on January 18. Participants on that occasion were Dr. Walter D. Cocking, noted educator and editor of "School Executive" magazine, and Harry Weese, Chicago architect and chairman of the awards jury. The award-winning projects were selected by an eminent professional jury composed of Architects Marcel Breuer, Gordon Kaufman, Hutton Jackson and Harry Weese, and Engineer Emil H. Praeger. Sketches and plans of the award-winning buildings are featured in the January issue of "Progressive Architecture."

The "Progressive Architecture" competition is the only national architectural competition based on projects in the design stage rather than on completed buildings, it was pointed out. The editors state that many fine design and construction ideas need recognition in the period of design development rather than after completion of the building.

There were over 800 entries in the fourth annual Design Awards Program. Of these, twenty-five projects were selected to receive design awards and award citations. The Farmington house will be for the use of the Tivadar Balogh family. The site, the western slope of a hill, dictated part of the three-story plan. The lower level will contain service areas and a workshop; the living areas and master bedroom will be on the second level and the third level will consist of bedroom, bath, and work-study space. The exterior of the house will be of vertical red cedar siding.

BREAKFAST
Citrus fruit or juice, toast or sweet roll, an egg and hot beverage make a healthy breakfast combination, say Consumer Market Information spokesmen.

If breakfast is a bore, color it with pink grapefruit, cinnamon toast, and a steaming bowl of soup. For a specially busy day, serve a hearty protein food like hamburger. Study, home and office work will be easier when the day starts with a good breakfast, says the Consumer Market Information Agent, Mrs. Josephine Lawyer.

HELP FOR POULTRY?
We're Ready!
When you need flock service, we'll come "on the double." We know poultry problems and we are aware that promptness in handling them often means the difference between gain and loss. So remember us when you need help in a hurry. We do blood-testing, vaccinating, worming, culling, etc. We offer a full line of Dr. Salisbury's aids for poultry. For complete service, products, and information on poultry, call us.



when you need poultry medicine... call for

DR. SALSBURY'S

FARMINGTON MILLS

L. F. GILBERTSON, Owner
33408 State St. Farmington
Established 1883
GR. 4-3934

Michigan Mirror

(Continued from Page 2B)
struction at Monroe to operate one safely.

This reactor, called a "fast-breeder," creates more atomic fuel than it uses. Only one other has been built near Arco, Idaho. During a power test it "ran away," causing radioactivity to escape. No one was hurt, but things did get out of control.

Unions opposing PRDC contend that the cause of trouble has not been explained.

They believe that the Monroe reactor, which will be five times more powerful than any previously built, should be erected away from large population centers. The present location of the plant is 30 miles south of Detroit and 20 miles north of Toledo.

All safety problems should be overcome before operation is scheduled to begin in 1960, PRDC members claim. They point out that a second experimental breeder-type reactor is scheduled to go into operation next year. This second atomic-energy plant will provide the group with further information.

The hassle before AEC began last week and may last well into summer. Both sides are expected to present an array of scientists and scientific testimony.

Until a final decision, public atomic energy remains "on probation."

Wadena, Minnesota's "Pioneer Journalist": "As long as we taxpayers keep our hands out for government aids, the story will never change. We'll never be our own boss."

COOKING CHEESE

Be timid about heat when cooking with cheese, reminds the Consumer Marketing Information Agent, Mrs. Josephine Lawyer. Use low temperatures. High temperature on long cooking makes cheese tough and stringy. To blend cheese into other foods, grate it or cut it into small bits first; then blend with the other foods.

Covington, Tennessee, "Leader": "If people who wonder what is becoming of their money would watch themselves closely for 30 days or so, they would probably find out they are spending it."

PAINTING?
Cranston Paint Shop
8188 W. Ten Mile
Near Orchard Lake Road
GR. 4-2074

Try A Classified Ad:

everything under the sun to make your home more livable

one call does all call

for ideas materials plans

PANELING

ROOFING

SIDING

BUILDING REPAIRING REMODELING

FARMINGTON LUMBER COMPANY
32800 Grand River (R. 4-4015)

January Surprise... KING-SIZE FAMILY BUYS

AT OUR **Rexall DRUG STORE**

As advertised in Farm Journal • Town Journal • Progressive Farmer • plus Parade • This Week • and other Sunday Papers

CARA HOME HAND CREAM

More than 15 oil-free, skin-softening, emollient cream, delicately fragrant, keeps hands soft and lovely.

Large 4 1/2 oz. jar Reg. \$2.50 Special

SAVE 15¢

98¢

Rexall SUPER PLENAMINS

America's largest-selling Multi-Vitamin Product! 13 vitamins, 12 minerals in each tablet - one tablet daily supplies you with more than the minimum daily requirements of all vitamins and minerals with known minimums.

Family Bottle of 144

79¢

MENNEN SKIN BRACER

5oz.

59¢

BROWNE HAWKEYE FLASH CAMERA

With-Exel-Entel

79¢

OUR PRESCRIPTION DEPARTMENT IS THE HEART OF OUR BUSINESS

GLYCERIN SUPPOSITORIES 24's Reg. \$12. Special **.69**

REXALL HYGIENIC POWDER 16oz. Reg. \$12. Special **1.89**

HELEN CORNELL BOBBY PINS 12's Reg. \$12. Special **.19**

CARA HOME CREAMS, Special Ointments & Hand Creams, Reg. \$12. Special **.89**

REXALL BISMARX POWDER 16oz. Reg. \$12. Special **1.98**

BIG VALUE WRITING PAPER OR ENVELOPES 250's Reg. \$12. Special **.33**

TONI HOME PERMANENT REFI. 1.50

TAMPAX 30's 1.43

Plus Federal Tax on Some Items

YOU CAN DEPEND ON ANY DRUG PRODUCT THAT BEARS THE NAME **Rexall**

BRADLEY-Rexall DRUGS

GOOD HEALTH TO ALL FROM REXALL

33323 Grand River GR. 4-3123

SPECIALS

C E R N E

SALE

- Ladies' and Children's Dresses
- Ladies' and Girls' Knit Hats
- Ladies' Skirts
- Ladies' Blouses
- Children's Snow Suits
- Children's Lined Jeans
- Men's and Boys' Flannel Shirts
- Assorted Terry Towels

and Many, Many Other Assorted Odds and Ends at Real Savings

MAC'S 5c to \$5 STORE

GR. 4-4412 S. TRACEY, Owner 33317 Grand River

OPEN Friday and Saturday Evenings to 9 p.m.

Hurry In! Last Few Days!

Your Choice FREE SAVE \$100 OR MORE NOW

There's still time to get your free gift, just save \$100.00 or more with us before January 31st and take home your choice:

Carving Set. Famous Sheffield Steel carving blade, imported from England. Set consists of guaranteed stainless knife and fork, sharpener of special fast-sharpening hard steel. Marbled white handles.

Hostess Set. A heavyweight stainless steel import, hand crafted and guaranteed for 100 years! English town's lovely "Lilac Time" pattern cold meat server, salad fork and spoon and sauce or gravy ladle.

LIMIT: One Gift Per Family

Know Your LOCAL Savings Center

EARN 3% ON SAVINGS

Farmington Savings AND LOAN ASSN.

The Friendly Institution

22778 Orchard Lake Road — Now
10 Mile Road at Orchard Lake Road — Soon

HOURS 9:30 a.m. to 5 p.m. Monday through Thursday
9:30 to 7:00 p.m. Friday Open Until NOON Saturday