

Forest Management Techniques At District Meeting Recently

New techniques in forest management were studied and discussed earlier this month at a state-wide training session for Conservation Department foresters at Haven Hill Lodge, near Milford. Department employees from 15 state forestry districts and all three regional offices attended the conference, along with four representatives from the U.S. Forestry Service office at Milwaukee. Foresters devoted their attention to the latest developments in management techniques, particularly those which are useful in assisting private forest owners. State foresters regularly give technical assistance to landowners who wish to utilize good forest management methods. Many of these landowners are farmers and others with small tracts of timber, but those "smaller holdings"—100 acres or less—make up about 28 percent of Michigan's total forest land and are key potential timber producers. The Haven Hill conference also dealt with utilization and marketing of timber products, and discussion of programs which affect forestry, such as the Soil Bank and the Agricultural Conservation Program.

Gives Tips on Picking Thanksgiving Meat

Have you planned the Thanksgiving menu? Which meat to serve should be no problem, for supplies are very ample at this season, says MSU Marketing Information Agent, Mrs. Josephine Lawler. Turkeys will lead the meat list with the largest crop in history in the market. Or if your family is small, you might choose broiler or fryer chicken or a juicy pork roast.

Michigan A Leader

Second in Gravel, Sand Production

Sand and gravel production is big business in Michigan—the nation's second largest producer of these valuable materials. During 1956, a total of 42,000,000 tons of sand and gravel was produced in the state, with a value of more than \$37,000,000. Conservation Department records indicate an increase in production of about 3,000,000 tons per year since 1951 and the value of this mineral production has more than doubled since that year. Michigan sand and gravel finds its way into a variety of industrial and construction uses, particularly in road-building work. In 1955, for example, 63 percent of the state's production went into road construction and another 26 per cent was used for structural purposes. At least 80 of the state's 83 counties contribute to annual sand and gravel yield, but about two-thirds of the total production comes from seven counties—Oakland, Livingston, Wayne, Washtenaw, Macomb, Kent and Ottawa. Each of these counties produces more than 1,000,000 tons of sand and gravel annually. Commercial producers account for some 83 per cent of the total cent produced by county road commissions and other governmental agencies. A recent development in the industry is the introduction of "beneficiation" of gravel, a process which separates, screens and washes materials. This up-grading process removes objectionable chert and shale to meet specifications for highway construction work.

Happy Thanksgiving to Everyone

20-24 POUND SIZE

TURKEYS

U. S. Government inspected. Every bird is quick frozen after being completely cleaned and eviscerated. Ready for the oven.

Lb. **33^c**

10-15 Lb. Average **39^c** 16-19 Lb. Average **35^c**

PURE ALL VEGETABLE

KROGO

Shortening

Fine all-purpose, good for cooking, baking and frying. Save at this special low price.

3^{75^c}

KROGER BRAND GOLDEN

Pumpkin

Makes the best tastin' pies ever. 303: Can **10^c**

Birds Eye Mazola Oil DINNERS - TURKEY, CHICKEN, POT ROAST Each **59^c**
Gal Can **\$1.99**
White Bread 2 20-Oz. Leaves **37^c**



CREAMY-RICH COUNTRY CLUB

Ice Cream

PRICE WITH COUPON **49^c** CLIP COUPON BELOW

SAVE 20c WITH THIS COUPON ON COUNTRY CLUB

Ice Cream Price with Coupon **49^c**

Redeemable at any Kroger store. Offer expires on Sunday, November 24, 1957. Limit 1 coupon per customer.



Smoked Ham FULL SHANK HALF Lb. **43^c**
Lamb Roast SHOULDER CUT Lb. **49^c**
Sliced Bacon HYGRADE OLD FAVORITE Lb. **59^c**
Tenderay Roast STANDING RIB Lb. **79^c**

ENRICHED, ALL-PURPOSE

Kroger Flour

For all your baking needs. Save at this special low price.

5^{39^c}

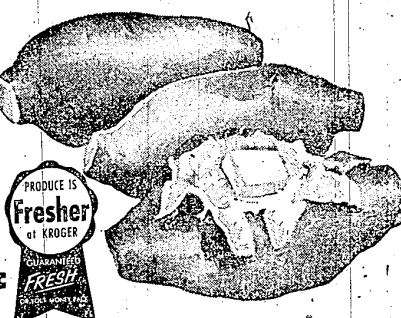
Kroger Milk EVAPORATED 8 Tall Cans **\$1.00**
Salad Dressing EMBASSY 6 Oz. Jar **33^c**
Instant Coffee SPOTLIGHT 10c OFF 6-Oz. Jar **87^c**

Borden's Milk HOMOGENIZED 1/2-Gal. Btl. **40^c**
Borden's Biscuits REG. OR BUTTERMILK Can **10^c**
Wheat Bread KROGER SLICED 2 1-Lb. Loaves **35^c**

MELLOW-SWEET, GOLDEN

Fresh Yams

Clean, good keepers. **2^{25^c}**



ALL THIS AND TOP VALUE STAMPS, TOO!

We reserve the right to limit quantities. Prices effective through Sunday, Nov. 24, 1957