

Organize to Coordinate Efforts for Retarded

A citizens committee was recently formed for the purpose of giving aid and support to the Farmington Unit of the Plymouth State Home and Training School for retarded children.

Represented at the meeting was Kendallwood subdivision, the Farmington Junior Chamber of Commerce and its auxiliary, the American Legion Auxiliary, two members from the Hospital Parents' Association, the Pontiac JC Auxiliary and the Pontiac Junior Chamber of Commerce. The latter group is working on a state level.

US Allocates \$7 1/2 Million For State Roads

The U. S. Bureau of Public Roads has allocated \$7,538,744 for use by Michigan on the secondary roads during the 1960-61 fiscal year. Highway Commissioner John C. MacIver announced recently.

The amount represents a decrease of about two per cent compared to the federal aid apportioned to Michigan during the fiscal year ending next June 30.

Of the money allocated Michigan in 1960-61, the State Highway Department will keep \$2,981,553 for work on the state's secondary road system. The remaining \$4,441,110 will be divided among the state's 83 counties.

The money is apportioned to the counties on the basis of land area, population and road mileage.

These funds must be matched by the state and county road commissions on a 50-50 basis and may be used for construction purposes only.

Under this formula, Wayne county leads the way and will receive \$614,313, followed by Oakland county, \$514,389; Kent county \$321,715, and Genesee county \$104,882.

The 1960-61 allocations for Michigan and other states were reduced because of added expenses to finance Alaska's secondary roads.

Jehovah's Witnesses - Back from Hollywood

Witnesses from the Farmington south unit have just returned from their three day Bible meet held at the Hollywood Theater where \$442 heard Peter D'Mura give a dramatic talk.

At a baptismal ceremony, Saturday afternoon, 85 delegates were baptized in the immersion pool of one of the local Kingdom Halls and will take up ministerial work with the organization.

Following the Saturday dedication of the cool film "Divine International Assembly of Jehovah's Witnesses" was shown to a capacity crowd.

Cville Adds 2nd Music Teacher

A second instrumental music instructor has been added to the Clareceville public school system, teaching staff.

Theodore Mallreus began duties in this department Monday under Alfred Panko who is in charge of the instrumental program in the system.

Increasing interest shown by students in instrumental music training during the past few years has made the need for additional help in this department necessary.

Supt. Louis Schmidt stated, Over 150 youngsters have expressed interest in instrumental music training this year and this is just two many for one instructor to handle properly, he commented.

Mallreus will have charge of the junior high band as well as giving some assistance with instrumental music training in the elementary grades.

Every car should be equipped with approved flares for wintertime stopping emergency, advises the Institute for Safer Living. In case of a stop, they should be set up well to front and rear of the car to alert passing traffic.

The hospital staff is doing a magnificent job with these children and it is only right that we in the community should help them out all our support, an official spokesman for the group commented.

Scouts Seeking Boots, Slippers

Boots and slippers are now being collected by members of Girl Scout Troop 178 to be turned over to the Plymouth Home and Training School, Farmington Branch, for mentally retarded children being cared for there.

Both booties for the babies and slippers for the children up to age nine are needed. Residents are asked to look around the storage areas in their homes for such items.

Those having such to contribute are asked to call either Mrs. J. R. Mahoney, GR 4-5386, or Lois Leach, GR 4-4959.

Glen Covells Both Get Their Bucks

Mr. and Mrs. Glen H. Cowell, 8830 Greening, returned home Monday from a successful hunting trip to Nibish Island in the Upper Peninsula.

Each bagged a buck. One was a six pointer and the other an eight pointer. A third member of their party brought down a ten point buck.

Hi/ Bike Pilots!

For real fun and exercise, bicycling's a hard sport to beat. But, it might be dangerous if you don't know and apply all of the safety rules.

Most bicycling accidents are due to just plain carelessness. Chief riding errors are:

1. Weaving in and out of traffic
2. Ignoring traffic signals
3. Carrying riders
4. Making wrong turns
5. Taking foolish chances

Smart pilots steer clear of accidents by obeying the "Rules of the Road."

Atlanta Insurance Company Safety Crusade

Zolkower's is open every night until Christmas

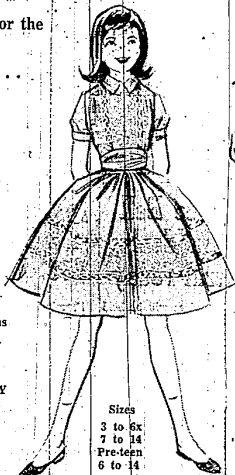
See our Wonderland of Gifts



... the gift she wants most!
pure cashmere coats
66.00

Delight in the exciting elegance of a supple cashmere coat. Fashioned to appeal to the most discriminating. Colors: Bamboo, black, and beige. Sizes 6 to 16.

fashions for the girl on your list ...



christmas dresses
3.98

TO 10.98

by such famous makers as
• LILY BEE
• YOUNGLOAN
• JACK HORNENICHT
• LITTLE STAR
• PRIM 'N PRETTY

A complete selection of styles and materials that are fun to wear, yet crease-resistant and washable. Nylons, cottons, velveteens, etc.

visit our GIFT BAR

- Nylon Tights, small, medium, large 1.00
- Wool-Nylon Gloves, Mittens 1.00
- Blouses, gaily embroidered from 1.98

girls' bulky orlon sweaters
3.99

Hi-bulk CARDIGANS with long sleeves, and design down the front. White in sizes 7 to 14.

girls' gift pajamas
2.98 and 3.98

Cottons in gay print, or a n. tailored or dainty. Dacron-Nylon-Cotton in lace trim, pastels, or gay print cotton flannel. Sizes 4 to 16.

girls' quilted dusters
3.98

Solid, with LUREX through the entire robe, or a small print on white background. Sizes 7 to 14.

Darling, you're so changeable in your "Complementals"

by **Sporteens**



The "SEVENTEEN look on a Shoestring"

It's not only fashionable... it's downright fun to swap moods and modes with "Complementals" by SPORTEENS! Be sporty... or show your velvet side... or contrast texture-with-texture for the smartest look of all! The 100% wool is a handsome houndstooth check... comes in toast-with-beige or black-with-white. The velveteen is twill-backed, deep-piled and lush; comes in toast or black. All, sizes 8 to 18.

Checked wool skirt, hip-stitched and box pleated all around 8.98
Arnel and cotton blouse, French cuffs, Peter Pan roll collar. Beige or White 4.98
Velveteen cardigan. Checked 3/4 sleeves 10.98
Velveteen skirt. Sheath-slim, with lined seat, back kick pleat 9.98
Checked wool weskit. Lined throughout 6.98
Checked wool sheath skirt. Back kick pleat, lined through seat 7.98

Use our convenient layaway — A small deposit holds

men's wash 'n wear flannel sport shirts

Just wash and hang — needs no ironing. Colorful premium patterns, permanent collar stays. Blue, red, brown, grey. S-M-L-XL.

2.67

men's genuine fur-lined leather gloves

Lined throughout with rabbit fur for real warmth. Durable capskin leather. Black, brown, grey. S-M-L.

men's heavyweight sweat shirts
1.79

Blazer stripes and neats in coat and midday styles. Sanitized shrink attractively bagged. Sizes S-M-L.

men's cotton flannel pajamas
2.77

Fleece-lined, crew neck, raglan sleeves. White, navy, maize. Hooded sweat shirts 2.79

men's "Arlex" thermal underwear
1.67 each

Shirts and drawers for outdoor men. Circular knit cloth that is amazingly soft to the skin, gives warmth without weight. S-M-L-XL.

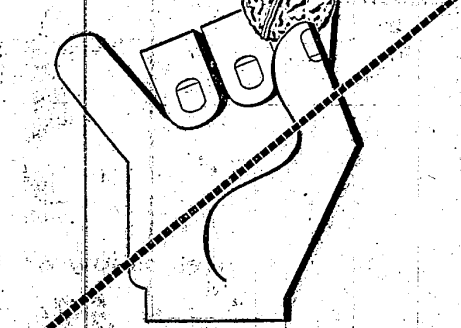
boys' cotton flannel pajamas
1.67

New colorful patterns, sanforized shrink. Permanent collar stays. Checks, plaids, solids. Sizes 6 to 18.

boys' corduroy slacks
2.67

Thickest corduroy that is guaranteed washable. Stripes, checks and plaid patterns. Sizes 6 to 12.

FOR A HUNDRED BARGAINS IN A NUTSHELL



READ YOUR LOCAL WEEKLY

Each week, your home town newspaper comes to you filled with hundreds of bargains that can aid you in making sound, economic purchases. By patronizing the local merchants who send you these advertisements, you get the extra benefits of close, convenient store locations, fast courteous service, and most importantly, by making the wise local buys you're helping to build a better community for the future. These are the best bargains of the season with most shoppers use their home town weekly as a guide for all their purchases... they know that you buy better when you buy locally.

visit santa...

FREE CANDY CANES to the Kiddies!

Santa's hours are 1 to 9 p.m. Monday through Friday... 11 a.m. to 9 p.m. Saturdays.

Visit Our DISCOUNT TOY DEPARTMENT

A really tremendous selection of toys at tremendous discounts. A small deposit holds your selection until December 20.

ZOLKOWER'S now open EVERY NIGHT until 9 p.m.

Zolkower's

31578 GRAND RIVER in Farmington Shopping Plaza
15421 SOUTHFIELD at Allen Road, Allen Park
20155 PLYMOUTH ROAD near Evergreen, Detroit
22431 MICHIGAN AVENUE near Military, Dearborn

Farmington Enterprise

YOU BUY BETTER WHEN YOU BUY LOCALLY