

Liquor License Transfer Mixup

Some confusion appears to have developed in connection with the action taken by the Farmington Township Board last week in approving the transfer of a liquor license held by the old Griffin's King of Beef restaurant-bar to a new location at 31425 Twelve Mile Road.

Since the old King of Beef establishment was located in the building now occupied by the Parker House Restaurant at 30828 Grand River some persons apparently misconstrued this action to mean that the Parker House liquor license was being transferred.

This is totally in error since

SHOP LOCALLY FIRST

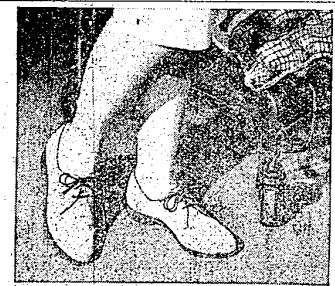
GET MORE OUT OF LIFE with GOOD VISION

You have only one pair of eyes... protect them with regular checkups here. We'll fit you with new glasses, if necessary from our wide selection of modern frames to flatter every face.

COMPLETE REPAIR SERVICE

DR. B. R. MANESS
OPTOMETRIST
Bel-Aire Professional Bldg.
10 Mile Rd. at Orchard Lake Rd.
(Opposite City National Bank)
GR. 4-1620

OFFICE HOURS
Daily 10 a.m. to 8 p.m.
Wed. & Sat. 10 a.m. to 4 p.m.



NEW! THE MOST COMFORTABLE, LIGHT-WEIGHT CASUALS EVER MADE FOR ALL DAY WEAR

Hush Puppies
BREATHER, BRUSHED PLYSKIN CASUAL SHOES BY VIOLENE

from 799

Stop lively through marketing and housework in new Hush Puppies. They breathe with your every step, and are specially "Hush-Cut" tailored to brush up like new, and to resist wear. With crepe sole, steel shank support. A delightful selection of fashion-right colors. Girls' and women's sizes.

GREG Shoes

"Children's Shoe Prescriptions Our Specialty"

Bel-Aire Shopping Center
GR. 4-9670



ARE YOU HIDING YOUR BEAUTY...?

Are your good looks hiding under a tired mop of winter-dulled hair? Let our expert stylists condition and style your hair to bring out a prettier new you. Call today for an appointment.

Coupon Worth

On Any Tint or Perm
Thurs. Only

100

HAIRCUTS

With This Coupon
Wed. Only

100

Jean's Bel-Aire Beauty Shop
ORCHARD LAKE RD. at 10 MILE RD.
BEL-AIRE SHOPPING CENTER
GR. 4-7810

OPEN EVES
Wed. - Thurs. - Fri. 'til 9 p.m.

Counseling

(Continued from Page 1-A)

various types of tests given to students by counselors, the reasons for them and the ways these test results are used in helping to advise not only the pupils but their classroom teachers as well. The varied methods used in counseling were also outlined and an explanation given on how information is given to students and faculty members regarding various vocational fields which they might be interested in learning more about. How counselors handle the orientation of pupils into junior high was likewise explained.

AT THE CONCLUSION of the report, some areas of the counseling program offered at the junior high level in which it is all improvements would be desirable were cited.

Mrs. Beck pointed out that a school accrediting agency recommends a ratio of one counselor to 300 but that the ratio at the Farmington junior high now stands at one counselor to almost 200 pupils and required a "bad press" for the school in the need for more counselors. She also cited the need for more secretarial help in the counseling departments to eliminate the need for counselors to do so much of the routine clerical work.

The need for totally enclosed "counseling conference rooms" at the various schools and larger counseling quarters at Farmington Junior High were also cited.

A number of questions raised by individual members of the board of education were answered by the various counselors present for the presentation.

Attempt to Lose Police Costly

Trying to elude a City of Farmington police car last Saturday night proved to be a "very expensive experience" for 19-year-old Gary W. Settlers of 1955 Tulane St., Farmington.

Not only did it result in substantial damage to his car but also cost him a \$100 fine and "70 in court cost when he appeared before Associate Municipal Judge Michael J. Hand on reckless driving charges.

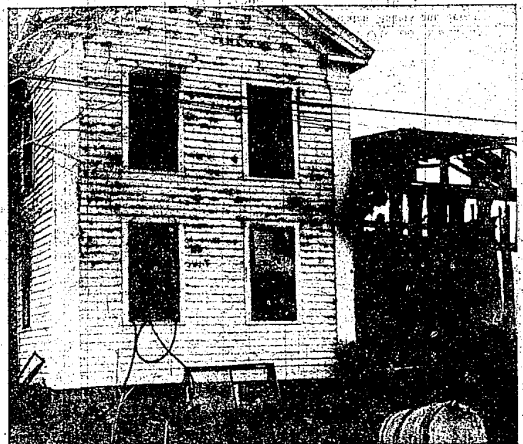
While on regular patrol shortly before midnight Saturday night officer John Butters spotted Settlers car traveling at a "high rate of speed on Grand River and gave chase. Settlers attempted to stop at the Orchard Lake Road-Grand River intersection but took off again when the light changed.

Turning on Nine Mile just a little ways beyond the Orchard Lake Road, Settlers continued to try to elude the police car. Attempting to turn again on Ruth Avenue, however, he lost control of his car and ran into the ditch. He was arrested and kept in jail overnight.

The following day he appeared before Judge Hand and was sentenced.

Every tomorrow has two handles. We can take hold of it with the handle of anxiety or the handle of faith.

—Henry Ward Beecher



THIS OLD FRAME home on Shawansee Road at Haynes Street was almost totally destroyed by fire Tuesday. Ninety-year-old Harry Smith who lived in the home alone was burned to death in the blaze. The cause of the fire has not been determined.

Map Campaign On College Vote

The Community College Citizens Committee charted final campaign plans last night (Wednesday, April 1) in the effort to win votes for the June 8 election for an Oakland County Community College.

Detailed plans for reaching voters by telephone, in speeches to organizations, through the newspapers and a radio, and through printed flyers during April and May were presented by sub-committee chairman.

Sub-committee chairman reported that letters requesting campaign fund have already been mailed to 1,700 organizations' leaders and business firms. Five thousand pamphlets outlining aims, functions and finances of a community college have been printed and distributed and 70 members of a speakers bureau have presented the case for a locally-supported, locally-controlled two-year college to area clubs and organizations.

Budget Hearing

(Continued from Page 1A)

A collecting agent for those monies. All of these monies collected are immediately assigned to established separate accounts and a total for the purpose they are specifically collected for. Township officials have no controls on the expenditure of these monies which are collected for specific services or projects, Hall asserted.

In the case of expenditures for the extension of facilities to the industrial park, the supervisor stated that it is still totally uncertain how much money will be spent during the fiscal year for this purpose. Any item in the budget for this at the present time couldn't even be guessed at, Hall stated.

Expenditures for this purpose could just not be budgeted at this time, he said.

A MR. BURGER of Old Homestead Subdivision asked why the township didn't show a surplus or contingency fund in its budget rather than expenditures exactly equaling collections. It was explained to him that while business operated this way, governmental bodies were expected to earmark and expend, as close as possible, all monies collected for community services or betterment. Other general questions about township operations raised by Burger were answered.

Since no objections to the budget as prepared were voiced, the hearing lasted less than an hour and the board voted unanimously its approval.

Mobile Office

(Continued from Page 1A)

LOWELL J. POT, assistant director of the traffic division for the state highway department, was present to discuss at length with the membership what might be done to get better identification for Farmington on the expressways running through the community. He agreed to look the present situation over thoroughly and make recommendations to the other highway official for signing improvements which would be beneficial to Farmington.

Kenneth Ekstrom, a B. of C. member and also a member of the Farmington Township Industrial Development Committee, reported on progress being made in the development of the township's industrial park. He urged members to refer officials of industrial firms that might be considering moving or expanding, to the township committee in its search for a new business.

Treasurer Richard MacPherson reported that there was \$28,578.19 in the board's treasury with only a \$2,000 commitment of this amount committed at this time.

Bell to Spend \$570,000 Here For Expansion

Michigan Bell Telephone Co. announced this week that it will be spending a total of \$570,000 in Farmington this year for the expansion and improvement of its facilities.

The local expenditure will be part of a statewide 1961 construction program of over \$33 million planned by Bell Telephone Co., Hughes C. Bronaugh, local area Bell manager, stated. He pointed out that this year's program had been increased by the company in response to the intent of the Federal Tax reduction recently passed to stimulate the economy through stepped up business activity.

In Farmington, the expansion calls for the expenditure of \$216,000 for telephone equipment, houses and offices, \$200,000 for central office equipment, \$84,000 for outside plant facilities and about \$3,000 for land and buildings.

A PART OF the improvement schedule for the year in Farmington, will include the introduction of push-button telephones on a limited basis. Farmington is one of 12 communities in the state selected to receive the push-button phones at some locations initially.

The new telephones have already been introduced in three areas so far this year and other exchanges including Farmington will get them as soon as the company can make necessary central office adapting modifications. These new phones are called Touch-Tone telephones, the very latest advance in instrument engineering and in use. With this instrument, a user taps out the numbers on buttons rather than turning it out on the conventional dial.

John Clappison Sells Insurance
Phone GR. 4-3511

Public Letter Box

Letters submitted to The Editor for publication must be signed. Names will be withheld upon request. Opinions expressed in this column are those of the writer and do not necessarily represent the policies of this newspaper. Maximum length is 100 words.

Historical Society Says 'Thank You'

To the Editor:

The Farmington Historical Society wishes to thank the Farmington City Council, the Mayor, the Manager, the Downtown Farmington Center Corporation, the Farmington Enterprise, and all interested organizations and people who have cooperated in our project. The legislature has provided that "home rule" cities may request that a hearing be conducted wherein the regulatory authorities are required to disclose, through expert witnesses, the information obtained by the engineering surveys and traffic studies. Pursuant to published Administrative Rules of Procedure, city legal representatives may question the witnesses and require that a written record of the proceedings be recorded.

sell fast when you place a quick action Enterprise classified ad.

The following 90c ad brought Mrs. O. D'Amico 29330 Barwell a buyer on the first call:

'59 FORD, 4 door, V-8, standard, \$450. Original owner. Call GR. 6-0000.

You can get the same fast results. Call GR. 4-6225.

MOTHER'S DAY IS EVERY DAY

THE GIFT THAT MOTHER CAN WEAR FOREVER

The two hand fashioned gold bands signifying father and mother are joined together by the stone* of the month for each child in the family.

With this gift of everlasting beauty a family is united on the finger of mother.

This elegant modern ring, executed in 10K or 14K white or yellow gold, expresses high fashion and mother's love.

*SYNTHETIC

	10 Kts.	14 Kts.
1 Stone	\$16.50	\$20.75
2 Stones	\$18.25	\$23.75
3 Stones	\$20.25	\$25.50
4 Stones	\$22.00	\$28.00
5 Stones	\$24.75	\$31.50
6 Stones	\$31.00	\$36.50
7 Stones	\$36.50	\$42.50

Prices Include Excise Tax

Von Burg's
Oldest Established Diamond Merchant and Jeweler in Redford
Established 1929
SAME LOCATION FOR 35 YEARS
Repairs by Expert Swiss Watch Makers and Jewelers
KE. 1-1855 22019 Grand River

St. Parking Controls Smooth Flow of Traffic on Highways

In order to keep traffic moving smoothly and safely on State trunk-line highways, it is sometimes necessary to control parking in the cities through which the highways are built. The Michigan State Highway Department has found it increasingly necessary to impose more restrictive and even prohibitory regulations on the parking of motor vehicles on State trunkline highways in cities. Many have asked by what right does the State Highway Department regulate parking on public streets within cities.

The answer is that State law requires

THE LEGISLATURE has imposed a duty upon the highway commissioner, acting jointly with the commissioner of state police, to conduct engineering surveys on State trunkline highways located within cities for the purpose of determining whether "stopping, standing or parking is dangerous to those using the highway or would unduly interfere with the free movement of traffic thereon."

Except in situations involving home rule cities parking orders made pursuant to engineering surveys and traffic studies are issued without public hearing. The legislature has provided that "home rule" cities may request that a hearing be conducted wherein the regulatory authorities are required to disclose, through expert witnesses, the information obtained by the engineering surveys and traffic studies. Pursuant to published Administrative Rules of Procedure, city legal representatives may question the witnesses and require that a written record of the proceedings be recorded.

viewed by the highway commissioner and the commissioner of state police prior to making a decision thereon.

The Michigan State Supreme Court has held such regulation of parking to be constitutional and not violative of due process of law because the "right" to park upon a public street is a privilege and not a vested right.

Wayne Man Injured When Car Rolls Over

Richard W. Croft of Wayne, Michigan, was injured Saturday afternoon when he lost control of his car and it rolled over on the Grand River Avenue Cut-Off Road near Ten Mile Road at the western edge of the township.

Croft was taken to Redford Memorial Hospital for treatment. The accident occurred at 4:10 p.m.

A penny saved is a penny earned.

FARMINGTON WATCH & CLOCK
ALL WORK GUARANTEED for ONE YEAR
33334 Grand River (Next to City Theatre)
GR. 4-0530
Your Watch Electronically Regulated FREE!
ANTIQUE CLOCKS REPAIRED

CIVIC THEATRE GR. 4-1951

NOW SHOWING—(One complete show only)—Academy Award Winning Nominee "THE CARDINAL" Tom Tryon, Carol Lynley (Show starts at 7:45 p.m.) SAT. & SUN. Shows at 5:50 and 8:50 p.m.

SAT. & SUN. MATINEE — "KONGA" (Color), and "EVERYTHING DUCKY"

STARTS WED. April 8 — "MOVE OVER DARLING"

KENN. LOOMIS INSURANCE
"Insurance For Every Need"
Personal Insurance Service to Policymakers Since 1935
CALL
KENN LOOMIS or "CEC" ROBERTS
23234 Farmington Road Farmington, Michigan
NANCY E. HEYN
GR. 4-1600
Nights GR. 4-5049
GR. 4-3978

BRENNER'S FARMINGTON HILLS MARKET
24233 Orchard Lake, Corner 10 Mile
"Farmington's Leading Independent Food Merchant"

These Box Values Below With THIS AD EXPIRES APRIL 8

JELLO PUDDINGS 11c PKGS., ALL FLAVORS	4 for 25c
ICE CREAM Paige's Special Pack	1/2 gal. 39c
MILK Farmington Dairy or Sealtest, Glass & Deposit	1/2 gal. at 29c
JELLO Assorted Flavors, 3 oz. pkgs. (44c Value)	SAVE 4 for 25c
FLOUR GOLD MEDAL of PILLSBURY, All Purpose (with \$3.00 Purchase)	5-lb. bag 39c
COFFEE Grosse Pointe Drip or Reg. (with \$3 Purchase)	lb. 49c
CAKE MIXES PILLSBURY, Assorted Large Boxes, 40c Values	25c ea.
CARROTS Cello, Bag	1-lb. pkg. 10c
BRIQUETS (Oak & Hickory)	10-lb. bag 49c
TOMATO SOUP, Heinz or Campbell's, 104 oz. can	3 cans for 25c
SUGAR, Granulated (with \$5.00 Purchase) - Present Cost 55c 5-lb. bag	49c
7 Seas Russian Dressing & 7 Others, Reg. 39c, 9 oz. bottles 1/2 Price	20c

SAVE MONEY ... NOT STAMPS

SAUERKRAUT Best 24 Can 10c	CAMPBELL'S Best 10c CAN Save 2c can With This Ad	AWREY SPECIALS Blueberry Pies 59c German Kimmel Bread 29c
GLAMORENE SPRAY STARCH TWIN PAK 79c	FARMINGTON DAIRY GRADE A HALF & HALF COFFEE CREAM PT. 19c	THURS., FRI. & SAT. Danish Pies 59c Coffee Cake 59c FRI. & SAT. Double Chocolate 7" Layer 89c
ONIONS CELLO 3-lb. bag 19c	FAYGO Fast Quart LOW-CAL SPECIAL LABEL FLAVORS This Dep. 10c	NOT WASTY Western Choice Aged BEEF Values From Iowa - U.S.D.A. Choice First Grade Round Steak - lb. 79c Sirloin Steak - lb. 89c
Choice Sirloin 30 lb. Butt All Steak 69c lb. We Will Cut and Freeze Wrap	U.S. CHOICE ARM CHUCKS For Free Brining 35c lb. We Will Cut and Freeze Wrap	WESTERN CORN FED WHOLE 10-12 lb. Avg. 10c Pork Loins 10-12 lb. Avg. 55c We Will Cut and Freeze Wrap
FROM CHOICE & PRIME STEERS STEER LIVER THIMBLED and SHINED 1 lb. 39c	U.S.D.A. CHOICE LOIN OF BEEF Extra Special 59c lb. FARM CO. lb. Cat. Only. Weat. Frozen. No Extra Charge	GROUND BEEF Our Usual High Quality 3 LBS. \$1.29
BEER, WINE & SOFT DRINKS - PROPERLY CHILLED Prices Subject to Change Without Notice PHONES GR. 6-0682 GR. 4-9808 KE. 7-4275 OPEN MON-SATUR 10 11 SUN 12-5 AMPLE FREE PARKING		