

Area Supts. Will Attend MASA Meeting

Gerard V. Harrison, Superintendent of Farmington Public Schools, will be among some 600 Michigan school administrators meeting at Mackinac Island's Grand Hotel September 13 to 15 for the annual fall conference of the Michigan Association of School Administrators.

The three-day program will open Sunday afternoon, September 13. The highlight of the first evening's program will be an observance of the centennial of the American Association of School Administrators. Dr. Dwight Rich, executive secretary of the Michigan Education Home Association and former Lansing superintendent of schools, is program chairman.

Adult Ed Offers Adult Driver Ed

For the first time in the Farmington Public Schools, Driver Education is being made available to adults.

The program being organized by Allan B. Judge, Coordinator of Driver Education for the district, is offering either classroom instruction, behind-the-wheel instruction, or both. Classroom instruction will consist of 10, one-hour sessions covering traffic laws, personal factors, and related topics. The fee will be \$10. Driving will consist of one two-hour session per week for 10 weeks for \$20. Registration will take place through the adult education office at Farmington Senior High School on Sept. 16 and 17, 6:30 p. m. to 8 p. m.

Primary Vote

(Cont'd from Page 1-A)

Peterson won out. On the Democratic ticket for the 19th District U.S. Representative nomination voters gave John H. Burke a 650 to 510 edge over Billie S. Farnum. Farnum won out over Burke in the total balloting by a vote of 10,371 to 7,736.

THE MAJORITY of Farmington's GOP voters favored James P. Dickerson for the same 19th District nomination by a one-sided 1,824 to 1,263 vote over Richard D. Kuhn but Kuhn won out handily by getting 12,832 votes to Dickerson's 11,285.

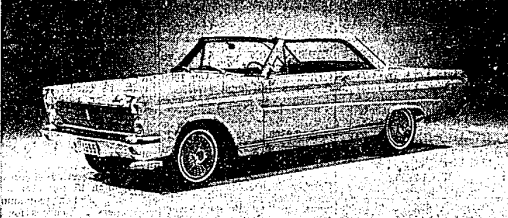
Meat grinders have a way of slipping, no matter how firmly you think you've clamped them down. It's especially hard to keep a grinder stationary if you have to attach it to a metal cabinet edge. To hold the grinder firmly in place, fold a paper towel and place it between the clamp and the cabinet. This will prevent denting or scratching the edge of the cabinet or table.



A GOLF OUTTING held recently for the employees of the National Bank of Detroit found Mr. and Mrs. Byron Lapham of Farmington (pictured above) very much in contention. Mr. Lapham is the President of NBD in Farmington. The outing was held for all of National Bank's personnel and the golfers from Farmington came off with five of the awards presented at a dinner which followed action on the links. Jim Livingstone of NBD's Farmington branch took this picture for The Enterprise.



MRS. LUCILLE DUQUETTE of Farmington is pictured above with the stars of the new "Mickey" television show which is one of the big attractions in ABC's fall line-up of family entertainment. The star, Mickey Rooney (right), and his 17-year-old son, Tim, can be seen on the new half hour TV series every Wednesday night at 8:30 p.m. Mrs. Duquette lives at 2020 Lorrick Drive in Farmington.



An entirely new appearance and major mechanical advances are presented in 1965 for the Mercury Comet—the world's durability champion. New front end sheet metal incorporates vertical headlamps, which are set off to advantage by the sleek grille. Gallente two-door hardtop, one of 11 models in Mercury Comet's three series for 1965.

Here's the General Story On the 65 Mercury Comet

For the second consecutive year, Mercury Comet—the world's durability champion—presents an entirely new appearance and major mechanical advances.

Styling of the 1965 Mercury Comet is fresh and exciting. The car is wider, yet sleeker. The sporty Cyclone series has its own distinctive grille and ornamentation.

Mechanical improvements include significant power train advances, a more responsive steering, a new electrical system, better ride and increased comfort, and new low-profile tires.

Several new exterior colors are offered for 1965, including a medium blue metallic, a dark blue metallic, and a dark turquoise metallic.

Over-all dimensions are changed only slightly, with wheelbase increasing .5 inches. Wheelbase remains at 114 inches, offering maneuverability, with the ride and handling characteristics of larger cars.

Front and sheet metal hood and fenders—are new for all models, along with new bumper, grille, vertical headlamps and ornamentation. Two- and four-door sedans have a new crisp roof, giving these models a tailored look.

Rear end sheet metal—deck lid, rear quarter panels and back panels—bumped up. Tail lamps are new for all except tail wagons.

Interior features a restyled instrument panel with all circular dials, plus exciting new trim schemes and fabrics. The Cyclone has a tachometer as standard equipment. A new collapsed time clock and vacuum gauge optional.

Series and model line-up for 1965 remains unchanged. Base series is the 202, intermediate series the 404, luxury series the Gallente, and the Cyclone. Sucker seats are available in four of the 11 models.

A new 200-cubic inch, 120 horsepower six-cylinder engine with seven main bearings is offered both with and without three-speed automatic transmission. Comet's optional three-speed dual range automatic transmission offers to a 2.88 gear ratio, offers substantial improvements in both performance and economy.

Increased V-8 performance on the 1965 Mercury Comet is offered with the 283-cubic-inch engine, an option in 1964 which becomes the standard V-8. With high-9.0 compression ratio, this V-8 is rated at 200 horsepower with a two barrel carburetor and is designed to operate on regular grade fuel.

Two optional V-8's with four barrel carburetors are offered to operate on premium fuel, a new 225 horsepower version and a high performance 271-horsepower version which powered the Comets during the 60,000 Mile Daytona Durability Test. The 225 horsepower V-8 is standard on the Cyclone. Improvements for performance and durability have been made in the 283-cubic-inch engine. An optional power transfer rear axle is available.

Steering improvements are achieved from a new manual steering linkage, a new power steering pump which is quieter and more efficient, and a reduction in the power steering ratio. An optional ride and handling system for the Cyclone includes a 21.6 to one manual steering ratio and stiffer suspension.

The electrical system begins with a 33-amp alternator which is standard, replacing the generator. Also included for 1965 are a greater capacity battery, a new electrical plug, a redesigned distributor, a new voltage regulator, new ignition cables, a new mechanical breaker light switch and new separate circuit breakers for auxiliary lamps. A new optional emergency flasher system operates all turn signals simultaneously.

Improvements in ride and comfort are obtained with softer, lower rate front springs and new materials in the sound insulation package. New low profile 6.55 x 14-inch tires provide more traction, longer tread life and less heat build-up at high speeds.

A new convenience option to improve vision is the interval selector windshield wiper and washer system which provides intermittent action for light rains and continuous wiper action for downpours. A remote-control deck lid release is optional.

Board of Ed. Inspects Bond

The Board of Education of the Farmington Public School District at a regular meeting on August 31, set a special meeting for Wednesday, August 2, to take up unfinished items on the agenda.

On Wednesday the Board met at 8 p.m. A report on heating problems at William Grace and Woodside schools was heard. The Board instructed architect, Lynn Smith, to prepare a report on cost estimates for improvement of heating in the kindergarten rooms.

Action was taken to award the contract for the proposed service and automobile building to Julian Wilson & Sons, Inc., in the amount of \$56,250.

The Board had at the Monday meeting received a report by Sigel, Layne & Schaefer, engineers, regarding cost estimates for alterations and additions needed at Bond School.

At the time the Board acted to raise the original budget from \$191,760 to \$208,000 to allow for the additional costs.

When the Wednesday meeting was held, the Board members went in a body to make an on-the-site inspection of the proposed alterations and additions to Bond School.

The Board then took action officially awarding the contract to Julian Wilson & Sons, Inc.

It was agreed to cut cards and draw "Lady Luck" make the decision. High card, a 6, was drawn by Julian Wilson, Wilson said later, "I've been in business since 1922, and this is the first time this has ever happened (identical bids) to me."

The Board then took action officially awarding the contract to Julian Wilson & Sons, Inc.

It was agreed to cut cards and draw "Lady Luck" make the decision. High card, a 6, was drawn by Julian Wilson, Wilson said later, "I've been in business since 1922, and this is the first time this has ever happened (identical bids) to me."

The Board then took action officially awarding the contract to Julian Wilson & Sons, Inc.

It was agreed to cut cards and draw "Lady Luck" make the decision. High card, a 6, was drawn by Julian Wilson, Wilson said later, "I've been in business since 1922, and this is the first time this has ever happened (identical bids) to me."

The Board then took action officially awarding the contract to Julian Wilson & Sons, Inc.

It was agreed to cut cards and draw "Lady Luck" make the decision. High card, a 6, was drawn by Julian Wilson, Wilson said later, "I've been in business since 1922, and this is the first time this has ever happened (identical bids) to me."

The Board then took action officially awarding the contract to Julian Wilson & Sons, Inc.

It was agreed to cut cards and draw "Lady Luck" make the decision. High card, a 6, was drawn by Julian Wilson, Wilson said later, "I've been in business since 1922, and this is the first time this has ever happened (identical bids) to me."

The Board then took action officially awarding the contract to Julian Wilson & Sons, Inc.

It was agreed to cut cards and draw "Lady Luck" make the decision. High card, a 6, was drawn by Julian Wilson, Wilson said later, "I've been in business since 1922, and this is the first time this has ever happened (identical bids) to me."

The Board then took action officially awarding the contract to Julian Wilson & Sons, Inc.

Contract Award Finally Decided By "Lady Luck"

A cut of the cards finally decided the winner of a \$56,250 contract for construction of a service and maintenance building for the Farmington Public School District.

At a bid opening on August 31, two identical bids were received from Gordon B. Hall & Sons, Inc. and Julian Wilson & Sons, Inc.

J. MacDonald Jacob, architect, was asked to play "Solomon" in deciding between the two companies, and report his recommendation to the Board at a special meeting on Wednesday evening, August 1.

Jacob reported that he had been unable to make a decision since both companies were equally qualified on all bases of comparison. He had then met with the two bidders in his office and declared the matter a "draw."

It was agreed to cut cards and draw "Lady Luck" make the decision. High card, a 6, was drawn by Julian Wilson, Wilson said later, "I've been in business since 1922, and this is the first time this has ever happened (identical bids) to me."

The Board then took action officially awarding the contract to Julian Wilson & Sons, Inc.

It was agreed to cut cards and draw "Lady Luck" make the decision. High card, a 6, was drawn by Julian Wilson, Wilson said later, "I've been in business since 1922, and this is the first time this has ever happened (identical bids) to me."

The Board then took action officially awarding the contract to Julian Wilson & Sons, Inc.

It was agreed to cut cards and draw "Lady Luck" make the decision. High card, a 6, was drawn by Julian Wilson, Wilson said later, "I've been in business since 1922, and this is the first time this has ever happened (identical bids) to me."

The Board then took action officially awarding the contract to Julian Wilson & Sons, Inc.

It was agreed to cut cards and draw "Lady Luck" make the decision. High card, a 6, was drawn by Julian Wilson, Wilson said later, "I've been in business since 1922, and this is the first time this has ever happened (identical bids) to me."

The Board then took action officially awarding the contract to Julian Wilson & Sons, Inc.

It was agreed to cut cards and draw "Lady Luck" make the decision. High card, a 6, was drawn by Julian Wilson, Wilson said later, "I've been in business since 1922, and this is the first time this has ever happened (identical bids) to me."

The Board then took action officially awarding the contract to Julian Wilson & Sons, Inc.

It was agreed to cut cards and draw "Lady Luck" make the decision. High card, a 6, was drawn by Julian Wilson, Wilson said later, "I've been in business since 1922, and this is the first time this has ever happened (identical bids) to me."

The Board then took action officially awarding the contract to Julian Wilson & Sons, Inc.

It was agreed to cut cards and draw "Lady Luck" make the decision. High card, a 6, was drawn by Julian Wilson, Wilson said later, "I've been in business since 1922, and this is the first time this has ever happened (identical bids) to me."

The Board then took action officially awarding the contract to Julian Wilson & Sons, Inc.

It was agreed to cut cards and draw "Lady Luck" make the decision. High card, a 6, was drawn by Julian Wilson, Wilson said later, "I've been in business since 1922, and this is the first time this has ever happened (identical bids) to me."

Band Director Hospitalized

Robert Zimmerman, band director at Farmington Senior High School, is in critical condition in Old Grace Hospital, Detroit, as a result of injuries suffered in an automobile accident at Seven Mile and Beach Day roads in Redford Township, Friday, September 4.

Mr. Zimmerman's daughter, Ann, 9-year-old, a teacher in the high school from their home at 17233 Kinloch Avenue in Redford Township, Mr. Zimmerman, 37-year-old, a teacher in Farmington for more than 10 years, was scheduled to distribute band uniforms on Friday.

The band director's wife, Betty, reported that although his condition was much improved Tuesday afternoon no visitors were being allowed.

WANT ADS are STAR SALES MEN

HAIRCUTS \$1.00

LIMITED Mon, Tue, Wed only

Dick & Jerry's Hair Fashions

25748 Grand River nr. Beech KE 7-8440 Open Eve's

EVERGREENS \$1.95

All Kinds - Spreaders, Globes, Pyramids from 12 ACRES of HARDY GROWING STOCK

Greenway Acres Nursery

35150 W. 8 Mile Rd. GR. 6-2330 or KE. 4-2832 1 Mile West of Farmington

Players to Bow To Farmington This Weekend

The Farmington Players will bow to the residents and merchants of the Farmington area in two separate performances of "The Taming of the Shrew" this weekend at the Players Barn, 3232 12 Mile Road.

On Saturday evening, the public has been invited to a special performance beginning at 8:00. An open house follows. All residents are invited to attend and get acquainted with the Players.

On Sunday evening, another performance and open house will be given for merchants and business people in Farmington. Special invitations were sent to as many as possible, but it was emphasized that all business and professional people are invited to this performance even though they may not have received invitations.

"The Taming of the Shrew" was selected in honor of Shakespeare's birthday, and a special adaptation has been prepared by Robert Casanova. Leads for the production are "Katherine the Shrew," Dorothy Miller, "Petruccio," who tames the Shrew, president of the Players, Don Craig, "Bianca," Katherine's sister who is not permitted to get married to Kathyrn Korneresser, and "Lucezio," who eventually marries Katherine, Dennis Broadhead.

Each year the Players have held an open house, but this year they wanted to do a little more to show their appreciation to the citizens and merchants of the Farmington area, and according to Kathryn Korneresser, "The red carpet is out for everyone this year."

Urban, suburban and rural boys work together in 4-H Clubs. They have a choice of nearly 50 projects ranging from electricity to livestock.

Regular memberships are \$1, sustaining memberships \$5 and contributing memberships \$10. Council members also will be at the shopping areas on Saturday, Sept. 19, and announcements will be made in all churches in Farmington Sunday, Sept. 20.

Persons wishing to affiliate with 4-H may do so by contacting the council secretary, Mrs. Joan Smith, 31838 Staman Circle, GR. 4-8292.

The council's next general meeting will be held at St. Francis Church, Twelve Mile near Farmington Road, at 8 p.m. Sept. 22. The session will be open to the public.

Dairy Queen Broken Into

The Hotchkiss Dairy Queen at 3232 Grand River Avenue in Downtown Farmington was broken into during the evening of September 7 by what appeared to be as many as possible vandals.

A chunk of concrete had been used by the youths to break a plate glass window in the front of the building to gain entry.

A cash box containing \$25 was broken into by the vandals who were apparently satisfied with making some sundae and taking 12 quarts of T.O.P. They left the place untouched.

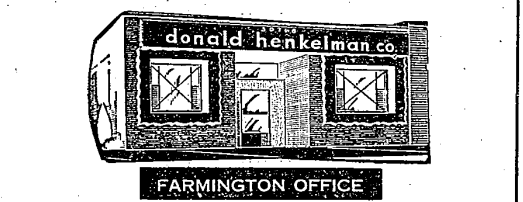
Award Editor Merit Citation

The American Legion Citation for Meritorious Service was presented last week by the Groves-Walker Post 346 of Farmington to Thomas F. Isley, editor of the Farmington Enterprise.

The presentation was made by Post Commander of the Groves-Walker Post, Leonard T. Holton, at an awards program held Thursday evening, September 3, in the American Legion Hall in Farmington.

The Citation was awarded to Isley for his meritorious recognition of "meritorious service and loyal cooperation" in community affairs.

Serving Farmington...



2 modern offices plus a sales staff of over 20 people, combined with extensive newspaper, television and direct mail promotion enables a step-by-step marketing and merchandising procedure to insure the best possible results.

The Donald Henkelman Co. is a member of the American Institute of Marketing Systems, United Northwestern Realty Association, The Detroit Real Estate Board, National Association of Real Estate Boards, Better Business Bureau, qualified FHA and VA approved brokers, franchised brokers for The Relocation Finance Corporation for families moving from city to city.

donald henkelman co.

Detroit Office 20356 GRAND RIVER KE. 8-4422

Farmington Office 30768 GRAND RIVER GR. 6-6161

REAL ESTATE 2 CONVENIENT LOCATIONS

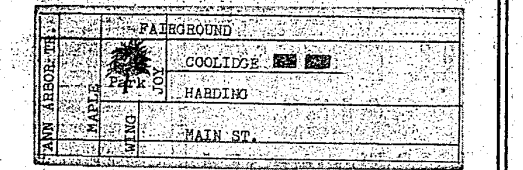
WORTH LOOKING INTO JAMESTOWN COURT APTS.

NOW UNDER CONSTRUCTION SEPT. OCCUPANCY

Have 16 large 1 bedroom living units (with quality construction and sound controlled features). Every unit is completely air conditioned, has a garbage disposal and appliances by General Electric. All units have private porches. Within walking distance of downtown Plymouth.

PHONE GR 4-9029 for applications and further information on why these apartments are . . .

WORTH LOOKING INTO YOUR GUIDE TO LUXURY LIVING



SECHLER & BIDWELL DEVELOPMENT COMPANY

GR 4-9029

BEST HOME BUYS BEFORE YOUR EYES STOP AND SHOP DAILY 9-9; SUNDAY 12-5

GORDON WILLIAMSON GALLERY OF HOMES

28777 Orchard Lake Rd. GR. 4-7177

MAYFIELD . . . On 80x109 ft. lot in City of Farmington, face brick 3 bedroom ranch with two natural fireplaces, one in rear carpeted living room with entry to screened terrace, another in tiled rec. room complete with powder room, family kitchen, paneled dining area, terrace, 2 car attached garage. \$26,500.

MINGLEWOOD . . . In beautiful Glenbrook Subdivision, face brick 3 bedroom ranch, separate dining room, paneled family room with raised herring fireplaces, 2 full baths, convenient lav, spacious kitchen with built-ins, 2 car attached garage. \$23,900.

BAINTREE . . . A real charmer, choice location in Kendallwood, face brick ranch with 3 bedrooms, rear carpeted living room and dining "L", fireplace, window wall to terrace, 2 bedrooms, 2 full baths, family kitchen, built-ins, divided basement, 2 car attached garage. \$26,500.

BUDGET DELIGHTS

DOREEN . . . Corner lot with 7 beautiful shade trees, face brick 3-bedroom, bath and 1/2, ranch, full basement, gas heat. Quick occupancy; owner transferred. \$15,700.

MARBLEHEAD . . . On so sharp, brick 3 bedroom ranch on beautifully landscaped 58x118 lot, delightful 17x12 covered patio, gas heat, 2-car garage. \$16,990.