



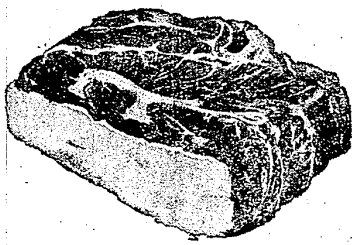
# "Super-Right" Mature, Corn-Fed Beef

## CHUCK ROAST

Blade Cut

# 39<sup>c</sup>

lb



GOVERNMENT INSPECTED

### GRADE "A" POULTRY

4 to 9 LB. SIZES  
**Turkeys** } YOUR CHOICE  
4 to 5 LB. SIZES  
**Roasters** } **39<sup>c</sup>** lb  
4 to 5 LB. SIZES  
**Ducks** }

Arm Cut **49<sup>c</sup>** lb  
English Cut **59<sup>c</sup>** lb

### "SUPER-RIGHT" BONELESS BRISKET

**Corned Beef**  
Flat Cut **69<sup>c</sup>** lb  
Point Cut **59<sup>c</sup>** lb

New Green Cabbage lb. 10<sup>c</sup>

## "Super-Right" PORK LOINS

Full 7-Rib Portion **29<sup>c</sup>** lb  
Loin End Portion **39<sup>c</sup>** lb

Whole or Rib Half  
**Pork Loins** lb. **45<sup>c</sup>**

**PORK CHOPS**  
Center Rib Cut **69<sup>c</sup>** lb  
Center Loin Cuts **79<sup>c</sup>** lb

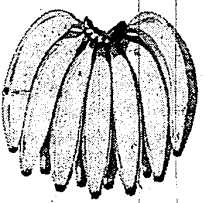
A&P GRADE "A"  
**APPLE SAUCE**  
**4** 1-LB. 9-OZ. JARS **99<sup>c</sup>**

"Super-Right" Quality  
**ALL-BEEF HAMBURGER**

3-LB. PKG. OR MORE **45<sup>c</sup>** lb  
Lesser Amounts **49<sup>c</sup>** lb

"SUPER-RIGHT" COUNTRY-STYLE Spare Ribs **39<sup>c</sup>** lb  
OGAR MEAT SKINLESS All-Meat Franks **59<sup>c</sup>** 1-LB. PKG.  
"SUPER-RIGHT" Boneless Chuck Roast **69<sup>c</sup>** lb  
"SUPER-RIGHT" LEAN STRIPS OR GROUND Stewing Beef **69<sup>c</sup>** lb  
MEDIUM SIZE Shrimp PEELLED AND DEVEINED **39<sup>c</sup>** 3 LB. PKG.  
CAPN JOHN'S Breaded Shrimp **179** 2 LB. PKG.  
OCEAN PERCH, FROZEN Fillets **35<sup>c</sup>** 4-LB. BOX

## No Coupons, No Gimmicks, No Limits... Just Quality Merchandise at Low Prices!



# BANANAS

Feature Value! **10<sup>c</sup>** lb

TENDER YOUNG SHOOTS  
**Broccoli** . . . . . BUNCH **29<sup>c</sup>**  
FRESH, WASHED  
**Spinach** . . . . . 10-OZ. BAG **19<sup>c</sup>**

**LIKE GOOD COFFEE?**  
Try A&P whole-bean coffee. It's fresher... better... thriftier!

1-LB. BAG **73<sup>c</sup>** 3-LB. BAG **213**

RICH AND FULL-BODIED  
**RED CIRCLE** 1-LB. BAG **75<sup>c</sup>** 3-LB. BAG **219**  
VIGOROUS AND WINNY  
**BOKAR** 1-LB. BAG **77<sup>c</sup>** 3-LB. BAG **225**

IT'S NATIONAL PEANUT WEEK!  
Our Finest Quality—Ann Page  
**Peanut Butter**  
Creamy Smooth or Krunchy **59<sup>c</sup>** 1-LB. 8-OZ. JAR

IN THE SHELL  
**Roasted Peanuts** 1-LB. BAG **39<sup>c</sup>**  
EXCELL BRAND  
**Red Skin Peanuts** 1-LB. BAG **39<sup>c</sup>**

Worthmore Peanut Clusters or Chocolate Covered Peanuts  
YOUR CHOICE **3** 7 1/2-OZ. PKGS. **1<sup>00</sup>**

DUNCAN SEEDED  
**Grapefruit** 54 SIZE **3 FOR 29<sup>c</sup>**  
WESTERN RED DELICIOUS  
**Apples** 113 SIZE **10 for 59<sup>c</sup>**

NEW TWIN PACK—JANE PARKER  
**Homestyle Donuts**  
Plain or Sugared **2** PKGS. OF 6 IN CTN. **49<sup>c</sup>**

SAVE 11c ON 2 LOAVES—JANE PARKER  
**Potato Bread** 2 1-LB. LOAVES **39<sup>c</sup>**  
SAVE 10c—JANE PARKER 1-LB., 8-OZ.  
**Pumpkin Pie** 6-INCH SIZE **49<sup>c</sup>**  
Hot Cross Buns JANE PARKER 10 1/2-OZ. LIGHTEN FAVORITE PKG. OF 8 **39<sup>c</sup>**  
Crescent Pound Cakes JANE PARKER 15-OZ. MARBLE HALF RING **35<sup>c</sup>**  
Glazed Danish Ring JANE PARKER 1-LB. COFFEE CAKE SIZE **65<sup>c</sup>**

GOLD DEODORANT  
**Palmolive Soup** REG. BAR **14<sup>c</sup>**  
Bright Sail Bleach 5 1/2% Sodium Hypochlorite GALLON PLASTIC **43<sup>c</sup>**  
Simoniz Vinylwax . . . . . QT. **89<sup>c</sup>**  
Simoniz Vinylwax . . . . . 1/2 GALL. SIZE **159**  
Woodbury Soap WITH PURCHASE OF AT REG. PRICE 6 HANDED BARS **45<sup>c</sup>**  
Puffin Biscuits JUST BAKE AND SERVE TUBE OF 19 **10<sup>c</sup>**

IONA YELLOW CLING  
**PEACHES**  
Sliced or Halves  
**4** 1-LB. 13-OZ. CANS **95<sup>c</sup>**  
SULTANA  
**Fruit Cocktail** 5 1-LB. CANS **99<sup>c</sup>**

A&P GRADE "A"  
**Grapefruit Juice** . . . . . 3 1-QT. 14-OZ. CANS **89<sup>c</sup>**  
SWANSDOWN LAYER  
**Cake Mixes** . . . . . 3 1-LB. 1-OZ. PKGS. **79<sup>c</sup>**  
ANN PAGE  
**Elbow Macaroni** . . . . . 3 2-LB. PKGS. **1<sup>00</sup>**

YOUR CHOICE . . . AT SAVINGS  
A&P Grade "A" Mlx. Sizes | A&P Grade "A" Wh. Kernel  
**Sweet Peas** | **Golden Corn**  
A&P GRADE "A" CUT | IONA BRAND  
**Green Beans** | **Tomatoes**  
**4** 1-LB. CANS **59<sup>c</sup>**

OUR FINEST QUALITY!  
Light Chunk Style  
**A&P Tuna**  
**4** 6 1/2-OZ. CANS **89<sup>c</sup>**  
COLDSTREAM PINK  
**Salmon** . . . . . 2 1-LB. CANS **89<sup>c</sup>**

ALL PURPOSE  
**GOLD MEDAL Flour**  
**5** LB. BAG **49<sup>c</sup>**  
ALL PURPOSE FLOUR  
**Sunnyfield** 5 LB. BAG **39<sup>c</sup>**

PREMIUM QUALITY  
**A&P Instant Coffee** . . . . . 10-OZ. JAR **1<sup>19</sup>**  
LARGE OR SMALL CURD—A&P  
**Cottage Cheese** . . . . . 2 1-LB. CTNS. **49<sup>c</sup>**  
FOR COOKING OR SALADS  
**dexola Oil** 7c OFF LABEL . . . . . 1-QT. 6-OZ. BTL. **48<sup>c</sup>**

CHERIO CHOCOLATE COVERED  
**Ice Cream Bars** . . . . . 12 IN PKG. **49<sup>c</sup>**  
CHOCOLATE, 6-OZ. PKG.—VANILLA, 4 1/2-OZ. PKG.  
**Ann Page Puddings** . . . . . YOUR CHOICE **10<sup>c</sup>**

15c OFF—GIANT SIZE  
**Silver Dust** Blue Detergent  
2-LB. 6-OZ. PKG. **64<sup>c</sup>**  
**Vim Tablets** 10c OFF—GIANT 2-LB. PKG. **57<sup>c</sup>**  
**Praise Soap** 10c OFF ON 2 BATH BARS **33<sup>c</sup>**  
**Dove Liquid** 15c OFF LAR 1-LB. KING SIZE 2 QUART PLASTIC **55<sup>c</sup>**

**Swan Liquid** KING SIZE 15c OFF LABEL. QUART PLASTIC **65<sup>c</sup>**  
**Final Touch** FABRIC SOFTENER 1-QT. 15c OFF **67<sup>c</sup>**  
**Handy Andy** 10c OFF LABEL 1-PT. 6-OZ. **45<sup>c</sup>**  
**Fluffy all** GIANT . . . . . 2-LB. PKG. **75<sup>c</sup>**  
**Active all** GIANT . . . . . 2-LB. PKG. **71<sup>c</sup>**  
**Dishwasher all** LARGE . . . . . 1-LB. 4-OZ. PKG. **39<sup>c</sup>**  
**Coldwater all** 10c OFF KING SIZE. QT. **63<sup>c</sup>**

**A&P Super Markets**  
THE GREAT ATLANTIC & PACIFIC TEA COMPANY, INC.  
AMERICA'S DEPENDABLE FOOD MERCHANT SINCE 1859  
Prices Effective through Sat., March 13th in all Eastern Michigan A&P Super Markets