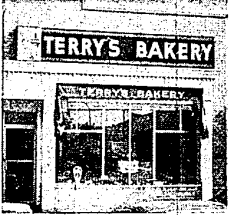


Let's Get Acquainted . . . during PLYMOUTH FALL FESTIVAL DAYS

It has been our pleasure to serve the many people in this area for many years . . . We are always ready to make new friends with our Baked Goods.



We specialize in WEDDING & BIRTHDAY CAKES. Try our Delicious Home Recipe Breads, Cakes and Pastries

TERRY'S BAKERY

880 W. Ann Arbor Trail GL 3-2161

Fall Festival Schedule of Events

THURSDAY, SEPT. 8
 B.P.W.—German Night, 4:49 p.m., Kellogg Park.
 Larson—Dab Art, 5:9 p.m., Kellogg Park.
 Sparks & Busch—Portrait Sketching, 4:9 p.m., Kellogg Park.
 Plymouth Theatre Guild—Cotton candy and pop, 4:9 p.m., Kellogg Park.
 Y.M.C.A. Indian Guides—Popcorn, 4:9 p.m., Kellogg Park.
 Soroptimists—Cider and Donuts, 4:9 p.m., Kellogg Park.
 Stroll Musicians—Instrumental, 4:6 p.m., Kellogg Park.
 Wilhelm and His Sour Krauts—German Band, 6:9 p.m., Band Shell.
 Costume Judging—7:30-8 p.m., Band Shell.

FRIDAY, SEPT. 10
 Lions—Ice Cream-Melton Social, 4:9 p.m., Kellogg Park.
 B.P.W.—Cook Books, 4:9 p.m., Kellogg Park.
 Larson—Dab Art, 5:9 p.m., Kellogg Park.
 Sparks & Busch—Portrait Sketching, 4:9 p.m., Kellogg Park.
 Plymouth Theatre Guild—Cotton candy and pop, 4:9 p.m., Kellogg Park.
 Y.M.C.A. Indian Guides—Popcorn, 4:9 p.m., Kellogg Park.
 Soroptimists—Cider and Donuts, 4:9 p.m., Kellogg Park.
 Beta Sigma Phi—Fudge, 5:9 p.m., Kellogg Park.
 Plymouth Sym. League—Antique Mart, 12:10, Comm. Ctr.
 Sweet Adelines—Aprons, Sewing Baskets and Plant Holders, 4:9 p.m., Kellogg Park.

SATURDAY, SEPT. 11
 Kiwanis—Pancake Feed, 7-7 p.m., Masonic Temple.
 Optimists and Recreation Dept.—Pet Show, 9:12, Parking Lot 2B
 B.P.W.—Cook Books, 12:9 p.m., Kellogg Park.
 Larson—Dab Art, 12:9 p.m., Kellogg Park.
 Sparks & Busch—Portrait Sketching, 12:9 p.m., Kellogg Park.
 Y.M.C.A. Indian Guides—Popcorn, 11:9 p.m., Kellogg Park.
 Soroptimists—Cider and donuts, 12:9 p.m., Kellogg Park.
 Beta Sigma Phi—Fudge, 10:9 p.m., Kellogg Park.

SUNDAY, SEPT. 12
 Red Ace—Ballooning, 1:4 p.m., Park Area.
 Homestead Five—Folksingers, 6:1 p.m., Band Shell.
 Harmonicas—Instrumental, 7-7:30 p.m.; 8-8:30 p.m., Band Shell.
 Banjo Pals—Instrumental, 8:30-9 p.m.; 9:30-10 p.m., Band Shell.

Entertainment
 Detroit Edison—Calliope, 1:7 p.m., Park Area.
 Red Ace—Ballooning, 1:4 p.m., Park Area.
 Homestead Five—Folksingers, 6:1 p.m., Band Shell.
 Harmonicas—Instrumental, 7-7:30 p.m.; 8-8:30 p.m., Band Shell.
 Banjo Pals—Instrumental, 8:30-9 p.m.; 9:30-10 p.m., Band Shell.

Entertainment
 Detroit Edison—Calliope, 1:7 p.m., Park Area.
 Red Ace—Ballooning, 1:4 p.m., Park Area.
 Homestead Five—Folksingers, 6:1 p.m., Band Shell.
 Harmonicas—Instrumental, 7-7:30 p.m.; 8-8:30 p.m., Band Shell.
 Banjo Pals—Instrumental, 8:30-9 p.m.; 9:30-10 p.m., Band Shell.

Enjoy FALL FESTIVAL DAYS with Us

Hugh Jarvis Gifts

We Feature a Wide Selection of DISTINCTIVE GIFTS

Two Fine Locations to Serve You in Plymouth

Hugh Jarvis Gifts

852 W. Ann Arbor Trail, Plymouth
GL 3-0656

The Lampost Gifts

41661 Plymouth Road at Hillside Inn

Melody House

770 PENNINGMAN AVE. PLYMOUTH, MICH. GL 3-4580

for the largest selection of Hi-Fi and Stereo Albums in Western Wayne County

Welcome TO PLYMOUTH FALL FESTIVAL DAYS

SHEET MUSIC - TAPE RECORDERS - GUITARS PORTABLE PHONOGRAPHS

The Plymouth Fall Festival is a wonderful experience.

- Ames—Shower Curtains
- Calloway—Towels
- Enrich—Closet Acc.
- Tennessee Tufting—Rugs
- George Koly & Sons—Shelves and Benches
- Breartley Co.—Scales
- Ronsburg—Basket and Shelf Accessories
- Many more boutique items

For a completely new experience in shopping for your "personal world" stop in and browse through our unique Bath & Boudoir Shop

Sharrard's Bath & Boudoir Shop

942 W. Ann Arbor Trail Plymouth, Michigan Phone GL 3-2510

22443 Michigan Ave. DEARBORN—274-2516—Military at Michigan

Store Hours: Plymouth, Mon. thru Sat. 9:30-5:30 P.M. and Sun. 11-4 P.M. Dearborn, Tues. thru Sat. 9:30-4:30 Mon. and Sat. 11-4 P.M.

Enjoy the Plymouth Community FALL FESTIVAL DAYS

SAXTONS GARDEN CENTER

587 W. Ann Arbor Trail, facing Kellogg Park Plymouth GL 3-6250

- WE SELL • WE SERVICE • WE DELIVER
- FERTILIZERS • INSECTICIDES • BULBS
- PET SUPPLIES FOR DOGS AND CATS
- GARDEN & LAWN TOOLS & SUPPLIES
- BOLENS—TORO—LAWN BOY—SIMPLICITY & OTHERS

It's FALL FESTIVAL TIME in Plymouth

Davis & Lent

Father & Son Store

Behind This Store Front . . . You'll find men's and boys' new fall fashion clothing . . . In a completely remodeled store from top to bottom . . . Make it a must to visit with us during the FALL FESTIVAL DAYS.

- MEN'S SHOP • TEEN SHOP • BOYS' SHOP

DAVIS & LENT

FATHER & SON STORE

336 S. Main Street GL 3-5260

PARKING AT REAR OF STORE

Be Sure and See our FALL FESTIVAL Specially Decorated Windows

You Name Them . . . We Have Them

WOMEN'S DEPT.
 KNITS—Talbot, Fairfield, (Gorland), Catalina, Colby, Roman Stripe and Kimberly.
 DRESSES—Berkshire, Puritan, Parkshire, Clair Tiffany, Mar-to "D", Kay Windsor, Mr. McIvor, Jertie Laurie.

FOUNDATION DEPT.
 Gossard, Maiden Farm, Warner, Vassarette, Fortuna, Form-fit, Permo-Lift, Sarong, Fashionhour, Playtex.

CHILDREN'S DEPT.
 Dresses by Cinderella and Kate Greenaway, Pandora—Knits, Jeanies, Denny Dore, Lewis, Carter underwear.

YARD GOODS DEPT.
 Kaplan Woolens, Rosewood, A.B.C., Crompton Corduroy and other famous brands.

SPECIAL TRUNK SHOWING. Pick from Samples PRINTRESS COATS Friday, 10th. Save 10%!

DUNNING'S

Womens, Childrens, Infants, Yard goods

500 Forest Ave. Plymouth GL 3-0080

Welcome to PLYMOUTH FALL FESTIVAL

DRIVE -- IN

THE NEW Cracker Barrel

40522 Ann Arbor Trail, near Heggerly Plymouth GL 3-9795

formerly BARTOLO'S

Now Owned and Operated by GARY SENICK

- Package Liquor • Champagne
- Complete Party Supplies • Cooler Rentals
- Barrel Beer always on hand

STOP IN and SEE OUR ANTIQUE COLLECTION on the Ceiling and Walls . . . Takes you back to the Cracker Barrel Days.

ROY'S SQUEEZE INN

HAMBURGERS

Corner South Main at Hartsough Plymouth GL 3-8121

While you visit Plymouth FALL FESTIVAL DAYS . . . STOP and have a Cold Drink or Hamburger.

- SQUEEZE BURGER 50c
 1/2 lb. Ground Beef, Sesame Bun, Lettuce, Tomato
- DINNERS, Chicken, Shrimp, Fish 69c ea.
- HAMBURGERS 15c and 25c
- Milk Shakes 19c • French Fries 15c

OPEN 10 A.M. TO 2 A.M. — SUNDAYS 11 A.M. - 1 A.M.

Beitner's

WE SPECIALIZE IN . . . Fine Diamonds—Watches Jewelry—Pearls—Silver Pewter—Wallclocks

Complete watch & Jewelry Repair

Beitner's

fine jewelry

904 W. ANN ARBOR TRAIL GL 3-2715

As we watch Plymouth grow . . . it gives us great pleasure to meet our many friends and customers at this big Plymouth event . . .

"PLYMOUTH FALL FESTIVAL DAYS"

Serving Plymouth Area Since 1900 with a complete line of building supplies

- LUMBER • CONCRETE • GULF FUEL OIL

3 COMPANIES TO SERVE YOU

McLAREN COMPANY

McLAREN TRANSIT MIX CO.
 McLAREN SILKWORTH OIL CO.

305 N. MAIN PLYMOUTH GL 3-3232

For Your FALL FESTIVAL PHOTOGRAPHY

... See us for Film Accessories Cameras

"Plymouth's Exclusive Camera Shop Since 1945"

RESPECTED FOR QUALITY AND SERVICE

THE PHOTOGRAPHIC CENTER

An Approved Camera Shop GL 3-5410

882 W. Ann Arbor Trail, Plymouth

while attending PLYMOUTH FALL FESTIVAL

See... Nationally known silhouette artist KAY HOUSEL demonstrate her skill with the scissors and paper in our window.

SHERWIN-WILLIAMS PAINTS

863 PENNINGMAN Opposite Post Office

We're ready to serve you during PLYMOUTH FALL FESTIVAL

Graham's

GRAHM'S "Fall Village" Shop is open . . .

FEATURING:

- Villager
- John Meyer of Norwich
- Jantzen
- Evan Picone
- Pandora
- Gino Paoli
- Jack Winter

Fashions with imagination dedicated to the sweet young individual who is synchronized to the new fashion tempo of the day . . . a marvelous selection of fall fabrics and colors . . . in Graham's classic understated look.

Graham's

SUBURBAN CASUALS

W. ANN ARBOR TRAIL PLYMOUTH