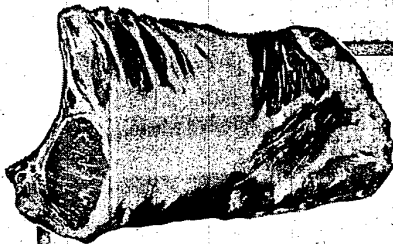




"SUPER-RIGHT" 4 TO 6-LB. SIZES  
**Smoked Picnics**  
 LB. **39<sup>c</sup>**



**Special Sale!**  
**"Super-Right"**

**PORK LOINS**

Full 7-Rib Portion

Loin End Portion

**35<sup>c</sup>**  
 lb

**45<sup>c</sup>**  
 lb

**KING OF ROASTS!**  
 "Super-Right" Mature, Corn-Fed Beef

**Standing Rib Roast**



4th and 5th Ribs **79<sup>c</sup>** lb.  
 First 5 Ribs **85<sup>c</sup>** lb. First 8 Ribs **89<sup>c</sup>** lb.

"SUPER-RIGHT" 6-INCH CUT

**Beef Rib Steaks . . . 89<sup>c</sup>**

- GOVERNMENT INSPECTED **Fresh Fryers** WHOLE PAYERS LB. **29<sup>c</sup>**
- "SUPER-RIGHT" COUNTRY STYLE **Spare Ribs** LB. **49<sup>c</sup>**
- SWIFT'S PREMIUM **All-Meat Franks** 1-1/2 PKG. **59<sup>c</sup>**
- "SUPER-RIGHT" **Beef Short Ribs** . . . LB. **43<sup>c</sup>**
- "SUPER-RIGHT" SLICED **Beef Liver** . . . . . LB. **49<sup>c</sup>**
- PEELED AND DEVEINED **Medium Shrimp** . . . . . PKG. **39<sup>c</sup>**

**PORK CHOPS**

CENTER RIB CUT **79<sup>c</sup>** lb. CENTER LOIN CUT **89<sup>c</sup>** lb.

**Whole or Rib Half PORK LOINS**

**55<sup>c</sup>** lb

**No Coupons, No Gimmicks, No Limits . . . Just Quality Merchandise at Low Prices!**

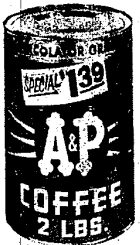
**Every-Day Low Prices**


- ANN PAGE LAYER **Cake Mixes** . . . . . 1-LB. 2-OZ. PKG. **25<sup>c</sup>**
- ANN PAGE—NET WT. 13 1/4-OZ. **Frosting Mixes** . . . . . PKG. **25<sup>c</sup>**
- APP—OUR FINEST QUALITY **Drink** \*Pineapple-Grapefruit 3 1-QT. 14-OZ. CANS **79<sup>c</sup>**
- LIBBY'S **Tomato Juice** . . . 3 1-QT. 14-OZ. CANS **89<sup>c</sup>**
- "SUPER-RIGHT"—NET WT. 13 1/4-OZ. **Chili with Beans** 3 CANS **79<sup>c</sup>**
- SALAD DRESSING **Miracle Whip** . . . . . 1-PT. JAR **49<sup>c</sup>**
- DEL MONTE **Fruit Cocktail** . . . 4 1-LB. CANS **99<sup>c</sup>**
- BALL-DOME **Canning Lids** . . . . . 2 PKGS. OF 12 **31<sup>c</sup>**
- BALL—WITH VACUUM SEAL LIDS **Caps and Lids** . . . . . PKG. OF 12 **33<sup>c</sup>**
- FOR CLEANING ROTS AND PANS **Chore Girl** . . . . . 3-CT. PKG. **25<sup>c</sup>**
- SAVE AT A&P! **Golden Fleece** . . . . . 3-CT. PKG. **23<sup>c</sup>**
- CUT-RITE **Waxed Paper** . . . . . 125 FT. ROLL **23<sup>c</sup>**
- READY TO BAKE **Pillsbury Biscuits** . . . . . TUBE OF 10 **10<sup>c</sup>**
- FOR BEAUTIFUL FLOORS **Johnson's Klear** . . . . . 1-PT. 11-OZ. CAN **85<sup>c</sup>**

NUTLEY — IN QUARTERS  
**Margarine**  
 6 1 lb. Ctns. **97<sup>c</sup>**

YELLOW CLING  
**A&P Peaches**  
 SLICED OR HALVES  
 4 1 lb. 13-oz. Cans **99<sup>c</sup>**

A & P GRADE "A" LIGHT, CHUNK  
**TUNA FISH**  
 Net Wt. 6 1/2 oz.  
 4 Cans For **89<sup>c</sup>**

SPECIAL SALE!  
 VACUUM PACKED  
 REGULAR OR DRIP  
  
**A&P Coffee**  
 2 1 39  
 LB. CAN

U.S. No. 1 GRADE  
**Russet Potatoes**  
  
 20 **79<sup>c</sup>**  
 POUND BAG

SAVE 16¢—JANE PARKER, 8-INCH  
**Apple Pie** 1-LB. 8-OZ. **39<sup>c</sup>**  
 DATED FRESH DAILY—JANE PARKER 1-LB. 13-OZ. LOAF **21<sup>c</sup>**  
**Cracked Wheat Bread**  
 SAVE 6¢—JANE PARKER PKG. OF 12 **39<sup>c</sup>**  
**Glazed Donuts** . . . . .

THOMPSON WHITE  
**Seedless Grapes** LB. **19<sup>c</sup>**  
 MICHIGAN **Prune Plums** . . . 3 LBS. **49<sup>c</sup>**  
 8-SIZE **Honey Dew Melons** EACH **59<sup>c</sup>**

- A&P GRADE "A" **Tomato Juice** . . . . . 4 1-QT. 14-OZ. CANS **99<sup>c</sup>**
- RED SOUP POTTED **A&P Cherries** . . . . . 6 1-LB. CANS **89<sup>c</sup>**
- A&P FREESTONE—HALVES OR SLICED **Homestyle Peaches** 3 1-LB. 13-OZ. CANS **89<sup>c</sup>**
- DINTY MOORE **Beef Stew** . . . . . 1-LB. 8-OZ. CAN **42<sup>c</sup>**
- A&P GRADE "A" **Cream Corn** . . . . . 4 1-LB. CANS **59<sup>c</sup>**

PURE VEGETABLE  
**dexo Shortening**  
 3 Lb. Can **69<sup>c</sup>**

**A&P FROZEN FOOD SALE!**  
 Peas, Cut Corn, Spinach  
 Chopped Broccoli, Peas & Carrots  
 or Mixed Vegetables  
 Net Wt. 10-Oz.  
 7 Pkgs. **1 00**



**Giant TIDE**  
  
 3-LB. 1-OZ. PKG. **74<sup>c</sup>**  
**IVORY LIQUID** Washday Detergent 1-PT. 6-OZ. **58<sup>c</sup>**  
**SAFGUARD** Facial Soap 2 BARS **31<sup>c</sup>**

THE GREAT ATLANTIC & PACIFIC TEA COMPANY, INC.  
  
**Super Markets**  
 AMERICA'S DEPENDABLE FOOD MERCHANT SINCE 1859