

## Dr. Wischman Joins Staff Of Hamilton

Dr. Charles Wischman, of 1073 Penniman, Plymouth, has been appointed medical director for the Alexander Hamilton Life Insurance Co.

He is a native of the Detroit area, attended Michigan State University where he was graduated with honors in 1957.

Dr. Wischman received his medical degree from the University of Michigan in 1961 and served his internship and Internal Medicine Residency in St. Joseph Mercy Hospital in Ann Arbor.

Dr. Wischman is a member of the Washtenaw County Medical Society, the Michigan Medical Society and the American Medical Association. He also is a member of Phi Eta Sigma and Phi Kappa Phi honorary societies and the American Federation for Clinical Research. He received a research award from St. Joseph Mercy Hospital in 1965.

Dr. and Mrs. Wischman are the parents of five children, Mark, Jeffrey, Lori, Kim and John. He has located his private practice in Plymouth.

**D. P. W. News, Notes**

BY SUPT. JOSEPH BIDA

Plymouth Dept. Public Works Work has started on the Traffic Study report of the Automobile Club which indicated some of the traffic signs in the city were too low. The study of the Department of Public Works will know how expensive the recommendations of the AAA will be to the city.

Fire hydrants were flushed throughout the city's northwest section on Thursday and Friday evenings from 9 p.m. to midnight. This flushing will continue until all hydrants have been cleared.

Grading, paving, sealing and chipping has been completed on the following streets: McKinley, Linden, Coolidge, Byron, Herald, Hamilton and Davis. The DPW used 7,000 gallons of primer, 11,000 gallons of sealer and 380 tons of crushed stone in completing this project.

The torch to the Plymouth Community Fund Drive was installed by DPW crews during the week.

Spading and cleaning of city parks and the area around the City Hall was continued and the DPW yard was cleaned during the week.

Work was continued with land re-fill at the Salem refuse site. A six-inch sanitary sewer tap was installed on Roe Street. The Department handled one funeral and a water sewer was repaired and a storm sewer manhole built on Roe Street between Elizabeth and Union Streets.

## D. P. W. News, Notes

**Bentley Band In College Homecoming**

This Saturday, October 16, the Bentley High School Band under the direction of Robert Clark, will be featured in Western Michigan University's homecoming parade.

The invitation to participate in festivities at Salinas was extended by Bentley graduate Geri Cowden who is chairman of the parade committee.

**Architect Firm Promotes Reitzel**

E. David Reitzel has been appointed an associate member of the Livonia architectural firm of Ralls-Hamill-Becker. His primary responsibilities will be in the area of field supervision and project architect.

A graduate of Lawrence Institute of Technology and a Professional Associate of the American Institute of Architects, he has been with the firm for two years. He lives in Nankin Township.

The firm has moved into remodeled and expanded office space at 15223 Farmington Rd. Additional drafting room area, a new reception-clerical area, a new business office and a new conference room are included.

Gary McBrady, Michigan State sophomore soccer performer from St. Louis, Mo., played on the U. S. National Junior team that competed in the 1964 Central American tournament.

Want ads get quick results!

## Dr. Wischman Joins Staff Of Hamilton

Dr. Charles Wischman, of 1073 Penniman, Plymouth, has been appointed medical director for the Alexander Hamilton Life Insurance Co.

He is a native of the Detroit area, attended Michigan State University where he was graduated with honors in 1957.

Dr. Wischman received his medical degree from the University of Michigan in 1961 and served his internship and Internal Medicine Residency in St. Joseph Mercy Hospital in Ann Arbor.

Dr. Wischman is a member of the Washtenaw County Medical Society, the Michigan Medical Society and the American Medical Association. He also is a member of Phi Eta Sigma and Phi Kappa Phi honorary societies and the American Federation for Clinical Research. He received a research award from St. Joseph Mercy Hospital in 1965.

Dr. and Mrs. Wischman are the parents of five children, Mark, Jeffrey, Lori, Kim and John. He has located his private practice in Plymouth.

## Architect Firm Promotes Reitzel

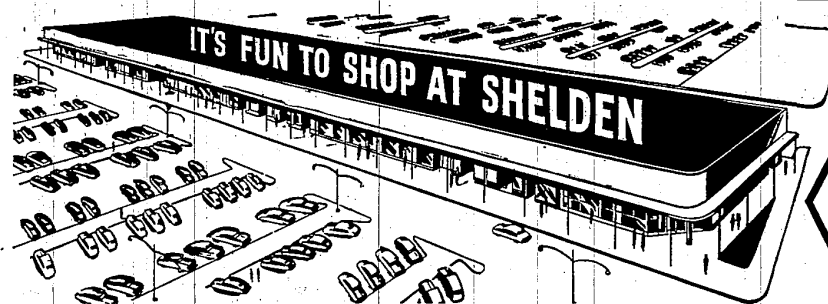
E. David Reitzel has been appointed an associate member of the Livonia architectural firm of Ralls-Hamill-Becker. His primary responsibilities will be in the area of field supervision and project architect.

A graduate of Lawrence Institute of Technology and a Professional Associate of the American Institute of Architects, he has been with the firm for two years. He lives in Nankin Township.

The firm has moved into remodeled and expanded office space at 15223 Farmington Rd. Additional drafting room area, a new reception-clerical area, a new business office and a new conference room are included.

Gary McBrady, Michigan State sophomore soccer performer from St. Louis, Mo., played on the U. S. National Junior team that competed in the 1964 Central American tournament.

Want ads get quick results!



**SHELDEN CENTER**

PLYMOUTH ROAD FARMINGTON ROAD

**DAY IN AND DAY OUT YOU GET MORE FROM SHELDEN CENTER STORES**

*I've Had it . . .  
Back to  
Shelden Center  
for Me!*



No more scurrying around, looking to save a few pennies here or a nickel there! I found out the hard way — going here, there and everywhere, hunting for a so-called bargain, can really cost you cash. Believe me, the best buys are right at Shelden Center . . . and you'll never wish you were in or over a barrel, when you do your shopping at Shelden Center, where there are more stores, more selection, more values and more convenience. Saves gasoline . . . saves wear and tear on the car, and you, too.

**Shop Shelden Center Stores  
Until 9 p. m. Thurs., Fri., Sat.  
Some Stores Open Monday 'til 9 p. m.**

**SAVE!**

on GUERNSEY'S  
Every Day LOW PRICES

Homogenized Vitamin D  
**MILK 35¢**

Low Fat Homogenized  
**MILK 33¢**

Chocolate  
**MILK 39¢**

**Guernsey's DAIRY STORES**  
10940 Farmington Rd.  
8276 Merriman Rd.

**MOTOROLA 23" COLOR TV Here!**  
WITH 6 MONTHS FREE SERVICE



SERVICE Is Our BUSINESS  
Bring in your TV for Counter Service  
OR CALL  
GA 7-7970

**SHELDEN CENTER TV** Sales and Service  
10910 Farmington Rd., Shelden Center

it's **SNOW SUIT**  
Time at Bambi Shop



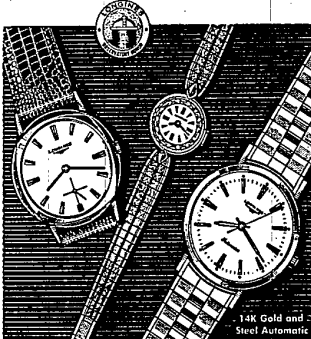
So easy to select just the right snow suit for your son or daughter because Bambi's selection covers a wide range of styles and prices.

Toddler Sizes  
2-4 start at \$10.98  
Gardner's \$18.00  
Size 4-6  
from \$13.98 to \$19.88  
Gardner's \$21.00

**BAMBI SHOPS**

Children's Apparel to Size 14  
Shelden Center, Livonia GA 1-6400

**ADRIAN'S Jewelers Feature "OBSERVATORY HONOR" watches from Longines!**



LONGINES . . . Accuracy and Elegance.

**ADRIAN'S Fine Jewelers**  
Watches — Diamonds — Service  
Shelden Center, Livonia GA 1-2713

**Special Purchase!**  
**4-DRAWER FILE CABINET**

Full Suspension Reg. \$53.95 Value **\$39.95**

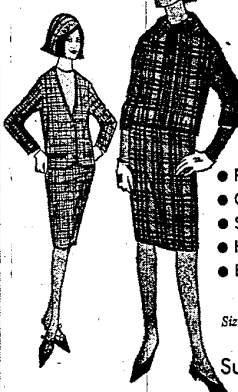


**FREE with this ad . . . "TWISTY" THE RUBBER DOG**  
You can twist him, shape him and make him do hundreds of crazy things. All for laughs. Clip This Ad and Get Yours Today.

**BULTEN-SMITH OFFICE SUPPLIES**  
SHELDEN CENTER LIVONIA

*Country Casuals*

**Pendleton Coats**



- Plaids
- Checks
- Solids
- Hop Sack
- Heather

Sizes 8 to 20

Suits \$36

**Ron Lon SHOPS**  
Quality Fashion is Our Specialty

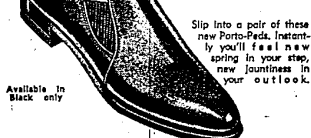
**PORTAGE PORTO-PED SHOES FOR MEN**

**3-DAY SPECIAL!**  
Your Choice of Styles

Reg. \$13.95 Value  
**\$9.88**  
Pair



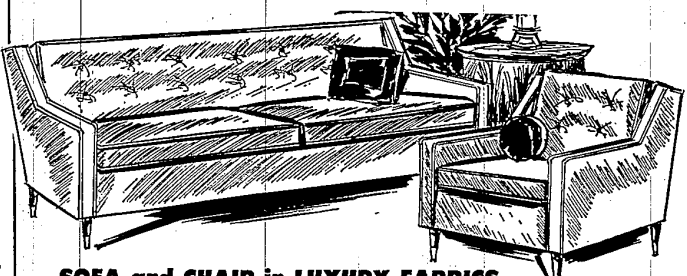
Smart Plain Toe Slip-on. Black, Brown, Cordovan color.



Slip into a pair of these new Porto-Peds. Instantly you'll feel new spring in your step, new jaunty in your outlook.

**Hocking Shoes**  
Shelden Shopping Center

**Sofa and Chair Offer! Save \$100**



**SOFA and CHAIR in LUXURY FABRICS**

- Foam Rubber Cushions
- Fully Upholstered
- Zippered Cushions
- Upholstered Deck

only **\$189** 2 pcs.

- Choice of Fabrics
- Choice of Colors
- Arm Caps

**STORE HOURS:**  
Monday, Thursday  
Friday and Saturday  
9 'til 9  
Tuesday - Wednesday  
9 'til 5:30

**SAV-ON Furniture**

Shelden Center, Livonia

Phone 425-3120

**IT PAYS TO SHOP AT SHELDEN CENTER! EASY PARKING-BETTER SERVICE!**