



A&P is the Store that Saves You More!

U.S.D.A. GRADE "A" "SUPER-RIGHT" QUALITY YOUNG TURKEYS

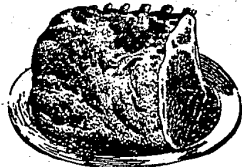


10 TO 16-LB. SIZES 17 TO 22-LB. SIZES

39^c **35^c**
lb lb

"SUPER-RIGHT" QUALITY

PORK LOIN ROAST

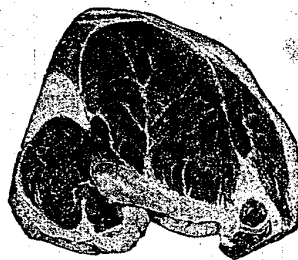


FULL 7-RIB PORTION LOIN END PORTION

39^c **49^c**
lb lb

Pork Chops Center Rib Cuts **79^c**

FULLY COOKED
CANNED HAMS **6** **4⁸⁹**
LB. SIZE



"SUPER-RIGHT" MATURE, CORN-FED BEEF

STEAKS

CENTER CUT Round CUBE OR Sirloin

89^c **99^c**
lb lb

CHIP or T-BONE **1⁰⁹** PORTER-HOUSE **1¹⁹**
LB. LB.

Fresh Mushrooms **49^c**

Country-Style Spare Ribs

"SUPER-RIGHT" QUALITY **49^c**
lb

- WHOLE OR HALF "SUPER-RIGHT" Pork Loins **59^c** lb
- "SUPER-RIGHT" Ground Round Steak **89^c** lb
- "SUPER-RIGHT" BONELESS NEW YORK Strip Steaks **1⁸⁹** lb
- Fryer Legs CUT FROM GOVT. INSPECTED FRYERS **59^c** lb
- Fryer Breast CUT FROM GOVT. INSPECTED FRYERS Ribs Attached **59^c** lb
- "SUPER-RIGHT" SMOKED Polish Sausage **59^c** lb

PEELED AND DEVEINED — MED. SIZE

SHRIMP

3 **3⁹⁹**
LB. PKG.

CAPM JOHN'S Breaded Shrimp **1⁷⁹** 1/2 LB. PKG.

No Coupons, No Gimmicks, No Limits . . . Just Quality Merchandise at Low Prices!

SPECIAL SALE!
EIGHT O'CLOCK COFFEE
3 **1⁸⁹**
LB. BAG

MARVEL ICE CREAM
Vanilla, Chocolate, Neapolitan, Fudge-Marble or Butterscotch-Marble
49^c

Pure Vegetable Shortening
dexo
3 **65^c**
LB. CAN
SHORTENING Spry 7/8 Off Label **3** **77^c** LB. CAN

VELVET BRAND
Peanut Butter
2 **69^c**
LB. JAR
SULTANA Peanut Butter 3-LB. JAR **67^c**

Save on Canned Vegetables
ASPP GRADE "A" FRENCH STYLE GREEN BEANS 1-LB. CAN
ASPP GRADE "A" WHOLE KERNEL OR CREAM GOLDEN CORN 1-LB. CAN
ASPP GRADE "A" — CUT GREEN BEANS NET WT. 15 1/2-OZ.
IONA TOMATOES 1-LB. CAN } **4** **59^c** CANS FOR

Jane Parker BAKED FOODS
FRESH DATED, ENRICHED
White Bread
2 **39^c**
1-LB. 4-OZ. LOAVES
SAVE 10c — 8-INCH
Lemon Pie
1-LB. 8-OZ. SIZE **39^c**
ALMOND-CRESCENT
Cookies
OVER 100 IN 2-LB. PKG. **79^c**
SAVE 20c
Chocolate Brownies
IN FOIL PACKAGE Net Wt. 13-Oz. **49^c**
Over 300 Fruit & Nut — Light Butter
Fruit Cakes
5-LB. SIZE **3⁹⁹** 3-LB. SIZE **2⁹⁵**
1-LB. 8-OZ. SIZE **1⁴⁹**

ASPP GRADE "A" Pineapple Juice 3 **89^c** 1-QT. 14-OZ. CANS
"SUPER-RIGHT" Corned Beef 4 **43^c** NET WT. 12-OZ. CAN
CHICKEN NOODLE Wylers Soup 10 **10^c** NET WT. 14-OZ. PKG.
EARLY GARDEN Stokely Peas 2 **41^c** 1-LB. 1-OZ. CANS
FACIAL—BONUS PACK Woodbury Soap 4 **45^c** 6 BARS IN PKG.
TOILET—1 PLY 4 1/2" x 4 1/2" Scot Tissue 4 **49^c** 1000 SHEET ROLLS
READY TO BAKE Pillsbury Biscuits . . . 3 **29^c** NET WT. 8-OZ. PKG.
MORTON'S FROZEN Cream Pies 2 **29^c** NET WT. 14-OZ. PKG.
10c OFF LABEL Fab Detergent 3 **64^c** 3-LB. 1 1/4-OZ. PKG.
GIANT—15c OFF LABEL Ad Detergent 2 **56^c** 3-LB. 2-OZ. PKG.
DEODORANT SOAP—2c OFF LABEL Palmolive Gold . . . 2 **25^c** FACIAL SIZE BARS
BATH SIZE Palmolive Soap . . . 3 **49^c** BARS
FACIAL SIZE Vel Beauty Bar . . . 2 **39^c** BARS
GIANT SIZE—DETERGENT Ajax Laundry 2 **74^c** 8-LB. 1 1/4-OZ. PKG.
DETERGENT Vel Liquid 1 **58^c** 1-PT. 6-OZ. PLASTIC
SAVE AT ASP Vel Detergent 2 **33^c** NET WT. 15-OZ. PKG.

U.S. No. 1 Western Red Delicious **Apples** 113 Size **10** **59^c** FOR
U.S. No. 1 Grade Russet Potatoes **20** **99^c** LB. BAG
Bananas 2 **25^c** LBS.
Golden Yams LB. **10^c**
Grapefruit RUBY RED OR MARSH SEEDLESS . . . 5 **59^c** LB. BAG

A&P Frozen Foods
10-OUNCE PACKAGES
Peas, Peas & Carrots
Cut Corn, Spinach
Mixed Vegetables
or Chopped Broccoli
7 **1⁰⁰**

PRICES EFFECTIVE IN ALL A&P STORES IN THIS AREA OF MICHIGAN

Price Effective Through Saturday, Nov. 6th

AP Super Markets
AMERICA'S RESPONSIBLE FOOD PURCHASER SINCE 1915

Ann Page FINE FOODS
FINEST QUALITY **EGG NOODLES**
1-LB. PKG. **29^c**
Spaghetti or Elbow Macaroni
3-LB. PKG. **49^c**
TOMATO SOUP
2 **39^c** 1-LB. 4-OZ. CANS
DAMSON PLUM **Preserves**
2 **49^c** LB. JAR
ORANGE **Marmalade**
2 **49^c** LB. JAR