

## Blue Star Mothers To Be Busy During October

The Blue Star Mothers of America, Chapter No. 49 of Farmington had its meeting for an hour before luncheon at Mrs. Brundie's home last week. This was to avoid conflicting with the Blue Daisies Days which were a grand success.

September 6 was the date of the Southeast District Meeting of Blue Star Mothers. Nine Mothers from the Farmington chapter made the trip to Fowlerville to attend. Farmington's Irene Kreuger, in her capacity as 2nd Vice President of the Department of Michigan, presided at the meeting.

OCTOBER WILL BE a very busy month so the luncheon and card party have been called off just for this month. The National Convention of Blue Star and Gold Star Mothers will take place at the Hotel Deshoule in Miami Florida on October 24-25-26-27 and 28.

## College Night At FHS Oct. 5

Farmington High School will be the scene of the 14th Annual College Night Program Tuesday, October 5. The program, held in conjunction with Our Lady of Sorrows High, Northville, Walled Lake and North Farmington high schools, is designed to provide an opportunity for high school students and their parents to become acquainted with various colleges.

THE THREE-HOUR event begins at 7 p.m. and is composed of two browsing periods and three closed sessions. The browsing periods enable guests to visit the locations of the different colleges and obtain informative literature. During the 40-minute closed sessions, each college representative will discuss his institution and answer questions pertaining to that particular college.

Oakland Community College, the University of Detroit, and Western Michigan University will take part in a panel discussion during the first two closed sessions. The four topics they will discuss are: 1) selecting a college and the problems of applying; 2) entrance requirements and types of examinations; 3) financing a college education; and 4) the value of summer study sessions as a means of preventing freshman mortality.

MR. JOHN NICHOLS, English teacher and counselor at FHS, is in charge of the program. Students who are organizing College Night include Chairman, Terry Bacon, Mudge Hildebrandt, Paula Norman, and Dennis Moore (all seniors) and Jammers Craig Anderson and Ron Schulte.

## Oakland College Open House Set

Oakland Community College will be open to the public on Sunday, October 3, from 2-3 p.m. The Open House will afford interested persons an opportunity to visit the new college which opened its doors on Sept. 7 to upwards of 4,000 students.

Both campuses will be open to the public. Auburn Hills campus is located at 2900 Featherstone Road, Auburn Heights. Highland Lakes campus is at 7350 Cooley Lake Road, Union Lake.

## LIKE 'EM LIGHT?



\$16.95

This boot gives you what you want in looks and performance. And it's not heavy. You can actually save lifting up to 4 tons per day. That's a big difference! It's in brown latex leather with cushion crepe sole and heel. Steel shank, too.

**Com-pac's**  
COMFORTABLE, PRACTICAL BOOTS

\*Walking 5 miles per day, average shoe size 9\*

**HAIGHT'S SHOES**

33411 GRAND RIVER AVE.

(Next Door to Detroit Edison Office)

this year. The delegate from Chapter No. 49 will be Irene Kreuger.

October 6 will celebrate the anniversary of Chapter No. 49 with a dinner to be held at the home of Ethel Lint's son, Mary Jo Brown, is chairman and would appreciate the help of any member with the duties to perform.

## Extension Study Group Formed In Farmington

Homemakers in Farmington recently met to organize the 116th Extension Study group in Oakland County. Homemakers in the Warner Farms Subdivision indicated an interest in the home economics Extension program brought to communities from Michigan State University Cooperative Extension Service by county or area Extension Agents.

Mrs. Carol Kurth, Extension Home Economist in Oakland County, met with the group. She explained the purpose of the study groups and answered questions about the organizing and function of the groups. Similar groups throughout the county learn home economics family living information through this adult education program cooperatively sponsored and financed by the federal, state and county governments.

Officers appointed for the new group, to be called Warner Farms Extension Study Group, are: chairman, Mrs. Frank Naglich; vice-chairman, Mrs. Dale Golla; secretary, Mrs. William Jamison; and treasurer, Mrs. Thomas Kolhoff.

Other members are Mrs. James Langman, Mrs. William Van Deusen, Mrs. William Tarran, and Mrs. Robert Fralick. Interested homemakers in the area should contact Mrs. Frank Naglich for more information.

## Local Men

Begin 9 Wk.

## Navy Training

Seaman Recruit Edward L. Groth, 19, USN, son of Mr. and Mrs. Leonard J. Groth of 29931 S. Stockton Drive, Farmington, and Seaman Recruit Thomas M. Simrak, 18, USN, son of Mr. and Mrs. Joseph Simrak of 22371 Middlebelt, Farmington, have begun nine weeks of Navy basic training at the U.S. Naval Training Center, Great Lakes, Ill.

In the first weeks of their naval service they will study military subjects and live and work under conditions similar to those they will encounter on their first ship or at their first shore station.

## Women's Civic Club

Has Show Set Sept. 30

The Women's Civic Club of Farmington is holding their second annual Hat Show Thursday, September 30, 8 p.m. until 11 p.m. at the First Farmington Savings and Loan Company, corner of Grand River and Orchard Lake Roads. For further information, call Nancy Noble of 476-5610.



FARMINGTON JAYCEETTES (L to R) Mary Lou Parnin and Ginny Kuban are leading the local effort for the Fisher Theater Night planned by the Metropolitan Detroit Area Junior Chamber of Commerce Auxiliaries. Ticket information for the world premiere of "Skyscraper" starring Julie Harris can be obtained by calling either Mrs. Parnin (GR. 4-5742) or Mrs. Kuban (471-6211). Helping with the distribution of posters above is three-year-old Carol Parnin. Posters are on display at the Hinkley store and other business places throughout the community.

## SHOP - COMPARE TODAY

Example of Sentry Auto Policy for a Driver over 25

• Bodily Injury \$50,000 • Uninsured Motorists, \$10,000  
• Property Damage \$5,000 • Comprehensive Full Pay Road Service \$25  
• Medical Expense \$2,000 • Personal Effects \$200

Call Today for All the Facts

ONE YEAR COST \$69

(NO-BUSINESS-USE-MOST-CARS)

Monthly and Quarterly Payment Plans Available



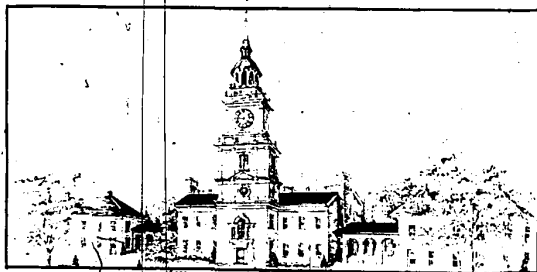
**SENTRY INSURANCE**  
HARDWARE MUTUALS - SENTRY LIFE

DICK MCCLURE  
GR. 4-5984

If No Answer, Call 442-5813

## Independence Green

## FARMINGTON'S NEW LUXURY APARTMENTS



With the opening of Independence Green Apartment Development, Thomas A. Duke and George A. Duke, Jr., developers, builders and owners have today brought to the apartment market, a new concept of living. It has generally been accepted that to live within view of a rolling 18-hole golf course is a location generally reserved for expensive residences - from \$40,000.00, often up to the hundreds of thousands of dollars.

Not so at Independence Green. Included with the magnificent view of the 18-hole course residents enjoy a modern luxurious apartment, complete with carpeting, drapes, washer and dryer, and, if desired, complete furnishings. In addition, tenants have available to them probably one of the most magnificent Country Club facilities in the country, modeled after the Independence Hall in Philadelphia. The exterior will be an exact imitation of size, style and detail of the historic building. The interior, however, will be redesigned to provide 38,000/square feet of floor area.

This tremendous size will be devoted to swimming pool, (indoors) club rooms, lounges, breakfast room, dining room, locker rooms, pro-shop for the golfers, offices, private dining rooms, bar, sauna bath, card rooms, ballroom, billiard rooms, t.v. rooms, library, teen room, sun deck, nursery, and other miscellaneous activity rooms. In addition to these facilities, the residents at Independence Green will soon have tennis courts and still more ideas are in the making. This comprehensive plan, which includes almost 2,000 apartments, varying in size from the efficiency to 4-bedroom luxury models, in addition to a 180-room motel and shopping center in the round, will offer tenants a quietude and luxury way of life, which cannot be compared.

The convenience of this location, immediately adjacent to "The world's largest interchange," allowing the residents to travel East, West, North or South on Ten Mile Road, Grand River, I-696, I-96 and the soon to be constructed I-275, is indeed appealing.

A golf course, a country club, and many activities is something which has received great enthusiasm. With so many facilities close by, well maintained, supervised and attractive, the residents may enjoy neighborly get-togethers and nightly entertainment. Beamed ceilings, chandeliers, paneled walls, fireplaces, swimming pools will lend an atmosphere of living like a millionaire at a low monthly cost.

## INDEPENDENCE GREEN

Grand River Ave. At Halstead Rd. - Farmington

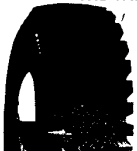
PHONE 474-7284 FOR APPOINTMENT

## ★ GRAND ★ OPENING

## BE PREPARED FOR WINTER DRIVING PUT MORE GRIP IN YOUR TRIP... ANYWHERE



## THE VALUE LINE OF NYLON WINTER TIRES



### KANT SLIP

1. KANT SLIP NYLON—Kelly-Springfield's economy winter tire. Rugged performance at a low, low cost.

SALE PRICE  
6-50-13 \$945 each  
7-57/7-50-14 \$1195 each

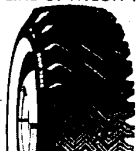
PRICES CUT ON WHEELS when you buy Kelly-Springfield winter tires at regular retail prices.

7-57/7-50-14 or 7-57/6-50-15 \$1505 each  
7-57/6-50-15 \$1590 each  
7-57/6-50-15 \$1710 each  
7-57/6-50-15 \$1950 each

8-55/8-00-14 or 8-45/7-50-15 \$1950 each

All Prices Plus Tax and Tire Off Car.

FREE MOUNTING! NO MONEY DOWN! UP TO 6 MONTHS TO PAY!



### GRIP TRAC

2. GRIP TRAC NYLON. Bonus value at a popular price. You get extra mileage, extra winter driving protection.

SALE PRICE  
7-57/7-50-14 or 7-57/6-50-15 \$1505 each  
7-57/6-50-15 \$1590 each  
7-57/6-50-15 \$1710 each  
7-57/6-50-15 \$1950 each

8-55/8-00-14 or 8-45/7-50-15 \$1950 each

8-55/8-00-14 or 8-45/7-50-15 \$1950 each

8-55/8-00-14 or 8-45/7-50-15 \$1950 each

8-55/8-00-14 or 8-45/7-50-15 \$1950 each

8-55/8-00-14 or 8-45/7-50-15 \$1950 each



### EXPLORER

3. EXPLORER NYLON—Kelly-Springfield's top-of-the-line, premium-quality winter tire. None better!

SALE PRICE  
7-57/7-50-14 or 7-57/6-50-15 \$1825 each  
7-57/6-50-15 \$1910 each  
8-25/8-00-14 or 8-15/7-10-15 \$2120 each  
8-55/8-00-14 or 8-45/7-50-15 \$2315 each  
8-55/8-00-14 or 8-45/7-50-15 \$2580 each

8-55/8-00-14 or 8-45/7-50-15 \$2580 each

8-55/8-00-14 or 8-45/7-50-15 \$2580 each

8-55/8-00-14 or 8-45/7-50-15 \$2580 each

8-55/8-00-14 or 8-45/7-50-15 \$2580 each

8-55/8-00-14 or 8-45/7-50-15 \$2580 each

## TIRE

# Sale

In Celebration of the opening of our newest store at 12560 Woodward in Highland Park

Kelly Springfield has shipped our stores 2 truck loads of specially priced premium quality tires. Because of the low price the name has been removed, but all tires carry fine workmanship material and road hazard guarantees.

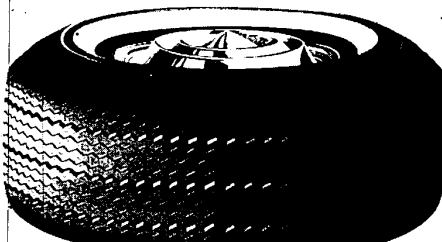
## Premium Quality Tubeless Nylon Whitewall

Extra Tread Depth - Extra Tread Width - Extra Cord Body Strength

ANY SIZE WHITE \$12.95

Blackwalls \$1.00 Less.

Plus Federal Excise • All Tires Mounted Free • Budget Terms



# CAPITAL TIRE

22843 ORCHARD LAKE ROAD

OPPOSITE FARMINGTON PLAZA

474 - 5042