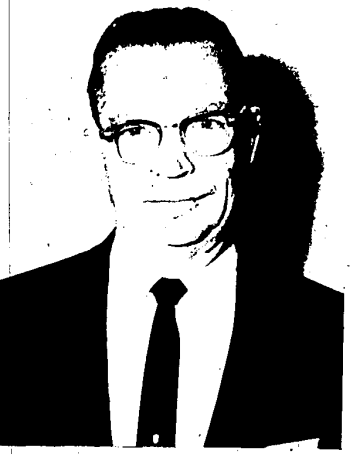


### Local Physician Goes to Convention

A Farmington physician, Dr. Edward W. Green of 28317 Forestbrook, was among five Oakland County physicians on Research, Professional Education and the Dean's Fund, and of the Board of Trustees. He participated in American Heart Association groups studying, 1. the proposed Federal Medical Complexes, and 2. Designing Local Research Activities.

Dr. Green, who specializes in heart ailments of children at Ford Hospital, Detroit, is a member of MHA committees on Research, Professional Education and the Dean's Fund, and of the Board of Trustees. He participated in American Heart Association groups studying, 1. the proposed Federal Medical Complexes, and 2. Designing Local Research Activities.



### Your Satisfaction Is This Man's Job....!

UNUSUAL JOB?  
NOT FOR DAN GEISLER

That's because he has been appointed as Customer Relations Manager for Town & Country Dodge. And, with over thirty years of experience in the automotive business to his credit, we know that he is well qualified for this important position in our organization.

As our Customer Relations Manager, Dan Geisler has the full-time responsibility of making customer satisfaction a reality in every department of our organization. He is here to serve you and to help you in every possible way, and he will make every effort to see that you are satisfied in every transaction you have with us. Customer satisfaction with everything we do is important to us at Town & Country Dodge. We are confident that our appointment of a Customer Relations Manager will enable us to serve you better.

## TOWN & COUNTRY DODGE

Grand River at Nine Mile GR 4-6750

RICHARDSON/NEMSCHOFF'S

## Contemporary/Cole!

25% Reduction for 2 Weeks Only

Chair as shown reg. 139.50  
Sale Price 99.50

## Ray Interiors

"Furnishings for Distinctive Homes"

33300 Slocum Drive, Farmington

Off Farmington Rd. 2 Blks. S. of Grand River Ph. 476-7272

Mon., Thurs., Fri., till 9 p.m. Tues., Wed., and Sat. till 5:30 p.m.



THE FARMINGTON ELKS, B.P.O.E. 1889, are getting ready for their Annual Turkey Shoot to be held Sunday, November 7 (12 noon until 5 p.m.), public invited, on the grounds beside Marco's Inn, Grand River Avenue just west of Ten Mile Road and the Grand River overpass of the 196 Expressway. Pictured above are Elks (L to R, seated) Don Stewart, Joe Berdell, John Spiller, Matt Cairns and Fred Menke as "Boots" Chambers (right, standing) gets in a little early practice on the target held by "Fearless" Bill Everhart. A pancake and sausage breakfast will be held prior to the Turkey Shoot at the Farmington Elks Lodge, 3212 Grand River Avenue, sponsored by the Elks Vivians Club, and the public is cordially invited.

## Tips on Gardening

By Betty Frankel

**BARBERRY**

Barberry is such a common shrub that it is often regarded with scorn or else is completely overlooked by gardeners. These spiny shrubs have many merits to recommend them, however, being both attractive and exceedingly easy to grow.

The common barberry, *Berberis vulgaris*, is a native of Europe and Asia that has become naturalized in the eastern half of the United States. It has small oval leaves that color beautifully in autumn. It has bright yellow flowers in Spring followed by showy scarlet berries that last far into the winter. The common barberry is a medium sized shrub which has gracefully arching branches. It can be left natural or can be pruned and sheared to a formal shape, thus making it an excellent hedge plant.

The Japanese barberry, *Berberis thunbergii*, is a handsome variety whose leaves turn orange and scarlet in Fall. It may be used as a specimen plant or for a formal or informal hedge. There are dwarf forms of Japanese barberry that make good low edgings. Box barberry and Red Pygmy are among the more popular of these dwarf varieties. There are numerous other attractive horticultural varieties.

THERE ARE ALSO evergreen barberries that retain their leaves all winter. They are less hardy than the leafless kinds, however, and are grown mostly in the South. A few are hardy in this area if grown in a somewhat protected spot. One of the hardiest is *Berberis julianae*. It grows six feet tall and has blue-black fruit. The leaves are like miniature holly leaves and it is quite thorny.

The Mahonias, or grape hollies, are also members of the barberry family, and are closely related to the barberries.

Barberries thrive in a wide variety of soils. They seem to grow equally well in clay soil or in sandy soil. Although they will withstand some shade, best results are obtained when they are grown in a sunny spot. They will withstand both frost and dryness well.

Unfortunately the common barberry and some other varieties are susceptible to wheat rust disease. They serve as the alternate host for this fungus and cannot be grown in wheat-growing areas. By eliminating the barberry, a link in the life cycle of the rust is broken. In areas where wheat is not grown this is no problem and there are no restrictions placed on the planting of these handsome easy-to-grow shrubs.

**REMEMBERS**

Take advantage of pleasant sunny days to wander across fields and down byways enjoying autumn foliage color which is now at its height. . . . October is the time for cleaning up the garden. Remove dead plants, stems and leaves from the vegetable and flower garden and much will have been done to provide a healthy garden next year. Burn foliage and stems that may harbor pests. Put healthy leaves on the compost pile. . . . If you have no compost pile, start one with leaves raked from the lawn. These decay to valuable humus that can be used for dressing beds or potting house plants. . . . Maple trees show individual variations in color that appear again year after year. If the gardener wishes to plant a tree with a particular shade of autumn color it is wise to pick out and tag the tree now when it still has leaves. . . . Continue planting bulbs for next Spring's display. . . . The planting season has arrived for trees and shrubs.

### Founders Day Planned Oct. 26 By Delta Zetas

The Oakland County Alumnae Chapter of Delta Zeta Sorority, with the aid of the Detroit Alumnae Chapter, will celebrate their 63rd year October 26. Their Founders Day celebration dinner will be held at the Birmingham Village Women's Club, 190 East Long Lake Road, Bloomfield Hills, on Tuesday, October 26, at 7 p.m.

The speaker for the evening will be Miss Marie Stevens, a former Delta Zeta and now living in Kalamazoo. Miss Stevens is Associate Dean of Students at Western Michigan University and past Provost-Director of Delta Zeta.

THE TOAST MISTRESS for the evening will be Mrs. George Betker of Royal Oak. The founders day ceremony is being conducted by Mrs. Donald C. Burch of Birmingham.

## The Farmington Enterprise COMMUNITY CALENDAR

Sponsored by Farmington Enterprise  
Coordinated by Joyce Auxiliary

All copy due no later than Thursday.  
Contact: Mary Sue Kuhnlein 474-4783 or Rae Williams, 744-3833

**OCTOBER**

Every Wednesday: Exchange Club 12:15 p.m., Salem Church First and Third Thursdays, Soroptimist Club

Every Tuesday: Kiwanis, 6:30 p.m., Botsford Inn Second and Fourth Tuesday, Lions Club and Optimist Club 6:30 p.m., Botsford Inn.

29 Jaycee Auxiliary Babysitting Clinic, 7:30 p.m.-8:30 p.m. O. E. Dunckel Jr. High, 12 Mile Rd. 1st session, First Aid, Boys and Girls Jr. High age and older.

29 Jaycee New Membership Night, for Farmington men 21 to 35 years of age and their wives, 8 p.m. First Farmington Savings & Loan Building.

21 Book Fair, sponsored by 10 Mile P.T.A., 7-9 p.m.

22 Book Fair, 10 Mile, 9 a.m. - 12 p.m., 1 p.m. - 4 p.m., 7-9 p.m.

23 Book Fair, 10 a.m. - noon, 1 p.m. - 4 p.m.

23 Jaycee Meeting, 8 p.m., 1st Farmington Savings & Loan Building.

30 Halloween Tree Dance, sponsored by Jaycees, Farmington High School (All Farmington Teens).

## Michigan Center of Educational Development

ANNOUNCES THE OPENING OF ITS

## Farmington Reading Center

**SPECIALIZING IN:**

- Remedial and Developmental Reading Instruction - Elementary through College Levels.
- Traditional and Modern Math Instruction - Elementary through College Levels.

Private Tutoring or Small Group Instruction  
For Information Call 476-2570 or 864-2066

33211 Grand River Farmington  
METROPOLITAN CENTER OFFICES

THIS LEG  
NEEDS  
Wash and Wear  
Slacks Washed  
15 Times and  
Never Pressed

THIS LEG  
PRESS SLACKS  
WASHED 15 TIMES  
AND  
NEVER PRESSEL

never needs  
PRESS  
pressing

Mr. Hicks X-Press-Stacks

## BEST LOOKING... LONGEST WEARING

Permanent-Crease Slacks You Can Buy!

Mr. Hicks X-Press Slacks never need pressing! They permanently crease in one wash - it won't wash out, melt, tear, or fade. It's guaranteed to stay set for the life of the slacks. Wash X-Press slacks any way you wish, dry them any way you wish... they never need pressing. New, color-safe light or dark shades.

Smart Ivy Styles, \$6.95  
Sizes 28 to 40

Mr. Hicks Casuals

## FORTIFIED WITH FORTREL NEVER NEED PRESSING

New X-Press slacks of 50% Fortrel polyester, 50% combed cotton... stay wrinkle-free and permanently creased, washing after washing, wearing after wearing... and they never need pressing. Fortrel is used by styles in color-safe light or dark shades. X-Press are the best-looking, longest-wearing permanent-crease slacks you can buy. Men's boys, students' sizes.

Celanese® Fortrel®  
is a trade mark of Fiber Industries, Inc.

Shop Late Mon.-Thurs.-Fri.-Sat. 'Til 9 P.M.

modern men's shop

FARMINGTON PLAZA GR. 6-3660