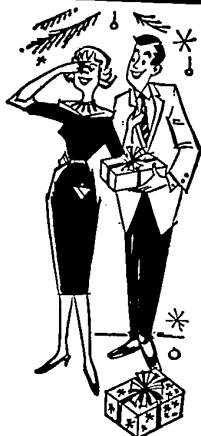


She is wishing for
Daniel Green
COMFY SLIPPERS



at ROSS' you can select gift slippers for men, women or children from the finest of nationally known brands such as "Daniel Green," "Eras," "Walloo Foam Treads" and "Sioux-Mox."

a. DORMIE, soft capeskin leather with padded leather sock lining. Colors: white, black, bone, pink, powder blue.

6⁰⁰

b. SORORITY, soft top grain leather completely pile lined. Colors: black, bone, powder blue

8⁰⁰

c. SABRA, velvet with satin lining. Colors: black or scarlet.

6⁵⁰

OR 4-7710
ROSS
SHOES
FARMINGTON PLAZA

USE YOUR
SECURITY CHARGE

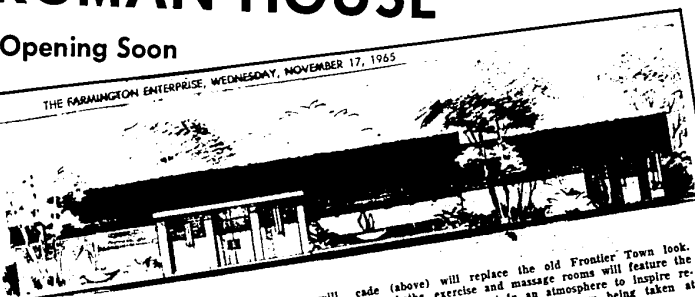
OPEN EVENINGS
UNTIL 9 P.M.

SHOP IN FARMINGTON

Now is the Time to Join
ROMAN HOUSE

Opening Soon

THE FARMINGTON ENTERPRISE, WEDNESDAY, NOVEMBER 17, 1965



"ROMAN HOUSE", a private athletic club for men, will open in the old Parker Frontier Town the first of the year. Extensive remodeling is scheduled to get under way this month to install the facilities for the private club, owned and operated by Louise and Manuel Gorelick of Farmington. The architect's rendering of the Roman House facade (above) will replace the old Frontier Town look. Saunas, baths, exercise and massage rooms will feature the latest modern equipment in an atmosphere to inspire relaxation. Charter memberships are now being taken at 474-8810 and 474-9911.

Special Rates

For Charter Membership 'til Dec. 31

The Roman House Features

- Finnish Sauna Bath
- Exercise Room
- Massage
- Quiet Room to Relax in
- Private Dining Room (Bar Pending)
- Conference Room Available

The ROMAN HOUSE

30689 Grand River — Farmington 474-8810

Players in Profile

By KAYE BRITTON

Hope Nahstoll, the subject of this week's profile, is a most familiar face and name to our Players' audiences. She and her husband, George, are two of the reasons for the very existence of the Farmington Players.

A morning was recently spent with Hope to "gather the facts" for this article, and an interesting morning it was. She is one of four girls born to Goldie and Robin Carr on a thriving



HOPE NAHSTOLL

dairy farm in Fowlerville, Michigan. Her father was well-known in Holstein breeding circles. Her mother was a music and art teacher, and this was also Hope's earliest ambition. The third grade class play, however, found Hope cast as an elf, and acting immediately soared high on her impressive list of interests. It has remained there to this day.

HOPE WAS GRADUATED from Michigan State with a B.A. in Education. She majored in History with minors in English and Music. The cello that stands in a prominent corner of her lovely Locust Drive home today is not a decorator's touch. It has been, and can still be, beautifully played by Hope. She was involved in Dramatics at State also. However, the depression-ridden years leading up to the Forties fired Hope with an interest in world peace, and she then dreamed of molding young minds as a History teacher.

It was at State that Hope met her husband. Also at State she won one of her proudest honors: the prize theme for the traditional Water Carnival. Graduation Day found Hope accepting an elementary school teaching assignment for two years, during which time she was active in the first of her many little theatre groups. The illness of an uncle found Hope

in Colorado Springs for a year, where her cello lessons continued, and she became a member of the Colorado College Symphony Orchestra. Ambition still burning, Hope went to New York. Here, she began to feel that the supposedly glamorous show business life did not really fit into her plans, so she returned to Michigan.

IN 1946 HOPE and George were married. It was a double wedding in the lovely rose garden on her parents' farm. The other bride was her sister, Mary. George was working for Ford Motor Company and they both became original members of the Ford Players. Hope directed their first show "The Torchbearers," and directed and played leads with the group for several years.

In 1947 the Nahstolls bought two acres in Farmington and joined the Dearborn Players. Hope doesn't say whether the long trip for rehearsals or the strong local interest in forming a Players group was the deciding factor in her next venture; however, she was instrumental in the birth and development of what is now known as the Farmington Players. She directed and played the lead in their first show and she has acted in, or directed, fourteen plays for the group since then. Her last appearance on stage at the Barn was as Mrs. Webb in "Our Town," and her most recent directorial assignment was "Rain."

HOPE HAS A fabulous interest in, and knowledge of, costumes. The Players' costume collection is known far and wide through Hope's efforts, and costumes are rented for plays, parties and Halloween. Hope has won many Garden Club awards and has been Chairman of the Flower Show. She has decorated her beautiful contemporary home, designed by her architect friend Hal Whiting.

She has been President of the Players twice and is now directing rehearsals for their forthcoming show "George Washington Slept Here." This hilarious comedy will be presented at the Barn in February. With Hope's unlimited energy and enthusiasm at the helm.

Now Serving In U.S. Navy

Seaman Apprentice Allan J. Hanesman, USN, son of Mr. and Mrs. Richard M. Hanesman of 28033 Grand Duke Drive, Farmington, is serving at the Naval Auxiliary Air Station, Meridian, Miss. The station, a unit of the Naval Air Basic Training Command, provides flight training for prospective Navy and Marine Corps aviators. A graduate of Thurston High School, Detroit, Hanesman entered the Navy in August 1962.

LAST CHANCE to REGISTER
For **FREE** REC. ROOM **BAR**

Painted TRAIN TABLES 4 x 8 . . . 4⁷⁹

UNFINISHED 48"x30"
BOOK CASES 12⁹⁵

Complete Line
of
TOOLS

HEAVY DUTY
Ping Pong Table Tops 12⁹⁵
Folding Legs . . . 5.95

BASKETBALL BACK BOARDS
Small Size 7.95
Large Size 11.95

ROCK SALT
10 lbs. 39c
100 lbs. 1.95

Calcium Chloride
100 lbs. 2⁹⁸

FORMICA
FOR
ALL PURPOSES

• **PLYWOOD**
• **GLASS**
CUT TO SIZE

50 YEARS OF RELIABILITY
FARMINGTON LUMBER
32800 GRAND RIVER GR 4-4015
WE DELIVER

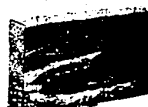
KRESGE'S
DOOR BUSTERS

Thursday - Friday - Saturday December 16 - 17 - 18
— Farmington Plaza Store Only —

JEWELRY BOXES

Reg. 1.99

1⁶⁶



LADIES

PROPORTIONED

STRETCH CAPRIS

33% NYLON 67% RAYON

Reg. 5.99

4⁸⁸



MEN'S - Cotton Flannel and Broadcloth

SHIRTS

Reg. 2.99

2 for 5⁰⁰



TEFLON

WATERLESS COOKWARE

COATED **SET**

11⁸⁸

• NO-STICK

• NO-SCOUR



FARMINGTON SHOPPING PLAZA STORE ONLY
GRAND RIVER NEAR ORCHARD LAKE RD.

S. S. KRESGE COMPANY