

New Township Industry A Big Asset Offer Winter Driving Tips on Traction Devices



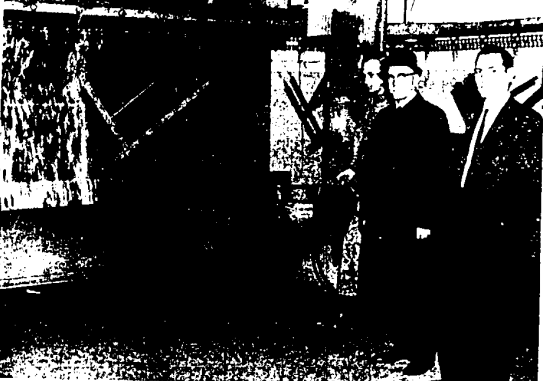
CURTIS H. HALL, Farmington Township Supervisor, is pictured above (at left) being greeted by Mr. Geoffrey Wood, Manufacturing Manager of Diamond Automation, a newly opened plant in Farmington Township's Industrial Park Area. The Supervisor made a tour of plant facilities and viewed operations at the new industry: Diamond Automation is a wholly owned subsidiary of Diamond International Corporation.



THE TAPE PREPARED for a special order is shown to Supervisor Hall (left) by Mr. Wood (L. to R. above) at the machine in the plant which transmits the programmed specifications into the finished product.



SUPERVISOR HALL (left) is getting an explanation of how various machines in the Diamond Automation plant can be programmed and put on tape in the office and later fed to the machine to produce the finished product. The machine operator's job, under the programming procedure, is simplified to being mainly concerned with keeping the machine supplied with material.



A SPRAY PAINTING OPERATION at Diamond Automation is viewed by Supervisor Hall and Mr. Wood (L. to R. above). A large exhaust fan draws air from in front of the conveyor line carrying parts to be sprayed into a steady stream of water so as to eliminate the paint fumes which otherwise might prove harmful to the operator. Paint particles are carried away by the water which takes on the color of what ever color paint is being applied to the parts. The painting operation represents an innovation in safety for the operator and efficiency in getting the work done. The conveyor carrying the painted parts goes through a dryer after passing along the spray line and is ready for final inspection.



A MACHINE THAT CAN BEND one-quarter-inch sheets of steel is in operation (above) at Diamond Automation. Two workmen are shown making the second right-angle bend in the material.

With winter weather blowing in, preparedness minded Farmington drivers have been wondering about the merits of special winter tires as compared with regular rubber, and the quality of stop-and-go traction provided by tire chains as compared with that of a more recently developed device — tungsten carbide studs imbedded in auto tires.

Understandably, some drivers have turned to Farmington police chiefs Irving H. Yakes of the Township and Maurice D. Foltz of the City of Farmington for informed opinions.

Disclaiming any personal expertise in the field of winter traction devices, the two local police chiefs this week gave out the following information which is based on National Safety Council research findings:

CARS EQUIPPED with snow tires with metal studs are safer on ice than cars with regular snow tires, but some reports indicate that their stopping efficiency on wet or dry pavements may be somewhat less than that of cars using regular tires without studs.

Unstudied snow tires provide better traction in snow, and somewhat better traction on ice, than regular tires. Still unmentioned in providing traction for both starting and stopping in severe winter conditions is the time-honored remedy for winter worry employed by generations of drivers — reinforced tire chains, readily applied when needed and easily removed when the need has passed.

Published research results showed the following average performance, based on tests conducted on ice at temperatures ranging from 18 degrees below to 32 degrees above zero.

STOPPING DISTANCE for a car traveling at 20 mph with reinforced tire chains, 70 feet; with snow tires, 107 feet; with studded snow tires, 116 with regular tires, 180 feet.

With respect to pulling ability on ice, studded tires held the same relative position on efficiency—that is, between regular snow tires and tire chains, according to Prof. A.H. Easton, University of Wisconsin, chairman of the Council's Committee on Winter Driving Hazard.

Easton summarized traction test results by reporting that snow tires give 36 per cent improvement over regular tires on ice, studded snow tires provide 15 per cent improvement, and reinforced tire chains offer 405 per cent improvement.

CHIEF YAKES and Chief Foltz warned that drivers seeking traction devices that provide complete summertime traction and permit full summertime driving speed in winter are doomed to disappointment.

Even when using recommended traction aids, they warned that increased caution, reduced speed, and much greater following distances in traffic are the essential ingredients of safe winter driving.

Farmington Man Made Vice-Pres.

Two Farmington men, I. Paul Tesoro and Robert H. Peirson, Jr., have been elected Assistant Vice Presidents of National Bank of Detroit.

Mr. Tesoro, a graduate of Georgetown University's School of Foreign Service, has been an Assistant Cashier in the Bank's International Division since 1957. He lives at 33125 Maple.

Mr. Peirson, who joined the Bank in 1951, has been an Assistant Cashier in the Mortgage Department. He was recently elected Director and Secretary-Treasurer of the Society of Real Estate Appraisers, Greater Detroit Chapter Number 15.

He lives at 30200 Fiddler's Green with his wife, Patricia, and their three children.

Wedding Vows Taken In Novi Judge's Home

Harold Perel of Beverly Hills, California announces the marriage of his sister, Vivian Vickie Henriksen of Farmington to Melvin Ernest Brothers of Wayne, Michigan.

The wedding took place December 23 at the home of Novi Justice of the Peace Robert Anderson who officiated. Witnesses for the couple were Mr. and Mrs. George L. Grapp of Farmington.

The newlyweds planned to honeymoon in Hawaii.

John Says:



JOHN CLAPPISON and CONROY
FARMINGTON INSURANCE AGENCY
33215 Grand River GR. 4-3511

"Found out why the bridegroom never gets a shower — he's all washed up anyway."

This Is Kimberley

VERA R. KERASTAS

With the close of 1965, the computers are busily tabulating all our victories and defeats and converting them into neat statistics. All the beautiful lights, thoughts, and creations the Christmas season evoked from us into beautifying our homes and streets for the glory of the beholder have been thus similarly converted into a few lines of statistics. Here is how it looks on paper:

On Monday, December 23, the Kimberley Association committee of Midge Shotwell, High McChesney, Marie Toupin, Betty Heinzen, and Ed Saville, chairman, judged Kimberley's homes in a Christmas lighting contest. The committee laid some ground rules for next year and this year chose winners from three categories: outstanding, religious, and unique. Thompson-Brown donated a gift to the first prize winners and the association presented an award to the second prize winners.

THE FIRST PRIZE of a clock-radio in the outstanding category went to Mr. and Mrs. Darrell Colley of Dundak for their blue decorative scheme. Second prize winners were Mr. and Mrs. Richard Foran of Greythorne. The honorable mentions in this group are: Mr. and Mrs. James Hacker of Westmeath; Mr. and Mrs. Bud Reaume of Kiltartan; Mr. and Mrs. William Flattery of Westmeath; Mr. and Mrs. Richard Smith of Wicklow; and Mr. and Mrs. Neil Trombley of Greythorne.

The religious theme was best carried out by the Robert Wheelers of Westmeath with their stained glass effect, winning them a home intercom from Thompson-Brown. The second award went to Dr. and Mrs. Donald Kenney of Greythorne for their religious manger figures. The honorable mention in this area was earned by Mr. and Mrs. David Witmer of Greythorne.

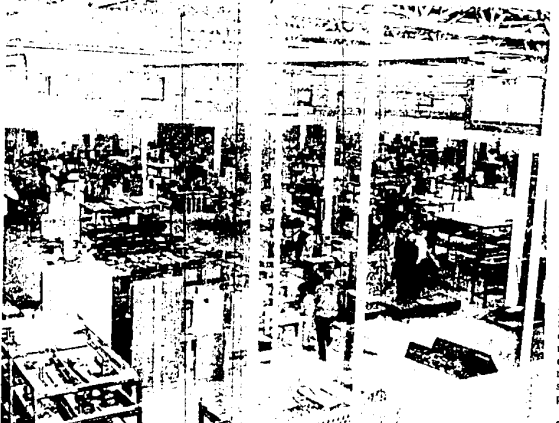
The unique division winners of a coffee pot were Mr. and Mrs. James Slumett of West-

Claus anticipation scene. The second award went to Mr. and Mrs. Fred Barry of Kiltartan for their gigantic step-through wreath display. The Merwin Byer's of Badalament Court earned the honorable mention in this area with their window-views treatment. Congratulations to all the winners and to all non-winners in presenting a cheerful Christmas aura for us all to enjoy in the short yuletide season. A special vote of thanks goes to Mr. Bob Baum for his efforts in decorating our entrances.

SOME GENERAL Kimberley Association news: Speeding within the subdivision has been reviewed with the police and an unmarked radar equipped police-car will work in this area; the Township has been again requested to reinstate the walk to East Junior High from Eleven Mile Rd. to Lincolnshire Subdivision; although the survey has been completed for the proper speed limit for Eleven Mile Rd. and a light at Middlebelt, as yet it has not been evaluated; the Township free once-a-month trash pick-up for Kimberley is now scheduled for the Thursday following the first Monday of each month; vandalism is such a concern in our sub that the association is at a loss and is asking parents for help; the association's continuing projects for 1966 are: 1 — Overhead street light at all three entrances; 2—Refuse service early hour pick-ups; and 3—Additional sodding on Eleven Mile Rd.

Enterprise Gets Editorial Praise
A recent Farmington Enterprise editorial was officially recognized by the Farmington Board of Education at a regular meeting on December 27. Board members expressed the wish that more people shared the same views as those of the editorial.

(Editor's note: The editorial referred to was published on December 1, and stated in essence that traffic safety problems should be the responsibility of City, Township and County officials—not that of the Farmington Public Schools sys-



A VIEW OF THE DIAMOND AUTOMATION plant showing a portion of the 60,000 square feet of building area is shown in the photo above gives an idea of the size of the new Farmington Township Industry. There are 120 employees at Diamond Automation. The new plant is located on a 15-acre site just south of Ten Mile Road on Haggerty Road.

Wood Creek Farms

ANNE M. PHILLIPS 628-4335

The dinner dance on the 17th at the Orchard Lake Country Club was as big a success as it is each year. 104 were there to enjoy a good dinner, dancing, and the best possible company.

On the 22nd Tommy Tyghem had 20 members of the Mustang Club out for a buffet supper followed by games.

On the 28th the Innards had a cocktail party for ten couples, friends in Wood Creek and nearby.

The Davenporters all went to Delray Beach, Florida, to spend the holidays with Bobbette's

turned last week but Bobbette, Wendy, Linda and Tom stayed on 'til the last minute. Bobbette, Wendy, and Tom had reservations back on a plane leaving Miami at 3 a.m. They drove in early for standby on an earlier plane. They made the 11:35 out to so put Linda in the motel to take her; plane back to college in Colorado first thing Tuesday morning.

PAUL AND I also went to Florida for the holidays staying at Pompano Beach. We had Amherst reunions, Wellesley reunions, Alaska tour reunions, and old friend reunions. When we got to Miami Airport for our return trip on the 11:35

Davenporters. They did make the same plane. Bobbette's father phoned Butch that they were on it so he was there to meet the plane on arrival just after 3:30 a.m. Monday morning. We had planned to taxi home but they piled us and all the baggage into their car which had endless capacity.

I'm sure that, knowing the time we got home the morning this column must be in, you will forgive me that this isn't longer. Tomorrow, Tuesday, at the Women's Association meeting I hope to get a lot of news to give you next week.

Home planning begins with your Floor



If you're planning a new decor for your home smart decorating suggests you start with the carpet. Ray Interiors Interior designers have at their fingertip an unmatched selection of fine carpets, which enables them to help you choose just the right one for your home. Choose from Wools, Nylons, and Acrilans—rich plushy velvets to trend-setting high and low loop piles.

Stop in and see us soon and you will start your decorating off on the right foot... with carpet on the floor.

STORE HOURS:
Mon, Thurs. and Fri. 'til 9 p.m.
Tues., Wed. and Sat. 'til 5:30 p.m.
Ray Interiors
"Furnishings for Distinctive Homes"
33300 Slocum Drive
Farmington, Off Farmington Rd. Phone 476-7272
2 1/2 Miles S. of Grand River