

Evans Plant Makes Tremendous Strides In 3 Years

Once known as the company that put wheels (bicycle) under boys and girls in all parts of the world, the Plymouth division of Evans Products Company now is gaining recognition for putting wheels under rail and truck damage-prevention equipment on freight cars.

Matter of fact in the short time of three years, Evans has dropped out of the manufacture of bicycles and now is one of

the nation's leading producers of freight cars.

In the last two years, the Transportation Equipment division in Plymouth has had expansions of more than \$6 million and recently announced plans for a 22,000 square foot administration building. The ground will be broken for the newest addition early this month and a target date of July 1 has been set for completion.

It was just slightly more than two months ago that Executive Vice President and Division Manager James Conroy announced a \$3 million car-building plant expansion that increased the size of the facility to almost 300,000 square feet.

That addition was aimed to increase the capacity of the plant from the present five to 10 new freight cars daily.

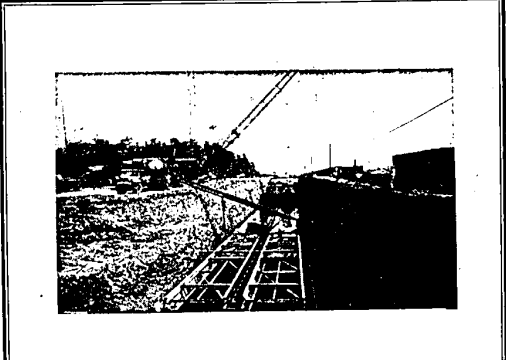
And that announcement came on the heels of an earlier expansion of \$1.5 million to the same facility.

During the interim, Evans acquired the Chicago-based United States Railway Equipment Co., which manufactures, supplies and leases freight cars at Blue Island, Ill.

Evans manufactures freight car brake beams through another recent acquisition, Chicago Railway Equipment Co. It also manufactures automotive equipment at Grand Rapids, material handling racks in Gagetown, Mich., and prefabricated frozen food warehouses in Annapolis, Md.



THIS IS AN architect's conception of what the new administration building at the Evans Products plant will look like when completed in July. Ground breaking is slated within the next 10 days and the administrative staff hopes to be in the new offices long before the hot weather.



Ground breaking is slated within the next 10 days and the administrative staff hopes to be in the new offices long before the hot weather.

Of all the plants in the Plymouth area, Evans has made the greatest strides in the past three years — just growing and growing with still more expansion on the heels of its business continues to increase.

The company's sales and net earnings for 1965 were the highest in history with sales and rents totaling \$206,941,000, a 19 per cent increase over the \$206,668,000 in the prior year.

Net earnings rose to \$8,404,000 in 1965, an increase of 28 per cent over the \$6,575,000 in 1964, the previous record year.

Net earnings per common share after preferred dividends were \$1.08 based on 2,475,176 shares outstanding at the end of business in 1965.

This compared with net earnings of \$2.59 in 1964, adjusted for the 1965 four per cent stock dividend and a 3 for 2 stock split. Net earnings and the special item totaled \$3.24 per common share in 1965.

Evans has long been the nation's leading designer and manufacturer of equipment designed to prevent damage to railroad freight cars and lading.

In addition to an increase in volume of sales for this equipment, the company's freight car construction facility originally built in September 1964 has undergone the two major expansions listed above to meet railroad and shipper needs.

In addition to building rail cars and producing railway and truck-damage prevention equipment, Evans is also a manufacturer of other industrial products.

Its operations include three other divisions engaged in the manufacture of building materials, plywood, plywood and fibre products, all of which it distributes nationally.

It has a building materials group headquartered in Portland, Ore. and a precast concrete division centered in Minneapolis.

Evans has long been the nation's leading designer and manufacturer of equipment designed to prevent damage to railroad freight cars and lading.

In addition to an increase in volume of sales for this equipment, the company's freight car construction facility originally built in September 1964 has undergone the two major expansions listed above to meet railroad and shipper needs.

In addition to building rail cars and producing railway and truck-damage prevention equipment, Evans is also a manufacturer of other industrial products.

Its operations include three other divisions engaged in the manufacture of building materials, plywood, plywood and fibre products, all of which it distributes nationally.

It has a building materials group headquartered in Portland, Ore. and a precast concrete division centered in Minneapolis.

Evans has long been the nation's leading designer and manufacturer of equipment designed to prevent damage to railroad freight cars and lading.

In addition to an increase in volume of sales for this equipment, the company's freight car construction facility originally built in September 1964 has undergone the two major expansions listed above to meet railroad and shipper needs.

In addition to building rail cars and producing railway and truck-damage prevention equipment, Evans is also a manufacturer of other industrial products.

Its operations include three other divisions engaged in the manufacture of building materials, plywood, plywood and fibre products, all of which it distributes nationally.

It has a building materials group headquartered in Portland, Ore. and a precast concrete division centered in Minneapolis.



Bernard F. Smith

Livonian Promoted

Livonia resident Bernard F. Smith has been appointed supervising engineer of relay performance for Detroit Edison's electrical system department.

A veteran of two years service with the United States Navy, Smith completed work toward an electrical engineering degree at the University of Detroit following World War II. He was affiliated with Eta Kappa Nu, national electrical engineering honor society, while at U.D.

He joined Detroit Edison's electrical system department in May, 1951, and was a staff engineer at the time of his recent promotion.

Smith is a registered professional engineer and is a member of the Institute of Electrical and Electronics Engineers. He and his wife, Marion, have three sons, Stephen, Gregory and Michael. The family home is at 29814 Oakview Drive in Livonia.

Evans Earnings, Sales Set Mark

Portland, Ore. — Evans Products Company's sales and net earnings for 1965 were the highest in the company's history, according to a preliminary report issued by L. L. Wygal, Executive Vice President, Finance. Sales and rents in 1965 were \$206,941,000, a 19 per cent increase over \$206,668,000 in the prior year.

Net earnings rose to \$8,404,000 in 1965, an increase of 28 per cent over \$6,575,000 in 1964, the prior record year. In addition, the company reported a special item of non-recurring income for 1965 of \$5,364,000 representing gain after income taxes on sale of timber and related facilities, making aggregate net earnings and special item of \$13,768,000.

Net earnings per common share after preferred dividends were \$3.08 based on 2,475,176 shares outstanding at Decem-

ber 31, 1965. Net earnings per share for 1964 were \$2.50, adjusted for the 1965 four percent stock dividend and 3-for-2 stock split. Net earnings and the special item totaled \$5.24 per common share in 1965.

During the last quarter of 1965, Evans reported the acquisitions for cash of United States Railway Equipment Company, Chicago Railway Equipment Company, C. Capp Manufacturing Company and International Acceptance Corporation. Operations of these businesses are included in 1965 results since dates of acquisition.

In addition, acquisitions for stock during 1965 include Moore's Super Stores, Inc., Williamson Veneer Company and R and A Acceptance Corporation, which have been accounted for as poolings of interests, and 1964 figures have been restated to give effect to this treatment.



William K. Pence

Bill Pence Promoted By Edison

William K. Pence, 14920 Meadow Lane, Plymouth, has been appointed supervising engineer of relay applications for Detroit Edison's electrical system department.

A native Detroit, Pence attended Catholic Central High School and, following three years Army service during World War II, earned an electrical engineering degree at Lawrence Institute of Technology. He is an associate member of the Institute of Electrical and Electronics Engineers and has been active in the Institute's local chapter.

He joined the relay division of Detroit Edison's electrical system department in 1952. For the past year he has been supervising engineer of relay performance for the division.

Pence and his wife, Rita, are members of the Newcomers Club in Plymouth. They have two children — Karen and Robert.

Lincoln Sales Show Gains

Comet, Mercury and Lincoln sales reached record levels. Deliveries of the division's luxury cars were 2,362, a gain of 42 per cent over the record of 1,659 set last year.

Comet sales for the period were 4,350, up 6 per cent over a year ago's 4,115 and Mercury deliveries were 5,453, 15 per cent above the 4,761 sold in 1965. Total Mercury sales, including Comet and Mercury, were 9,803, 10 per cent above the former record of 8,970 sold in 1965.

For the 4th consecutive 10-day period Lincoln Continental

sales reached record levels. Deliveries of the division's luxury cars were 2,362, a gain of 42 per cent over the record of 1,659 set last year.

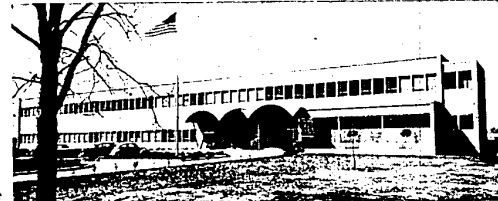
Comet sales for the period were 4,350, up 6 per cent over a year ago's 4,115 and Mercury deliveries were 5,453, 15 per cent above the 4,761 sold in 1965. Total Mercury sales, including Comet and Mercury, were 9,803, 10 per cent above the former record of 8,970 sold in 1965.

For the 4th consecutive 10-day period Lincoln Continental

sales reached record levels. Deliveries of the division's luxury cars were 2,362, a gain of 42 per cent over the record of 1,659 set last year.

Comet sales for the period were 4,350, up 6 per cent over a year ago's 4,115 and Mercury deliveries were 5,453, 15 per cent above the 4,761 sold in 1965. Total Mercury sales, including Comet and Mercury, were 9,803, 10 per cent above the former record of 8,970 sold in 1965.

For the 4th consecutive 10-day period Lincoln Continental



CONSUMER POWER activities in the Livonia plants and other items set handled in this area are supervised out of this modern district headquarters building on Farmington Road near Plymouth. Consumer services, con-

Raymond Golen Gets New Insurance Post

Raymond J. Golen of Livonia, has been appointed assistant brokerage manager of the Detroit branch office of a life insurance company of California.

Golen is a graduate of the University of Detroit, and a member of the Detroit Life Underwriters Association.

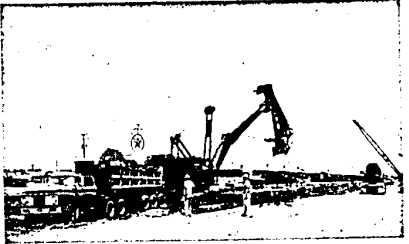
He and his wife, Mary Lou, live with their twin daughters, Karen and Kathleen, at 14234 Nola in Livonia.

In Our 29th Year! Greenfield Construction Company

Angelo DiPonio, President

- HIGHWAY CONSTRUCTION
- HEAVY CONSTRUCTION
- SEWER and WATER MAINS

A Recognized Good Neighbor in Livonia Since 1963



GREENFIELD CONSTRUCTION CO.

Angelo DiPonio, PRESIDENT

13040 MERRIMAN ROAD, LIVONIA, MICH.

Farmington Man to Head GM Section

Appointment of Thomas C. Naquin of Farmington, Detroit regional director of the Fleet Section of the Marketing Staff was announced today by John J. Owens, director of General Fleet Section.

He succeeds Charles B. Pinkstaff who was recently promoted to assistant director of the Fleet Section of the Marketing Staff. The appointment becomes effective February 1.

Naquin was born in St. Louis, Mo. NAQUIN where he attended elementary school. He received his high school education in Denver, Colorado, and graduated from the University of Colorado with a B.A. degree in business administration.

He joined General Motors Acceptance Corporation as a field representative in April, 1950. Three years later he was named parts and accessories representative for the Chevrolet Motor Division of GM in Des Moines and shortly thereafter was named Des Moines district manager for Chevrolet.

He was transferred to Peoria, Ill., as Chevrolet zone business manager in September, 1956. In January, 1962, he was assigned to Chevrolet Central Office staff as assistant manager of Dealer Organization and Analysis Dept.

He is married and the father of two daughters and one son and resides at 3018 Eleven Mile Road in Farmington.

Scouts Learn Arctic Living

Boy Scouts of Troop 760, Livonia, participated recently in Arctic survival and rescue programs for winter camping, tent pitching, tracking, fire building, ice and cliff rescue. Those who took part were: Charles Thauvette, Paul Goodsmith, Randy Larowe, Larry Hagstrom and Joel Goldstein. Charles Hagstrom and Clifford Lawrence, scoutmaster, assisted them in the project.

View of Plymouth, Michigan Plant

AGRICULTURE

AUTOMOTIVE

GROWTH IS IN THE AIR

Evidences of healthy and attractive industrial growth are everywhere. Much of this expansion is due to the rapid growth in technology. Anchor is justly proud of the part it is playing in all of the technical phases of transmitting hydraulic power.

From Anchor's new Research Center in Libertyville comes a steady stream of ideas and developments for its world-wide market.

Agricultural, Construction, Automotive, Machine Tool and Industrial Users all benefit from Anchor's technological output.

Anchor's new ideas and new products mean continued growth and an even greater contribution to the overall economic base of the community as a whole.

ANCHOR

COUPLING COMPANY, INC.

342 North Fourth St., Libertyville, Illinois 60048

Branch Plants: Plymouth, Michigan • Dallas, Texas
Los Angeles, California • Wilmington, Delaware • Atlanta, Georgia
and Anchor Coupling Canada Limited, Brantford, Ontario

INDUSTRIAL

MACHINE TOOLS

CONSTRUCTION