

Edison Income Up 11.3 Pct.

Detroit Edison's 63rd Annual Report, issued March 15 to the company's 115,000 shareholders, shows 1965 as a year of highly successful results and looks to 1966 and beyond with encouraging prospects.

Walker L. Cislak, chairman of the board of directors, and Donald F. Kiger, Edison president, point out in the report that the company's total revenues of \$83,330,850 represent an increase of 6.0 per cent over those of 1964 and attribute much of this gain to the high level of economic growth which prevailed in Southeastern Michigan throughout the year.

The company's net income—the overall measure of success—amounted to \$7,564,259 for 1965, an increase of \$3,840,722, or 11.3 per cent over the previous year. In terms of earnings per share of common stock outstanding this amounts to \$2.00 for 1965 as compared to \$1.80 for 1964.

The two Edison officials also noted that in 1965 the company again had achieved its traditional corporate goal of balanced progress, sharing the benefits of economic planning with Edison customers, shareholders, employees and the public in general.

Effective December 1, 1965, electric rate schedules were revised downward affording a reduction of about \$4.5 million a year, applicable mainly to industrial customers. A general revision of schedules in late 1964 reduced the cost of electricity service to residential and commercial users by about \$4.8 million in 1965.

In November, 1965, the company announced an increase in the quarterly dividend from 32.5 cents per share to 35 cents a share.

The higher dividend was payable January 15, 1966.

Edison employees benefited by a 3.0 per cent general pay increase which raised the per-hour average for hourly and weekly paid employees to \$3.82.

Total expenses for the year were \$291,531,759 as compared to \$276,511,430 for the preceding year.

Although 7 per cent less than the previous year, Federal, State, and local taxes totaled \$72,546,711. It was the largest expense item. A reduction in the Federal income tax rates to 48 per cent, and downward adjustments in other taxes accrued in the prior year for some taxes paid in 1965, accounted for the slight decrease.

The cost of fuel and purchased power increased 14.3 per cent to reach \$71,656,385.

The third largest expense was wages in salaries which totaled \$70,004,781, up 8.7 per cent over the previous year.

During 1965 Detroit Edison established records in all electric system operations.

Total electric energy output for the year reached an all-time high of 22.4 billion kilowatt hours—3 per cent above the 1964 total and 45 per cent higher than the annual output of five years ago.

The highest peak demand ever recorded on the system was reached at 8 p.m. on Monday, December 20, when system demand was 4,041,000 kilowatts. Also, for the second year the summer peak exceeded the previous winter peak.

Electric energy use by residential customers totaled 5.3 billion kilowatt-hours, an increase of 8.0 per cent over the previous year. This increase in customer use was the largest annual gain in the history of the company and raised average annual use per domestic customer to 4,333 kilowatt-hours.

The report also noted that the projected increasing demand for electric service has required an unprecedented capital expansion program. In 1965, the gross additions to plant were \$3,000,422, an increase of \$24,000,000 over the amount spent in 1964. In 1966 the company plans to spend \$122 million as part of a five-year construction program estimated at a cost of well over \$500 million.

Franklin and Bentley Bands Finish High

The Bentley High band, under the direction of Robert A. Clark, and the Franklin High band, under the direction of Roy E. Ernst, received straight "1" ratings in the band festival sponsored by District Twelve of the Michigan School Band and Orchestra Association March 5.

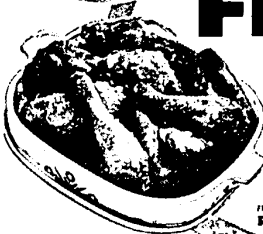
Only three other bands in the AA classification, Grosse Pointe, Belleville and Ann Arbor received "1" ratings.



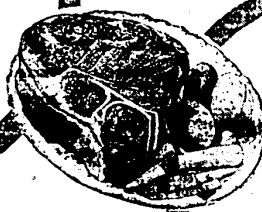
KROGER PRICED MEANS

LOWER-PRICED...

LOW PRICES, HIGH QUALITY PLUS TOP VALUE STAMPS!



SWIFT'S PREMIUM TENDER-GROWN WHOLE
FRESH FRYERS
29 LB.
 FRESH 3 LBS. AND UP ROASTING CHICKEN 11.39



U.S. CHOICE-TENDERAY
BEEF RIB ROAST
 4TH & 5TH RIBS
79¢

SEMI-BONELESS HAMS
 WHOLE OR HALF
79¢ LB.



CHOICE BLADE CENTER CUT
CHUCK ROAST
49¢ LB.

FREE THIS WEEK!
Town 'n' Country
OVEN MITT
 WITH MAILER COUPON AND PURCHASE OF ONE AT 69¢

CENTER CUT RIB
PORK CHOPS
79¢ LB.

EMBASSY BRAND
SALAD DRESSING
 OT. JAR **33**¢ SAVE 6¢

KROGER BRAND
MACARONI OR SPAGHETTI 3 LB. PKG. **49**¢
 FLAVORFUL & PURE—SAVE 10¢
BORDEN'S SOUR CREAM . . . PINT **39**¢
 FROZEN APPLE, CHERRY OR PEACH
MORTON FRUIT PIES . . . 1-LB. 4-OZ. PKG. **29**¢
 STRAINED VARIETIES
HEINZ BABY FOOD 3 4-OZ. JARS **25**¢



FRESH ROASTED SPOTLIGHT
COFFEE
 1-LB. BAG **59**¢ SAVE 10¢
 3-LB. BAG \$1.75 SAVE 24¢

5 VARIETIES
KROGER CAKE MIXES
 1-LB. 3-OZ. PKG. **23**¢

FROZEN BEEF, CHICKEN OR TURKEY
MORTON POT PIES
 5 8-OZ. WT. PKGS. **89**¢



BORDEN'S SHERBERT OR
COUNTRY CLUB ICE CREAM
 1/2-GAL. CTN. **49**¢
 SAVE 10¢

DEL MONTE SALE! FRUIT COCKTAIL
 1-LB. 1-OZ. CANS **4** **99**¢
PEAS OR GREEN BEANS
 1-LB. CANS **5** **99**¢

WHITE OR COLORED
DELSEY TOILET TISSUE . . . 8 ROLLS **89**¢
 KROGER FRESH BAKED—SAVE 11¢
SANDWICH OR WIENER BUNS 2 4-CT. PKGS. **39**¢
 VEGETABLE VARIETIES
CAMPBELL'S SOUP 10 10-OZ. CANS **13**¢
 SUN GOLD BRAND—FRESH
SALTINE CRACKERS . . . 1-LB. PKG. **19**¢



BUTTERMILK VARIETY
MEL-O-SOFT WHITE BREAD
 1 1/2-LB. LOAVES **5** **1** SAVE 25¢

GREEN PEPPERS EACH
RED RADISHES EACH
GREEN ONIONS BUNCH
FRESH PARSLEY BUNCH
 YOUR CHOICE **10**¢

KROGER FRESH MEDIUM SIZE
GRADE "A" EGGS
 2 DOZEN **95**¢

RED RIPE
FRESH STRAWBERRIES . . . OT. **59**¢
 SALAD SIZE VINE RIPE
TOMATOES 3 LB. **69**¢
 FRESH CRISP
ENDIVE LETTUCE 2 HEADS **29**¢



RUBY RED OR MARSH SEEDLESS
GRAPEFRUIT
 OR VALENCIA
ORANGES
 1-LB. BAG **8** **69**¢

U.S. NO. 1
RUSSET POTATOES
 1-LB. BAG **20** **99**¢

LAUNDRY DETERGENT
GIANT DASH 24L. 3-OZ. BT. 71¢
 REGULAR SIZE
SAFEGUARD 2 GAL. 31¢
 15¢ OFF LABEL
TOP JOB OT. BT. 80¢
 FOR DISHES
JOY LIQUID 1PT. 4-OZ. BT. 57¢
 22¢ OFF LABEL
MR. CLEAN 1PT. 15-OZ. BT. 37¢

2¢ OFF EACH BAR BATH SIZE
CAMAY SOAP 3 BARS 37¢
 REGULAR SIZE
IVORY SOAP 8 BARS 11¢
 FOR FINE WASHABLES
IVORY FLAKES 24L. PKG. 81¢
 CLEANS DIRTY HANDS FAST
LAVA SOAP 100. 3/24 BARS 13¢
 GIANT SIZE
DUZ SOAP 24L. 3-OZ. PKG. 83¢

50 TOP VALUE STAMPS
 WITH THIS COUPON ON
 7-FL. OZ. CAN
LYSOL SPRAY DISINFECTANT
 Valid thru Saturday, March 19, 1966. A

25 TOP VALUE STAMPS
 WITH THIS COUPON ON
 ANY TWO PKGS.
EMBASSY NUT MEATS
 Valid thru Saturday, March 19, 1966. B

75 TOP VALUE STAMPS
 WITH THIS COUPON ON
 1-LB. 11-OZ. GEMMA CHOCOLATE OR 1-LB. 9-OZ. BANANA
COUNTRY OVEN LAYER CAKE
 Valid thru Saturday, March 19, 1966. C

50 TOP VALUE STAMPS
 WITH THIS COUPON ON
 2 PKGS. CUT-UP FRIERS, 2 PKGS. FRYER PARTS OR 2 ROASTING CHICKENS
ECKRICH SMOKEES
 1-LB. PKG.
 Valid thru Saturday, March 19, 1966. D

25 TOP VALUE STAMPS
 WITH THIS COUPON ON
ECKRICH SMOKEES
 1-LB. PKG.
 Valid thru Saturday, March 19, 1966. E

We reserve the right to limit quantities. Prices and items effective at Kroger in Detroit and Eastern Michigan thru Saturday, March 19, 1966. None sold to dealers. Copyright 1966. The Kroger Co.