

# Schoolcraft Takes Giant Step In Move Towards Accreditation

## RAILROAD TIES

From \$1.49 to \$3.49 — 4-Sizes FOR THAT NEW TERRACE OR RETAINING WALL 6"x8"x8'6" \$3.49

### TAPERED TIES

- Use Around Trees
- Build a New Patio

# \$179

CASH & CARRY

STORE HOURS:  
Mon. thru Wed. 8-6  
Thurs. & Fri. 8-9  
Sat. 8-5:30  
Sun. 10-4

**Hardware & Supply Co.**  
EIGHT MILE and MERRIMAN ROADS  
LIVONIA 476-6240

537-2645

Schoolcraft College, which is nearing the close of its second full year of operation, took a giant step towards accreditation when the North Central Association of Colleges and Secondary Schools admitted the college to candidacy for membership.

## The Observer

LIVONIA OBSERVER FARMINGTON OBSERVER  
PLYMOUTH OBSERVER NANKIN OBSERVER

REDFORD OBSERVER  
GARDEN CITY OBSERVER

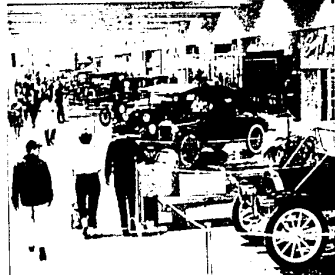
Wednesday, April 8, 1968 Page ★ 1-B

## Building Trades Executive Raps Labor Shortage

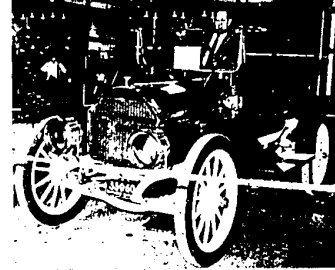
"Contrary to what many people believe, there is not an acute labor shortage in this area." This somewhat startling statement was made by Jack Wood, executive secretary of the Detroit Building and Construction Trades Council.

Wood was the guest speaker of the United Northwestern Realty Association — Western Wayne-Dakota County Board of Realtors, at their weekly luncheon meeting.

Wood explained that during the recession period following 1966, much of the skilled labor was forced to move to other parts of the country to get employment. Also the automotive industry, offering higher wages and the promise of steady work, drew some of the labor away from the field.



MEMORIES OF pre-depression days were recalled at the Livonia Mall when 17 antique cars, belonging to members of the Veterans Motor Car Club of America, Huron Valley chapter, were on display in the main enclosed mall area. Thousands of patrons of the shopping center viewed cars of the past and recalled nostalgic memories of their youth. (Below) Oldest car in the exhibit was a 1910 Rural shown with Jerry Silberman, president of the Livonia Mall Merchants Association, at the wheel.



## COLONIAL

"SEE IT IN THE WINDOW"

EASTER WEEK ONLY!  
NINE PIECE LIVING ROOM SUITE  
Sofa, loveseat, chair, ottoman,  
Gold green tapestry cover, arm chair,  
spring seat, ottoman, lamp, rug,  
etc., with reversible 1 1/2" cushion,  
made trim in lime green. Maple top  
in an lustrous, round top, oval end  
and table with drawer, all with formal top.  
Two decorative lamps. Two brush stroke reproduction  
Early American pictures.

Large choice of decorator fabrics. \$349

NO DOWN PAYMENT \$3.75 PER WEEK

## Berry's Furniture

Division of Berry's Home Supply

25950 W. 5th Mile Road, West of Beach — KE 2-5933

OPEN Monday, Thursday, Friday, Saturday, 10 a.m. to 9 p.m.  
Tuesday, Wednesday, 10 a.m. to 6 p.m.

The approval came last week following a hearing in Chicago when Schoolcraft President Dr. Eric Bradner and Vice President John Brian presented the case before the Commission on Colleges and Universities. Pleased with the Commission

action, Dr. Bradner said Schoolcraft is not only a self-study appraisal and additional campus visits by NCA groups to become eligible for accreditation in the spring of 1968. "We feel proud that Schoolcraft could make such tremendous strides in such a short period of three years," he said. "That is the minimum time allowed by the NCA for the Commission to approve or attest to the progress of the college."

The college is required to make a self-study of future and present analysis for presentation to the NCA Board by June 1, 1967 at which time final action will be taken on Schoolcraft's request for accreditation.

With the self-study a must, Dr. Bradner and Vice President Brian already have set up committees to work on the various facets of the report.

The group will be headed by Brian, Consultants Miss Lois Wilson, retired dean, and Dr. Robert W. Ray from Iowa State University, who represents the NCA.

The coordinating committee includes: Messrs. Stenger, Kleckner, Galt & Hill, Ryan, Lockwind and Cassidy, and Mrs. Galt, an editing Board of Mr. Perkins, Mrs. Marita and Mrs. Mages, all members of the faculty.

There will be six sub-committees working on the project in the fields of Library, Faculty, Finance, Physical Plant, Curriculum and Institutional and Student Personnel Service.

Dr. Bradner and Brian had answers for all questions tossed at them by the NCA commission at the hearing.

They told how the salary scale to the professional staff had been improved; agreed that the availability of a secretarial pool was limited but steps have been taken to improve; agreed that more clerical and secretarial help should be provided for the business office; told how the food service would be improved in the fall by the opening of facilities under the supervision of the NCA group that visited the campus and set the stage for the Chicago hearing, said.

## Stempien Bill Would House Governor

State Representative Marvin R. Stempien (D., Livonia) has introduced a bill in the House which could cause the dreams and planning of many years to materialize in the form of a modern residence for Michigan Governors, with all citizens of Michigan participating in the project.

"Fulfillment of this long-recognized need would implement Michigan's new state constitution which stipulates that 'an executive residence, suitably furnished, shall be provided at the seat of government for the use of the Governor,'" Stempien said.

"After nearly 130 years of Michigan statehood, it was not until last year that a governor received even an allowance for living expenses. The sum of \$5,000 was then included in the budget for this purpose and this same sum is in the current budget."

"My bill No. 3972 would establish a State Executive Residence Planning Commission which would review all former building proposals, the various sites which have been suggested, formulate new plans and authorize the Department of Administration to build an executive residence."

## Inmates Worry About Safety

LANSING—Even the men behind bars are worried about Michigan's traffic safety problems.

There isn't a day goes by that Secretary of State James M. Hare doesn't get letters from persons proposing solutions to Michigan's accident problems. And he gets some unusual ones.

Recently, he received a tip from an inmate in Jackson prison who had some strong ideas about solving the accident problem. This letter becomes even more unusual when it is revealed that the writer is a long-terminer, serving up to 15 years for armed robbery and is not likely to be driving much in the near future.

The suggestion is a simple but drastic one, Hare said. The inmate would have Michigan adopt a law that in cases of serious traffic violations the police would have the power to immediately impound the violator's car.

in operation only a short period of time, it displays characteristics of realistic planning and orderly growth. Fundamentally, this institution is based on a sound educational philosophy oriented to the unique functions of a community college.

In light of this, the College Board of Administrative Officers have attempted to build facilities and identify faculty members that would facilitate the implementation of programs which are peculiar to this type of institution.

The examiners were of the opinion that the College has already acquired the needed momentum to develop excellent programs in many curricular areas.

If funds are provided for facilities in physical education, there is reason to believe that in a short period of time (because of its present orientation and leadership), this College should become the kind of institution which can serve its area very adequately.

In the final analysis, it must be stated that the strong aspects of this College are found in the crucial areas of any given educational enterprise. It has a board of control made up of knowledgeable individuals.

# ACT NOW

## for Spring Discounts

LINDY Says: "SERVICE COMES FIRST REGARDLESS OF OUR LOW PRICES"

### SUPER KEM-TONE

All Colors \$4.29  
Fresh Stock

### 10-6-4 FERTILIZER

Covers 1/2 Acre  
5,000 Sq. Ft. \$1.79

### 6-TRANSISTOR RADIO

\$2.95

## MOTOROLA

### Rectangular Color TV

in compact cabinets

Early American Console, 27" overall  
diag. tube meas.: 27 1/2 sq. in.  
picture viewing area. Model 21CT108. Priced For Everyone

### IN COMPACT CABINETS

## Rectangular Color TV

Compact Table Model.  
(27" overall diag. tube meas.: 27 1/2 sq. in. picture viewing area). Model 21CT108. PRICED LOW

### MOTOROLA CLOCK RADIOS

AT GREAT SAVINGS

MODEL XG 108

## ZENITH REMOTE PORTABLE 21" TV

Space Command remote control! No printed circuits. UHF-BHF 20,000 volt picture power! Low cost. "Priced Low!"

Model 2170W

## BERRY'S HOME SUPPLY

BERRY'S STORE and WAREHOUSE OUTLET  
27419 JOY ROAD at Inkster Road

### LOW SUDS DETERGENT

50-Lb. \$6.48  
Bag

### HOVER BAGS . . . 49c

### 10-LB. CHARCOAL 49c

### NORELCO SHAVER

W/Sideburn \$16.95  
Clipper

### WALKIE TALKIES

All \$9.95  
Transistor 1/2 Fr.

### HAND MIXER

Hamilton \$6.95  
Beach

### BISELL RUG SHAMPOO

1/2-Gal. \$2.29  
Size

## ZENITH

### COLOR TV

### GE HAIR DRYER \$9.95

### GE CLOCK RADIO \$10.95

### DOMINION TOASTER OVEN \$7.95

### GE HAIR DRYER \$119

### RCA WHIRLPOOL DEHUMIDIFIER

With Humidistat \$59.95

### RCA WHIRLPOOL AUTOMATIC WASHER \$129

### GE DISHWASHER

Model \$114

### PHILCO

15 Cu. Ft. \$169.98  
Freezer

### RCA VICTOR COLOR TV

RECTANGULAR TUBE  
Early American \$469

### ZENITH 23" LOWBOY TV

SAVE \$178.00  
Now Only

### SYLVANIA 21" COLOR TV

All New  
1966 Model \$389.50  
Walnut Console

### GE WASHER \$158

2-Speed

### GE UPRIGHT FREEZER \$158

### FRIGIDAIRE REFRIGERATOR

12 Cu. Ft. Deluxe Model \$168

## BERRY'S HOME SUPPLY

BERRY'S STORE and WAREHOUSE OUTLET  
27419 JOY ROAD at Inkster Road

KE 5-5060 or GA 1-1717  
Open 9:30 a.m. to 9 p.m. Daily  
Closed Sunday