

# Festival To Climax With Parade



TV STAR Marta Kristin attended the 1966 Founders Festival. Here Miss Kristin, the daughter of Mr. and Mrs. Harold O. Soderquist of 25340 Orchard Lake Rd., rides in the Festival Parade. Miss Kristin received an achievement award for her work in the entertainment field.

## Jaycees To Take Dunking

If the weather is as hot during the Founders Festival as it was last week, the Jaycees may be glad they decided to man their own dunking game at their display in the Downtown Shopping Center. The contraption—familiar to most carnival midways—features an individual sitting above a pool of water, and the object is to give him a dunking by hitting a target with a tasse-

ball. This springs the trap and down he goes. There have been days recently when some Farmingtonites would have fought for the privilege of sitting on the board. The Jaycee booth will be located behind the Metropolitan Bank, and a second feature will be the sale of soft drinks, hot dogs, kielbasa and chicken box lunches.

## Offer Free Visual Screening

The Farmington Township Lions Club and the Michigan Optometric Association have arranged for a trailer for free visual screening sessions during the Farmington Founders Festival.

The sightmobile will be located behind Himespack's Restaurant during the three festival days, July 25, 26 and 27. The screening will indicate whether further eye testing is needed and will not be a visual examination or an eye test. Screening instruments will be supplied by the Lions Club and the auxiliary of the optometric association.

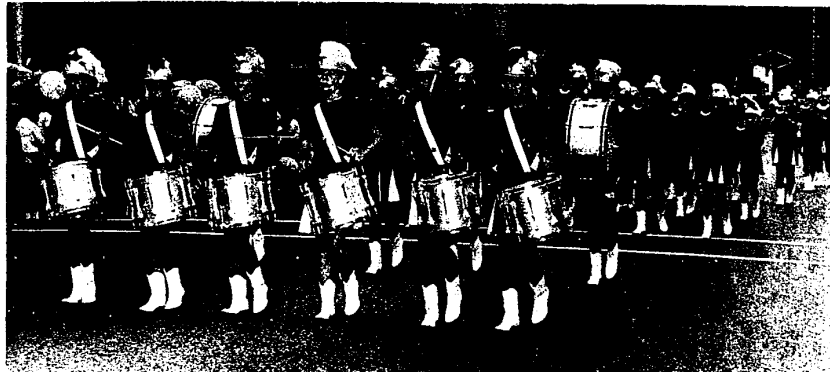
Blaring bands and strutting majorettes, gaily decorated floats and prancing horses will convert Grand River Ave. into a colorful parade setting Saturday morning for the traditional climax to the Farmington Founders Festival.

The 1968 parade will form at the drive-in theatre at the eastern fringe of the city, and the first units will begin their march westward at 10 a.m. The parade route will carry along Grand River to that thoroughfare's juncture with Farmington Rd., a distance of near-

by a mile and one-half. Grand Marshal for this year's event will be U.S. Rep. Jack McDonald, 19th District congressman. Also riding in positions of honor will be city, township and civic leaders as well as governmental officials from neighboring communities.

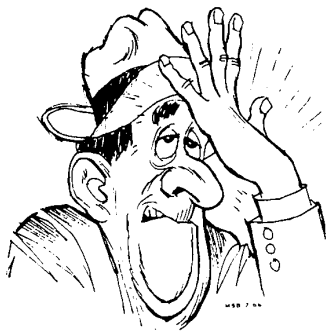
Co-chairmen Ed Reaume and Janet Dicks have announced that among the units in the parade will be seven bands, nine floats, a number of antique cars, an Air Force missile display, the Farmington Township Mounted Police, a troupe of St. Bernard dogs, clowns and twirlers galore.

The Queen of the Festival and members of her court will ride on a special float in traditional fashion to receive the salute of the thousands of spectators due to line the full route. Trophies will be presented to the sponsors of outstanding parade units in special ceremonies to be held at the stage in the Downtown Shopping Center following the parade. Judges and special guests will occupy an official reviewing stand to be located at Grand River and School St.



MUSIC, MUSIC, MUSIC—That's what's needed in a parade. Last year this helmeted group marched with military precision down Grand River and still managed to look very feminine

during the Founders Festival Parade. This year's parade begins at 10 a.m. Saturday, July 27.



### Don't Make a \$300<sup>00</sup> Mistake

Check Roger Peck Chevrolet before you buy your next car or truck.

### Roger Peck Chevrolet Compliments

the Farmington Community on their Annual FOUNDERS DAY FESTIVAL

Don't fail to see

"The Fastest Gun Alive"

**JOE BODRIE**

at the Farmington Founders Festival



This is where the customer is No. 1  
**ROGER PECK CHEVROLET**  
Be smart...be sure...buy Chevrolet  
32715 Grand River

Near Downtown Farmington

GR4-0500



When you write checks by the dozen...

## IT'S GOOD TO KNOW WE'RE IN YOUR CORNER

A check for the grocer. The druggist. The telephone company. The more checks you write, the more your checking account can cost you. But not a Manufacturers Personal Checking Account. As long as you maintain a minimum balance of \$200...or an average balance of \$500...you pay no service charges. Not ever.  Get all the facts on a Personal Checking Account at any Manufacturers office. From Farmington to Carlton and everywhere in between, chances are there's one right around the corner from where you are now.  If you write checks by the dozen, start saving now at Manufacturers...the bank that's always in your corner. Member Federal Deposit Insurance Corporation.

### MANUFACTURERS BANK

• ORCHARD LAKE — THIRTEEN MILE • GRAND RIVER — HALSTEAD • NORTHWESTERN — INKSTER • EIGHT MILE — FARMINGTON