



# Timely Tips on

## GARDENING

By Betty Frankel

### VIBURNUM

What plant has foliage that resembles little maple leaves, fruits that look like clusters of small cherries, and flowers that are like lacy pinwheels? The answer, of course, is the viburnum known as the high bush cranberry, one of the choicest ornamental shrubs. It is spectacular at this season, but is only one of many types of viburnums that thrive in this area. All are handsome shrubs.

The American high bush

cranberry (*Viburnum opulus* variety *americanum*) is also known as *V. trilobum* and the European cranberry bush (*V. opulus*) are very similar species that are equally beautiful. They both have an ultimate height of ten to twelve feet, but the American species is a more open spreading shrub. The attractive lobed leaves are a rich green during the summer and turn scarlet in the fall.

In May and June the branches are studded with wheel-shaped clusters of white flowers that are composed of two types. Small creamy fertile flowers are in the center surrounded by a ring of large pure white sterile flowers.

By July the shrubs are laden with heavy clusters of shiny berries that are already turning red. By September the berries have become glossy and are bright scarlet. They cling to the shrubs for many months and add a wonderful note of color to the winter garden as they are high-lighted against the snow.

The acid-tasting berries are not especially favored by birds, but by late winter flocks of cedar waxwings will descend on the shrubs and spend a week or two stripping the fruit from the branches.

Two other hardy viburnums have red fruit. *Viburnum dilatatum*, known as Linden viburnum or Japanese cranberry bush, has coarsely toothed, roundish leaves that come abruptly to a short point. *Viburnum theiferrum* is a somewhat coarsely textured shrub with rather undistinguished flowers but has the most splendid fruit of all viburnums.

There are viburnums that have amber hued or golden fruit. *Viburnum theiferrum* has such a special variety as does the high bush cranberry and Sargent's viburnum. The many other viburnums have clusters of blue or black fruits. Although some viburnums have flowers that are flat pin-

wheels of bloom, others have flowers that are clustered into round balls. Included in the latter category are the snowballs, which are popular spring-blooming shrubs.

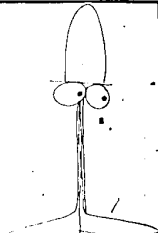
The common snowball is attractive but is often attacked by aphids. The Japanese snowball (*V. tomentosum* var. *plenum* or *sterile*) and the Chinese snowball (*V. macrocephalum* var. *sterile*) have large globes of white flowers and are disease and insect free.

Among the hybrids are the delightfully scented *Viburnum Carlesii* which can perfume the entire garden in early Spring. *Viburnum Carlesii* is an offshoot of this variety and is considered an even choicer garden plant. *V. Burkwoodii* is noted for its sweet scented flowers and its handsome lustrous foliage that remains on the plant until very late in fall.

There are many other attractive viburnums. All make a definite contribution to the garden. They can be used in the mixed shrub border, as a screen, lining a road or long driveway, or as single specimens on the lawn. Most are strong-growing tall shrubs, but some can be trained to grow with a single trunk as a small tree. They will grow in almost any soil and in almost any location and can be depended upon to provide beauty throughout the year.

### REMINDERS

Complete evergreen planting as soon as possible. . . . Last call to seed lawns or repair bare patches. . . . Finish dividing perennials. . . . Plant little bulbs for early Spring bloom. . . . When leaves begin to color on deciduous trees and shrubs it is safe to move them. . . . Pull up and burn spent annuals. . . . Order lily bulbs and roses for late fall planting. . . . Plant hardy mums where they can be enjoyed from the window of a much used room or to brighten the doorstep.



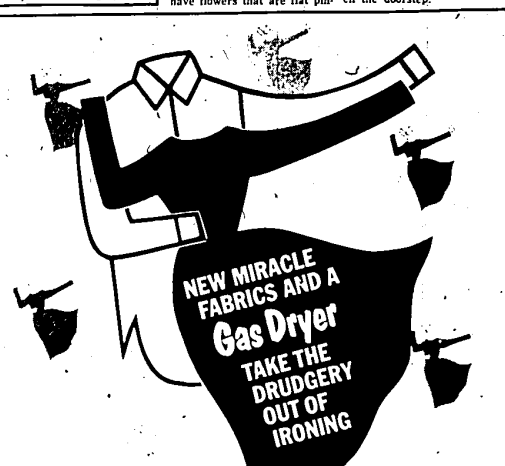
### DO YOU HAVE ANYTHING IN COMMON WITH THIS COMMON OVERSIGHT?

He knows State Farm is the world's largest car insurer, but he's overlooked the fact that we're also one of the largest homeowners insurers, and the fastest growing big life insurance company!

Call me today. And find out why, when you say State Farm, you've said a good deal!

FRED P. SAMRA  
32300 Grand River  
GR. 6-1880

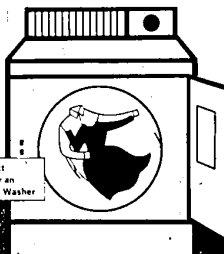
STATE FARM INSURANCE COMPANIES  
Haupt Office: Bloomington, Illinois



NEW MIRACLE FABRICS AND A Gas Dryer TAKE THE DRUDGERY OUT OF IRONING

# Waltz thru Washday!

Cut ironing time with a work-saving GAS DRYER



The Perfect Partner for an Automatic Washer

BUY NOW AND SAVE

Bring your new "Waltz thru Washday Sale!"



NORTH FARMINGTON Raidersettes are front row (from left) Kathy Nauman, Candy Kimbrough, Nancy Wheeler, Michele Collet, Melinda Trebey, Pat Robinson, Linda Butchl. Second row: Val Lough.

Louise Tournaud, Gail Little, Joan Lazar, Sue Thomas, Betty Bacon. Back row: Colleen Kowalski, Pat Gale, Sherry Flysko, Dee Dieken, Shariy Staggitt, Kria Colson, Judy Dougherty, Denise Bushkin.

### Welding Society

Names: S. A. Colston

S. A. Colston, Manufacturing Engineering Specialist, Ford Motor Company has been elected Chairman of the American Welding Society, Detroit Section for 1966-1967.

The Detroit Section, largest of the 204 sections in the nation, will host the National Meeting and Welding Exposition in Detroit next April. Attendance at this four-day annual meeting normally exceeds 20,000 persons.

### GREATER FARMINGTON SHRINE CLUB

Meets MONTHLY - 2nd Thurs. Evening

SOCIAL HOUR - 6:30 p.m.

DINNER - 7:30 p.m.

GLENN OAKS COUNTRY CLUB

W. 12 Mile, between Orchard Lake and Middlebelt Rd.

ALL SHRINERS WELCOME

Call 474-3060 or 836-0412

HEADQUARTERS FOR  
**PLYWOOD**

The Material of a Thousand Uses

4' x 8' panels in all standard plys. Interior and Exterior types. Good one or both sides. As low as...  
**\$2.95** each

**FARMINGTON LUMBER**  
32800 GRAND RIVER GR 4-4015  
WE DELIVER

50 YEARS OF RELIABILITY

## In the Farmington Area, 1967's going to be an In year at your Quality Buick dealer's.

DENTON BUICK COMPANY 25330 Grand River



# BUICK '67

Your Quality Buick dealer says "Now!" like nobody else. He's got a line of cars new from engines to brakes to the new GM safety features. And nothing's now-er than the Buick look. You could spend a lot of time just looking. But wait till you get your hands on the keys to one of these '67 Buicks. You think they're going to be easy to give up? Come to think of it, why should you give them up? Four out of five new-car buyers pay Buick-sized prices. Make sure you get the Buick, and all the good things that go with it.