

PHONE DIRECTORY

ADVERTISING

Display — GA 2-3160
Want Ads — GR 6-7025

GENERAL OFFICE — GR 6-7025

Editorial — GR 6-7025
Circulation — GR 6-7025

THE OBSERVER NEWSPAPER GROUP, founded by Paul M. Chandler, publishing newspapers in the cities of Livonia, Plymouth, Farmington, Garden City and Westland and Townships of Plymouth, Redford and Farmington

Vol. 3 — No. 18

52

WEDNESDAY, NOVEMBER 30, 1966

33425 Grand River, Farmington

Philip H. Power, Publisher

The Observer OF FARMINGTON

This Week's Press Run
The six Observer News-
papers are Michigan's
90,700
Largest Weekly News-
paper Group. Circulation
in the entire state is
estimated at 1,000,000.
Michigan News Company,
Detroit, Michigan 48201.

This Edition
Contains
80 PAGES

Farmington 'Most Affluent' Area



JOLLY OLD ST. NICK arrived in Farmington Friday and was greeted by scores of the younger set. This little mixx seems to be more interested in the view from Santa's knee than in Santa himself. Santa will meet with Farmington's youngsters in his home in the Farmington Plaza parking lot from now until Christmas.

City Will Rezone For More Multiples

Farmington City Planners took a long hard look at the proposed zoning for the 457-acre parcel which was ac-

Court Case Delayed For Week

Judge William J. Beer has postponed the case, brought against Farmington Township by the Louis J. Detore Construction Co., for one week in order to allow the Detore attorney time to prepare his brief.

Township officials had been ordered to show cause Monday morning in the Oakland County Circuit Court why they should not be prevented from awarding a sewer construction contract to the Zell Le LaDuke Construction Co. A restraining order has

(Continued on Page 11B)

Teens Receive Cuts, Vehicle Demolished

Four Farmington teenagers escaped with cuts following an accident Nov. 23 in which their car was totally demolished.

Treated at Boistford General Hospital for severe cuts were: Richard G. Szabo, 19, of 20915 Metroview, the driver; Richard B. Miller, 16, 34800 West Eight Mile Rd.; Earl S. Campbell, 18, 34845 West Nine Mile Rd.; and Thomas L. Carr, 15, 21711 Farmington Rd.

Szabo was thrown through the window of the car in the accident.

According to the police reports Szabo was traveling south on Farmington Rd. and struck a car driven by George E. Shoebright, 74, of Milford, which was waiting to make a left hand turn onto Freedom Drive.

Neither Shoebright nor his wife, Cora, 64, were taken to Boistford. Both received minor cuts.

Police said that Shoebright was headed north on Farmington Rd. and they estimated that Szabo was traveling 65 miles per hour. They said that the skid marks were 104 feet long on the pavement.

Just south of Freedom Rd. stands a viaduct for the I-96 expressway. Szabo's vehicle stopped just short of the concrete pillar for the overpass, but did knock down an Edison utility pole.

The next meeting of the group will be held early in January.



GIVING MOM a helping hand for the Farmington Goodfellows are seven-year-old Eddie Witt and his two-year-old brother, Dave. Their mother, Sally Witt of 31528 Marblehead, is chairman of the Goodfellow Dolls. The three were at the Elks Lodge to coordinate the dolls with the Elks Toys for Tots drive.

Goodfellows Seek Toys and Names

Toys, toys, toys... that's what Bill Everhart is interested in these days. Everhart is heading up the Farmington Elks annual Toys for Tots Drive in conjunction with the Farmington Goodfellows.

He reports that toys—especially dolls—are still needed. The fraternal order is anxious to make Christmas "Merry" for the children of Farmington's less fortunate and are hard at work on their project. Due to space limitations the Elks will not be able to repair broken toys this year and thus must request that the toys be in working order when they are donated.

Donations may be dropped off at the Lodge on Grand River just east of Farmington Rd. For additional information Everhart may be contacted at 764-4934.

Sally Witt, chairman of the Goodfellow Dolls Committee, reports that a total of 120 dolls is currently being dressed by the women of the community.

When finished the dolls will be displayed at Demery's Department Store at 12 Mile and Farmington Rd. and at the Detroit Bank and Trust branch on Grand River.

In the meantime Goodfellows are still seeking the names of all needy

Survey Details Attitudes

The 144 square mile area in southern Oakland County which includes the Farmington community is the most affluent according to a study on residential location and shopping patterns in the county just released.

Prepared by the Center for Urban Studies on the Dearborn campus of the University of Michigan, the survey was conducted for the Oakland County Planning Commission.

The county was broken down into four geographical areas for the survey with the original areas of Southfield, Farmington, West Bloomfield and Bloomfield Townships comprising one section. This includes the cities of Farmington, Birmingham, Bloomfield Hills and Beverly Hills and the recreation area of Orchard Lake, Keego Harbor and Sylvan Lake.

Termed the "fastest growing part of the country" the area contains 18 civil divisions and 26 per cent of the population.

Oakland County's population rose from 254,000 in 1940 to 691,000 in 1960. It is currently estimated at 850,000 making it the state's second most populous county.

This area contains the most expensive housing in the county according to the U. of M. researchers.

Other facts cited by the researchers are: the area is 100 per cent white; more than half (59 per cent) its residents were born in Michigan while in religious preferences, 25 per cent are Catholics, 53 per cent are Protestants, 10 per cent Jewish and the remaining two per cent are "other." Most of the heads of families are between the ages of 35 and 55 with 26 per cent each falling into the 35 to 44 and 45 to 54 age groups.

Eighty nine per cent of the household heads are employed in the area, while only one per cent are not employed.

The rest are retired and housewives.

Occupations break down into the following: professional, 28 per cent; business, 31; clerical, sales and technical, 18; skilled workers, 11; and semi-skilled, laborers and service workers, 11. Three per cent are not in the labor force.

Seventy per cent of those in the labor force work for other people, while 27 per cent are self employed. This compares to the county-wide average of 60 percent and 18 percent.

The greatest percentage of the residents of the area are college graduates with 40 percent having degrees. Fifteen percent have some college education, while 37 percent are high school graduates.

Most of the families (42)

(Continued on Page 11B)

Township Planners Face 'Problem Corner' Again

A full agenda faces the Farmington Township Planning Commission when it meets Thursday, Dec. 8, at the Township Hall. The meeting, which begins at 8 p.m., is open to the public.

Resoning to allow the construction of apartment on Freedom Drive east of Ruth St. and west of Orchard Lake Rd. will be considered at a public hearing.

The so-called "problem corner" at 13 Mile and Northwestern will come under consideration again at a public hearing. The Oakland County Circuit Court has voided the residential zoning in effect at that spot and the proposal would allow for the construction of a real estate office on the slightly more than two acres.

Past proposals for this corner have included requested rezoning for apartments which has been vigorously opposed by the residents. The members of the Commission while terming the area a "problem" have refused, however, to change the zoning from the residential status.

The commission will also receive a report on the park area requirement of the Planned Unit Subdivisions and how much of this land has been or is being developed and what portion is delinquent. Township Attorney Joseph T. Brennan and Planning Consultant Charles Lemay were checking into the question and are also expected to make their report.

1967 Junior Miss Is Miss Sue Lloyd

Sue Lloyd, a senior at Farmington High School, was named as Farmington's 1967 Junior Miss Saturday at the conclusion of day long final judging at the Farmington High School.

North Farmington High students took both runner-up positions with Mary Mehl being named first runner-up, and Ava Alter the second runner-up.

Sue, who takes over the Farmington title from Michigan's Junior Miss of 1966 Bonnie Britton, received a \$250 college scholarship from the Farmington Jaycees, sponsor of the contest.

The first runner up received a \$50 savings bond, while the second runner up was awarded a \$25 savings bond.

All the awards were presented by Farmington Jaycees President, Niv Kennedy, and Ava Alter the second runner-up.

During the evening session (Continued on Page 11B)

Monument Committee Organizes

Robert L. Smith of the Veterans of Foreign Wars was named to head a citizens group to redesign and relocate the veterans' monument, currently located on the Masonic Temple property, at an organizational meeting Nov. 22.

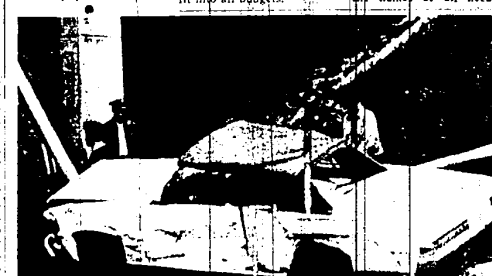
Other officers of the group are: Ralph Yoder, Farmington City Councilman, as vice president; Katherine Briggs, officer and active member of the Farmington Historical Society as secretary; Farmington Township Clerk Floyd A. Cairns, treasurer; and Harry Katchka, finance committee chairman.

The group hopes to move the monument to public property and to redesign the monument so that Farmington's war dead from World War II, the Korean Conflict and Vietnam can also be listed.

Membership of the committee is drawn from all segments of the community.

Residents are invited to submit designs for what they consider would be an appropriate memorial and future meetings will decide the ultimate location of the structure.

The next meeting of the group will be held early in January.



THIS CAR was declared a total wreck following the Nov. 23 Metroview, Farmington, was involved in an accident at Freedom Rd. and Farmington Rd. in the City of Farmington, escaped with cuts. The three passengers. The driver of the car, Richard G. Szabo, 19, also sustained cuts.

What's Inside

FARMINGTON	
Amusements	6-7B
A&P Food	7C
Business Directory	2D
Church Directory	8-9C
Editorial Page	8A
Food Fair News	10C
Home Improvements	4-5B
Kroger Food News	12D
Packers Food	35C
Sports Pages	2-3B
Want Ads	Sec. D
Women's News	Sec. C