

Farmington Has Big Hopes For Industrial Park

One must see to believe the transition taking place on what once was remote farm land where old Grand River and Halstead Rd. intersect in Farmington Township.

The day is fast approaching when at least 10,000 persons will be employed in the northwestern and southwestern quadrants of this corner which

within a radius of one mile offers transportation via I-96 and I-696, already completed, and the upcoming I-275.

There are few, if any, industrial sites in Michigan with comparable advantages, and investors have been quick to realize it.

Since ground breaking took place

in Farmington Freeway Industrial Park in October, 1966, 21 of the first 38 sites made available by the developers, the Thompson-Brown Co., have been purchased.

Just to the north, six of seven sites offered by Hubbard Associates in Halstead Industrial Park have moved equally quickly.

ADJACENT ARE the Independence Green multi-family residential development, and two new exclusive single-family subdivisions linking the area with the city of Farmington.

William W. Bowman, executive vice-president of Thompson-Brown, pointed out this week that 1967 saw 13 added manufacturing firms commit themselves to plant construction in the park, some already under way.

A heliport in the midst of the sector opened in mid-year, and Bowman said plans for an elaborate service center are well advanced, with first phases to be constructed in 1968. Included will be a major restaurant, banking institution and motel.

The total area includes approximately 700 acres on the two sides of Grand River and Halstead, all zoned industrial by Farmington Township in a deliberate and successful attempt to strengthen its tax base.

The roll call of manufacturers already installed in the area, or soon to arrive with construction crews, includes:

H.M.L. Industries, Jense, Inc.; Solit Industries, Multi-Elmac, Kebach Enterprises, Carter, McCormick & Peirce, M&H Tool Co., T.F.C. Specialty Building, Chorkey-Ellis.

Barget Mold and Die, Dow Furnace, Teletrans Corp., Consumers Power, Electromatic, Stanley Carter, Whitlock, Inc., H. M. White, Inc., Lorne Co., Control Power, Futurmill, Inc., Moore Industries, Automatic Valve.

Omni Spectra, Inc., Eaton, Yale & Towne, Gancia-Cote, Yale Die Sinking Co. and Boensch Co.

Farmington Office Has Biggest Year

The Farmington Office and Paper Supply Co., owned by Robert Chappa, has just completed its third full year in operation, and recent growth figures show a continuing increase in sales.

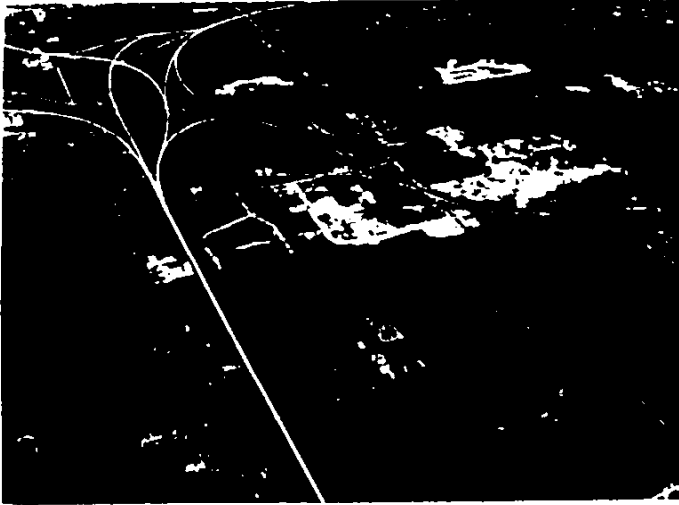
The December sales receipts showed a 40 per cent increase over December of 1966.

The firm plans to open a photo copy division in February to handle machines retailing from \$109 to \$1200.

Space in the store has been increased to 5000 square feet for display and 2,500 for the warehouse. Chappa describes the operation as a "complete business-man's department store."

Ford Promotion

John Pepper has been named manager of a new Film and Electronic Communications Department on Ford Motor Company's Public Relations Staff. The department combines radio and television news and feature activities, formerly headed by Pepper, with motion picture production and distribution.



BANANZA FOR FARMINGTON -- This aerial view shows the expressway access advantages of the \$100 million industrial park program under way in Farmington Township. From the left, I-96 is shown as it enters from the west, crossing 10 Mile Rd., old Grand River and the north-south Halstead Rd. in the center of the picture. I-696 breaks off from I-96 at the top of the photo to go its own route east. At the left, running north and south, is the path I-275 will follow upon completion, intersecting with both other freeways less than a mile from the industrial development area.



OUR SERVICE

- FULL LINE OF OFFICE SUPPLIES
- BUSINESS MACHINE SALES & SERVICE
- OFFICE FURNITURE & EQUIPMENT
- PHOTOCOPY EQUIPMENT & SUPPLIES
- ARTIST & DRAFTING SUPPLIES
- COMPLETE PRINTING SERVICE
- RUBBER STAMPS

FARMINGTON OFFICE & PAPER SUPPLY CO.

33419 GRAND RIVER AVENUE • PHONE 476-8111

