

Family Shoe SALE... Great New Styles for Spring

left to right:

GIRLS' SLIPON: continental style with moccasin vamped leather uppers. Cobble tan; 10-4... **4.97**

INFANTS' SHOE: white leather uppers, cushioned insoles, suede leather soles, 3-8... **4.97**

BOYS' SLIPON: black leather uppers with elastic goading. Non-marking soles, heels, 10-4... **3.97**

MEN'S WING TIP: styled with sweeping reverse storm welt, metalation toe. Grained leather uppers in black or brown, 7½-11, 12... **8.97**

MEN'S OXFORDS: with Sta-Brite leather uppers. PVC soles, heels. Black. Sizes 7½-11, 12... **7.97**

WOMEN'S TRAVELONS: glazed glove leather uppers, foam backed lining. Black, brown, navy, beige. Sizes 5 to 10... **6.97**

MISS 20 FASHION: two-strap with vinyl patent uppers. Black, white. In sizes 5 to 10... **6.97**

Sears Shoe Dept. (Not at Grosse Pointe)

Sears Fashion Edition of New Spring Bags

997

Ten marvelous shapes including envelopes, scalloped swaggers and east-west pouches in bone, navy, brown and black. All have convenient inside zip pockets and faille linings.

Sears Fashion Accessories (Not at Grosse Pointe)

20% off

Sears Featherlite Softside Luggage Gives More Room

Soft sides allow more packing room; heavy duty aluminum frames protect clothing.

FOR MEN

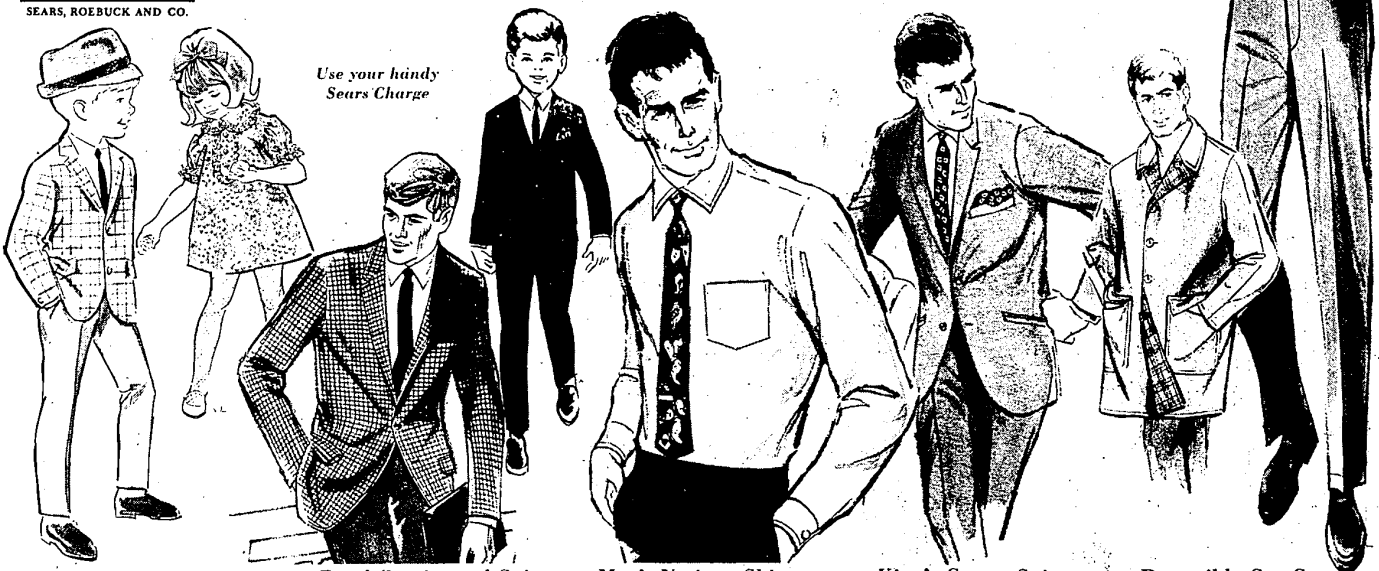
21.98 Two suiter	17.97
23.98 Three suiter	19.97
16.98 Companion case	13.97
15.98 Attache case	13.97
19.98 Jet bag	15.97
24.98 Garment bag	19.97

FOR WOMEN

14.98 Cosmetic case	11.97
15.98 21-inch weekend	12.97
19.98 24-inch pullman	15.97
22.98 27-inch pullman	18.97
14.98 Model's tote	11.97
25.98 Garment bag	21.97
8.98 Tote bag	7.97

Sears Luggage Dept.

Sears Spring Fashion SALE



Little Girls' Dress-ups

PERMA-PREST Easter frocks in a rainbow of colors, a showerful of styles. A line, skimmers, high waists. Tumble dry... never iron. Toddler's 1-3; juveniles 3-6x

Reg. 5.99
4.97

Boys' Continental Suit

Fully lined 2-button single breasted coat with shoulder lapels. Cuffless pants with side pockets. Bronze, blue, black, green plaids, 6-12.

11.99 10-14 suit: 2 pair of pants, vest and coat... **10.97**

Reg. 15.99
11.97

Men's No-iron Shirts

Long sleeved dress shirts are impeccably tailored in poly-ester and cotton with a PERMA-PREST finish that really works. Button down collar model in oxford weave; spread and snappals in smooth weave. Pewter, maize, blue and wide track stripes. 14½-17.

Reg. 5.99
4.97 each

3 for 14.50

Short sleeved models, reg. 4.99; 3.97 each up... **3 for 11.50**

King's Crown Suits

Our new spring collection features two and three button models for the man who is going in the right direction...! Fine Teton-wool-silk and Teton-wool-mohair blends in grey-black, green, blue or brown. Regular, shorts and long in the collection.

Reg. 89.50
\$70

Reversible Car Coat

Tan or blue reverses to beige and blue plaid. Sporty. Not collar. Polyester-cotton blend. Washable. Sizes 36 to 46.

Reg. 22.99
19.97

Little Boys' No-iron Suits

Fully lined patterned jacket mates with solid color pants. Tailored in PERMA-PREST Blue™ polyester and cotton blend. 3-6x. PERMA-PREST white dress-shirts. 3-6x; Reg. 2.19... **1.97**

Reg. 9.99
7.97

Coordinated 3-pc. Suit

Castal trio includes 3-button jacket, coordinating and contrasting pants. Medium blue or bronze. 11 to 20.

Reg. 26.99
21.97

Perma-Prest® Slacks

Oxford weave slacks in a new soil releasing fabric. Ivy or trim tapered styled in loden, green, tea gold, charcoal gray. Sizes 29-38.

Reg. 6.99
5.44

Girls' No-iron Dresses

Reg. 5.99
4.97

Freshly patterned collection in frills, ruffles, gentle trims, sunlit pates and fresh brights. All in a marvelous mini-care blend of polyester and cotton that never needs ironing when tumble dried. Sizes 7 to 14.

6.99—Pretty Plus sizes 8½ to 16½... **5.97**

Sears Girls' Wear (Not at Grosse Pointe)

Cling-alon® Proportioned Length Hose

Reg. 1.19
94¢

Ultra sheer 15-denier luscious made exclusively for Sears. Beige, sunset mist, mocha fashion shades. Stock up during this sale.

Our Sheerest

Cling-alon® dress hose, with reinforced heel, toe, bronze-gold, single, and charge.

1.95

Sears Hosiery Dept. (Not at Grosse Pointe)

Great New Figure Shapers

Reg. \$2
2 for 2.99

1.57 each

BRA of Dacron®/nylon/cotton has cups shaped with Wonder-Fit to fill out in-between cup sizes. 30-36A, 32-38B, C.

LONG LEG PANTY of nylon and spandex two-way stretch fabric. One size fits waists 22 to 30 inches.

Trained consultants will assist you in choosing the proper garment for your personal needs.

Sears Bra & Girdle Dept. (Not at Grosse Pointe)

Proportioned Lacy under Dressings

Reg. \$5 Slip
3.67

Antron® nylon tricot slip with frothy lace accents. White, black, beige. htee. 32-42 Short; 32-44 average, 38-44 tall. 86 sizes 46-50... **4.67**

Pettislip

Short, S-M; average, S-L. White, blue, black, beige.

Reg. \$3
2.27

BRIEFS in nylon tricot with lace trim. 4-7.

Reg. 1.59
1.27

Sears Lingerie Dept. (Not at Grosse Pointe)