

Now is the Time to . . . Plant a Full Grown Tree

Folz, I have specialized in Shade Trees and have supplied thousands for street plantings, industrial schools, churches and residential. I feel that the right selection of a shade tree is perhaps the most important decision that a home owner is faced with in landscape planning.

Why Wait for Shade?
COME IN AND PICK YOUR TREE NOW!

KWANAZA FLOWERING CHERRY from \$18.95

"diatus synonymus" BURNING BUSH large 10" dia. \$9.95

Here are some **QUESTIONS** You should be asking:
What space do I have? What about patio privacy? What is the ultimate height of the tree? What is the proper location for shade of home? Do storms affect limb damage? How about insects? When is best planting time? How fast will it grow?

CRIMSON KING Red Leaf MAPLE Large Varieties **FLOWERING CRAB**
\$26.99 & \$34.99 from \$16.95

Large Balled - Planted

"Tag 'em Now"
We will deliver at your convenience.

SYCAMORE GREEN ASH SWEDELLER RED MAPLE
CRIMSON KING SUGAR MAPLE WHITE BIRCH SUNBURST LOCUST OAK

FREE LANDSCAPE PLANS! EVERGREENS

A nice variety of evergreens in your landscape plan will add beauty and distinction to your home and surroundings. We feel that the quiet beauty of an evergreen garden is the ultimate choice of choice of varieties to select from. All of the trees and shrubs available for use in our neighborhood are here for your inspection. We have a wide choice of trees to suit your needs.

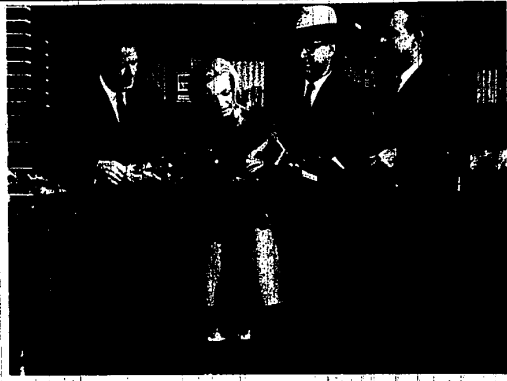
Special 4 ft. EVERGREENS \$19.95

ORTHO OFFER
Buy The New Ortho "WHIRLY BIRD" SPREADER for \$5.95 Regular Price

get your FIRST Box of 25 lbs. Covering 5,000 Sq. Ft.

ORTHO LAWN FOOD (22-4-4 Plus 2% Iron) Regular Price 4.95 at only \$1.50 (SAVE \$3.45)

Harold The
GA 1-2888
OPEN SUNDAYS



HI HO OPENING!—Detroit Bank & Trust chose a Western theme for the opening of its new banking center for its office at 11500 W. and Palmer Roads in suburban Westland. The office also is the westernmost office of the bank's three branches in the community. Miss Madita Makac, Miss Detroit Bank & Trust, used a western knife to cut a ribbon made up of larid roses and daisies to formally open the banking center. President C. Boyl Stockmayer (left), Manager Alton Moses (sporting the ten-gallon hat) and Mayor Thomas Brown of Westland held the roping while Miss Makar did the cutting.

Computer Steps Into Field Of Long Distance Moving

INDIANAPOLIS, Ind.—The moving industry's first computer-controlled van management system has been inaugurated.

Aero Mayflower Transit Company announced that instantaneous telecommunications now link the long-distance moving company's dispatching offices in Los Angeles, New York City and Indianapolis with a powerful IBM System/360 Model 40 computer which records, stores and feeds dispatching information required to coordinate the interstate movements of a fleet of 1,500 moving vans.

DISPATCHERS in the three cities use IBM visual terminal units to enter into the central computer complete shipping information for each long-distance move. These terminal units resemble small television sets with attached typewriter keyboards.

Data flows over 2,200 miles of leased communications lines between Indianapolis and Los Angeles, and 700 miles between Indianapolis and New York.

The instantaneous free-flow of dispatching information insures "the highest possible level of service" to the 125,000 American families the company moves each year.

Order information stored on magnetic disks by the computer includes shipper's name, order number, point of origin, destination city, size of shipment, estimated cost, loading date, delivery date, packing services to be provided and data required for billing purposes and for internal use.

Tips For Gardeners

Perennial galliardias are just as easy to grow as any annual. Drop the seeds in the soil in an area that has been spaded, then raked fine. They'll sprout in two to three weeks.

A real indoor-outdoor plant is the little-known *Exacum*. They may be grown in the garden to bloom in summer, or seeds may be planted outdoors in pots in late summer. The pots should be moved indoors before frost arrives. The dainty, sweetly scented, bright mauve flowers will appear all winter if pots are set in a sunny window.

Flowers Can Beautify Home And Garden

The uses of annual flowers to beautify your home and its surroundings are myriad. They may be grown in rows for cut flowers; used in ribbon plantings along paths or driveways or massed in beds or borders. And they often are used to "complete a picture," as accents among larger plants, such as evergreens or shrubs.

When used in the latter manner, best results come from limiting the planting to a single color or a single kind of annual, says the National Garden Bureau. The widely available petunia is a popular choice, it adds.

service to families-on-the-move.

MOVE ORDERS, routes, scheduling and operational information also are added to the computer's files. This data, stored on magnetic disks, is available for updating and to answer inquiries.

Dispatchers in all three dispatching offices can feed or draw information instantaneously. The company also has individual printers linked with the computer to type out orders and special instructions at the dispatcher stations in New York, Indianapolis and Los Angeles.

This contributes to an unprecedented degree of management control of all operations, the company reports, and it represents a giant stride toward the goal of every carrier in the long-distance moving industry of providing on-time

Wreath Lamps In Flowers For Centerpiece

For an attractive dining table centerpiece, the Society of American Florists suggests wreathing hurricane lamps with all manner of small flowers.

Neighborhood florist shops have a plentiful supply of freshly cut flowers for such indoor table settings. Later, when the weather becomes warm and settled, the hurricane lamps may be ringed with cut geraniums for a dining table outdoors on the patio.

Daisies, tiny roses, pompons and baby's breath are among the flowers suitable for wreathing hurricane lamps used indoors.

If your lamps do not have bases deep enough to hold water, or a commercial foam flower holder, place the lamps in a deep saucer, a dessert dish or even a soup plate. By thickly arranging the flowers, neither the container nor the foam flower holder will show, the Society points out.

Here's A Gift For Mom: A Real Laundry Room

For a change-of-pace gift, Dad might consider giving Mom something she's always wanted but hesitated to request.

Like a real, honest-to-gosh laundry room: Something more than just a set of clotheslines hung across the basement.

She's not likely to complain about a laundry place for doing the family washing, but it can't be very pleasant. Dad can give her a year-after-year lift by ordering installation of a modern laundry room or doing the job himself—for a birthday anniversary.

Dad's best friend for a project of this kind is his lumber

and building materials dealer, who is equipped to give advice on materials and construction. He can recommend a good contractor, too.

Dad can keep costs down and appearance attractive by sticking to factory-finished hardboard paneling for the improvements. The most extensive line is made by Masonite Corporation. Plyote panels include 15 decorator panels plus Living Wall and a variety of Peg-Board panels.

Known for their stability, durability and fine appearance, these woodgrained and textured panels go up quickly when applied with a cartridge-type adhesive, a real time-saver. Mom will appreciate such a gift no end; also, Dad and other members of the family will benefit from the improvement.

Candytuft Are Best Flowers For Cutting

One of the best flowers for cutting is candytuft. Light soil, full sun and cool weather are its requirements. This seed should be sown in the garden as soon as weather permits.

Within two weeks the seedlings will appear and may be thinned to allow four inches between plants. Before you cut it, there'll be blooms for cutting. Successive sowings, three weeks apart, will insure these pleasant flowers for a longer season.

JOY LUMBER COMPANY
15505 Beech Daly Road, KE 7-4480

STORE HOURS
Weekdays — 7:30 a.m. to 5:00 p.m.
Saturday — 7:30 a.m. to 4:30 p.m.

FIR PLYWOOD GOOD 1-SIDE CUTTINGS

1/4" x 18" x 120" — 98c	1" x 12" x 42" — 95
3/4" x 18" x 96" — 2.95	1" x 12" x 108" — 1.95
3/4" x 23" x 96" — 3.45	

Formica Sink Cutouts 35¢ AND UP

PLASTIC BOTTLE GLASS

2' x 6' \$4.20 SHEET

WHITE PINE FURRING

1 x 2 2" Lin. Ft. 1 x 3 3" Lin. Ft.

Put "Early American" back into its rightful place in your home . . . now!

SALE

3 TRUCKLOADS JUST ARRIVED!

17 and 76 MILK CANS

That's right . . . over 1700 old, fine quality milk cans

Hundreds of uses...

- Mail Box Base
- Umbrella Stand
- Charcoal Container
- Waste Baskets
- Magazine Racks
- Iced Drink Disp.
- Bar Seats
- Hitching Post
- Wood Holders
- Patio Tables.

WHILE THEY LAST!
10-GAL. SIZE \$6.88 NOW ONLY

USED RAILROAD TIES \$3.49 from 2¢ on.

NEW ALL-PURPOSE ELECTRA SPRAY GUN

- Adjusts — Fine, medium, coarse for every sprayable liquid.
- Lifetime service warranty.
- Professional results: furniture, stutters, cabinets, etc.
- Refatigating, waxing, insecticides, moth proofing, etc.

Reg. 12.95 Special \$8.44

SECURITY MICHIGAN CHARGE BANKARD

Old Fashioned Wooden NAIL KEGS

USE THEM LIKE THE MILK CANS! — All Sizes of WOODEN BARRELS

AMERICAN Hardware & Supply Co.
31245 EIGHT MILE ROAD at MERRIMAN
Ph. 476-6240 • 537-2645 • FREE PARKING

Kay & Kay Tile & WOOD PANELING

LIGHT COLORS VINYL ASBESTOS TILE \$4.99

AN ADDITIONAL 5% OFF ON ALL SALES — ITEMS WITH THIS Ad Cash Sales ONLY

SPECIAL SPECIALTY Painted COGNET PANELING \$2.99

CEILING TILE \$3.80 (A BOX 1st Quality)

BEAUTIFULLY FINISHED PANELING

COGNET 4x7	3.40
SPICE 4x7	3.40
MANANA 4x7	3.40
HARVEST PEAN 4x7	4.99
RIVIERA TEAK 4x7	4.40
WHITE BIRCH 4x7	4.40
MORONA WALNUT 4x7	4.99
BANANA 4x8	3.99
COGNET 4x8	3.99
CASTLE WALNUT 4x8	4.99

15125 TELEGRAPH W. 7 MILE RD. Just S. of 8 Mile Rd. 12 54833 OPEN SUN 11-4

20018 W. 7 MILE RD. S. of W. of Springgreen 12 54833 CLOSED SUN.