

Lawn Mowing Season Stresses Need For Safe Handling

The robin that tweets in the Spring, tra-la, is the first har-binger of that sweet season; the second is the little green chick that peeks out of the ground; the third is your languid Spring fever mood.

But what really heralds the season is the collective whir of lawn mowers being revved up all over the land. And with 25 million people starting up their power mowers, it's a pervasive sound indeed.

Unfortunately this is the time when many people suffer from their lack of knowing how to use a power lawn mower safely. In their enthusiasm not to let the grass grow under their feet, many individuals merely mow away without first stopping to assure themselves of an accident-free situation.

MANY OF THE SAFETY rules seem self-evident, but the statistics on injuries show that for many people, carelessness is their unfortunate mode of operation. The Outdoor Power Equipment Institute recommends a three-stage safety system to help homeowners protect themselves from mowing accidents. Preparation for and procedure during mowing are all part of the safety picture.

A machine is only as safe as its operator—so each person who operates a lawn mower should know the rules of the game before he plays "gardener". The first-thing's-first rule is having a running familiarity with your machine. This means a scrupulous reading of the instruction manual and operating the controls in a "dry run."

Before the mower is started, fill the gas tank and use an approved safety container. Never add fuel to a running or hot engine because you may get all "fired" up if you do.

NEXT, CLEAR the working area of children and pets. It's better to be the "bad guy" for a little while when you show the young'uns away, than to risk hurting them with flying debris. Inspect the grass thoroughly and pick up the sticks and stones that will hurt bones if hurled by the mower's blades.

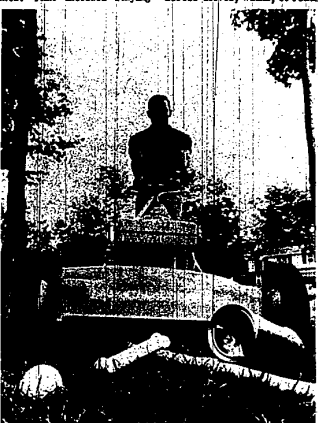
While you are mowing, remember to keep your feet clear of the mower's blades at all times. That includes staying away from the side of the mower where the blade tosses out clippings and debris through the discharge chute.

Push, never pull the mower toward you—or you could pull it over your feet! Stop the engine before pushing your mower across drives, walks, or roads.

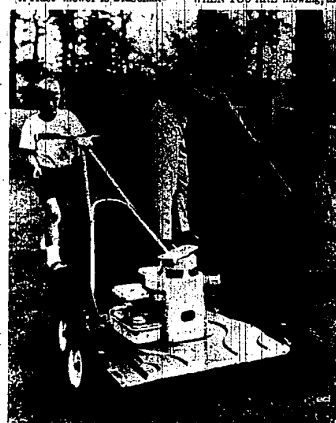
Even if you'll only be gone a minute, always stop the engine when you leave the mower. Though it seems a little tedious, you'd be surprised at how many people tempt fate by trying to mow the mower while it's still going full blast.

A rider-mower is a fascinating thing for children but it should never be driven as a vehicle by them, nor should you ever be talked into giving them a ride. Grow-up neighbors ought not to operate it either—until they have had the proper instruction.

WHEN YOU ARE mowing, the



HERE COME flying missiles. When the mowing blade, which whirls 2500 times a minute, comes in contact with foreign objects like toys, cans or rocks — watch out!



DAD'S TOOL, not Junior's toy! Children and power mowers don't mix.

Outdoor Power Equipment Institute suggests that you follow these fashion hints for safe riding apparel. Avoid loose fitting clothes that stand a chance of being caught in the machine's moving parts; and wear hard toe or safety shoes to protect your feet from the mower's blades. Never mow barefoot, or with open sandals.

When you have finished mowing your lawn, be sure to disconnect the wire from the spark plug—eliminating any possibility of accidentally starting the mower while you work on it. If you keep your mower well maintained, you'll have years of service from it.

Those in the market for a new power mower should look for the triangular seal which indicates that the manufacturer has met with a rigid industry safety standards published by the American Standards Association. This triangle of safety is the first step toward assurance of fine equipment.

Peonies Create Visual Magic

When you see peonies in bloom, you'll know that summer is just around the corner!

Peonies, with their massive blooms and lavish colors, will help you to create visual magic in your home or apartment.

For floral arrangements in any room, use a dozen peonies, all of the same color, with their blooms contrasting with their glossy foliage. Or combine peonies with other flowers and foliage—such as pink and red peonies contrasted with blue delphiniums and green bells of Ireland—for dramatic arrangements.

In arranging peonies, carefully remove all of the foliage below the waterline. This will prevent bacteria growth and permit the blooms to receive adequate moisture.

By using one peony stalk and separating the bloom from the foliage, you can make a little arrangement of peony foliage in a small shallow flat bowl, highlighting it with the peony bloom.

This can be placed on a low coffee table, for instance, with the larger peony arrangement providing major accent on a chest or buffet.

MARBLE 50# BAG **\$1.59**

LIMESTONE In Your **PEAT**
60¢ BUSHEL Contain **35¢ BUSHEL**

CALL KE 1-1733
FOR YARD & DELIVERY PRICE

WEEK DAYS AND SAT. 8 AM TO 9 PM
SUNDAY AND HOLIDAYS 9 AM TO 6 PM

BUSHEL STOP
BY THE BUSHEL OR YARD
2780 W. 7 MILE RD.

ONE OF MICHIGAN'S OLDEST AND MOST REPUTABLE BUILDERS

Presents... **AN ALL NEW MODEL DISPLAY**

- GARAGES • PORCHES • PORCH ENCLOSURES
- ROOM ADDITIONS • CONCRETE WORK
- GARAGE DOORS—ENLARGEMENT
- BUILDING VIOLATION CORRECTIONS

• Custom construction... production prices

• 100% guarantee on materials and workmanship

• High customer recommendation

• Free estimates

• No money down

• Notarized release of lien

KENWOOD
3-7070

GRISSOM GARAGE BUILDERS
25111 W. 7 Mile... 1 Block West of Grand River

Insulating Glass Best For Wide View Windows

Insulating glass, which was once a custom feature, is now obtainable in all styles and sizes of stock wood windows. For homeowners this means: That wide-view windows can be practical as well as pretty.

That every room in the house can be weather-tight.

That heat loss and fuel bills can be cut substantially.

That the bother of hanging storm windows can be eliminated.

When insulating glass was available in only a limited number of window styles, homeowners who used wide-view units such as picture windows, bows and bays or sliding glass doors, had to depend on cumbersome storm sash to protect against heat loss in winter. In summer they often overworked their cooling systems to compensate for heat gain through large glass areas.

TODAY, INSULATING glass can be had in all sizes and styles of stock ponderosa pine window units, including double-hung, casements, awnings, sliders, and the popular wide-visibility windows and doors. They are readily available at local lumber dealers.

Insulating glass, also called double-glazing, is actually two pieces of glass sealed at the edges to form a cushion of "dead" air space between. Combined with the natural insulation of wood sash and factory-applied weatherstripping, insulating glass is considered the most effective deterrent to expensive and uncomfortable heat loss.

Floors Make A Room

According to The Better Floors Council, floors can make or break a room. So if you are installing vinyl asbestos tile, select colors and designs that blend with several types of furnishings and decor because this tile will last around 20 years.

FAMILY ROOMS ADDITIONS from **\$1,585** only \$7.50 per week

PORCHES

INCLUDES ELECTRICAL, HEATING, PANELING, PLASTERING, PLANS, PERMITS, COMPLETE JOB

ZA-LO Bldg. Co. 27420 Joy Rd. 24 hour service
GA 5-2333 KE 8-1122

IT ALSO GUARDS against condensation — moisture which forms when warm air strikes cold window pane or cold metal sash—and eliminates the need for storm sash except in extremely cold climates.

The value of weatherstripped wood windows with insulating glass is attested to by electric utility companies which recommend their use in electrically-heated homes where full thermal insulation is a construction requirement.

Generally, wood windows with insulating glass cost only about 15 per cent more than single-pane windows with separate storm sash.

QUALITY MATERIALS at REDFORD'S MONEY SAVING PRICES

BRAND NAMES YOU CAN TRUST SATISFACTION GUARANTEED EXPERIENCED SALESPERSONS KNOWLEDGEABLE - HELPFUL

Do-it-yourself! BUT LET US HELP

ROOFING

6 New Popular Pastel Colors — Also Plain White, Black, Green

- DURABLE
- ASPHALT COATED
- EASY TO INSTALL
- OVER OLD ROOF

OUR ROOFING IS GUARANTEED 15 YRS.

749 sq. Squares

3 Bundles Per Square

SEALON SHINGLES Only \$4.50 sq. Self Sealing

225 lbs. per sq.

NEED A GARAGE? SEE REDFORD FIRST

OVER 30 STYLES AND SIZES TO CHOOSE FROM

FOR 14 x 20 LOW AS **\$299³⁷** For Materials Only

Overhead Door 16x7 - Installed \$134.75 Steel Ser. Door \$27.50

- All Fir Framing Lumber
- 2x6's, Shingles
- 1x6 "D" Fir Siding
- 2 Windows Included
- All W.P. Trim
- 1x6 Roof Sheathing
- Nails

WEATHER-ALL GARAGE

FREE ESTIMATE

BIG GARAGE \$880

INCLUDES CEILING AND LIGHTS

NO MONEY DOWN • BUDGET CONTROL PLAN EXTENSIVE PAYMENT PLAN UP TO 20 YEARS TO PAY

NO PAYMENTS UP TO 4 MONTHS

WEATHER-ALL GARAGE

19475 ANTAGO

Hollyhocks Add Height In Gardens

One of the best tall plants that can be grown inexpensively from seeds is the hollyhock, says the American Seed Trade Association.

In the past, hollyhocks had to be planned for a year in advance since they are biennials and bloom the year after seeds are sown. Now plant breeders have bred varieties that will produce blooming plants the same season, if seeds are sown early enough.

To secure these, make certain you buy seeds of "annual" hollyhocks. These may be sold simply under that designation, or under a varietal name like Madcap. Look for the words "annual" or "blooms the first year" in the description in your seed catalog or on the seed packet.

THERE ARE OTHER annuals that can be used to add height in appropriate places. Ornamental sunflowers, cosmos and zinnias (Inca's Flower) all qualify. Each presents a different type of foliage and flower. Ornamental sunflowers should not be confused with those grown as field crops. The ornamental type is tower growing (4 to 6 feet high) and the flowers are smaller. Depending on the variety selected, they may be colored red, crimson, chestnut as well as yellow.

The foliage of tall-growing cosmos, like the Sensation strain, is feathery; flower colors are dusty in white, pink and rose. Thus, despite the 4 to 6 foot height of the plants, their effect is light and airy.

CONSTRUCTION

White Woods Kiln Dried	2x4's	6 Ft. .53	16 Ft. 1.62
		7 Ft. .67	18 Ft. 1.86
		8 Ft. .76	20 Ft. 2.07
		10 Ft. 1.01	22 Ft. 2.55
		12 Ft. 1.22	24 Ft. 2.78
		14 Ft. 1.42	
	2x6's	6 Ft. .84	16 Ft. 2.59
		8 Ft. 1.14	18 Ft. 2.92
		10 Ft. 1.42	20 Ft. 3.24
		12 Ft. 1.70	22 Ft. 3.95
		14 Ft. 2.06	24 Ft. 4.32
	2x8's	6 Ft. 1.25	16 Ft. 3.41
		8 Ft. 1.60	18 Ft. 3.84
		10 Ft. 2.00	20 Ft. 5.28
		12 Ft. 2.56	24 Ft. 5.76
		14 Ft. 2.99	

ALUMINUM SIDING

GIVES YOU YEARS OF EASY LIVING

- Less backer
- No rust
- No chip or peel
- 30-year written warranty

\$239⁵⁰ Sq.

- Will not warp, crack or peel
- With backer
- 30-year written warranty

\$279⁵⁰ Sq.

Quality Prices Available

INVENTORY SALE! MICHIGAN'S LARGEST TILE CHAIN!

PRICES SLASHED!

BUY NOW & SAVE!

OZITE 12" x 12" CARPET TILES **59¢** LARGEST IN STOCK SELECTION!

KENTILE or **Armstrong** VINYL ASBESTOS offered at low price **\$6.29** 80 pcs. 45 sq. ft.

NATIONAL BRANDS!

CERAMIC WALL TILE 6¢ each

PLASTIC WALL TILE 7¢ each

MOSAIC TILE 39¢

DISCOUNT PRICES!

FORMICA LAMINATED PLASTIC 44¢

CERAMIC BATHROOM FIXTURES Complete line

LIFETIME GUARANTEE VINYL TILE 13¢

Tile Town OPEN 9-9

28551 DEQUINDRE Across From 1777 DIX HIGHWAY
1/2 Blk. South of 12 Rd. Rd. Universal City 1/2 Blk. E. of Southfield, Lincoln Park
Open Sun. 11 to 4

2200 N. TELEGRAPH 21011 GRATIOT
1/2 Blk. S. of Ford Road Open Sun. 11 to 4 1/2 Blk. N. of B Mile Rd.

28885 PLYMOUTH ROAD
1 Blk. E. of Middlebelt

FREE ESTIMATES
E-Z CREDIT
BANK RATES

PRE-HUNG PERMA-WHITE Colonial Cross-Block Aluminum Combination Door

All Hardware Included Easy to Install No special tools needed

2x6-8 3-0x-8 **37⁹⁵**

PARTICLE BOARD A-1 First Quality USE AS UNDERLAYMENT EASY TO CUT OR NAIL

ALL 4 x 8	1-25	25-Over
1/4"	2.39	
3/8"	2.85	3.29
1/2"	4.15	3.99
3/4"	5.55	5.39

REDFORD Cashway LUMBER CO.

OPEN MON. - SAT. 8-5:30 p.m.; CLOSED SUN.

ADD QUIET!

When you add a room Put in a ceiling of **Armstrong CUSHIONTON®**

WE CARRY A COMPLETE SELECTION OF **Armstrong**

CEILING TILE
FLOOR TILE
AT REDFORD'S EVERYDAY LOW PRICES

BOSTON ROCKER Finished in Black and Gold **\$25.88**

BLOND IT Wood Finish One Application Easy to Apply 12 Colors 1/2 Pint, 1 Pt., Qts. From 85¢

Student Knotty Pine **DESK & CHAIR** 34" Wide - 29" High Ready to Finish Both for **\$21.59**