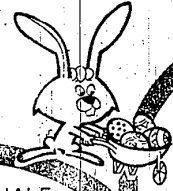




FOR YOUR *Easter Feast!*

LOW PRICES PLUS TOP VALUE STAMPS...WHY SETTLE FOR LESS?



FULL SHANK HALF

Smoked Hams

49[¢] WHOLE OR BUTT PORTION 55[¢] LB.

Whole Fresh Fryers

29[¢] LB.

U.S. CHOICE TENDERAY
4TH & 5TH RIBS

Rib Roast

89[¢] LB.

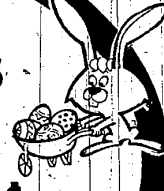
HYGRADE'S

West Virginia Hams

79[¢] WHOLE OR HALF LB.

Semi-Boneless Hams

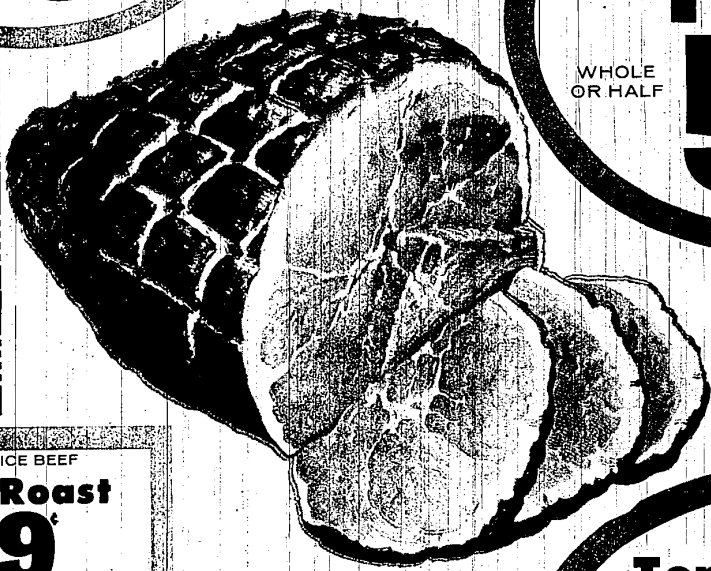
57[¢] WHOLE OR HALF LB.



100 TOP VALUE STAMPS
WITH THIS COUPON ON ANY TURKEY
Valid Thru Sat., Apr. 13, 1968 At Kroger Det. & East, Mich.

100 TOP VALUE STAMPS
WITH THIS COUPON ON ANY 10 POUND CANNED HAM
Valid Thru Sat., Apr. 13, 1968 At Kroger Det. & East, Mich.

50 TOP VALUE STAMPS
WITH THIS COUPON ON 2-PKGS CUT-UP FRYERS 2-PKGS FRYER PARTS OR 2-ROASTING CHICKENS
Valid Thru Sat., Apr. 13, 1968 At Kroger Det. & East, Mich.



GLAZES FOR BAKED HAM
Another all-time FAVORITE RECIPE from Good Housekeeping

HONEY-ORANGE: Mix 1/2 cup honey or corn syrup with 1 cup brown sugar and 1/2 cup orange juice.

APRICOT-PINEAPPLE: Combine 1 cup brown sugar, 1/2 cup canned whole fruit apricot nectar, 1/2 cup pineapple juice. Cook until thickened.

FOR OTHER RECIPES SEE GOOD HOUSEKEEPING ON SALE AT KROGER.

U.S. CHOICE BEEF

Chuck Roast

59[¢] BLADE CENTER CUT LB.

U.S. CHOICE TENDERAY BEEF

Boneless Roast

79[¢] BONELESS CHUCK ROAST LB. | **89[¢]** BOSTON ROLLED ROAST LB.

KWICK KRISP

Sliced Bacon

2 LB PKG 139[¢]

- GORDON'S Fresh Kielbasa..... **79[¢]** LB.
- GORDON'S ROLL Pork Sausage..... **79[¢]** 2 LB ROLL
- GLENDALE JUMBO Polish Sausage..... **59[¢]** LB.
- 10 TO 14-LB HEN Honey Suckle Turkeys... **49[¢]** LB.
- FRESH PICNIC STYLE Pork Roast..... **39[¢]** LB.

Norbest Tender-Timed Turkeys

THE TURKEY WITH THE BUILT-IN THERMOMETER

39[¢]

10 TO 14-LB SIZE

Norbest "tells you when it's done!"



LEAN RIB

Center Cut Pork Chops

79[¢] LB. | **89[¢]** Loin Chops LB.

- YOUNG TENDER Leg O' Lamb **89[¢]** LB.
- SHOULDER CUT Lamb Roast **79[¢]** LB.
- HOWARD JOHNSON FROZEN CHICKEN OR SHRIMP CROQUETTES..... **69[¢]** 12-OZ. WT PKG
- BRER RABBIT Gold Molasses..... **32[¢]** 12-OZ. WT BTL
- CHICKEN, RICE OR SPANISH Rice A Roni..... **33[¢]** 8-OZ. WT PKG
- FANCY WHITE Empress Tuna..... **31[¢]** 3 -2-OZ. WT CANS
- BUTTERMILK Puffin Biscuits..... **29[¢]** 3 -8-OZ. WT PKGS
- LACHOY BEEF Chop Suey..... **53[¢]** 1-LB. CAN.

- WHOLE OR HALF OLD FASHIONED Boneless Hams **89[¢]** LB.
- COUNTRY CLUB Canned Ham 10-Lb Can **749[¢]**
- KRUN-CHEE TASTY Potato Chips..... **39[¢]** 3 5/8 PKGS
- DELICIOUS FROZEN Sara Lee Pecan Coffee Cake **79[¢]** 13-OZ. WT PKG



NEW! SUPER

Stripe Toothpaste

6 1/2-OZ. WT TUBE **73[¢]**