

# Save on Your Fencing Needs



## Heart-of-the-West Redwood

WEATHER-ENDURING, BEAUTIFUL, BASKETWEAVE FENCE

Turns your yard into an airy, private outdoor family room. Acrylic stained, decay-resistant redwood. Posts are solid hardwood; boards are knot-free.

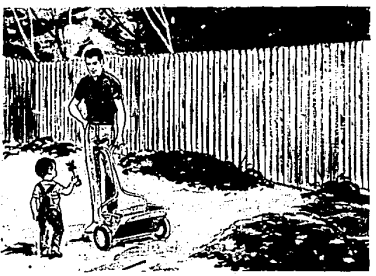
Regular 13.95

**1188**

8' wide x 4' high section

8'x5' high section, Reg. 15.95 ... 13.88  
 8'x6' high section, Reg. 16.95 ... 14.88  
 4'x4'x7' high post ... 2.79  
 4'x4'x8' high post ... 3.29

4'x4'x9' high post ... 3.79  
 3 1/2' wide x 48" high gate ... 22.95  
 10' wide x 48" high gate ... 59.95



## White Cedar Stockade

GOTHIC POINT FENCING FOR BACKYARD PRIVACY

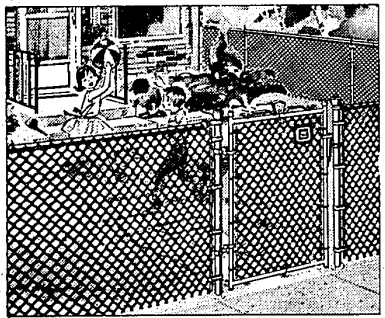
Sears finest stockade fence. Each piece is machine peeled. Surface is smooth and splinter free. Hand assembled. Huskier rectangular back rails.

6'10" x 47" high

**1599**

6'10" x 59" high section ... 17.99  
 6'10" x 71" high section ... 18.99  
 4 1/2' x 7' high post ... 2.29  
 4 1/2' x 8' high post ... 2.89

4 1/2' x 9' high post ... 3.19  
 3 1/2' x 41" high gate ... 16.99  
 10' x 41" high gate ... 37.99



## 48" Chain Link Fencing

SEARS CHIEFTAIN \*... FREE ESTIMATES AVAILABLE

For privacy and protection, have Sears install chain link fencing around your property. 11 gauge regular fabric at an economical price.

**74¢ PER LINEAL FOOT**

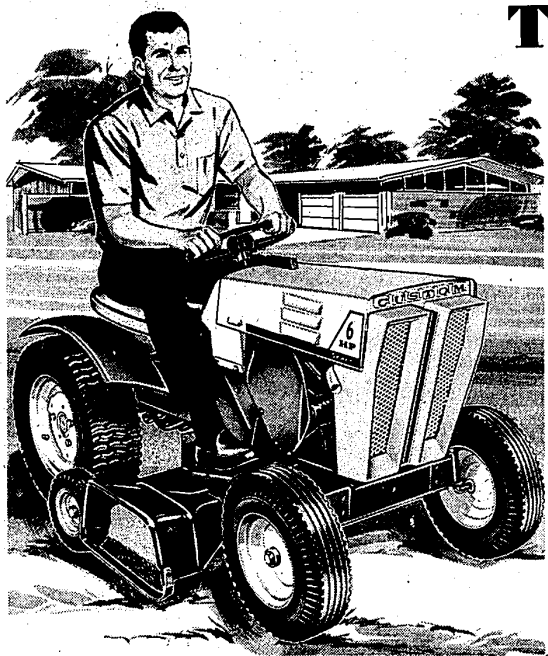
Material Only

48" End Post ... \$5  
 48" Corner Post ... \$7  
 3'x48" Gate ... 9.95  
 10'x48" Gate ... 24.95

Phone Sears for Installed Price Estimate  
Sears Fencing Dept. (at all 10 stores)

Sale Ends Saturday

# Save 50%... Powerful 6-H.P. Custom Tractor



Regular 449.95

**\$399**

Tractor Only

NO MONEY DOWN on Sears Easy Payment Plan

- Full size, all purpose lawn and garden tractor
- Four forward speeds and reverse
- Extra-deep contour seat for extra safety

This compact powerhouse on wheels does man-sized jobs all year 'round. Has auto-type stick shift and steering... fingertip controls... combination clutch-brake pedal with parking lock. Recoil start model with key-lock switch.

Electric Start Model, Reg. 549.95 ..... \$499

36-in. Mower Unit for Tractor ..... 99.99

## SEARS HAS A COMPLETE LINE OF FRONT AND REAR MOUNT TRACTOR ATTACHMENTS



<b>36" Heavy Duty Lawn Roller</b> For Only <b>49<sup>99</sup></b>	<b>36" Spreader and Seeder</b> For Only <b>45<sup>95</sup></b>	<b>Heavy Duty Cultivator</b> For Only <b>44<sup>95</sup></b>	<b>8-in. Plow Attachment</b> For Only <b>49<sup>95</sup></b>	<b>34-in. Wide Drag Harrow</b> For Only <b>39<sup>95</sup></b>
--	---	---	---	---

Smooth out frost heaves and other bumps in lawn. 18" diameter cylinder. Steel.

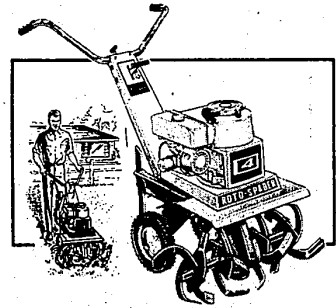
Hopper holds two 50-lb. bags of chemical fertilizers. Swirl agitators maintain even flow.

Four 6-in. sweeps. Handles rows 20 to 30-inches wide. Straddle type.

Cuts furrow up to 6-in. deep. Use on all tractors except Hydro-Trac.

Breaks clods, pulverizes, levels dirt. Breaks up crust, makes fine seed bed.

Pay NO MONEY DOWN on Sears Easy Payment Plan or CHARGE IT.



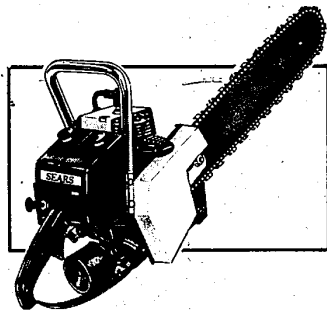
## Sears Rugged, New 4-H.P. Deluxe Roto Spader

This versatile spader is ideal for preparing seed beds, mulching fertilizer and peat moss, tilling and cultivating. Tines adjust from 26 to 24 or 13-inch swath. Center control panel.

Reg. 154.95

**134<sup>95</sup>**

6-H.P. Roto Spader, Reg. 189.95 ... 169.99



## Sears Lightweight Chain Saw with 17-inch Bar

Direct drive saw cuts firewood and logs in just seconds, operates in all normal cutting positions. Excellent utility saw for general purpose cutting. Magnesium frame and tank are lightweight, yet give saw extra strength.

Reg. 129.95

**99<sup>99</sup>**

Open Monday, Thursday, Friday, Saturday 9 to 9, Tuesday, Wednesday 9 to 5:30



- Grand River at Oakman, WE 3-3800
- Lincoln Park, Southfield at Dix, DU 3-7000
- Pontiac, 154 N. Saginaw, FE 5-4171
- Gratiot at Van Dyke, WA 5-0100
- Livonia Mall, 7 Mile at Middlebelt, 476-6000
- Wyandotte, Biddle-Maple, AV 4-9000
- Woodward, Highland Pk., TO 8-1300
- Macomb Mall, Gratiot at 1 1/2 Mile Rd., 293-8000
- Grosse Pte., 7 Mile-Mack, TU 4-6000
- Oakland Mall, 14 Mile Rd. at John R. 565-1000