

**J. KAUFMANN CO.**  
Webster 3-4535  
ARCH SUPPORTS  
8919 Fenkell

- ORTHOPEDIC and SURGICAL APPLIANCES
- SURGICAL BELTS
- ELASTIC STOCKINGS
- TRUSSES
- BRACES — All Types
- ABDOMINAL SUPPORTS

### Canary Grass Seed Can Be Sown In November.

To merely scatter Reed Canary grass seed over a plot of ground is a waste of seed and labor, especially if the ground is covered with sedge and cattails, believes Carter Harrison, of the Michigan State College farm crops department. Dormant seedlings may be made in early November.

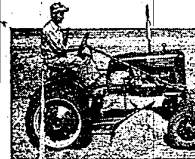
Only a small amount of seed will grow if the area is lightly worked with a fork or other farm tool, such as a drag. By plowing during the dry part of summer and working the sedge to destroy competing vegetation your grass will have a better chance, he says.

Fertilizer should also be added if you expect to establish a productive pasture on land which is otherwise of little value, the farm crops specialist maintains. Most muskshales alkaline or nearly so in Michigan, therefore no lime is needed.

Seedlings made around August 15 generally work out best in Michigan because late fall and early spring weather is usually wet and a difficult time to fit and seed. If the seedling cannot be made in the middle of August, wait until early November and make a dormant seedling.

Symptoms of Distress Arising from **STOMACH ULCERS DUE TO EXCESS ACID** **QUICK RELIEF OR NO COST** **Ask About 15-Day Trial Offer!**

Over four million bottles of the WILSON-FARMALL have been sold for relief of symptoms of distress arising from stomach and duodenal ulcers due to excess acid. Pepsin, Sour or Upright Stomach, Gas, Heartburn, Sleeplessness, due to Excess Acid. Ask for "WILLIAM'S" Rubbing Ointment—free at MAXWELL J. SMITH, Inc.



As about this handy leveling and grading blade. It's just what you need to make leveling and grading jobs easier, faster.

**EVERETT IMPLEMENT CO.**  
YOUR INTERNATIONAL HARVESTER DEALER

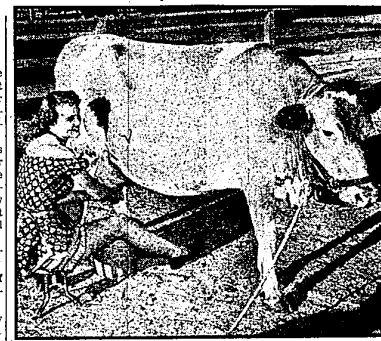
3120 Grand River at Orchard Lake Road Phone 1515

### Give Tips For Soft Corn Use

High moisture content in some of Michigan's corn crop means that soft corn will be needed for handling and storage, says Michigan State College farm crops specialist Leyton Nelson.

The farm crops department has compiled a list of suggestions for soft corn. Many may already be known to corn growers, but the agricultural workers believe a review is timely prior to the estimated soft corn crop this year. Their general recommendations are as follows:

1. Ensiling both fodder and shelled corn.
2. Sorting and early feeding of soft corn to hogs and other live stock.
3. Delayed harvesting to allow maximum field drying.
4. Clean husking to eliminate trash that reduces crib ventilation.
5. Use of screens on the elevator to remove shelled corn and trash.
6. Good distribution in the crib to avoid pockets of shelled corn and debris where spoilage is most likely to start.
7. Storage of corn in narrow cribs to help natural ventilation.
8. Use of adequate ventilators in cribs.
9. Storing of corn in the field in small shocks.
10. Sorting out most immature ears from corn which is to be cribbed. The immature corn should be used before spring.
11. "Hogging-off" or allowing cattle and hogs to harvest corn.



**HER UDDER TALENT**—They laughed when Glenda Rowland, named a Fair Maid for the Arizona State Fair in Phoenix, sat down to play milkmaid for an enterprising photographer. But the jeers turned to cheers when Glenda proved that besides being easy on the eyes, she's a darn good milker.

### Need Crib Change To Keep Soft Corn

Storing soft corn requires care, say Michigan State College agricultural engineers, though some of the methods are simple and may involve very little in the way of new apparatus or construction.

R. L. Maddox, MSC agricultural engineer, points out that cribs wider than four feet are unsuitable for soft corn storage. If a wider crib is used, some type of ventilation is necessary. If forced air is used, high, shallow cribs are preferable to wide, narrow cribs.

Spoilage will be cut down if an obstruction is placed in the crib to provide channels for the increased movement of air under wind pressure. The "A" frame ventilator admits air to the center of the crib and should be high and wide enough to reduce the air travel distance through the corn to four feet or less at any location in the cribs.

Natural air movement can be increased by building a double wall partition lengthwise through the center of the crib, Maddox says. The space between the double wall should not be less than twelve inches and the divided cribs should be four or less feet in width.

Partitions may be placed crosswise in wide cribs to reduce the distance of air travel to four feet or less. These walls are usually four inches wide.

Maddox points out that posts, rails, or plank bracing placed in a slanting position with one end on the floor and the other against the wall will allow air channels to open

### Acid Poisoning May Affect Cows

If any of your cattle begin to stagger as if drunk, they may have been poisoned by prussic acid. Michigan State College extension veterinarians say it pays stockmen to keep a sharp lookout for signs of prussic acid poisoning.

The acid, which contains cyanide, is often present in plants damaged by wilt, bruising or frost. Second growth of grass, following the first frost, usually contains the poison. If in doubt about the pasture, the veterinarians suggest you remove all stock from it. Then place a few less valuable animals on the pasture to see if it contains the acid before releasing all stock to graze.

Here's one way the sheep breeder can take out some insurance on the next lamb crop — use a check-ram just in case your number one ram should turn out to be a non-breeder. Michigan State College animal husbandry specialists recommend putting in the check ram after the main ram has been with the flock for five or six weeks.

Absenteeism among British miners in 1949 amounted to 12 per cent of all working time, nearly double the rate under private enterprise.

County agricultural agents have information on soft corn. Their advice can be sought to answer questions of mechanical drying, crib alteration for better ventilation, and feeding of soft corn.

### Farm Slaughtering Needs Cold Weather

You can start your farm slaughtering almost anytime now, according to L. J. Bratler, Michigan State College animal husbandry specialist.

For rapid and proper cooling, nightly temperatures should not be above 40 degrees Fahrenheit, Bratler said. After selecting a young healthy animal, the dressing should be carried out in a clean manner in sanitary surroundings, he advises.

For quicker chilling in order to get a better-keeping meat, the beef and pork carcasses should be split down the center of the backbone, Bratler said.

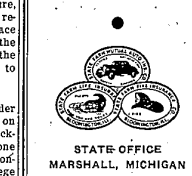
Within a 24-hour period after slaughtering pork fat should be rendered into lard, and three pounds of hydrogenated vegetable shortening should be added to each 50 pounds of lard. This will keep the lard sweet for a longer time.

The best known method for keeping lard is to store it in tightly closed containers in a dark room, the meat specialist advises.

Aluminum foil or moisture-proof papers and films will prevent freezer burn and flavor changes of meat during frozen storage. The freezer cabinet or locker should be maintained at zero degrees or lower, he said.

There are more than 100 different kinds of bituminous coal.

### STATE FARM INSURANCE



STATE OFFICE  
MARSHALL, MICHIGAN

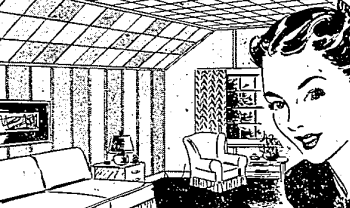
Local Agent  
**Maurice J. Brown**  
33636 Grand River  
or U. S. 16

### CARTER and MIDDLEWOOD Construction Company

- SCREENED PORCHES
- RECREATION ROOMS
- ALTERATIONS

Have Those Windows Caulked NOW!  
PHONES  
Farmington 0414 • Garfield 9094-W

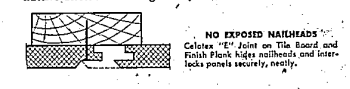
Now our attic is a delightful "extra" room...



### Costs little!

Approximate price for **CELOTEX** Tile Board and Finish Plank for Ceiling and Walls of 10' x 12' Room **Only \$43.89**

Your attic, too, can quickly become attractive "lived-in" space. As fast as these pre-finished board products go on, the job will be completed! Though near the roof, occupants will always be comfortable, for at one moderate cost—these modern finishes insulate, as they build and decorate. Your new attic room will be cooler in summer, warmer in winter... with worthwhile fuel savings! Celotex Insulating Interior Finishes make remodeling easy anywhere in your home. Come in! Let us show you a variety of distinctive Celotex room designs today!



NO EXPOSED NAILHEADS  
Celotex "E" Joint on Tile Board and Finish Plank keeps nailheads and sister locks panels securely, neatly.

### FARMINGTON LUMBER & COAL CO.

32800 Grand River Phone 0020

### It's New...

THIS SIMPLE, EASY WAY TO

### PREVENT RUST IN WATER

**R-S Clearstream**

IS GUARANTEED TO:

- Eliminate iron rust in water.
- Stop clogging and destruction of plumbing caused by scale and corrosion.
- Prevent all rust stains.

### Free WATER ANALYSIS

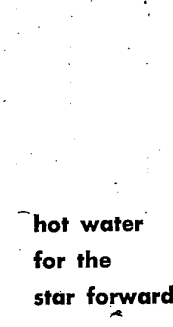
Mail coupon. We will send you FREE a bottle, handy mailing container, and illustrated folder telling how to end rust in your water system. Send in a sample of your water and we will send you a complete water analysis FREE!

**Reynolds-Shaffer Co.**  
12100 Cloverdale Ave.  
Detroit 4, Michigan  
Distributors of R-S WATER CONDITIONING EQUIPMENT  
Mail me FREE handy bottle and mailing container for FREE complete analysis of water. Also send FREE folder.

Name \_\_\_\_\_  
Address \_\_\_\_\_  
City \_\_\_\_\_ State \_\_\_\_\_

hot water for the star forward?

Easy...if your heater's Electric!



For hot water on tap... For clean, quiet, carefree service... For automatic completely dependable water heating... Be modern... Go Electric!

**YOU GET ALL THIS WITH AN ELECTRIC WATER HEATER!**

- Silent, carefree operation
- Lasts longer than other heaters
- No flames—no fumes—no fires
- Special low water heater rate
- Installed without charge
- Automatic thermostatic control

See your DEALER or your Edison office

Time in EDISON ELECTRIC THEATRE 7 p.m., Monday, WXYZ-TV



### Grow Out Vigorous Pullets On 1/2 the Mash



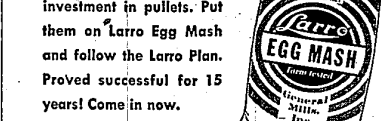
Want to save time and money—yet house uniform, big-framed pullets?

Then change your pullets to hopper-fed Larro Egg Mash and grains after 12 weeks. They'll eat no more mash per week than they did at 4 weeks of age.

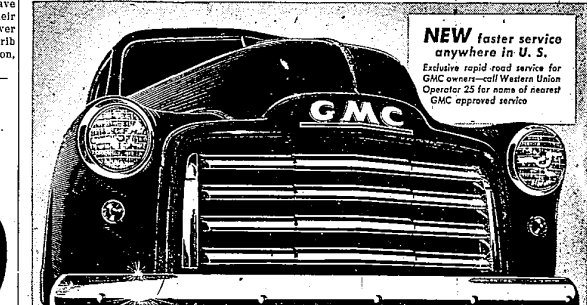
As they eat more and more low cost grains, they eat less and less mash.

High quality Larro Egg Mash contains all the nutrients needed to balance the grains. It prepares the birds for heavy, sustained production!

Don't take chances with your investment in pullets. Put them on Larro Egg Mash and follow the Larro Plan. Proved successful for 15 years! Come in now.



MILLERS OF FLOUR AND FEED FOR OVER 50 YEARS  
**FARMINGTON MILLS**  
ESTABLISHED 1895  
33408 STATE ST. *Delight* L.F. GILDEMEISTER, OWNER  
FARMINGTON PHONE 0016



**SURE SIGN of a SMART TRUCKER!**

WHEN you see this gleaming GMC emblem on a rugged new truck, you know its owner is sitting pretty for years to come. For GMC's have a time-established reputation for long service with low maintenance cost—and with minimum down time for repairs.

That's because every GMC is a real truck—truck-built by the world's largest exclusive manufacturers of commercial vehicles. Every unit of every GMC, from grille to tail gate, is engineered for trucking service!

To find quick proof of this, just compare a GMC with any other truck before you buy. Compare engine, frame, transmission; compare cab, axles, and springs—see how much extra value you get.

Or count how many new GMC's you see on the road—far more today than ever before. Then see your GMC dealer and let him give you the inside story that explains why so many cost-wise operators are switching to GMC's because experience proves them best in the long haul!



**Get a real truck!**  
Phone Farm. 0950 **EARL VIVIER** 33205-Grand River Ave.

You'll do better on a used truck with your GMC dealer