

Season's
best
Wishes
to
You

Nearly half of all the eggs produced in the world are laid by hens in the United States. For the last 6 years, the average American has been eating eggs at the rate of more than one a day.

STATE FARM INSURANCE

All types of automobile insurance, including the famous 80-20 collision pioneered by State Farm Mutual. All at low cost because State Farm aims to insure only careful, selected drivers—who have fewer accidents!

Also Residential Liability, Life and Fire Insurance

Hear

CECIL BROWN

AROUND THE WORLD

Brought to you by

STATE FARM MUTUAL

AUTOMOBILE INSURANCE

COMPANY

Saturday

7:55 p.m.

M. J. Brown

LOCAL AGENT

33636 Grand River

Phone Farmington 0757



It's a wonderful family
holiday—one
we hope
you all
will enjoy
to the utmost



**Farmington
Lumber & Coal
Co.**

32800 Grand River
Phone 0020

FARM NEWS

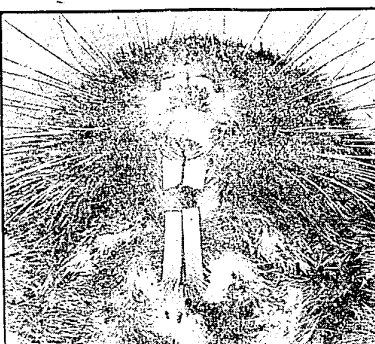
Parasites Labeled Barney Bandits

"Barney bandits, such as internal parasites and protozoan diseases, can be whittled off hog-raisers will follow good sanitation practices," Dr. Frank Thorp, Jr., said this week.

He pointed out that good sanitation practices take little extra time and expense, yet pay off in bigger financial returns to the swine producer through more economical gains and feed saved.

"Cleaning the farrowing pen thoroughly with a hot water and lye wash before the brood sow is brought in is one of the first steps in preventing worm-infestation and disease," Thorp said. If the pen is used more than once it should be cleaned before each use.

Another possible source of infection is from the sow. So it's a good idea to wash her thoroughly and place her in the clean farrowing pen 3 days before she's due to farrow.



MEMBER OF THE UNDERGROUND—You may laugh at this pocket god's buck teeth, but he won't. His chisel-like incisors are just about the most important things he owns. He uses them for digging tunnels, cutting roots, stems and tubers. The little rodent's teeth grow a total of approximately 45 inches a year, or about six times his body length, according to a recent study made by the University of California's College of Agriculture. And how'd you like to spend a year looking into that face in order to measure those teeth? Huh—not even for science?

New Labor Saving Dairy Housing Unit Put In Use At Michigan State

A new dairy barn arrangement, designed as a research and demonstration unit, was put into use this week at Michigan State College. Savings in labor, herd health and ease of operation are among the advantages of the new structure.

A demonstration Thursday, December 6, inaugurated a dairy unit, selected the new facilities on behalf of the college on the demonstration day. J. E. Brown, Great Lakes Steel Corporation vice-president and general manager of its Quonset manufacturing division, pointed out that the project is typical of the manner in which manufacturers are assisting agricultural research to improve practical farming methods and to make these methods available to the farmer.

**THREE QUALITIES
USED IN SELECTING
NEW COWS FOR HERD**

Michigan dairymen use three methods of selecting cows and heifers to add to their herds. They are individual merit, pedigree evaluation and progeny performance. These big words are pretty practical when you look into what they really mean, according to N. P. Ralston, dairyman at Michigan State College.

Individual merit means to select a cow for her own record and type. "We need to set standards above which we would like our cows to be," Ralston says. "The cow we're considering for our herd should produce more than the breed average and more than our present herd average."

If cows are classified for type they should at least classify "good" or "good plus" or above. "And we must not overlook the disposition and handling qualities of the individual cow," he says.

Spud Production Increase Asked

With present stocks adding up to a mere sizeable eating crop and prices climbing, potato production for 1952 looks pretty good.

D. L. Clannahan, Michigan State College farm crops specialist, says that Michigan's 1951 potato acreage was the lowest since records have been kept. The United States acreage dipped to the lowest point since the 1870's. That's the reason the United States Department of Agriculture has asked for an increase in acreage for 1952. A boost of ten per cent for Michigan has been asked.

Number of acres planted to potatoes has been going down throughout the nation.

24-HOUR TOWING SERVICE

CALL US ANY TIME — DAY OR NIGHT

**EXPERT BUMPING
AND PAINTING**

DRIVE IN FOR A FREE ESTIMATE

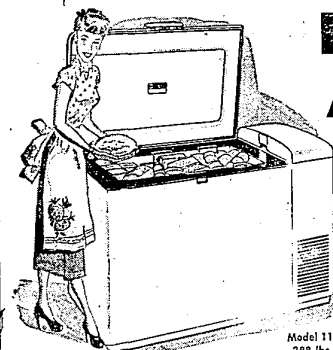
BERLING - McHUGH, Inc.

FORD SALES AND SERVICE

30711 Grand River — Farmington, Mich.
Phone 2690 - 1 - 2 SAT. 8 A.M. — NOON
OPEN 8 A.M. TO 7 P.M.

Christmas Special! INTERNATIONAL HARVESTER Freezers

**NOW IS THE TIME
TO BUY!**



Model 111—stores
388 lbs. of food

- 125 lbs. Meat with each 15.8 ft.
- 100 lbs. Meat with each 11 ft.
- 50 lbs. Meat with each 7 ft.

See This Beautiful Gift for Only **\$290.00**
7 FT. SIZE

EVERETT IMPLEMENT CO.

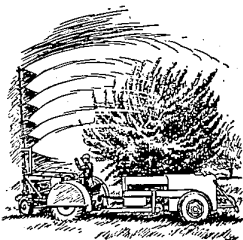
"Your International Harvester Dealer"

31200 Grand River at Orchard Lake Road
Phone 1515



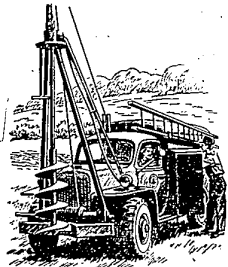
Concentrate spraying gaining favor with Michigan farmers

Using a stronger spray solution and applying correspondingly less of it per tree shows advantages in spraying fruit crops. According to the Michigan State College Agricultural Experiment Station, end results are as effective as when more of ordinary mixtures are used. Concentrate spraying reduces spray injury to fruit and foliage, cuts amount of spray chemicals lost by run-off, reduces the water needed and time required for refilling. On vegetable crops, concentrate spraying has been limited to control of insects when complete coverage is not required. For further information, call, write or visit your County Agricultural Agent.



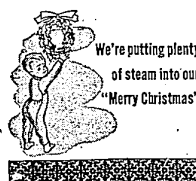
New telephone truck is "jack of all trades"

Michigan Bell has recently put into service a truck that can dig a hole in the ground, hoist and set a 35-foot telephone pole, pull up old wire, haul tools and materials and do a lot of other work, with a 2-man crew. A remarkable piece of mechanical engineering efficiency, this new truck is another example of the way we're working to speed telephone service to rural areas and at the same time keep costs down.



MICHIGAN BELL TELEPHONE COMPANY

**CHRISTMAS
GREETINGS**



FRED CURCIO

GULF REFINING CO.

31233 Grand River

Phone Farmington 2586



ELECTRIC, of Course

A fluffy wool electric blanket or comforter lulls you to sleep... keeps you warm as a kitten at the hearth, all night long. These warm friends automatically adjust to temperature changes in your room. There's nothing for you to do but enjoy a good night's sleep. You'll like the colors they come in, too... and they're easy to keep fresh and lovely looking.

You'll find electric blankets, comforters or sheets at your electric appliance dealer's now.

Time in EDISON ELECTRIC THEATRE Wednesdays at 7:00 P.M., WXYZ-TV

SEE YOUR DEALER or Detroit Edison

HERE'S WARMTH
WITHOUT WEIGHT

