

Safety Quiz:

Test Your Power Mower IQ

- Are you and your family ready for a safe mowing season?
1. The first step to take when you purchase a new mower is to start it up to see if it works. True () False ()
 2. Children and pets should be kept at least 10 to 15 feet away from an operating power mower. True () False ()
 3. Children and pets should be kept at least 10 to 15 feet away from an operating power mower. True () False ()
 4. Never attempt to unclog your mower's discharge chute while the engine is running. True () False ()
 5. Since a riding mower keeps the operator's feet from touching the ground, it is not necessary to clear the area of debris. True () False ()
 6. It is a good idea to push your mower half the time and pull it the other half. True () False ()
 7. Steep slopes should always be mowed sideways with a walk-behind mower. True () False ()
 8. When using a riding mower, you should always mow steep slopes up and down. True () False ()

ANSWERS

1. False. Before starting the engine, be sure to acquaint yourself thoroughly with your mower by reading the owner's manual.
2. False. Never add fuel to a hot engine. Remember that gasoline can be a hazard — especially around high temperatures.
3. False. Keep children and pets completely out of the area. Debris, such as a stone, could be hurled several feet through the mower's discharge chute.
4. True. Hands and feet should be kept completely clear of the discharge area. If the mower clogs, it should be turned off and the blade completely stopped — then a long stick may be used.
5. False. Always make sure lawn is clear of debris regardless of the type of power mower used. Sticks, stones, wire and other objects could be dangerously thrown by the blade.
6. False. Never cut grass by pulling the mower toward you.
7. True. Hills and slopes should always be cut sideways with a walk-behind mower to avoid dangerous falls.
8. True. Mow steep slopes up and down for greater stability with your riding equipment.

Unused Space? Try A Mini-Garden

You can grow a lot in a little — a lot of fresh, succulent vegetables in a little space. And every back yard has unused little spaces.

For instance, right outside the kitchen door there's usually room on either side for radishes or parsley, neither of which will grow large and both of which adapt to growing in small groups rather than in straight rows.

Along the sunny wall of your garage (or your house) there may be room for half a dozen tomato plants.

Train them up against the wall on heavy cord or on a trellis.

What could look more appetizing as well as beautiful against a wall than ripe, red tomatoes?

building wall, plant peppers in the area. Or set plants on either side of a central path in front or back of the house. Peppers are ornamental as well as productive of food.

An unadorned fence cries out for a drapery of vines. Cucumbers are vines and so are tomatoes. Train them to support as they grow and attach them carefully.

Not only will each fruit be on view, but they will be high off the ground and thus keep clean and are easy to pick.

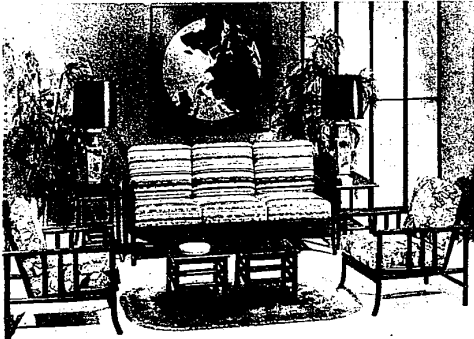
Every little space has its use. A square yard is enough for a plant of bush squash, a wall or fence can support vining beans, and the flower border might sport an edging of lettuce.

Survey your own garden, find the little spaces and plan to fill them with something with the usual too-narrow space between it and the delicious to eat!

Mister TILE

| | | | |
|--------------------------------|---------|-----------------------------------|---------|
| NYLON SHAG ON RUBBER 1/2" BOLL | \$3.99 | VINYL PRINTED KITCHEN CARPET | \$6.99 |
| SHOWER DOOR 4'x6' RIS 5 TUB | \$17.00 | COTTAGE TILE VINYL ASBESTOS BOX | \$4.99 |
| CERAMIC TILE FROM 39¢ | SO. FT. | PEEL & STICK OZITE VINYL ASBESTOS | 36¢ 25¢ |

9300 TELEGRAPH
LONG 3-3225
Hours: 9:30-7:00 Monday-12:30



RATTAN FURNITURE GROUPING -- The pieces consist of a sofa, two end tables, two lounge chairs, and two bunting tables. They are finished in a tudor brown wood stain. Bunching tables and end tables have wood grain plastic laminate tops.

GENUINE ARMSTRONG TEMLOCK WASHABLE SUSPENDED CEILING

Complete! Includes HEAVY DUTY GRID SYSTEM

GET ALL THIS at our low price. Washable white cell no panels, grid system main runners and tees, suspension hooks and hanger wire. Acoustical and patterned panels also available.

17¢ WITH NEW WALNUT Grid System only **21¢** sq. ft.

PANELING Pre-Finished Lean Paneling 4"x8" GROOVED PANEL 2.95 4"x7" 2.49

WE SPECIALIZE IN TRUST PRICED PANELING. SEE OUR BIG SIGN!

1" RICHLY FINISHED HARDWOOD PANELING

HIGHLAND BIRCH 4'x7' \$4.48 4'x8' \$5.12

GUTTERS WHITE ALUMINUM 10 FT. LENGTHS NOW **\$2.19** LOW FITTINGS AVAILABLE

FOR YEAR 'ROUND HOME COMFORT OWENS CORNING FIBERGLAS INSULATION \$4.87 70 Sq. Ft. ALUMINUM 1 side Keeps heat inside in Winter, outside in Summer! Aluminum side provides moisture barrier, full 3/4" inch thickness. Ideal for walls or ceilings.

FOR KITCHEN OR BATH! NEW 4'x8' **MELAMINE** Tile-Finish HARDBOARD Panels **\$7.89** each

MOLDED 1-PIECE TOP & SINK **VANITY** 2 Doors! Compare at \$59.95 **\$39.95**

ALLEN LUMBER CO.
21845 GRAND RIVER—between McNichols & LeBarre
KE 2-0905
INKSTER—23540 Michigan LO 3-1600 Open Sun. 10-5

Scotch Pine Still Favorite

Michigan people bought more Scotch pine Christmas trees last year than all other species combined, according to Les Bell, Michigan State University forester.

"During 1971 Scotch pine was again our best seller," says Bell, "but its percentage of total sales dropped from the 90 percent of a year ago to 85 percent this season."

The estimated 1971 Michigan Christmas tree harvest was 5 1/2 million trees, according to Bell. This is up a quarter of a million from 1970.

producers shipped more trees this year than last."

Several large producers reported having to cut more trees than they planned to fill last minute requests. Most

SMART "HOME CARE SAVINGS START" AT REDFORD

| | | | |
|---|--|--|---|
| X-KE 13 PRE-FINISHED PANELS 4'x7' G.P. 4'x8' GP TROPICANA 2.99 3.19 | REDWOOD REDDI-DECKS 2x2 3x3 4x4 14.29 7.99 14.99 | REDWOOD FENCE SECTIONS 4x8 5x8 6x8 12.99 14.99 16.65 | PATIO PANELS 26"x96" 2.49 26"x120" 3.49 26"x144" 3.99 FIRST GRADE 5 oz. |
|---|--|--|---|

INSTALL YOUR OWN Andersen Flex-Pac

Screens, Storms, Grilles Optional

Completely Factory Assembled

- Out of the carton—into the wall!
- Factory finished. Two coats of paint!
- Easily installed in any weather!
- Use as casement or awning!
- Ideal for the budget minded!

20% OFF STOCK SIZES

REDWOOD DIMENSION AND BOARDS

| Clear Heart | 6" | 8" | 10" | 12" | 14" |
|-------------|------|------|------|------|------|
| 2x6 | 3.39 | 4.97 | 6.22 | 7.48 | 8.70 |
| 1x4 | .93 | 1.38 | 1.70 | 2.05 | 2.39 |
| 1x6 | 1.49 | 2.18 | 2.72 | 3.27 | 3.81 |
| 1x12 | 3.06 | 4.49 | 5.61 | 6.73 | 7.85 |
| 2x4 | 2.28 | 3.31 | 4.14 | 4.97 | 5.80 |

CONSTRUCTION HEARTY FOR FENCE AND PATIO

| 1x4 | 60 | 88 | 110 | 132 | 154 |
|-----|------|------|------|------|------|
| 1x8 | .90 | 1.32 | 1.65 | 1.98 | 2.31 |
| 2x4 | 1.18 | 1.73 | 2.16 | 2.66 | 3.03 |
| 2x6 | 1.77 | 2.60 | 3.25 | 3.89 | 4.54 |
| 4x4 | 2.52 | 3.70 | 4.62 | 5.56 | 6.47 |

4" x 6" FOR PATIO, LAWN AND GARDEN 52¢ LIN. FT.

KITCHEN CABINETS

HAAS RAYGOLD CONNERS

SAVE UP TO **40%**

Armstrong CEILING TILE

1/2" 12x12 TILE

Economy perforated 13¢ sq. ft.

CHAPERONE 1.19 ea.

PINEHURST 24¢ sq. ft.

2x4 LAY-IN PANELS

NORTHGATE 1.59 ea.

PINEHURST OR TEXTURED 1.79 ea.

MULE HIDE ROOFING

- 240 lb. Shingles
- Self-sealing
- Today's Most Popular Colors

349 Per Bundle
33 1/2 sq. ft.

ALUMINUM SIDING

WITHOUT BACKER WITH BACKER

\$24.95 sq. ft. **\$28.95** sq. ft.

100 sq. ft. 100 sq. ft.

Save On **QUALITY DIMENSION LUMBER**

| | 2x4 | 2x6 | 2x8 | 2x10 | 2x12 | 4x4 |
|-----|------|------|------|------|------|------|
| 6' | .67 | 1.06 | — | — | — | — |
| 7' | .82 | — | — | — | — | — |
| 8' | .97 | 1.38 | 1.95 | 2.37 | 3.30 | 2.34 |
| 10' | 1.26 | 1.87 | 2.43 | 3.17 | 4.26 | 2.92 |
| 12' | 1.54 | 2.21 | 3.54 | 4.32 | 5.30 | 3.50 |
| 14' | 1.80 | 2.60 | 3.96 | 5.11 | 5.94 | 4.09 |
| 16' | 2.17 | 3.39 | 4.37 | 5.81 | 6.91 | 4.78 |

18' - 20' - 22' Lgths. also available

SAVE! Quality Red WROUGHT IRON

4" Section **\$4.69**

Other Sizes Available

ALSO 5" SECTION **\$5.89** 6" SECTION **\$6.99**

SHEET PRODUCTS

| SIZE | PLYWOOD | PARTICLE BOARD | DRY WALL |
|------|---------------------------|----------------|----------|
| 4x8 | INT. EXT. SHGT. PC. 25 UP | 4x7 3/8" 1.59 | 4x8 1.69 |
| 1/4" | 4.39 4.79 | 4x10 2.79 | |
| 3/8" | 5.89 6.29 4.29 3.19 3.09 | 4x7 1/2" 1.89 | |
| 1/2" | 7.39 7.59 5.29 3.29 3.19 | 4x8 1.99 | |
| 5/8" | 8.69 9.39 6.49 3.69 3.49 | 4x10 2.99 | |
| 3/4" | 9.59 10.45 7.69 5.59 5.49 | | |

TORO

LAWN SPRINKLERS

CUSTOM DESIGNING

FULLY Automatic TORO SYSTEMS

YOUR KEY TO A BEAUTIFUL CARE-FREE LAWN...

- RESIDENTIAL
- COMMERCIAL • INDUSTRIAL

FREE ESTIMATES
SALES - INSTALLATION - REPAIRS

CONVERT YOUR PRESENT SYSTEM TO FULLY AUTOMATIC

TORO

C.E. Anderson Co.

26500 HARDING OAK PARK
(1 Block E. of Greenfield-1 Block S. of Eleven Mile)

399-9600

Plans and Materials Available for the Do-It-Yourself

PATIO DOOR #5000 with SCREEN 6'x6'8" IN WHITE REG. 156.95

ONLY **124.95**

TEMP. INSULATING GLASS

Forest Glade BARK

MEDIUM CHIP • 3 CU. FT. BAG

• FLOWER BEDS • PATHWAYS • PATIOS AND PLAY AREAS

\$2.99 - 3 FOR \$8.99
BAG 6 FOR \$14.99

77¢ ea

REDFORD CASHWAY LUMBER

CASH OR CARD

2"x4" 8' UTILITY STUDS **77¢** ea

Insulation Foil-One-Side 3 1/2"x15" 70 Sq. Ft. Roll **4.99**

6" BATTS 15"x48" 50 sq. ft. Bag **6.39**

ROYAL OAK 548-2153 LIVONIA 281-8110 WARREN 776-7000
11500 FARMINGTON ROAD 24800 MCNICHOLES RD. JUNE SOUTH OF 10 MILE RD.
Corner of Streich Between Schaeffer & Plymouth
8 to 9:30 DAILY - 7:30 THURS. & FRI. 8 to 9:30 DAILY - 8:30 THURS. & FRI. 8 to 9:30 DAILY - 7:30 THURS. & FRI.