

HOME IMPROVEMENT SPECIALS LATEX PAINT SPECIALS



INTERIOR & EXTERIOR
SUPREME LATEX PAINT

HOUSE PAINT - For wood and masonry. Protects and wears like quality oil-based. Lets moisture escape without blistering; usually covers in one coat. Resists mildew, stains, etc. White or Jamestown colors. FLAT INTERIOR - Full-bodied, non-drip latex covers most surfaces in one coat. . . . dries in 30 min. Leaves a flat, scrubbable, fade-resistant finish.



KORDITE 50 PAK **199**

PLASTIC TRASH CAN LINERS
20-gal. cap. Strong, leakproof!
With twist ties. One-at-a-time
dispensing. E3-6071



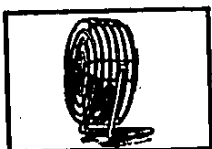
B-D **1288**

ELECTRIC GRASS TRIMMER
Trims along walls, paving. Full
circle guard for 3 1/2" blades.
Instant trigger switch. 6200



TRUE-TEST **99c** GAL.

STOVE & LANTERN FUEL
For gasoline stoves, lanterns &
catalytic heaters. Inhibits resin
formation; won't corrode.



PATTON
HIGH
VELOCITY AIR
CIRCULATOR
3-Speed, 14 in. U2-1465 **\$39.95**

Visit Our Complete
**CANNING
DEPARTMENT**

Everything you need:

- Rotary Food Presses
- Canners
- Pressure Cookers
- Blanchers
- Jars & Lids (all sizes)
- Rubber Seals
- Wax
- Jelly Glasses
- Rings



ORTHO
SAVE
50%

Now
only **\$2.49** gal.

- ORTHO-GRO Liquid
Plant Food
- ORTHO Rose &
Flower Food
- ORTHO Evergreen &
Azalea Food

5 MILE ROAD
at FARMINGTON ROAD

True Value
HARDWARE

DINERS
CLUB

Master Charge

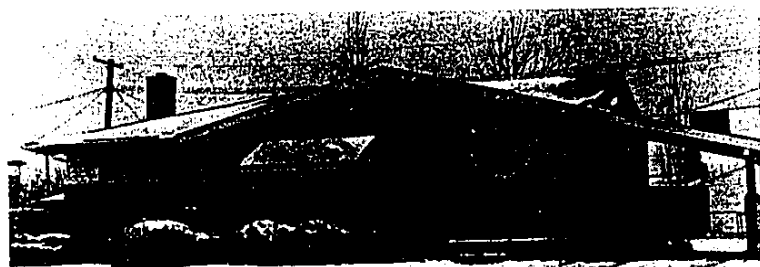
PHONE
GA 2-1155 — 937-1611

OPEN
DAILY 9 a.m. - 9 p.m.

SUNDAY 10 a.m. - 2 p.m.

BANKAMERICARD

**LIVONIA
HARDWARE**



BEFORE AND AFTER pictures show what one young couple in Livonia have accomplished in a scant four years. Lorraine and Robert Haas bought this house in 1968. It was built in 1956. The carport on the left was replaced by a comfortable family room. The stone facing on the outside and all the renovation inside the house were done by Bob Haas, who is a designer for Ford Motor Co. Only the brickwork required a professional.



SUMMER SALE

CASH & CARRY
SAT. SUN. MON.

*Canyon Stone
Slate Finished*
**PATIO
STONES**



16"x16" **96c**
REG. \$1.20

\$1.97 24"x24"
REG. \$2.60

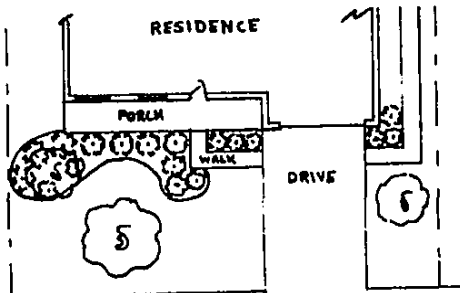


DO-IT-YOURSELF
LANDSCAPE
SUPPLY & GARDEN CENTER
27700 W. 7 MILE RD.
535-8282

WAYNE JONES SAYS: Don't wait to do your landscaping because you don't know how! We will draw a plan for your home, and give you our expert advice on what to plant and how to plant it. We draw free plans to scale for our customers. Just bring in your house and lot dimensions and a picture, if possible. Your title survey usually has all this information on it. We can do the planting for you, for an additional labor charge.



THIS IS A
56 FT. HOUSE
ON A 76 FT. LOT.
WITH THE
FOLLOWING
PLANTING
MATERIALS:



4 Armstrong Junipers	35.80	1 Cutoneaster Horizontalis	3.95
3 Spreading Yews	28.85	2 Brown's Yews	17.90
1 Flowering Crab	9.95	1 Potentilla	2.95
2 Golden Vicary	9.90	1 Thundercloud Plum	6.95
2 Compact Pifters	13.90	1 Silver Maple	8.95
1 Cistena Plum	4.95		153.96
2 Dwarf Yews	17.90		TAX 8.18
			TOTAL \$160.07

WE HAVE BEAUTIFUL EVERGREENS & FLOWERING SHRUBS TO
SUIT YOUR NEED & BUDGET



38903 ANN ARBOR ROAD, LIVONIA
(West of Ann Arbor Trail)

"THE NURSERY SUPERMARKET"

With the Personal Touch

Call **464-1500**

HOURS: Daily 9 a.m.-6 p.m. Sunday 10 a.m.-6 p.m.

HOME
IMPROVEMENT
Begins With a
garage...



CUSTOM-BUILT

FOR YOUR
HOME

All Styles & Models

- MASONRY
- ALUMINUM
- FRAME



LICENSED • BONDED
QUALITY GUARANTEED

HYGRADE
GARAGE

and
CONSTRUCTION

Owner Is Your Salesman
CALL ANYTIME

557-2880